

Organ plays at 9, 11 and 4:50
(Melody and Chimes at Noon)

WANAMAKER'S

Store Opens at 9
Daylight-Saving Time

WANAMAKER'S

Store Closes at 5
Daylight-Saving Time

WANAMAKER'S

WEATHER
Showers

A White Sale, Fashions, Things for the Home, a Whole Store Full of Opportunity at Wanamaker's, and Every Bit New

Conceit May Puff a Man Up for Occasions

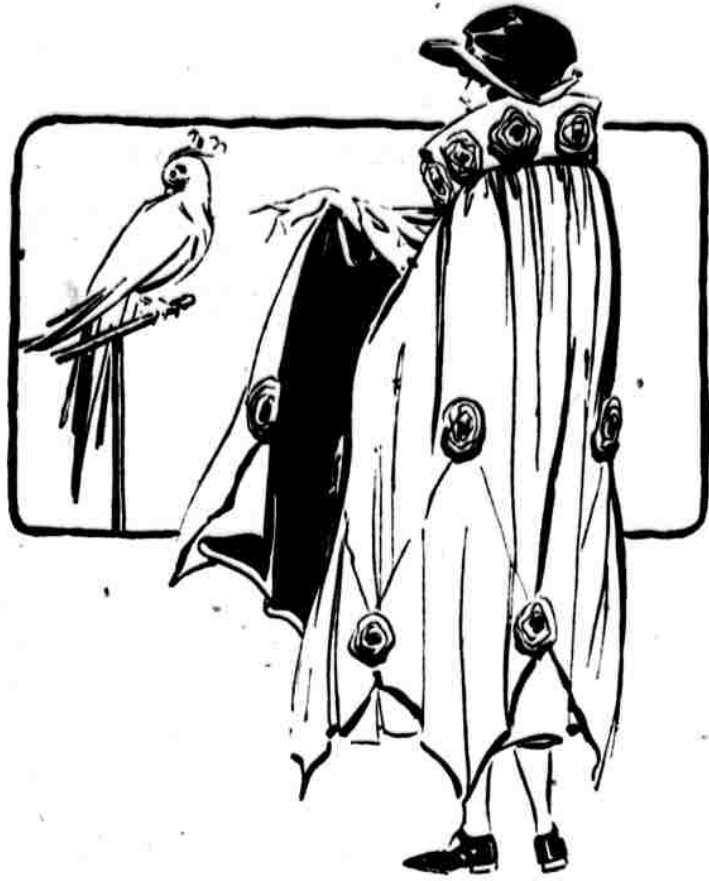
but it never holds him up long, and it sometimes falls him suddenly and leaves him in awkward situations. There is no prop that can be bought or obtained through favor or wealth that can be depended upon as a certainty.

One can never get far by pretense or unfairness.

Only the genuine article will win the day.

[Signed] *John Wanamaker*

May 17, 1922.



Young Women's Long Capes of Soft, Rippling Black Silk

Are \$38.50 to \$110

A WONDERFULLY lovely collection, presenting more diversity and more originality than might be thought possible in just black silk.

There is rich Canton crepe, twisted silk faille, and the more transparent crepe romaine, which is particularly effective in an unlined model.

For young women the gayer linings are favored—vivid French blue, periwinkle, American Beauty rose. Others are beige or gray or even black within.

Some have the fullness gathered to a yoke. Others are tucked or pleated or hand embroidered or strewn with flower-like ornaments of self-materials.

Collars are of blue fox fur, squirrel, black or natural caracul, or some elaboration of the silk itself.

Beyond question, the most attractive capes procurable at \$38.50, \$48, \$58, \$65, \$78 and on up to \$110.

(Second Floor)

NEWCOMERS to the White Sale

are dotted crepe de chine undergarments in matching sets or separately. They are flesh-color, the dots hand embroidered.

The nightgown has the new deep-pointed hem and narrow tie sash, V neck and sleeveless. It is \$9.75; the step-in bloomer, \$5, and the matching vest, \$5.

New step-in bloomers of white or flesh tub silk, ruffle-edged, are \$1.85.

Delightful choosing in silk undergarments in many new fashions at these prices:

Chemises, \$1.85 to \$10.50.
Nightgowns, \$3.85 to \$20.
Bloomers, \$2.75 to \$9.
Step-ins, \$1.85 to \$3.
Camisoles, \$1.50 to \$2.50.

Domestic and Philippine garments still offer fine choosing at tempting prices.

CHILDREN'S Smocked Dresses in the White Sale

The prettiest little dresses of white dotted swiss, barred muslin, voile and batiste with just a touch of color in the pink or blue smocking.

A number have collars to match the color of the smocking, but the rest are collarless. They are for girls from two to six years and have such little prices as \$3.75 to \$6.75.

(Third Floor)

KERMANSHAH Rugs From Persia

Glorious rosy tints, soft and exquisite, also delicately glowing blues and lovely blues—think of the interplay of such colors in all-over figures, chiefly floral, with the tree of life outspreading in some of them and all combining to make up patterns of impressive charm.

People long have been wishing for just such pieces and here they are, rich and wonderful.

For pieces so fine and so scarce the prices are really moderate.

Notable choice of small and medium-sized weaves at \$18 to \$35 in size 2x3.2 ft. and at \$135 to \$200 in size 6.4x4.7 ft. up to 8x5.2 ft.

Large sizes at \$575 for 13.4x10 ft. to \$1035 for 15.5x11.2 ft.

(Seventh Floor)

A TRUE Man Wants a Flannel Suit Like Those From England

In the London Shop

Sack suits of good English flannel in two shades of gray or blue with white pin stripes.

Perfectly and distinctively tailored. Finest suits imaginable for a man to wear in Summer. Prices are \$60.50 and \$62.50.

Real English cricket trousers of flannels, the finest since the war, also are here. All-white ones are priced \$25, with the blue or black pin stripe \$18.

(The Gallery)



A Good, Solid Shoe for a Shrewd, Practical Man at \$7.50

And there are six styles, all up-to-the-Spring, to choose from at the one price.

Newest of all is an English oxford in the blucher type. Tan, of course, being made of smooth calfskin, and it is freely perforated. One of the smartest shoes in many a season at the price.

Brogues are ever fashionable, and trim brogues are a dark tan calf, freely perforated. The same shoe also in black calf.

Other men insist upon an English last, and a plain shoe at that. After all, it does make smart footwear, especially the tan Viking calf shoe, perfectly plain except several rows of orange stitching that contrast with the leather. The same shoe is here in black Viking calf.

For the man a little older than he is young, a plain broad-toe blucher oxford is the most sensible shoe. One of black kid is in this price group.

(Main Floor)

The Daintiest Frocks for Small Daughter of Six to Fourteen

Fine imported swisses and dimities, made with charming individuality.

Imagine a bouffant ruffled frock of sheer orange-color swiss, hand whipped in black with just a suggestion of blue.

Or one of emerald green swiss, the net sleeve puffs finished with real lace. Another captivating one is of clear apricot swiss and softest cream net.

(Second Floor)

TWEED Coats and Capes in Plenty at \$37.50

Women may have any one of four styles in tweed sports coats and one style in a tweed cape at \$37.50.

And tweed is the coating above all others to choose for traveling or motoring. It minds neither rain, dust nor strong sunshine.

The coats are in Raglan or strictly mannish cut with set-in sleeves. In plain colors or with an over-plaid. Some are belted. There are all the soft pastel shades in the group.

(First Floor)

JAPANESE Kimonos and Slip-Overs Reduced

Now \$2.85 to \$10, which is considerably below former prices. All are cotton crepe, embroidered by hand.

(West Aisle)

UMBRELLAS for Women in Mourning

All-black from top to tip, and dull black handles if desired. With excellent cotton covers, \$2.50. Silk-and-cotton, \$4, \$5 and \$6. All-silk, \$5 to \$12.

(Main Floor)

DRESS Linens of Every Variety Are Ready

Belgian ramic linens of sturdy quality for serviceable suits are 85c a yard. Irish ramic weaves of lighter weight and glossier finish, \$1 a yard. The smooth and non-crushable "French" weaves are \$1.25 a yard.

(First Floor)

All the above are a yard wide, and in white and colors. Sheer handkerchief linen in white is \$1.25 a yard, and colors \$1.50. Natural-color linen crash in yard-width for 75c and \$1. A heavy quality for riding suits and hard service, 54 inches wide, is \$2 a yard.

FOUR-PIECE Willow Suits in Cretonne Believed Unequaled at the Price—\$138

Settee is 68 inches long with seat 22 inches deep. Cushion back. Chair and rocker large and roomy and comfortable. All pieces in cretonne upholstery.

Round table has glass top 28 inches in diameter over cretonne, the only practical and satisfactory top for a willow table. Shelf underneath.

(Sixth Floor)



For Fun Afloat—Canoes, Rowboats, Rowboat Motors

Lovers of aquatic pastimes will find much to interest them in the craft shown in the sporting goods store, which includes the best types of small boats and small boat supplies.

Kenneth canoes, five different models, all sizes and many colors, \$65 to \$75.

Yacht tenders, big little boats, easy to row, safe, roomy, seaworthy; 9 ft., \$80; 10 ft., \$90.

Outboard rowboats, made so a motor can be attached to stern; 13 ft., \$12; 14 ft., \$65; 16 ft., \$95.

Flat-bottom fishing dories, 10 ft., \$42; 12 ft., \$52.

Callie outboard motors, complete, ready to attach to boat, \$75 to \$130. Evinrude outboard motors, complete, \$100.

Canoes, paddles, oars, back rests, cushions, boat lamps, anchors and all other accessories for a boat.

(The Gallery)

THAT Pirate Fly Is Around Again—but He Can't Break Through Window Screens

And screens for the whole house are here, screens that keep the flies out, but let summertime inside.

Not only for the whole house, but for any house, for there are screens of all types, all sizes.

Every one new and dependably made and every one moderately priced.

Screen doors, too, are in great variety, with prices ranging from \$2.25 to \$5.40, according to the size and quality. The sizes that are ready to hang are: 2 ft. 6 in. x 6 ft. 6 in., 2 ft. 8 in. x 6 ft. 8 in., 2 ft. 10 in. x 6 ft. 10 in., 3 ft. x 7 ft.

Screens are as follows:

High	Wide	Price	High	Wide	Price	High	Wide	Price
18 in.	32 in.	\$1.00	24 in.	32 in.	\$1.20	28 in.	40 in.	\$1.40
20 in.	32 in.	\$1.05	26 in.	32 in.	\$1.25	28 in.	44 in.	\$1.50
22 in.	32 in.	\$1.10	28 in.	32 in.	\$1.30	30 in.	44 in.	\$1.55
24 in.	32 in.	\$1.15	30 in.	32 in.	\$1.35	32 in.	44 in.	\$1.60
26 in.	32 in.	\$1.20	32 in.	32 in.	\$1.40	34 in.	44 in.	\$1.65
28 in.	32 in.	\$1.25	34 in.	32 in.	\$1.45	36 in.	44 in.	\$1.70
30 in.	32 in.	\$1.30	36 in.	32 in.	\$1.50	38 in.	44 in.	\$1.75
32 in.	32 in.	\$1.35	38 in.	32 in.	\$1.55	40 in.	44 in.	\$1.80
34 in.	32 in.	\$1.40	40 in.	32 in.	\$1.60	42 in.	44 in.	\$1.85
36 in.	32 in.	\$1.45	42 in.	32 in.	\$1.65	44 in.	44 in.	\$1.90
38 in.	32 in.	\$1.50	44 in.	32 in.	\$1.70	46 in.	44 in.	\$1.95
40 in.	32 in.	\$1.55	46 in.	32 in.	\$1.75	48 in.	44 in.	\$2.00
42 in.	32 in.	\$1.60	48 in.	32 in.	\$1.80	50 in.	44 in.	\$2.05
44 in.	32 in.	\$1.65	50 in.	32 in.	\$1.85	52 in.	44 in.	\$2.10
46 in.	32 in.	\$1.70	52 in.	32 in.	\$1.90	54 in.	44 in.	\$2.15
48 in.	32 in.	\$1.75	54 in.	32 in.	\$1.95	56 in.	44 in.	\$2.20
50 in.	32 in.	\$1.80	56 in.	32 in.	\$2.00	58 in.	44 in.	\$2.25
52 in.	32 in.	\$1.85	58 in.	32 in.	\$2.05	60 in.	44 in.	\$2.30
54 in.	32 in.	\$1.90	60 in.	32 in.	\$2.10	62 in.	44 in.	\$2.35
56 in.	32 in.	\$1.95	62 in.	32 in.	\$2.15	64 in.	44 in.	\$2.40
58 in.	32 in.	\$2.00	64 in.	32 in.	\$2.20	66 in.	44 in.	\$2.45
60 in.	32 in.	\$2.05	66 in.	32 in.	\$2.25	68 in.	44 in.	\$2.50
62 in.	32 in.	\$2.10	68 in.	32 in.	\$2.30	70 in.	44 in.	\$2.55
64 in.	32 in.	\$2.15	70 in.	32 in.	\$2.35	72 in.	44 in.	\$2.60
66 in.	32 in.	\$2.20	72 in.	32 in.	\$2.40	74 in.	44 in.	\$2.65
68 in.	32 in.	\$2.25	74 in.	32 in.	\$2.45	76 in.	44 in.	\$2.70
70 in.	32 in.	\$2.30	76 in.	32 in.	\$2.50	78 in.	44 in.	\$2.75
72 in.	32 in.	\$2.35	78 in.	32 in.	\$2.55	80 in.	44 in.	\$2.80
74 in.	32 in.	\$2.40	80 in.	32 in.	\$2.60	82 in.	44 in.	\$2.85
76 in.	32 in.	\$2.45	82 in.	32 in.	\$2.65	84 in.	44 in.	\$2.90
78 in.	32 in.	\$2.50	84 in.	32 in.	\$2.70	86 in.	44 in.	\$2.95
80 in.	32 in.	\$2.55	86 in.	32 in.	\$2.75	88 in.	44 in.	\$3.00
82 in.	32 in.	\$2.60	88 in.	32 in.	\$2.80	90 in.	44 in.	\$3.05
84 in.	32 in.	\$2.65	90 in.	32 in.	\$2.85	92 in.	44 in.	\$3.10
86 in.	32 in.	\$2.70	92 in.	32 in.	\$2.90	94 in.	44 in.	\$3.15
88 in.	32 in.	\$2.75	94 in.	32 in.	\$2.95	96 in.	44 in.	\$3.20
90 in.	32 in.	\$2.80	96 in.	32 in.	\$3.00	98 in.	44 in.	\$3.25
92 in.	32 in.	\$2.85	98 in.	32 in.	\$3.05	100 in.	44 in.	\$3.30
94 in.	32 in.	\$2.90	100 in.	32 in.	\$3.10	102 in.	44 in.	\$3.35
96 in.	32 in.	\$2.95	102 in.	32 in.	\$3.15	104 in.	44 in.	\$3.40
98 in.	32 in.	\$3.00	104 in.	32 in.	\$3.20	106 in.	44 in.	\$3.45
100 in.	32 in.	\$3.05	106 in.	32 in.	\$3.25	108 in.	44 in.	\$3.50
102 in.	32 in.	\$3.10	108 in.	32 in.	\$3.30	110 in.	44 in.	\$3.55
104 in.	32 in.	\$3.15	110 in.	32 in.	\$3.35	112 in.	44 in.	\$3.60
106 in.	32 in.	\$3.20	112 in.	32 in.	\$3.40	114 in.	44 in.	\$3.65
108 in.	32 in.	\$3.25	114 in.	32 in.	\$3.45	116 in.	44 in.	\$3.70
110 in.	32 in.	\$3.30	116 in.	32 in.	\$3.50	118 in.	44 in.	\$3.75
112 in.	32 in.	\$3.35	118 in.	32 in.	\$3.55	120 in.	44 in.	\$3.80
114 in.	32 in.	\$3.40	120 in.	32 in.	\$3.60	122 in.	44 in.	\$3.85
116 in.	32 in.	\$3.45	122 in.	32 in.	\$3.65	124 in.	44 in.	\$3.90
118 in.	32 in.	\$3.50	124 in.	32 in.	\$3.70	126 in.	44 in.	\$3.95
120 in.	32 in.	\$3.55	126 in.	32 in.	\$3.75	128 in.	44 in.	\$4.00
122 in.	32 in.	\$3.60	128 in.	32 in.	\$3.80	130 in.	44 in.	\$4.05
124 in.	32 in.	\$3.65	130 in.	32 in.	\$3.85	132 in.	44 in.	\$4.10
126 in.	32 in.	\$3.70	132 in.	32 in.	\$3.90	134 in.	44 in.	\$4.15
128 in.	32 in.	\$3.75	134 in.	32 in.	\$3.95	136 in.	44 in.	\$4.20
130 in.	32 in.	\$3.80	136 in.	32 in.	\$4.00	138 in.	44 in.	\$4.25
132 in.	32 in.	\$3.85	138 in.	32 in.	\$4.05	140 in.	44 in.	\$4.30
134 in.	32 in.	\$3.90	140 in.	32 in.	\$4.10	142 in.	44 in.	\$4.35
136 in.	32 in.	\$3.95	142 in.	32 in.	\$4.15	144 in.	44 in.	\$4.40
138 in.	32 in.	\$4.00	144 in.	32 in.	\$4.20	146 in.	44 in.	\$4.45
140 in.	32 in.	\$4.05	146 in.	32 in.	\$4.25	148 in.	44 in.	\$4.50
142 in.	32 in.	\$4.10	148 in.	32 in.	\$4.30	150 in.	44 in.	\$4.55
144 in.	32 in.	\$4.15	150 in.	32 in.	\$4.35	152 in.	44 in.	\$4.60
146 in.	32 in.	\$4.20	152 in.	32 in.	\$4.40	154 in.	44 in.	\$4.65
148 in.	32 in.	\$4.25	154 in.	32 in.	\$4.45	156 in.	44 in.	\$4.70
150 in.	32 in.	\$4.30	156 in.	32 in.	\$4.50	158 in.	44 in.	\$4.75
152 in.	32 in.	\$4.35	158 in.	32 in.	\$4.55	160 in.	44 in.	\$4.80
154 in.	32 in.	\$4.40	160 in.	32 in.	\$4.60	162 in.	44 in.	\$4.85
156 in.</								