

STATE REFORM HIT AS LACKING PUNCH

Research Bureau Says Proposed Reorganization Doesn't Go Far Enough

WOULD FIX RESPONSIBILITY

The tentative report of the Commission for the Reorganization of the State Government is good as far as it goes, but it doesn't go far enough, the Bureau of Municipal Research says today.

"Nothing is said about putting the State civil service on a merit basis; nor about abolishing the offices of Lieutenant Governor and Secretary of Internal Affairs," the report says.

"Nothing is said about fostering more co-ordination of administrative affairs by correlating and merging departments until they are reduced to a number that makes Cabinet meetings practicable."

The Research Bureau notes that details of the commission's State budget system have not been made public. The bureau hopes the system will include the following essential requirements:

"First, The Governor should prepare the budget. He should have all the 'big' jobs, including a new office, a State budget director; but he should have no chance for shifting the responsibility for what goes into the budget to any subordinate or any one else."

"Second, Proposals to spend money should be accompanied by proposals to raise it.

"Third, 'State aid' to welfare agencies should be granted, not pork-barrel fashion, but in accordance with a unit form plan, enacted into law, whereby each institution of any particular class shall be paid in proportion to the public service it renders.

"Fourth, Appropriation bills should be acted upon early in the session instead of being held to the end and used meanwhile as a whip to keep members of the Legislature subservient to the Governor's interests.

"Fifth, The Legislature should be kept in session until after the last appropriation bill has been disposed of by the Governor, so that a veto may be overridden if desired, and responsibility for appropriations rest on the Legislature alone.

Department of Public Works
"The Board of Commissioners of Public Grounds and Buildings is entirely unsuited for detailed administrative management. Along with it are a dozen separate boards, commissions, municipal building commissions which a properly organized Department of Public Works could supplant at once, and many more which it could replace eventually. It is time the multiplication of these independent commissions was checked once and for all.

State Purchasing Agent
"It does not appear wise to include a State purchasing agent in the Department of Public Works as the Reorganization Commission proposes. It seems desirable, however, to create the office of State Purchasing Agent, provided it is fully realized that there are limits upon his ability to buy for the widely scattered State institutions. But such an official has nothing in common with the Department of Public Works, any more than with any other State department. The agency should be entirely separate.

Tax Commission
"Valuing property against which taxes are levied, and making and equalizing assessments, are matters which no elected official can be expected to perform in the public interest, and which any single individual will find difficult to withstand. These duties, now divided between the Auditor General and State Treasurer, are to be taken away from both according to the recommendation of the Reorganization Commission, and vested in an appointed tax commission. This is a good recommendation.

"At the same time there should be a complete reorganization of the other duties now ambiguously divided between the Auditor General and the State Treasurer. If those duties should be made appointive, the Auditor General should be recognized in his true capacity as a state controller, and a new and entirely independent auditing office should be set up under the control of the Legislature, substantially as recommended by the Pennsylvania State Association.

Abolishing "Obsolete" Activities
"The Reorganization Commission estimates a possible saving of \$200,000 in each two-year period by reorganizing the duties of some divisions of the State government and discontinuing certain work altogether. The public will await with interest an opportunity to pass judgment on a bill of particulars.

"The tendency to multiply special funds in the State Treasury is simply an invitation to complicated, disorderly and wasteful financing. It is desirable that all special funds except trust and sinking funds be merged with the general fund and that no new special funds be created."

Takes Own Life by Gas
Constasy Wanderer, twenty-seven, was found dead in a room at 324 N. 11th street shortly after 5 o'clock yesterday afternoon. A gas tube was in his mouth. Neighbors say that despondency over the loss of his wife, who left him a week ago, was the cause of the man's killing himself.

After-Dinner Tricks



No. 159—The Balancing Cork
An ordinary cork is dropped on the table, where it immediately stands on end. When spectators attempt to displace the feet they find themselves unable to do so.

For Friday

Store Hours 9 A. M. to 5:30 P. M.
Awnings ordered?
Last year the late, in-a-hurry orders could not be filled. Gimbel work is notably good.

GIMBEL BROTHERS

MARKET · CHESTNUT · EIGHTH · NINTH

Philadelphia, Thursday, May 11, 1922
New Shoe Section for Men — adjoining the
Clothing Store. New values, too!

For Friday

300 MISSES' DRESSES

Their Duplicates Sold Elsewhere at \$25 to \$29.75
These Are Sale-Priced at \$17



And all spick-span new!
All are silks—and mostly crepe silks—some few taffetas—some perfectly fascinating crepeknits—included; the taffetas mostly bouffant; the crepeknits mostly embroidered.

Almost all the crepes are beaded—all-over—or on panels—or in borders—or in motifs—any way and every way Fashion "says it with beads!"

Plenty of lovely high colors—especially hennas—and blues—and jades. But browns, blues and blacks galore.

Sizes for 16, 18 and 20 years.
—Gimbels, Salons of Dress, Third floor.

341 Guaranteed Indestructible Pearl Bead Necklaces, \$1.95

Regular \$5 Value!

The pearls even boiling water won't "peel."
24 inches long; solid gold clasp.

All beautifully graduated. And pearls are especially cool and dainty—and smart—with summer gowns.



278 Pairs of Fine Earrings at \$1

Sterling silver wires and mountings. "Drops" of finest cut "stones" in beautiful "jewel colors." Regular \$2 to \$6 values.
—Gimbels, First floor.

Sale of Double-Panel White Sateen Petticoats at 85c

—But Their Value Is \$1.25

Two styles—both with the shadow-proof double panels. Scalloped or hemstitched.

Extra-sizes—at \$1.25—with full 60-inch hip-measure.

Sample Silk Petticoats at \$3.97

Values Run From \$5.95 to \$9.75

Mostly silk-jerseys—mostly perfectly gorgeous "novelties."
—Gimbels, Second floor.

5000 Yards Woven Striped Slip-Covering

Value at 29c



Launders perfectly—wears splendidly.

\$24.50 Storage Chests at \$19.50

Cedar—of course—the imitably good Tennessee red cedar.

Full 44 inches long.



—Gimbels, Upholstery Store, Fifth floor.



Straightline Coats, Fringe-Trimmed Capes and Wraps —For the Woman Who Wants "Something in Navy Blue or Black."

Of fine Poiret twill or twill cord—of fine, fine tricotine—or of the men's-wear serge that some women wear year-round!

All in smart, yet practical models "without a date"—she can wear it on and on and on! But all with the lovely little new "differences" that mark this spring's models as so unlike last's!

Silk-lined, hand-tailored Capes at \$12.50, \$18, \$28 and \$35.

Silk-lined, hand-tailored Wraps at \$18, \$28, \$39.75, \$55 and \$75.

Silk-lined, hand-tailored Coats at \$18.50, \$25, \$29.75, \$35, \$39.75 and \$55.

Sizes depending upon line—36 up to 48½.
—Gimbels, Salons of Dress, Third floor.

12½c to 45c Wall Papers at 3½c to 18c

3½c for 12½c to 18c Wall Paper, single rolls in blocks, granites and stripes; suitable for bedrooms, dining-rooms and kitchens. Large color assortment.

18c for 45c single rolls of oatmeal wall papers, in tan, brown, green and blue; 30 inches wide; require no trimming or matching; suitable for every room in the home.
Sold with binders or borders to match, at 10c to 15c a yard.
—Gimbels, Fifth floor.

Women's Silk Hosiery at \$1.18

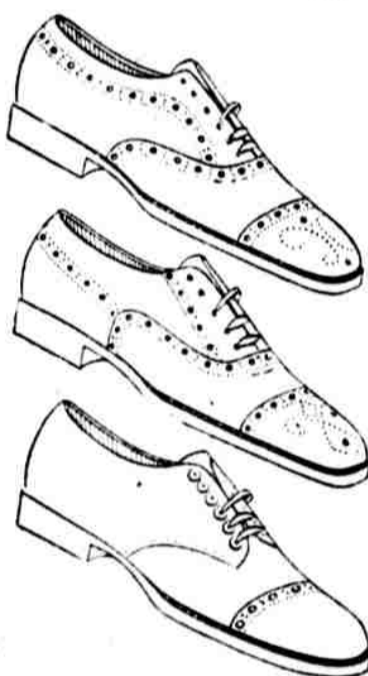
Seconds of \$2 to \$3.50 Kinds

Full-fashioned, \$1.18 a pair. If "firsts," would be priced from \$2 to \$3.50. Black, white and some colors, sizes 8½ to 10, \$1.18.

Women's Pointe silk hose, full fashioned, a wonderful silk; slight seconds of \$3.50 to \$5 grades, black, white and some colors, size 8½ to 10, \$1.68 a pair.

Men's Silk Half Hose at 38c. Run-of-the-mill—would sell for 75c to \$1 if "firsts." All sizes 9½ to 11½.
—Gimbels, First floor.

Opening the New Shoe Store for Men Well-Bought Lots That Have Been Waiting Half Price and Near Half



More than 10,000 pairs of shoes are back of the service of this new Men's Shoe Store—shoes for every preference and for every purpose, in all the wanted leathers and styles.

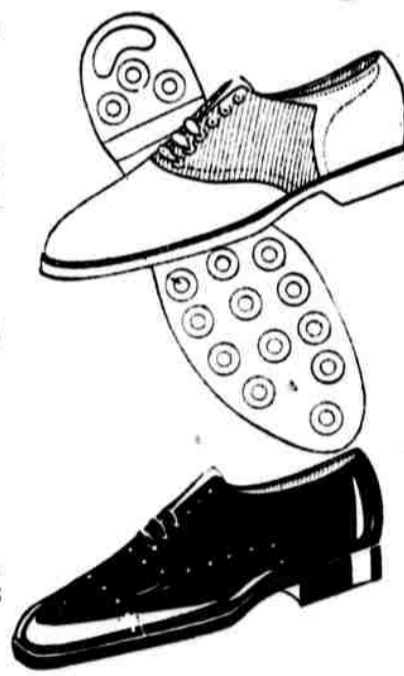
Some of the Opening Specials Are—

Brogues, Bals and Oxfords \$3.85 and \$5.65

Values \$7.50 to \$9

Russia Calf Brogues, Patent Colt Oxfords, Black Kid Oxfords, Rubber-Soled Oxfords, Black Calf Ties.

Brocton (Mass.) shoes, in some forty styles. All are Goodyear-welting, with over-weight oak soles; grain insoles—solid through and through! \$3.85 and \$5.65.
—Gimbels, Second floor, Ninth Street Side.



Willow Summer Furniture in the Cottage Furniture Sale

Shown in new sports finishes done in our shops; and cushions and upholstery as selected by you.

3-Piece Suits "Toffee Brown" (Two-Tone), Complete with Seat Cushions, at \$45



Tables are at various prices. Special Bar Harbor Chairs and Rockers with seat and back cushions, finished in "Toffee" Brown or Ivory.
Rockers, Special at \$10.50
Arm Chairs at \$9.50

Fiber Table and Four Chairs, Baronial Finish, Complete \$30

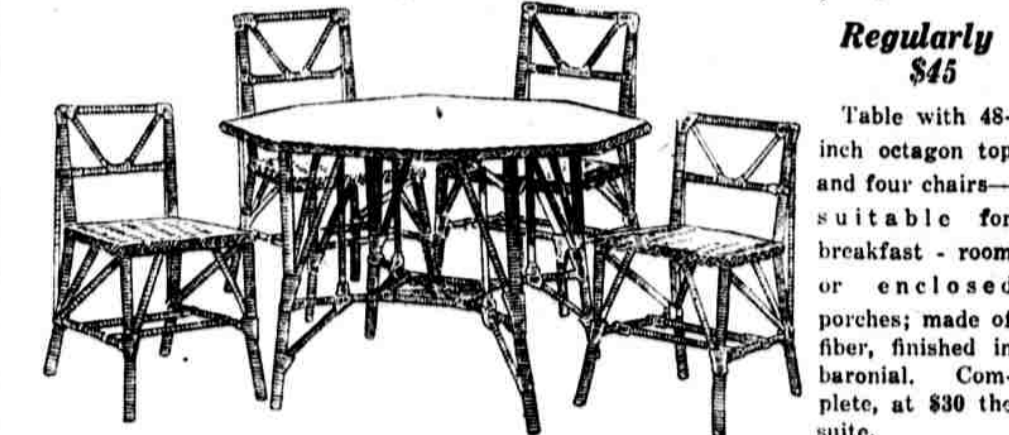


Table with 48-inch octagon top and four chairs—suitable for breakfast-room or enclosed porches; made of fiber, finished in baronial. Complete, at \$30 the suite.



Rustic Flower Stands Made of Cedar, at \$2.50

Other Rustic Cedar Summer and Lawn Furniture

8-ft. Archways at \$22
Cedar Gateways at \$45
Oblong Tables at \$10
White House Arm Chairs at \$3.50
Florida Settees at \$7.50
Cedar Pergolas at \$55
Admiral Arm Chairs at \$7.50
Rustic Cedar Umbrella Seats, \$35
Klondike Settees at \$10

\$109 Bungalow Equipment — Pair of Brass Bedsteads, Mattress and Spring



In This Outfit We Will Furnish—
Pair silk floss Mattresses. Regularly priced \$42
Pair brass Bungalow Bedsteads. Regularly priced 60
Pair steel Springs. Regularly priced 17
\$67 Complete
—Gimbels, Ninth floor.

Subway Store Specials Friday a New Bargain Day

- 4 lbs. 40c Coffee for 85c
5000 lbs. Purity Blend. —Gimbels, Subway Store.
- Silk Waists at \$1 —Were \$2 to \$3.95
Some over-blouse and tie-back models. Sizes 36 to 40. —Gimbels, Subway Store.
- \$13.95 Dinner Sets at \$7.95
Bluebird decoration. 51-piece; complete for 6 persons. —Gimbels, Subway Store.
- 30c Heavy Canton Flannel at 15c
34 inches wide. —Gimbels, Subway Store.
- Women's Low Shoes at \$1.35 Specials!
—Gimbels, Subway Store.
- 75c French Serge, 58c a Yard
Navy, brown, garnet. Fine twill weave. —Gimbels, Subway Store.
- Ribbon at 10c a Yard
¾ to 2 inches wide; two-toned satin; picot edge and fancy. —Gimbels, Subway Store.
- Turkish Bath Towels, 4 for 50c
Good absorbent quality. Medium size. —Gimbels, Subway Store.
- Children's Hats and Caps, 25c to \$1
Lingerie, pique, lawns and straws. —Gimbels, Subway Store.
- 25c to 28c Dress Gingham at 15c
Mill lengths. 32 inches wide. —Gimbels, Subway Store.
- 25c White Jersey Cloth at 15c
Yard wide. Enough for tomorrow only. —Gimbels, Subway Store.
- \$1 and \$1.25 Bungalow Aprons at 68c
100 dozen. Light and dark percales. —Gimbels, Subway Store.
- \$1.50 Silver-Plated Bread Trays at \$1
Bright finish. —Gimbels, Subway Store.
- 25c Chocolate-Covered Nut Squares, 18c lb.
2 lbs. for 35c. —Gimbels, Subway Store.
- \$2.85 Jersey Silk Petticoats at \$1.50
—And Pantaloons. Clearance of small lots at \$1.50. —Gimbels, Subway Store.

Subway Store Dresses Sale-Grouped at \$15

But \$27.50 to \$35 Values
Mostly Canton crepes—color-beaded—color-faced—color-embroidered—Paisley-trimmed—flying-paneled—two-color combinations—ribbon-paneled—but-ton-trimmed—tasseled.
Taffetas, too.
And crepe-knits.
Misses' sizes for ages 16 and 18.
Women's sizes, 36 to 44.
—Gimbels, Subway Store.



- \$1.95 House Dresses, \$1
Gingham, few chambrays; some jumper models. —Gimbels, Subway Store.
- Women's \$1.50 Silk Gloves } 59c
at—
12- and 16-button lengths; slightly mused; not a large lot!
—Gimbels, Subway Store.
- \$18 Tapestry Brussels Rugs, 9x12 ft., \$10
Seamed or one-piece. —Gimbels, Subway Store.
- Fly Screens
18 in. x 21 in.—opens to 33 in.—50c.
24 in. x 21 in.—opens to 33 in.—60c.
24 in. x 23 in.—opens to 37 in.—65c.
Metal centers, walnut stained frames. —Gimbels, Subway Store.
- Men's Pajamas, \$1.15
Slight seconds of highest grade.
Men's muslin Night Shirts at 78c. —Gimbels, Subway Store.
- Women's Sweaters, 75c
Sleeveless, slip-over and surplice styles. All colors. Sizes 36 to 46. —Gimbels, Subway Store.
- Men's \$17.50 and \$20 Suits at \$12.50
All sizes, but not in all patterns. For men and young 'men. —Gimbels, Subway Store.
- Women's 50c Collar and Cuff Sets— } 25c
Eyelet-embroidery and organdy. —Gimbels, Subway Store.
- \$1 Corsetlettes at Two for— } \$1
Maker's sample line of Bandeaux and Brassieres. —Gimbels, Subway Store.
- "Seconds" of Men's 40c Half Hose at 22c
Mercerized lisle. —Gimbels, Subway Store.
- \$1.50 Black Silk Taffeta at 98c
All silk. Good quality. —Gimbels, Subway Store.
- "Seconds" of Boys' \$1.25 Koveralls, 85c
Sizes 2 to 8 years. —Gimbels, Subway Store.
- Youths' High School Suits With Extra Pair of Trousers at \$12.50
Not all sizes in every pattern, but all regular sizes in the lot. —Gimbels, Subway Store.
- 60c and 65c Figured Sateens at 25c
Mill ends—when sold from full pieces, 40c and 50c a yard. —Gimbels, Subway Store.