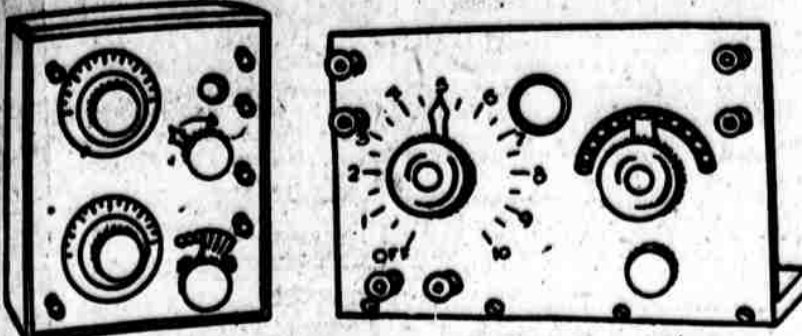


RADIO IN THE HOME

By HENRY M. NEELX



Here are two typical pieces of apparatus. To the left is a cabinet containing the "single circuit" hook-up explained in the accompanying article.

How to Operate the Regenerative Single Circuit

The hook-up given in the last article is not a difficult one to operate. In fact, it is so much simpler than most that the majority of the sets you buy assembled in small cabinets use it or something very like it.

If you are using a loose coupler or a variocoupler, you will have some means of varying the number of turns of wire you employ on the primary coil.

It will be by means of a slider on the variable condenser which rotates over a semi-circle of brass or nickel points, each one of which connects up an extra section of the coil.

With the average amateur aerial, it is best to begin with about twenty turns of wire on a four-inch diameter coil if you want to receive the broadcasting stations.

You have two adjustments then to make—turning the knob of the variable condenser slowly all the way around the scale and back two or three times, at the same time performing the same operation with the rotor.

If it is a variocoupler or drawing the inner coil of a loose coupler out all the way and pushing it back. In this way you will find the best point for the operation of adjustments.

If this brings you no signals, move the primary switch over to the next "ten" point and repeat the process until you finally hear a signal.

When you detect a sound of distortion or clicking or moaning or howling, turn the knob back a bit, for that sound is a warning that you are putting a dangerous amount of current into your bulb.

It is always best to use the least amount of filament current that will give you satisfactory signals.

If you are using honeycomb coils in this circuit, you will find the best results for 800 meters with the coil known in the trade as "L. 750."

With the home-made spider web or basket woven coils, the primary for the broadcasting stations should have about sixty or seventy turns with the usual amateur aerial and, oddly enough, I have found that the tickler that gives the best results is one with between 100 and 110 turns.

If you are going to use these spider web coils (and they are very efficient and lots of fun to make) I strongly advise making both of 110 turns, tapping each single-turn of the inside ten and ten of the rest.

Later we will show how these coils are made and tapped and used. But don't attempt to tap them until you have learned to solder and have an outfit.

Today's Programs

Philadelphia Station (WIP) (Strawbridge & Clothier)

11:15 P. M.—Late news items from PUBLIC

11:30 P. M.—Address by Mrs. Frederick W. Abbott, supervising director Philadelphia

8:40 to 9:30 P. M.—Music of Northern

9:30 to 10:30 P. M.—Music of Northern

10:30 to 11:30 P. M.—Music of Northern

11:30 to 12:30 P. M.—Music of Northern

12:30 to 1:30 P. M.—Music of Northern

1:30 to 2:30 P. M.—Music of Northern

2:30 to 3:30 P. M.—Music of Northern

3:30 to 4:30 P. M.—Music of Northern

4:30 to 5:30 P. M.—Music of Northern

5:30 to 6:30 P. M.—Music of Northern

6:30 to 7:30 P. M.—Music of Northern

7:30 to 8:30 P. M.—Music of Northern

8:30 to 9:30 P. M.—Music of Northern

9:30 to 10:30 P. M.—Music of Northern

10:30 to 11:30 P. M.—Music of Northern

11:30 to 12:30 P. M.—Music of Northern

12:30 to 1:30 P. M.—Music of Northern

1:30 to 2:30 P. M.—Music of Northern

2:30 to 3:30 P. M.—Music of Northern

3:30 to 4:30 P. M.—Music of Northern

4:30 to 5:30 P. M.—Music of Northern

5:30 to 6:30 P. M.—Music of Northern

6:30 to 7:30 P. M.—Music of Northern

7:30 to 8:30 P. M.—Music of Northern

8:30 to 9:30 P. M.—Music of Northern

9:30 to 10:30 P. M.—Music of Northern

10:30 to 11:30 P. M.—Music of Northern

11:30 to 12:30 P. M.—Music of Northern

12:30 to 1:30 P. M.—Music of Northern

1:30 to 2:30 P. M.—Music of Northern

2:30 to 3:30 P. M.—Music of Northern

3:30 to 4:30 P. M.—Music of Northern

4:30 to 5:30 P. M.—Music of Northern

5:30 to 6:30 P. M.—Music of Northern

6:30 to 7:30 P. M.—Music of Northern

7:30 to 8:30 P. M.—Music of Northern

8:30 to 9:30 P. M.—Music of Northern

9:30 to 10:30 P. M.—Music of Northern

10:30 to 11:30 P. M.—Music of Northern

11:30 to 12:30 P. M.—Music of Northern

12:30 to 1:30 P. M.—Music of Northern

1:30 to 2:30 P. M.—Music of Northern

2:30 to 3:30 P. M.—Music of Northern

3:30 to 4:30 P. M.—Music of Northern

4:30 to 5:30 P. M.—Music of Northern

5:30 to 6:30 P. M.—Music of Northern

6:30 to 7:30 P. M.—Music of Northern

7:30 to 8:30 P. M.—Music of Northern

8:30 to 9:30 P. M.—Music of Northern

9:30 to 10:30 P. M.—Music of Northern

10:30 to 11:30 P. M.—Music of Northern

11:30 to 12:30 P. M.—Music of Northern

12:30 to 1:30 P. M.—Music of Northern

1:30 to 2:30 P. M.—Music of Northern

2:30 to 3:30 P. M.—Music of Northern

3:30 to 4:30 P. M.—Music of Northern

4:30 to 5:30 P. M.—Music of Northern

5:30 to 6:30 P. M.—Music of Northern

6:30 to 7:30 P. M.—Music of Northern

7:30 to 8:30 P. M.—Music of Northern

8:30 to 9:30 P. M.—Music of Northern

9:30 to 10:30 P. M.—Music of Northern

10:30 to 11:30 P. M.—Music of Northern

11:30 to 12:30 P. M.—Music of Northern

12:30 to 1:30 P. M.—Music of Northern

1:30 to 2:30 P. M.—Music of Northern

2:30 to 3:30 P. M.—Music of Northern

3:30 to 4:30 P. M.—Music of Northern

4:30 to 5:30 P. M.—Music of Northern

5:30 to 6:30 P. M.—Music of Northern

6:30 to 7:30 P. M.—Music of Northern

7:30 to 8:30 P. M.—Music of Northern

8:30 to 9:30 P. M.—Music of Northern

9:30 to 10:30 P. M.—Music of Northern

10:30 to 11:30 P. M.—Music of Northern

11:30 to 12:30 P. M.—Music of Northern

Introducing the New Rockingchair Golf and Tennis Shirt Suit



A Scientific Combination of Outer Shirt and Athletic Drawer At \$4.00

Fashioned above the belt line as a shirt, topped off with an unusually well-fitting collar which looks well either buttoned or unbuttoned.

Fashioned below the belt line to fit as comfortably as your trousers, with closed crotch, exactly like trousers.

Carefully cut and designed to allow ample fullness and perfect freedom, and to remain permanently in place.

All garments made and marked in both underwear size and collar size, insuring perfect fit. Be sure to state both sizes when ordering.

- Men's Sweater Coats for Golf Wear—Lock-Stitch Knit Coats \$4.85 and \$5.85 Ea. Shaker-Knit Jackets and Pullover Sweaters \$6.35- \$7.35 and \$8.35 Ea. Men's Tan Pongee Shirts, Each \$1.47

SNELLENBURG'S

Three Big Lots of Snellenburg Clothing for Men That Are Mighty Fine Values at These New Low Prices

Men's and Young Men's \$27.50 to \$37.50 Spring Suits Taken Right Out of Regular Stock and Reduced to \$23.00

Men's and Young Men's \$40.00 to \$50.00 Spring Suits Taken Right Out of Regular Stock and Reduced to \$33.00

Men's and Young Men's \$30 to \$40 Spring Top Coats at \$25.00



Tweeds, chevots, gabardines and unfinished worsteds. Loose-fitting styles with raglan or regulation shoulders.

Also a Great Special Sale of Men's \$6 to \$8 New Spring Trousers \$4.35 Pr.

Trousers in all sizes—and in such a splendid variety of patterns, fabrics and colors that every man can find a pair to fit and suit him.

Bring in your coat and vest—if we haven't a pair of trousers to match them exactly, we can give you something that will harmonize.

The Very Smart New Snellenburg Veil

As Pictured at \$3.25



So Designed That It Can Be Worn in Any of Three Distinctively Smart Styles

Of soft, beautiful Georgette, and fitted with a large buckle, through which the veil is drawn: snapping into place and flaring at the side or partly covering the face, Harem style or entirely covering the face, in chic motor effect.

RADIO! - RADIO!

We are prepared to supply you anything in the Radio line from complete set to smallest part.

WALKER & KEPLER 531 CHESTNUT ST.



Wonderfully smart effects characterize the new offerings in

FIBRE RUGS

They add a light, gay note to room and porch.

SUMMER RUGS

The "Rattania" and "Stand-wears" come in the much-admired pastel shades and at most reasonable prices.

HARDWICK & MAGEE CO. Floor Coverings Exclusively 1220 MARKET ST.

12 BIG Values From Fourth Floor Rug and Linoleum Depts. \$24.00 9x12 Reversible Wool-and-Fiber Rugs at \$14.95

6x12 Rattania & Art Supreme Rugs at \$12.75

100.00 8.3x10.6 Royal Wilton Rugs \$73

\$15.50 8x10 W. & J. Sloan Willow Rugs at \$9.25

\$24.50 9x12 Colonial Rugs at \$13.95

\$100 to \$120 9x10.6 Finest Royal Wilton Rugs at \$76.50

\$11.50 6x9 Colonial Hit or Miss Rag Rugs at \$7.50

7.6x9 Reversible Fiber Rugs \$10.75

100 \$5.00 36x72 Crex De Luxe Rugs \$2.15

Linoleum Specials \$1.35 4-Yd. Wide Best Cork 78c Sq. Yd. Linoleum

\$2.25 2-Yd. Wide Heavy \$1.35 Sq. Yd. Inlaid Linoleum

\$2.25 Reversible Stair and Hall Carpet, Yard \$1.15



NEMO WEEK

The Popularity of NEMO WEEK can be measured by the throngs of eager women who flock to our Corset Salon during this week, and we have an unusual attraction in store for you in the daily exhibitions of



No. 444 Special at \$5.00

Mrs. Sarah D. McArdle will assist you in selecting the right model for your figure.

Today's China Specials In the May Sale

Regular \$20 American Porcelain Dinner Set \$12.95

Chinese Lanterns - Transparent Glazed

100 pieces with pretty border decoration and gold-line edge and handles \$3 Cut Glass Ice Tea Sets \$1.45

15-Inch \$1.00 18-Inch \$1.50 21-Inch \$2.00 20-Inch \$2.50

Reg. \$20 and \$25 Silk Floor Lamp \$13.45 Shades

Reg. \$2.00 Cut Glass Cheese and Cracker Dish or Handled 95c Sandwich Tray

Floral cutting with foliage

Sample shades, various shapes and colors, trimmed with silk and chenille fringe.

Now Fully Launched and Breaking All Records!!! Our Tremendous Annual May Sale of Women's Low Shoes Involving Tens of Thousands of Pairs in the Newest, Most Popular Modes—All Made to Our Special Order. Kinds Selling Elsewhere at \$7, \$10 and Even \$12 Pair.

At \$3.85 Pair

The one big Shoe event that Philadelphia women annually look forward to—a sale requiring whole months of preparation. Assortments are finer, more varied than ever—stocks are tremendous, including in some instances the entire output of leading factories—and qualities absolutely up to our own specifications.

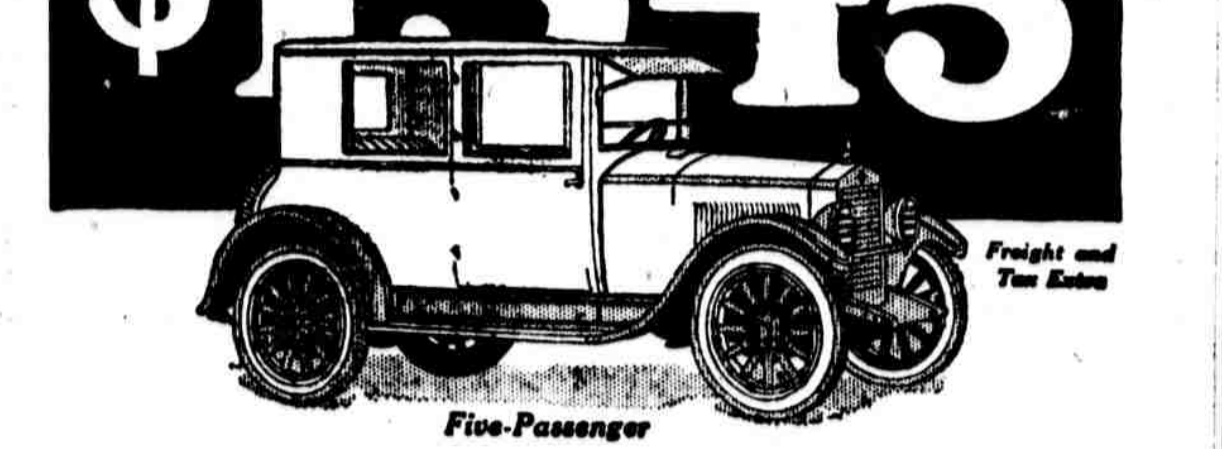
- One-Strap Pumps In black satin, black kid, patent colt and patent colt with gray suede backs. High or low French heels; also low, flat heels. Mary Jane Button or Buckle Pumps In patent colt and tan calf. Low, flat rubber heels. Wetted Sole Oxfords In black kid, tan calf and brown kid. Military or low, flat rubber heels. Wetted Sole One-Strap Pumps In black kid, patent colt, brown kid and tan calf. Rubber military heels. Rubber Sole Sports Oxfords With smoked elk vamp; plain toes and tan calf aprons.

Now is the Time to Secure Your Entire Summer Supply of Fine Footwear!



More Than 200 Styles—All Sizes 2 1/2 to 9, AA to D Widths—Sizes Plainly Marked on Soles of Shoes and Placed on Separate Tables.

ESSEX COACH \$245



Closed Car Comforts at a Wonderful Price

Come see how well it meets your desires. It is a new type. It has beauty, utility and a price attraction such as no car ever combined. Light and compact it is ideal for business and professional men. It is economical and enduring. It is solidly built, calls for little attention and is unusually free from even minor annoyances. Women admire its beauty. Upholstery and fittings are of good, long wearing quality. And the Coach continues the economy of its low first cost in long enduring service and small operation costs. The Coach was built for those who demand such qualities. You will be pleased with it.

GOMERY SCHWARTZ MOTOR CAR CO. Sales Room, 122-140 North Broad—Service Station, 2400-14 Market St.