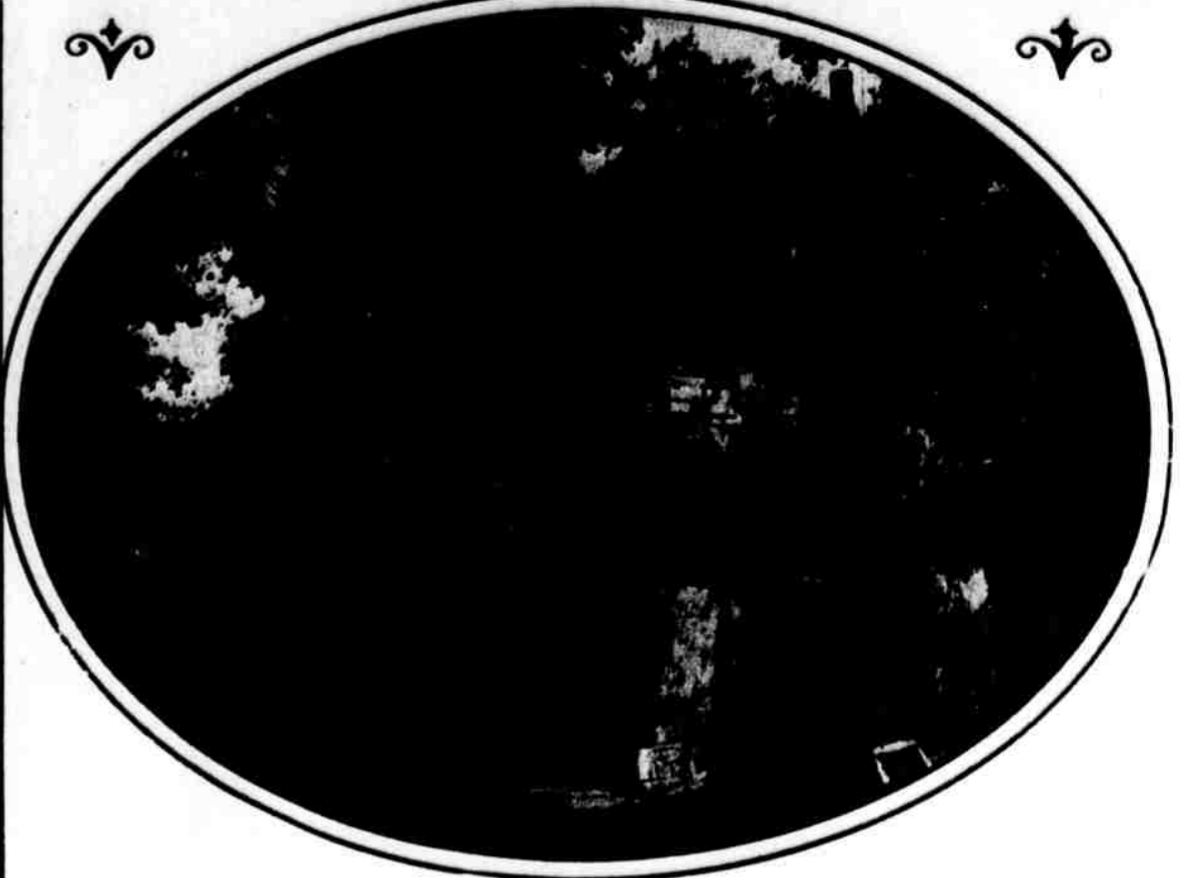


THE SCENE OF GRANT'S DARKEST HOURS; the interior of the humble cabin on the farm near St. Louis from which, from 1854 to 1860, he vainly sought to wrest a living. The pictures and the lantern are modern embellishments



THE LOG CABIN ON THE MISSOURI FARM BUILT BY GRANT WITH HIS OWN HANDS IN 1856. The farm of sixty acres was given to him by his father-in-law when he resigned his commission in the army. In 1860 he gave up the struggle and removed to Galena, Ill., to clerk in his brother's store, where he was when the call to arms came



DUTE TO ARY HERO The grim that stands ark. It was French and



THE WIFE, MRS. ULYSSES S. GRANT. She was Julia Dent, of St. Louis, sister of one of Grant's classmates at West Point. They were married in 1848. She died in 1902



GENERAL ROBERT E. LEE

GRANT'S COURTLY AND CHIVALROUS ADVERSARY. Fighting on devotedly and unselfishly, for a foredoomed cause, he brightened by his great ability the luster of the victor's glory (cf. Review of Reviews Co.)



GRANT'S VETERANS BEFORE PETERSBURG, 1864. The siege of Petersburg, one of the most memorable in history, lasted from the early summer of 1864 to April 2, 1865, when Lee evacuated both Petersburg and Richmond. In this campaign Grant originated most of the ideas in trench warfare thought new in the World War (cf. Review of Reviews Co.)



GRANT AS THE EIGHTEENTH PRESIDENT OF THE UNITED STATES. His face is fuller than in the wartime portraits, but his beard and hair are beginning to show the gray touch of years

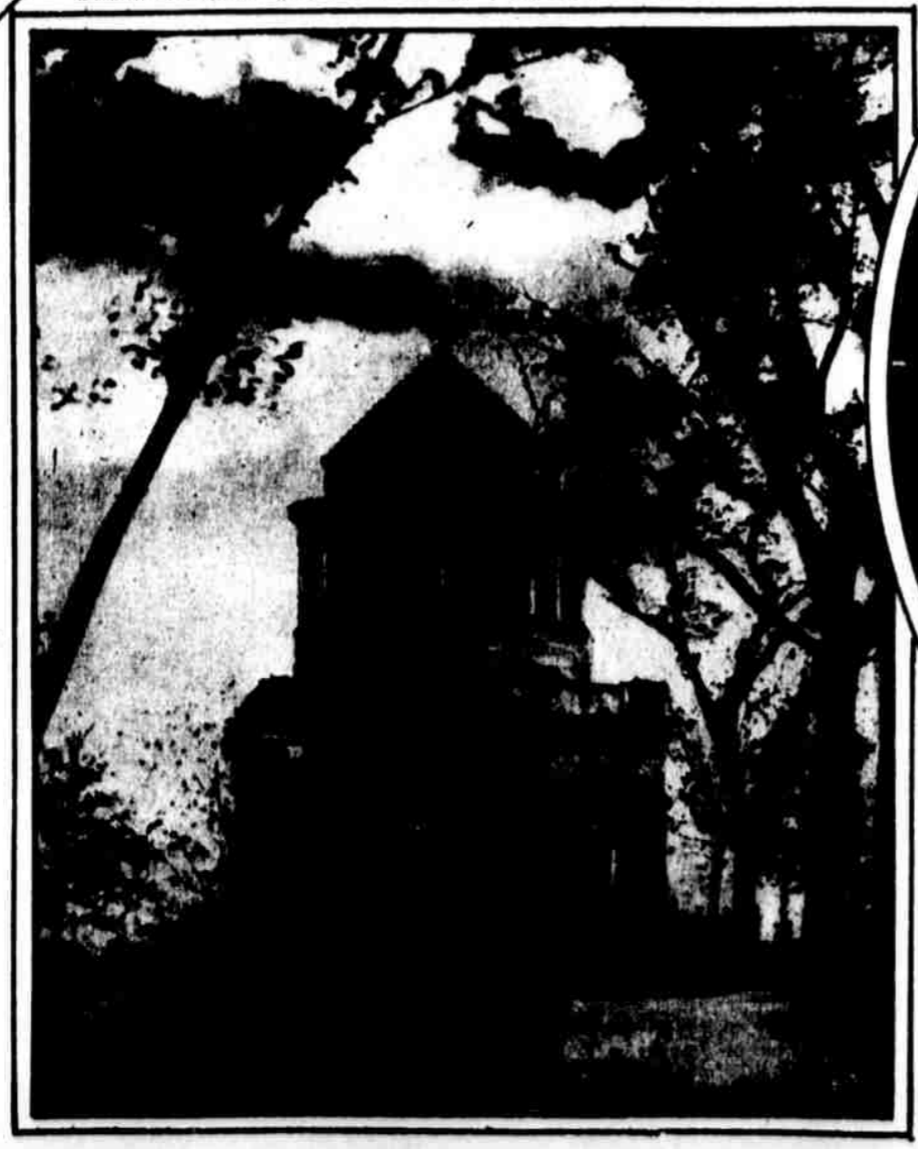


GRANT'S GREAT "RIGHT HAND" WILLIAM TECUMSEH SHERMAN, WITH HIS GENERALS. Left to right, Major General O. O. Howard, Major General John A. Logan, Major General W. H. Hazen, Major General Sherman, Major General Jeff C. Davis, Major General H. W. Slocum and Major General J. A. Mower (cf. Review of Reviews Co.)



A RARE PHOTOGRAPH OF GRANT WITHOUT THE CHIN BEARD. It was made while he was President. He wore his beard so for a short time in order that a medal might be made of his face, but soon went back to the full beard

HIS FINAL RESTING PLACE, THE GRANT TOMB ON RIVERSIDE DRIVE, NEW YORK. When he was here laid to rest on August 8, 1885, the entire Nation went into mourning. The present mausoleum was erected in 1893. Mrs. Grant was laid by her husband's side in 1902



THE FINAL SCENE AT MOUNT MCGREGOR. Grant and his family on July 19, 1885, just four days before his death. In the group are, left to right, U. S. Grant, Jr., Mrs. Grant, Mrs. Nellie Grant Sartoris (standing), Julia Grant, daughter of Fred D. Grant, General Grant, U. S. Grant, 3d, son of Fred D. Grant, with his mother, Ida Honore Grant (on the step), and Colonel Fred D. Grant (standing)

MOUNT PARK. The cabin has been erected during the long siege of Richmond