

Store Hours, 9 A. M. to 8:30 P. M.

# GIMBEL BROTHERS

MARKET · CHESTNUT · EIGHTH · NINTH

Radio broadcasting by Gimbel's Saturday evening, 7 to 8. Demonstration every day in the Radio Section, Seventh floor.

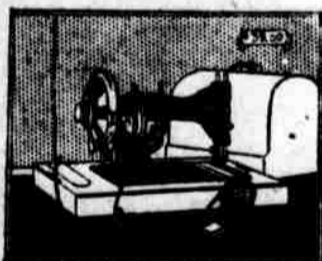
For Saturday

For Saturday

Radio Headquarters—Gimbel's. Government permit for broadcasting was issued simultaneously to two stores, but in supplying sets and parts for home equipment, Gimbel's lead.

**Tomorrow At Gimbel's**  
**\$60 Electric Portable Sewing Machines \$39**

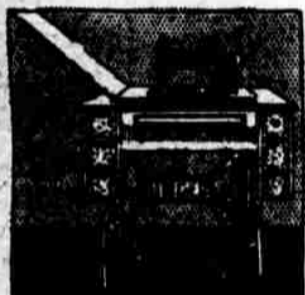
Less Than Original Wholesale Cost



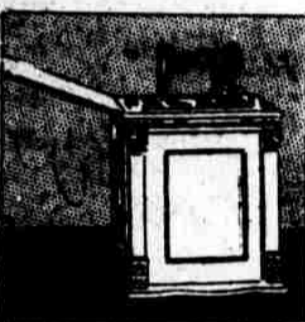
So great has the demand been for these electrics that we've been unable to secure as many as we would like. But we have enough for a day's selling. At \$39.

Weekly Terms—\$1 No Interest

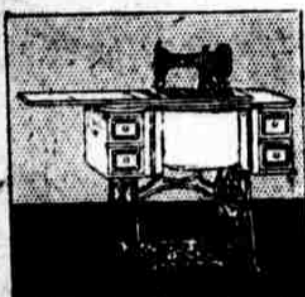
Five Famous Domestic Make Sewing Machines at Lowest Prices in Town!



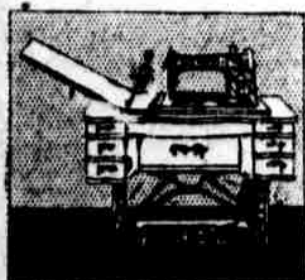
\$60 Singer : \$39 Slightly Used



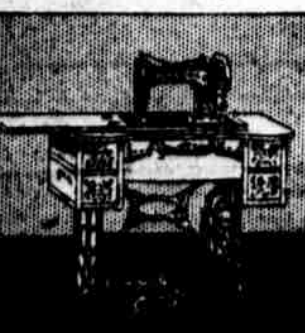
\$59 New Willard Cabinet : \$47



\$49 New Home : \$31 Floor Samples



\$65 Domestic : \$55



\$39 Domestic : \$19 Slightly Used

**Tomorrow Sale of Women's Coats, Capes, Wraps and Sports Coats**

at **\$28** Values \$39.75 to \$49.75

Fine shawls and bolivia makes most of the capes and dressy wraps. Tricotine makes a beautiful cape model. Chinchilla makes a perfectly stunning sports model. Tan coaching cloth makes a typical English sports coat. The Capes and Wraps are to be had in black, navy, deer, henna, ladybird and beige. The Sports Coats—in tan or rose.

—Gimbel's, Sales of Dress, Third floor.

**Girls' Capes**  
 —With the New Fringed, Throw-Tie Collars

**Special at \$6.95**

So "Special" That They Exactly Reproduce a \$13.75 Original!

Sleeve-slits for her arms to wriggle through. Double-breasted—with a double row of buttons. Rose, tan, and blue. And the perfectly grown-up way Miss Sixteen throws one end of her scarf-collar over her shoulder, tells how much she likes it!

—Gimbel's, Sales of Dress, Third floor. \$6.95

**The Smartest, Smartest Misses' SUITS**  
 Sale-Specialized

at **\$19.75**  
 at **\$25** and  
 at **\$29.75**

Twenty-five styles distributed among the price-groups. All tweeds in each. All the fashionable shades of all the fashionable colors in each price-group—all the tans, the sands, the cafe au lait, the browns, the grays, the roses, the corals, the helios, the orchids. Capes with skirts. Capes with dresses that have killed skirts. Coats with skirts. Sleeveless coats with dresses. Man-cut. Man-tailored. Man-finished. Man-pressed. 14- to 20-year sizes in each style.

—Gimbel's, Sales of Dress, Third floor.

**Pool Tables Half Price Clean-up**

For cottages, bungalows and summer houses—

3x6, Special	\$31.95	\$68.85
3x8, with rack, Regular	\$37.55	\$74.75
3x8, best,	\$43.75	\$101.00
3 1/2 x 6 1/2, best,	\$49.25	\$106.75
4 1/2 x 9,	\$100.00	\$200.00
3 1/2 x 7, best,	\$52.50	\$117.50

—Gimbel's, Fourth floor.

**Famous Waltham Wrist Watches \$19.75**  
 \$35 Value

A fine 15-jeweled movement, cased in a 20-year guaranteed gold-filled case. An excellent timepiece and fully guaranteed.

—Gimbel's, Gold Jewelry Shop, First floor.

**18,000 Pairs of Women's Low Shoes At \$4.10 a Pair**

Makers Meant Them to Bring \$11

Spring's smart sports oxfords, walking oxfords and brogues. Also strap and dress effects.

Also Women's Low Shoes, short lines and broken sizes, at **\$3.20**

—Gimbel's, Shoe Store, Second floor.

**—For Tomorrow—Two Hundred More \$12 Opossum Fur "Chokers" at \$7**

And how the first lot were snapped up last Saturday!

Made in the fashionable double fur, one-skin animal style. Mounted head. Brush tail. Baum-marten and stone-marten colorings.

—Gimbel's, First floor.

**The Fact That There Are Thirty Styles in Women's Suits at \$25**

Is Just One Reason of Many Why Gimbel \$25 Suits Are Famous

These are some more reasons: Gimbel's are first with newest suit-fashions: Gimbel's have more color-variety in this color season than anywhere else in Philadelphia or New York; All Gimbel Suits are man-tailored—and expert man-tailoring. All sizes—34 to 48—are adequately provided for with the right lines. Two- and three-piece styles. Complete dress with cape or sleeveless dress with cape. Cape or Coat with Skirt. \$25.

—Gimbel's, Sales of Dress, Third floor. \$25

**Here Are \$6 and \$7 Ready-to-Wear Hats at \$3.95**

The favorite Milan-hemp shapes; in roll-up brim, drop-brim and poke-shapes, with the new dented crowns. Trimmed with the fascinating "padded fruits"—apples or grapes or cherries (or any thing!) made of silk and stuffed to shape.

—Gimbel's, First and Third floors.

**1000 5-lb. Boxes Assorted Chocolates at \$1 a Box**

Comprising nougats, caramels, marshmallows, pecan tops, maple, walnuts and others centers, at less than half price—\$1 for the 5 lbs. Highest-grade Crystallized Canton Ginger, value \$1.25, } 58c

1-lb. boxes at—  
 50c Cream Almonds, 1-lb. boxes at 25c.

—Gimbel's, Chestnut Street Annex and Subway Store.

**Full Over-Size Columbus Cord Tires**  
 8000-Mile Guarantee Adjusted on Selling Prices

These tires are built for service—and they give it!

30x3 1/2	\$14.40	34x4	\$27.40	35x4 1/2	\$36.16
32x3 3/4	20.40	32x4 1/2	33.50	36x4 1/2	36.92
32x4	25.95	33x4 1/2	34.28	33x5	41.72
33x4	26.72	34x4 1/2	35.12	35x5	43.90
		37 x 5			\$46.08

**STOP SIGNAL**  
 Regular \$5 Stop Light, complete Wire, Switch and all } \$1.25  
 Fittings. Special at.....

—Gimbel's, Fourth floor.

## Men's Kuppenheimer and Society Brand Suits for Spring—\$35 to \$60

Gimbel's Are Philadelphia Agents

Clothes of high standard consistently maintained, as to all-wool materials, fineness of fabric, quality of making and accuracy of fit. Clothes that mark the well-dressed man—dignified styles for conservative tastes and snappy models for young men.



**Kuppenheimer and Society Brand**  
 Men's and Young Men's Suits: **\$35**

Quarter-Lined Silk-Piped

Two-, three- and four-button models; single- and double-breasted; also sports models. Newest worsteds, velours, tweeds, chevots, serges and flannels.

**Other Suits up to \$60**  
 Men's Society Brand Suits  
 In a Clearance of All Medium Weights

Mostly Quarter-Lined and Silk-Piped

Now **\$25** Were \$40, \$45 and \$60

From Other Sources of Supply—  
**Spring Top Coats, \$25**  
 And London-Made Gabardines—  
 Snappy new tweeds and chevots; iridescent worsteds. Special at \$25.

**London-Made Overcoats And Gabardines \$35**

Fews of a Kind—And Just Off the Boat

Chevots and tweeds; West-of-England coverts and gabardines. Set-in and raglan sleeves. Double-breasted, belted. A great assortment! \$35.

—Gimbel's, Second floor, Ninth Street.

**Men's Ties—Specials**  
 Four-in-Hands at 75c  
 Bow Ties at 65c  
 Made of Italian Twill

This is a serviceable silk with a good body, and makes a correct knot. Figures and color-dots on contrasting grounds—varied choosing in good patterns. 65c for Bow Ties. 75c for Four-in-Hands.

—Gimbel's, First floor, Ninth Street.

**Norfolk Suits**  
 With Extra Pair of Knickers for Boys From 8 to 18 Years **\$12.50**

Many models, carefully tailored from fine quality all-wool cassimeres in neat gray or brown mixtures, or stripes. Coats are mohair lined, most of the knickers have belt and buckle.

**Junior Suits From \$5 to \$10**  
 For boys from 3 to 10 years old. Oliver Twist models with broad-fall trousers, Middy styles and Junior Norfolks in blue serge, tweeds or cassimeres.

**Boys' Overcoats, \$10, \$12.50, \$15**  
 Sizes 8 to 12 years. In tweeds, polo cloths or blue serge.

—Gimbel's, Third floor.

**In the Subway Store Girls' Spring Coats With Tam to Match Special at \$13.75**

The new "rough stuff" coatings. Favorite sports model, with four big patch pockets, and the all-popular belt. And the tam is the cutest thing imaginable! Other materials—other styles—included in the lot.

**Girls' \$10 to \$12.50 Tweed Coats and Capes at \$7.50**

The new spring colors. All sizes—6 to 14.

—Gimbel's, Subway Store.

**Tomorrow—In the Subway Store 2700 Pairs of SHOES Sale-Priced at \$1.95**

The sturdy type of shoe that takes the knocks and "comes back" for more. The uppers are of soft pliable leather—yet "tough." Perfect-fitting lasts. Remarkably strong soles. Any size at \$1.95.

**2000 Pairs of Women's Low Shoes—\$1**  
 \$5 and \$6 Values  
 Patent leather and kidkin.

—Gimbel's, Subway Store.

**Subway Store—New Spring Styles are Here!**  
 Men's and Young Men's Top Coats and Suits—**\$15 : \$20 : \$25**

The Suits Have Extra Trousers

All the new features will be found in these stylish suits—two- and three-button sack models with soft roll lapel. Single- and double-breasted. Blues, browns, different tones of gray. And herringbones, and mixtures. Worsteds, serge, cassimeres, chevots and tweeds, \$15, \$20 and \$25. The Overcoats are medium weights; quarter silk-lined. About half are conservatives, \$15, \$20 and \$25.

**Boys' All-Wool Norfolk Suits—\$9.50**  
 With Extra Pair of Knickers  
 Mohair-lined. Spring styles. For boys of 7 to 17 years.

—Gimbel's, Subway Store.