

Store Hours, 9 A. M. to 5:30 P. M.  
**For Wednesday**

Think of getting a brand-new Pathe Phonograph for \$18—but the lot will soon sell out. Any model at one-third the full price.

# GIMBEL BROTHERS

MARKET · CHESTNUT · EIGHTH · NINTH

Philadelphia, Tuesday, February 28, 1922  
 A woman can look pretty all the time. "Nina Taylor" house-dresses and aprons solve the problem.

**For Wednesday**

## The Rose Queens It In Paris Millinery



—As She Does Over Nature's World of Flowers  
**Opening Days!**

Sometimes just a great, gracious rose by itself. Sometimes rose-color instead of rose-flower—Paris is fairly reveling in rose-tones—and rose-petals—and rose-colored facings. And in the new *fram-bois* (raspberry).

**But Flowers? Flowers Are Everywhere!**

Under brim, tucked into the crown. Standing up. Drooping down. Massing the crown.

And—oh, the huge black hats with just one gorgeous, brilliant, artistic, beautiful, irresistible, imitable rose for trimming! Paris, Paris, Paris!

—Gimbels, Millinery Salons, Third floor.

## Women's Customized Suits —But at \$39.75 to \$95



And variety, at each price, in her size, whatever her size may be, whether 34 or 48, or any size-type between. Is there a single custom tailor in America, no matter what you pay him, who can let you try on model after model, in your size, so that you can see how you'll actually look?

"Variety" at Gimbels, Means—

Fabric-variety—Fashion's newest tweeds and kashas and sponsteens and trélines, maras and melrossa—and the staple tricotines and Poiret twills and twilloards.

Variety in style—boxy coats, swirl-backs, straight-lines, sports styles, capes, beltless coats, slash-coats. Short coats, long coats; short capes, long capes.

Variety in treatment—tailleurs, color-trimmed, beaded, embroidered, slashed, color-faced.

Variety in color—beyond enumerating!

**Twelve Wonderful, Wonderful Specials at \$25**  
 Tweeds. Sunshine colors. Coat styles. Cape styles. Dress and cape styles.

—Gimbels, Salons of Dress, Third floor.

## A Wonderful New Square Cape for Women —Is Specially Priced



**\$59.75**

And it's of Orlando! And if that doesn't make that \$59.75 price stand out like a miracle, nothing could!

Square. With square collar. Crepe de chine-lined. Black, navy blue, fallow.

Ready With "Reproductions"

—of "Patou," "Jenny," "Doucet," "Renee," "Worth," "Bernard," "Brandt," made of every fashion-fabric from tweeds and duffel-coatings to marvella and barbar crepe.

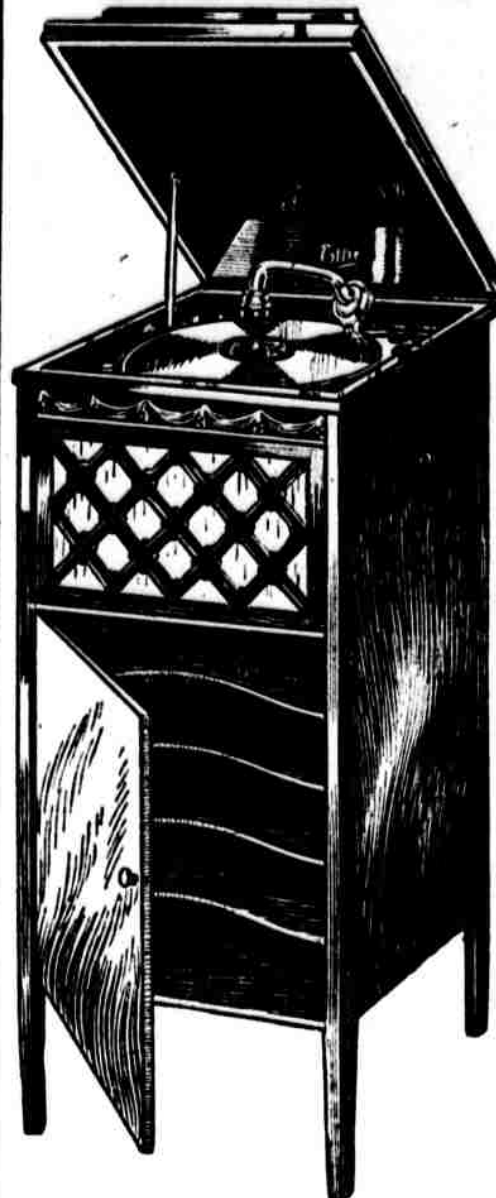
But priced \$65, \$79.75, \$89.75, \$97.50, \$125, \$135, \$150 and \$195—instead of the costly originals' prices.

**Special at \$29.25**

New-model Wrap of shaween bolivia; silk-lined; tassel-trimmed—fallow, periwinkle, hirondelle, navy, black.

—Gimbels, Salons of Dress, Third floor.

## Piano Store Open Tonight Till Nine



Evening Entrances: Ninth Street and Eighth and Market From Subway

## Pathe Phonographs At One-Third Price

This splendid model—cased in mahogany—

**\$38**

But all models are included.

**Prices Start at \$18**

**A Whole Year to Pay**

The whole retail stock of the Pathe Phonograph Shop, 1026 Chestnut street, was sold to us—

By Order of the Receivers

It is necessary to act promptly—come in the evening, if that is more convenient.

—Gimbels, Seventh floor.

## \$16,000 Worth of Unusually Fine Philippine Lingerie to Sell for \$12,000



Because the three great Gimbel Stores united purchasing power. Philadelphia's share was \$16,000 worth. Unusually fine—unusually elaborate—not a plain-scalloped nightgown or chemise in the entire lot!

Three groups:

At \$2—Value \$2.95

At \$2.95—Value \$3.95

At \$3.95—Value \$5

Nightgowns and envelope chemises in each price-group.

—Gimbels, Second floor.

## Men's SUITS to Order at \$35

Any man's taste can be suited—fabrics for spring and Easter wear.

Worsted, cassimeres, herringbones, checks—materials that go into \$50 to \$70 suits by other good tailors.

Our risk as to fit—your suit is made for YOU and is planned by your measurements.

Ready for Easter.

**\$35.** Many men are ordering two suits; many others order an extra pair of trousers.

—Gimbels, Second floor, Ninth street.

## Seasonal Clean-Up 1800 MEN'S SUITS and OVERCOATS

**Kuppenheimer Society Brand**

And Other Gimbel Lines

**\$25**

All are regular Gimbel stocks:

Single- and double-breasted Sports Suits:

Medium and heavy overcoats,

Most of the 1800 garments are the famously fine Kuppenheimer and Society Brand makes—the perfection of tailoring and material value in men's ready-to-wear clothes.

Materials, models and sizes for men of all builds.

**All Sold Regularly at \$45 to \$55 Final Clearance of These Lots at \$25**

—Gimbels, Second floor, Ninth Street.

## Subway Store: These are the Most Wonderful Children's Dresses \$1 Ever Bought!



They are the famous "Double Duty" Dresses—wear 'em twice as long before washing them.



They Have Never Sold Below \$2—Usually They Are \$2.95

And there are three thousand of them! Gingham, plain chambrays, crash, and drill. Beautiful colorings. And each has its ruler, pencil and tablet, in separate pockets to fit. All sizes 6 to 14.

—Gimbels, Subway Store.

## Altogether New Prices on House Furnishings

My, how the high war-time prices held on—no one person's fault. Conditions! But conditions have been changed.

Many Prices Are Cut in Half



From February 27th to March 11th for only **35c** and the Coupon



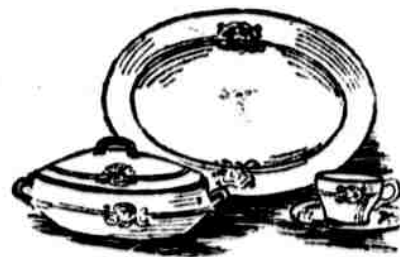
| Article   | Feb., 1921 Sale | Now     |
|---|-----------------|---------|
| Aluminum Cooking Utensils:  |                 |         |
| 4- and 6-qt. covered cook pots  | \$1.50          | 95c     |
| 1½-qt. double rice boilers 2-qt. size.  | \$1.50          | 95c     |
| 4-qt. tea kettles   | \$1.50          | 95c     |
| 4½-qt. size.  |                 |         |
| 4-qt. covered sauce pans  | \$1.50          | 95c     |
| 9-in. fry pans  | \$1.50          | 95c     |
| Steam cookers   | \$1.35          | 85c     |
| Three compartments; copper bottoms.   |                 |         |
| White enamel finished canister sets   | \$1.25          | 95c     |
| 4 pieces.   |                 |         |
| Galvanized Wash tubs  | 85c             | 58c     |
| Galvanized rotary ash sifters   | \$3.50          | \$2.95  |
| 3-burner gas cook stove   | \$14.75         | \$10.75 |
| With oven 14x16x22.   |                 |         |
| Alaska Star refrigerator  | \$31.50         | \$25.00 |
| White enamel lined—70 lbs. ice capacity.                                      |                 |         |
| Porcelain top pastry tables   | \$22.50         | \$9.40  |
| Size 25x40.   |                 |         |
| White enamel mirrors  | \$6.50          | \$4.95  |
| Bevel plate glass; choice of oval or oblong shape; size 16x20.                |                 |         |
| Cedar mops  | 78c             | 58c     |
| With adjustable handles—prepared with cedar oil; also 4-oz. bottle of polish. |                 |         |
| Table oilcloth  | 75c             | 45c     |
| First quality—1½ yds. wide.   |                 |         |
| Folding ironing boards on stand   | \$2.95          | \$1.95  |

## 300 Different Styles and Decorations in DINNER SERVICES

Saving 33½% to 45%

This china Sale brings the product of the finest potteries of Europe and gathers the finest made in America.

Special word today is of the dinner sets at medium prices. In particular these—



**51-Piece Dinner Sets \$8.95—Value \$13.95 up to \$22.50—Value \$35**

These are all from American potteries. Newest and best shapes and decorations—among the shapes are the "Belmar" and "Mayflower."

In particular—100- to 106-piece Dinner Sets, for twelve persons, in various border decorations, gold-band, best and newest shapes; regularly \$29.50 to \$35, special at

**\$19.50 to \$45**

**\$29.50 Dinner Sets at \$19.50**

The style is pictured—one of the most popular of our open-stock patterns. The decoration is a neat basket of flowers, and blue line. \$19.50—regularly \$29.50.

**31 and 38-Piece Breakfast Sets, Various at \$3.95—Value \$6.95 up to \$10.95—Value \$15**

Neat blue or maroon floral and gold band decorations, all at \$4.95 a set. The others in equally desirable choice.

In particular—51-piece Dinner Sets, full coin gold band, coin gold handles, open stock; for six persons; regularly \$19.50, special at

**\$11.95**

—Gimbels, Fourth floor.

## "Plums" in the Subway March China Sale

**31-Piece Breakfast Sets**

**\$3.95**

**50,000 Pieces of Odd Dinner-ware at a Fraction of Their Worth**

Neat decoration. Every piece to make up sets. Varies from 5c to 50c each.



**Regular Value \$6.95**

First quality. Complete as pictured.

**51-Piece Dinner Sets**

Neat rose and basket-of-flowers decoration; full gold-line finish. Regular price, \$15.

**At \$9.95**

—Gimbels, Subway Store.