

Auto Show Number 1922 Accessories - Trucks

MOTOR VEHICLES INCREASE FARM PRODUCTS' VALUE

States Using Most Cars and Trucks Lead in Crop Wealth. Iowa First in Rural Registration

INVESTMENT in motor transport and high-value products go hand in hand, according to a comparison of Government figures on crops and motor vehicle registration on farms.

Table with 2 columns: State, Value of farm products. Lists states like Ohio, Pennsylvania, Wisconsin, Indiana, Iowa, Illinois, Kansas, Minnesota, Nebraska, Missouri, Wisconsin, Michigan, California.

Table with 2 columns: State, No. of cars in farm. Lists states like Iowa, Illinois, Kansas, Minnesota, Nebraska, Missouri, Wisconsin, Michigan, California.

Table with 2 columns: State, Value of farm products. Lists states like Iowa, Illinois, Kansas, Minnesota, Nebraska, Missouri, Wisconsin, Michigan, California.

TRUCK MEASURES TO UNIT OF VALUE

Vehicles Not Only Used as Carriers of Commerce, but in Speeding Up Work PERFORMS MANY DUTIES

By F. H. WILLIAMS District Manager of the White Company DAY by day, since the beginning of 1921 until the last page on the calendar was torn off, December 31st, we have been going forward to a better business; until now, with calloused hands, firmer step and clearer vision, we have arrived in 1922 better prepared to meet and handle the problems of the future for the experience gained, and with better business insight.

During 1921 long strides have been made in eliminating waste and inefficient methods have been thrown to discard. Business men in all lines of industry have gone through a period of careful study and adjustment of their business in order that they might be better prepared to serve their patrons.

THREE CASE MOTORS

Triad of Continental Types Shown. With Smart Bodies The Case car is shown again this year as a six-cylinder car using three types of Continental motor, namely 7-R, 9-N and 6-T, and is built as a five-passenger touring, seven-passenger touring and a sedan.

PERMANENT AUTO CAMP

In anticipation of a big tourist movement through Chattanooga, Tenn., this fall and winter, the Chattanooga Automobile Club, in co-operation with the city park department, has established a permanent department camp in one of the city's most beautiful recreation centers.

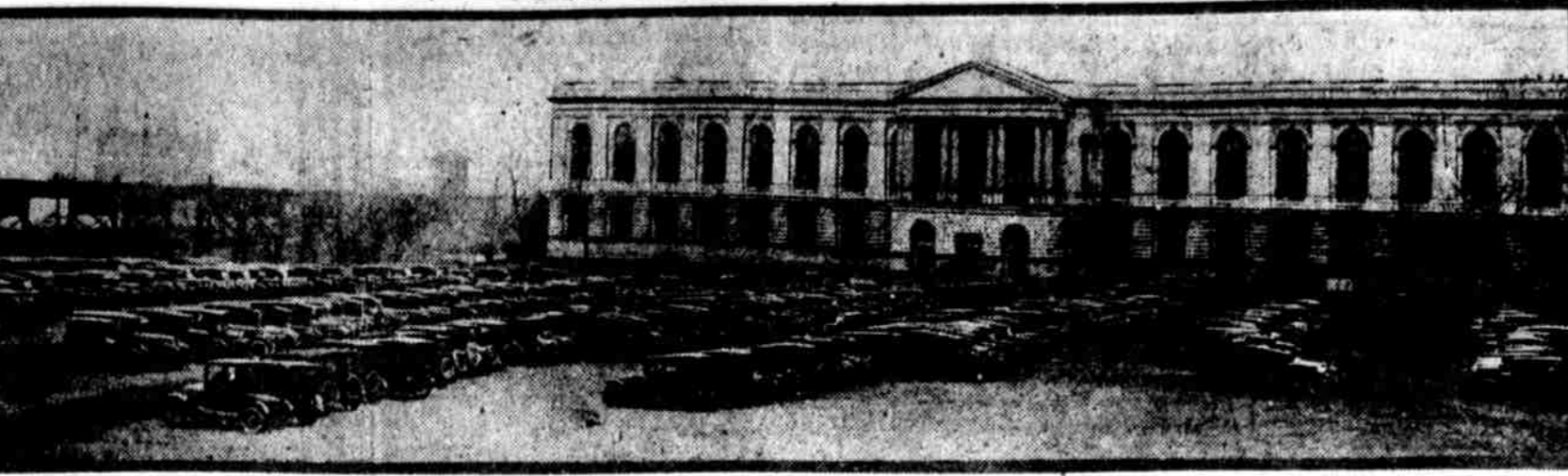
AUTO LENS

Violet Ray Lens (George W. Noek, 1304-06 Race St.) Flexo Lens (Flexo Lens Protector Co., Camden, N. J.)

SUPPLIES

New Era Garage, 3330-32 N. Broad St. Higgins Bros., 4084 Haverford Ave. J. A. DeWalter, 1608 Sunnyside St.

THE SHOW OUTSIDE THE SHOW



More than a million dollars is represented in automobiles inside the Commercial Museum, where the twenty-first annual exhibition is being held. It is estimated that an equal amount is represented in cars parked outside. The above picture shows the great wealth of visiting cars present.

FEW TIPS ABOUT BLOWOUT PATCHES

If Made Permanent They Are Very Likely to Ruin the Tires HAVE 'SHOES' INSPECTED

TRYING to make a blowout patch do the job of a permanent repair is a good way to ruin tires. The tire patch is a first-aid treatment to meet emergencies, but as soon after the blowout as possible it should be removed and a permanent repair made.

BUSSES ENABLE ROOTERS TO FOLLOW HOME CLUB

Automobiles Have Increased Crowds at Baseball Games and Have Contributed to Success of Twilight Tilts. Also Big Aid to Players

By BILL DALLAS INDEPENDENT baseball, meaning that brand of the national sport as furnished by the semi-pros and minor leagues in the Philadelphia territory, has grown in leaps and bounds the last few years, and according to Phil J. Hagerzy, manager of the Nativty Baseball team, the wonderful success of the sport is due in large measure to the motor-car.

LIGHT TRUCK PAYS ALL YEAR ROUND

Commercial Car Is Good Investment in Both Summer and Winter

AN INVESTMENT in a light delivery car or truck pays dividends all the year round," says C. H. Wells, local branch manager of the Chevrolet Motor Company.

TRACTOR IS NO LONGER A LUXURY ON FARMS

Performs All Kinds of Work and Eliminates Horse to Great Extent in Agricultural Duties—Used by Industrial Concerns

By JOSEPH T. LABRUM THE tractor is no longer a luxury on the farm. It is an absolute necessity. The farmer with a tractor can produce more than the agrarian without one.

Clean Up Snow "Do you know that last year the City of New York purchased 100 tractors to haul the plows over the snow-covered streets? Trucks could not make the job unless they had tractors to pull them.

Cuts Down Horse Work "Why, do you know," Mr. Heeb pointed his finger at us while his eyes flashed, "that the farm tractor eliminates 75 per cent of the horse work on a farm and that the newest tractor, which will shortly be placed on the market, does away with farm work altogether? Fact: Proved by those who have tried. The up-to-date farmer predicts that the saving in time and labor will work wonders in the future.

BATTERY TROUBLE DUE TO NEGLIGENCE Less Difficulty Will Follow if Owner Would Observe Few Instructions TESTS ARE IMPORTANT NEARLY all battery troubles are due to the owners' failure to observe a few simple instructions.

CLASSIFIED DIRECTORY REPAIRING AUTO SCHOOLS ELECTRICAL EQUIPMENT FORD ACCESSORIES GAS AND OILS MOTOR TRUCKS RADIATORS SUPPLIES SPRINGS AUTO INSURANCE AND LICENSES AUTO GLASS AUTO LENS AUTO TOPS, BODIES, PAINTING AND REFINISHING VEHICLE WASHERS CARBURETORS MISCELLANEOUS