



DOING SOME FANCY SKATING. Many stopped to watch Mr. and Mrs. Fitzwilliam Sargent at the Merion Golf Club pond



AN END MAN TAKES A FALL. Many Main Line folk were found on the ice at the Merion Golf Club. Seated on the ice is Evan Dunn. The others (left to right) are: Miss Louise Wilson, Richard Brown, Miss Jane Goodman, Caesar Lanarza and L. Matto



LONG WAY FROM HOME. Miss Elizabeth Sherburne, of Boston, on the ice at Merion Golf Club



REFUSED A MILLION DOLLARS. But Charles Garland, North Carver, Mass., left by his father, but will give it away. He will now take the \$1,000,000



CAN YOU RECALL THIS BIT OF OLD PHILADELPHIA?

JURING THE CONSTITUTIONAL CELEBRATION. The etching shows a view of the patriotic parade September 14, 1887. These three floats were placed in the parade by the Carpenter's Company. The second float had thirteen pillars, representing the thirteen original States, while the last float has thirty-eight pillars, the number of the States in the Union at that time. The arch was decorated with emblems of all the States. City Hall is shown in the background. Have you an old Philadelphia photograph? Send it to the EVENING PUBLIC LEDGER



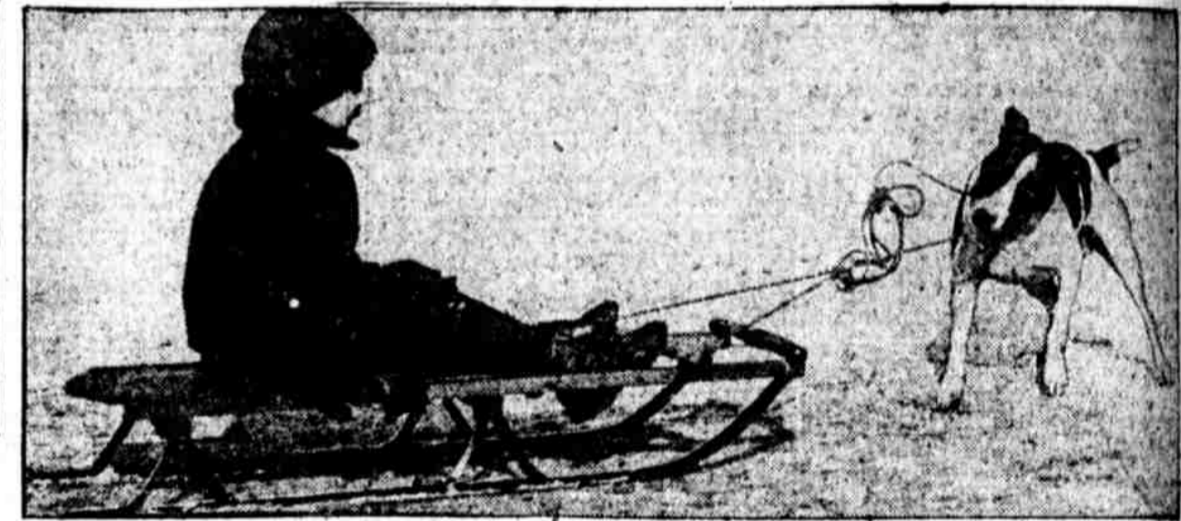
TAKING A PUBLIC SUBSCRIPTION. This is one of the many boxes seen throughout England, where contributions can be made to the public's wedding gift to Princess Mary



EDITH PLANK SHIRLEY. She gave a recitation at the meeting of the Music Branch of the Wildwood Civic Club



CARS ARRIVE. Automobiles displayed at Philadelphia's 1922 show arriving in vans from the New York show. Yesterday was a busy day at the Commercial Museum

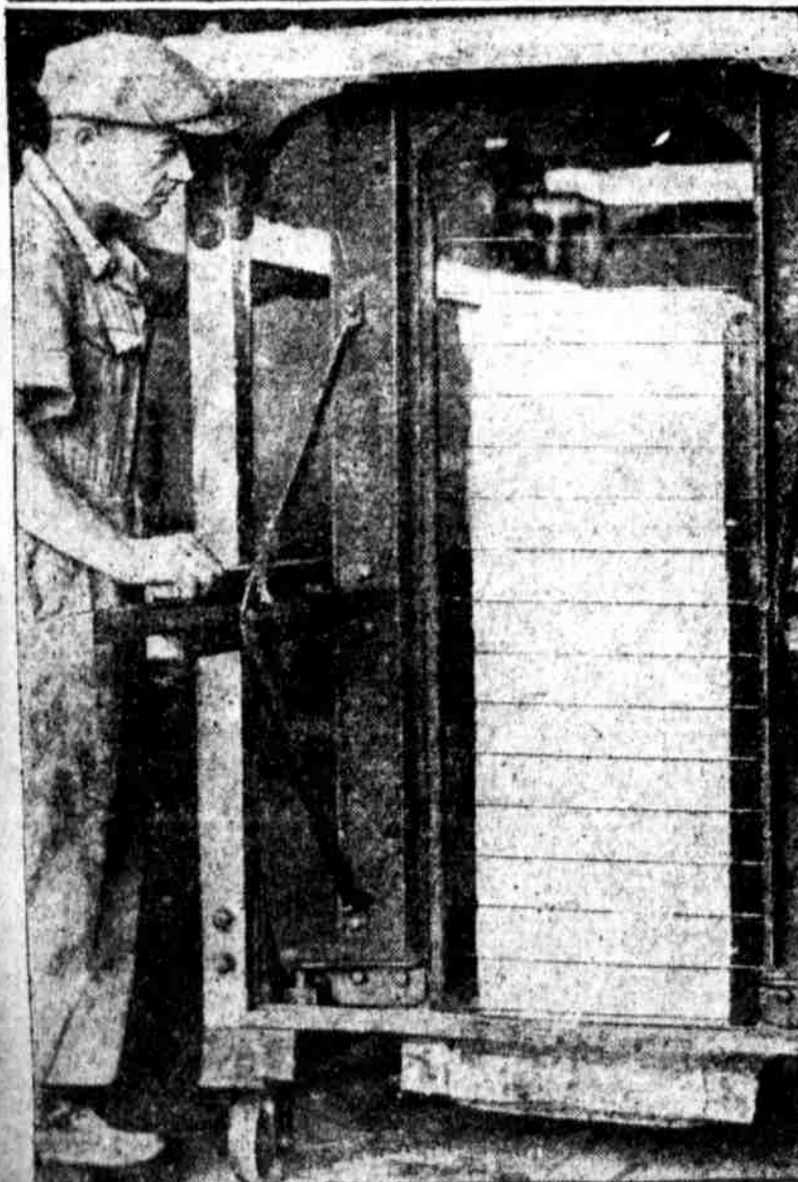


ONE-DOG POWER. The small dog didn't do much pulling until the sled was started by Leonard Sheppard, the owner and rider. They were found at the Kensington Recreation Center



IN PENN'S BASKETBALL TOURNEY. Dr. Matthew C. O'Brien, of Central High School, will depend on the ability of these two men Drummond (left) and Strunk. ROMAIN C. HASSRICK talks of Legal Aid Bureau in an Editorial Page interview

OUR CITY'S WORKERS AND WHAT THEY DO



CUTTING A 1300-POUND CAKE OF SOAP. The operator is Charles Bush, of 2009 West Thompson street. He is at work in the factory of Charles W. Young & Co., 1247 North Twenty-sixth street



JUST BEFORE SENATE VOTED. Senator Truman H. Newberry, of Michigan, holds his seat



Mlle. Suzanne Etienna, of Paris, secretary to M. Carterson, delegate to Arms Conference



A HELPING HAND. On Concourse Lake, Dorothy Strickler gives Emma Violek first skating lesson



WARREN S. HOUSTON and Miss Estelle T. Newman in play given by Penn's Zetosophic Society



ASSISTANT CASHIER. Charles B. Conn, of the Ninth National Bank, where he has been for twenty-two years. He is married and has two children

BUSY PHILADELPHIANS