

For Friday

Store Hours, 9 A. M. to 5:30 P. M.

Open a savings account. The Gimbel Bank allows interest on deposits up to the 10th of a month as though made on the first. —Chestnut-Street Annex.

GIMBEL BROTHERS
MARKET · CHESTNUT :: EIGHTH · NINTH

Gimbel Brothers Bank, quite apart from the affairs of the Store, is most convenient—hours help, too—open 9 to 5. —Chestnut-Street Annex.

Thursday, January 12, 1922

For Friday



10 Shoes at \$3.75

Women's \$10 *Queen Quality* Shoes at \$3.75
Walking Boots : Brogue Boots : High-Arch Boots Second Floor

Country-wide shoe selling falls off during the Christmas rush and the Thos. G. Plant Co., makers of Queen Quality Shoes, got an overplus of six thousand pairs. To hold them meant to upset their production plans, so the shoes came to us as quick outlet.

Loss? Yes. Every business must take some losses.

Finest Leathers : Newest Lasts : Latest Styles

So, this offering is just this: Newest \$10 Shoes of a wonderfully good make at \$3.75. Sizes 2½ to 8—AA to D. Mail orders filled.

A goodly number of pairs of—
Women's Oxfords and Strap Pumps at \$3.75—Half Price
Tan calf, patent colt, black calf, glace kid.

Women's Spats, 95c and \$1.45
Taupe, fawn, brown, ginger, gray, beaver and the new cloth that resembles woolen hose—much under half price.

Ample force of skilled salespeople to give exact and satisfying service.

—Gimbels, Second floor Shoe Section.

Geo. Updegraff & Sons, Foremost American Glove Makers, Choose Gimbels to Distribute Their Samples and Surplus of

Fine Gloves—About Half Price: Men's—Women's Children's

Proof the store that serves best draws the greatest tides of opportunity.

MEN'S GLOVES

Men's Suede and Mocha Gloves
Lined and unlined styles for dress and auto wear. Strap-wrist gloves and gauntlets.
At \$1.38—Values \$2 to \$3
At \$2.85—Values \$4 to \$6
At \$4.25—Values \$6 to \$10

Men's Fur Gloves and Gauntlets
Fleeced and lamb's-wool lined.
At \$3.50—Values \$5 to \$7.50
At \$8—Values \$12 to \$18

WOMEN'S GLOVES

Women's One-Clasp Cape and Suede, Lined and Interlined
Also Auto Gauntlets
At \$1.55—Values to \$2.50 and \$3.50
At \$3.15—Values to \$5.00 and \$7.50

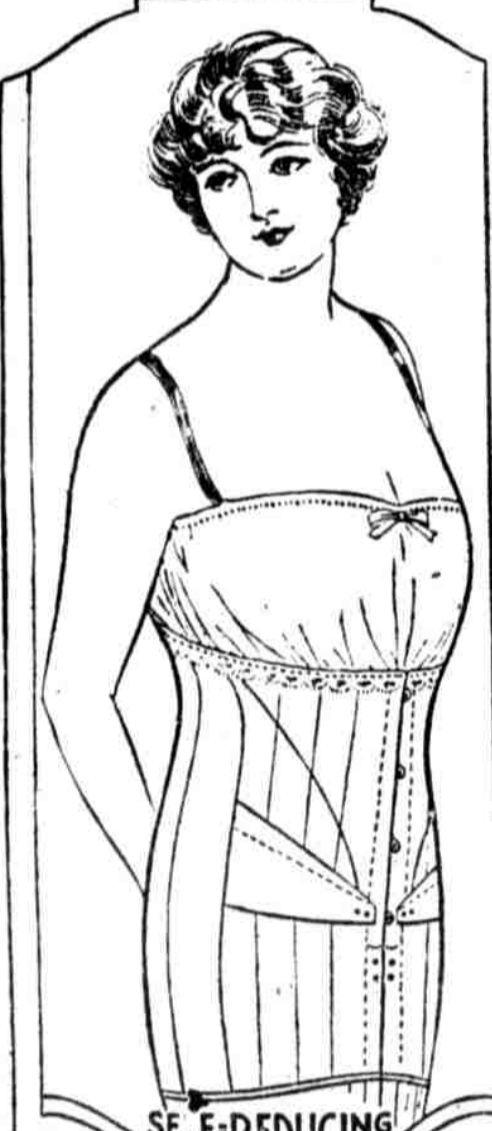
Women's Novelty Strap-wrist French-Kid Gloves
At \$2.45—Value \$6.50
White and colors; embroidered backs.

Women's Kid and Suede Gloves
At 95c—Values \$1.85 to \$3.50
Women's Strap-Wrist Washable Cape Gloves
At \$1.68—Value \$3.50
Beaver and gray.

BOYS' & GIRLS' GLOVES

At 68c—Value \$1.25
At \$1.25—Values \$2.00 and \$2.50
Fine cape gloves and gauntlets.

—Gimbels, Regular Section and Grand Aisle, First floor.



Nemo Self-Reducing Corsets: Nemo Circlets
—Money Saving Specials for the Woman of Full Figure

The woman of full figure need not pay more for correct corseting than her slender sister.

\$4 Nemo SELF-REDUCING CORSET

This new Nemo Self-Reducing Corset is now put on sale at a price away below the regular prices of Nemo Corsets; so they remain as they always have been within reach of every woman.

In quality, shape and durability No. 444 is in every respect equal to the best Nemo Self-Reducing Corset ever made. For over twenty-five years the merits of their scientific reducing and re-shaping features have been so much appreciated by stout women that they need no further comment.



\$1 CIRCLET MORE THAN A BRASSIERE

The Lowest Priced Circlet for Stout Women Ever Sold Before Was Priced \$1.50

This model at \$1 is self-adjusting and does for the stout woman above the waist what the Self-Reducing Corset does below. They should be worn together.

Gimbel Corset Experts to Advise and Fit You Correctly —Gimbels, Second floor.

Three Groups of Women's Handsome BEACON BLANKET ROBES REDUCED

Smart tailored styles. Satin-trimmed styles—gorgeous wide bands of satin! Styles with big, warm collars. And a collarless model—in extra sizes. All full, full cut! And gorgeous colorings.

At \$2.95—Were Special at \$3.95 At \$3.95—Were \$5.95
At \$5—Were \$6.95 and \$7.95

Regular and extra sizes in the \$5 group.

—Gimbels, Robe Shop, Second floor.



Tomorrow Sale—1653 Spring Dresses in the Subway Store

Sample lines and "overcuts" collected from over a dozen makers—all of whom are regular suppliers to Gimbels, all of whom make the superior-quality dresses that Gimbels require.

All Women's Regular Sizes
Plenty of Extra Sizes
Misses' Sizes Mostly 16s and 18s

All at One Price

\$14

But None Worth Less Than \$20 —Mostly Worth Up to \$39.75

Canton crepes, Roshanara crepes, plain Canton crepe combined with jacquard crepes, beaded Canton crepes, iridescent beaded Canton crepes, charmeuses with chenille tassels, and the famous "handkerchief drape." Tricotines with flat silk braid banded and interlaced. Canton crepes with interlaced crepe ribbons. Two styles in lace combined with crepe de chine. Canton crepes with contrast-color borders—black, for instance, with henna-color bodice, yoke top, sleeve borders, skirt hem.



Crepe de Chine \$14



Canton Crepe and Lace \$14



Poiret Twill \$14



Taffeta \$14



Canton Crepe Beaded All-Over \$14

Spring taffetas with ruffles
Nail-headed satin-face Crepe
Cut-steel beaded Crepe de Chine

Poiret twill coat dresses—beaded and embroidered, or silk braid trimmed.

Extra Space—Extra Salespeople—Plenty of Sample Dresses

Entire Subway Store Main Aisle

Given Over to a

Sale of Fur Coats at \$29

Value \$45

Because a big manufacturing furrier had too many—there's been no winter yet, or they'd have gone "flying"!

Brown and taupe coney fur.

Three-quarter length—so much "dressier" than sports lengths.

Smartly belted—but with detachable belt; coat can be worn either belted or in flared ripple effect.

All have enormous cape-shawl collars and bell-cuff sleeves.

All richly silk-lined.

All sizes. \$29.



—Gimbels, Subway Store.