

HERE ARE THE MEN WHO ARE CREATING THE BRIDGE



PLANS TO CELEBRATE THE START OF WORK ON THE BRIDGE WERE DECIDED AT THIS MEETING. Left to right, Thomas A. Barlow, Samuel S. Lewis, Auditor General of Pennsylvania; Richard Weglein, president of Council; City Solicitor Smyth, Thomas B. Smith, Joseph K. Costello, secretary to the commission; Robert Gawthrop, Fred Taylor Pusey, legal counsel; Ralph Modjeski, chief of the Board of Engineers; Charles A. Snyder, Treasurer of Pennsylvania; Edward A. Byrne, engineer, of New York; George S. Webster, Mayor Moore, Lawrence A. Ball, Charles E. Bacon, assistant secretary of commission; Theodore Boettger, Thomas J. Jeffries, Miss Alma Schoneau, stenographer; John F. Whitaker, assistant treasurer of commission; E. I. Edwards, treasurer; T. Albeus Adams, Frank Stevens, Frank Gallagher and Samuel Shay



GOVERNOR SPROUL, OF PENNSYLVANIA. Early in his administration he advocated a bridge at Philadelphia. He signed the last appropriation bill making State funds available for the work. He is chairman of the Joint Bridge Commission



MAYOR MOORE, ARDENT CHAMPION OF THE BRIDGE, who is seeing that Philadelphia does its full share toward making the project a success. He suggested today's celebration



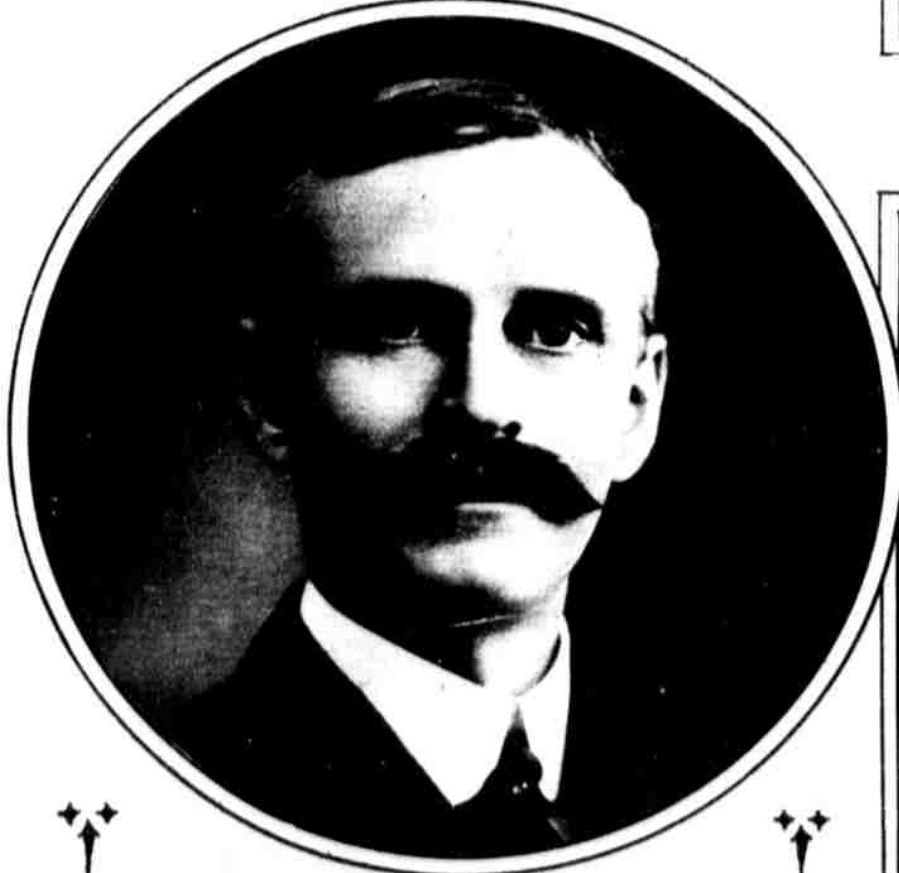
MAYOR ELLIS, OF CAMDEN, who has been at the forefront of the movement to join the two cities in the mighty span of steel. He looks forward to a big business boom when the work is complete



GOVERNOR EDWARDS, OF NEW JERSEY, an enthusiastic supporter of the bridge at all times. He appointed the New Jersey members of the commission. He will see that his State keeps abreast of Pennsylvania in the big task during his administration



RALPH MODJESKI, WORLD-FAMOUS BRIDGE BUILDER, maps out some vital points on construction with his fellow workers. Left to right, M. B. Case, principal construction engineer; Lawrence A. Ball, engineer; Mr. Modjeski, Joseph K. Costello, secretary; Clement E. Chase, principal assistant engineer; George S. Webster, engineer



REPRESENTATIVE DARROW, OF GERMANTOWN, worked energetically with Senator Edge in pushing the necessary legislation through Congress



PAUL CRET, ARCHITECT OF THE BRIDGE BOARD, ponders for a moment over an architectural problem while making the strokes which will soon be converted into steel and stone



UNITED STATES SENATOR EDGE, FORMER GOVERNOR OF NEW JERSEY, who helped to obtain State and national indorsement of the bridge. Co-operating with Representative Darrow, from Philadelphia, he obtained the War Department's consent to the plan