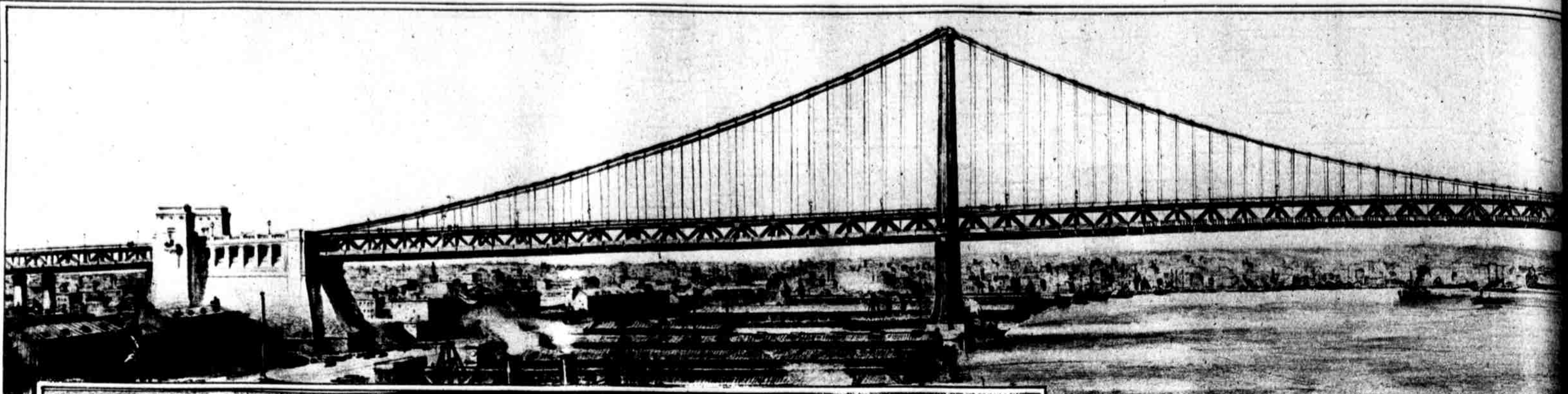


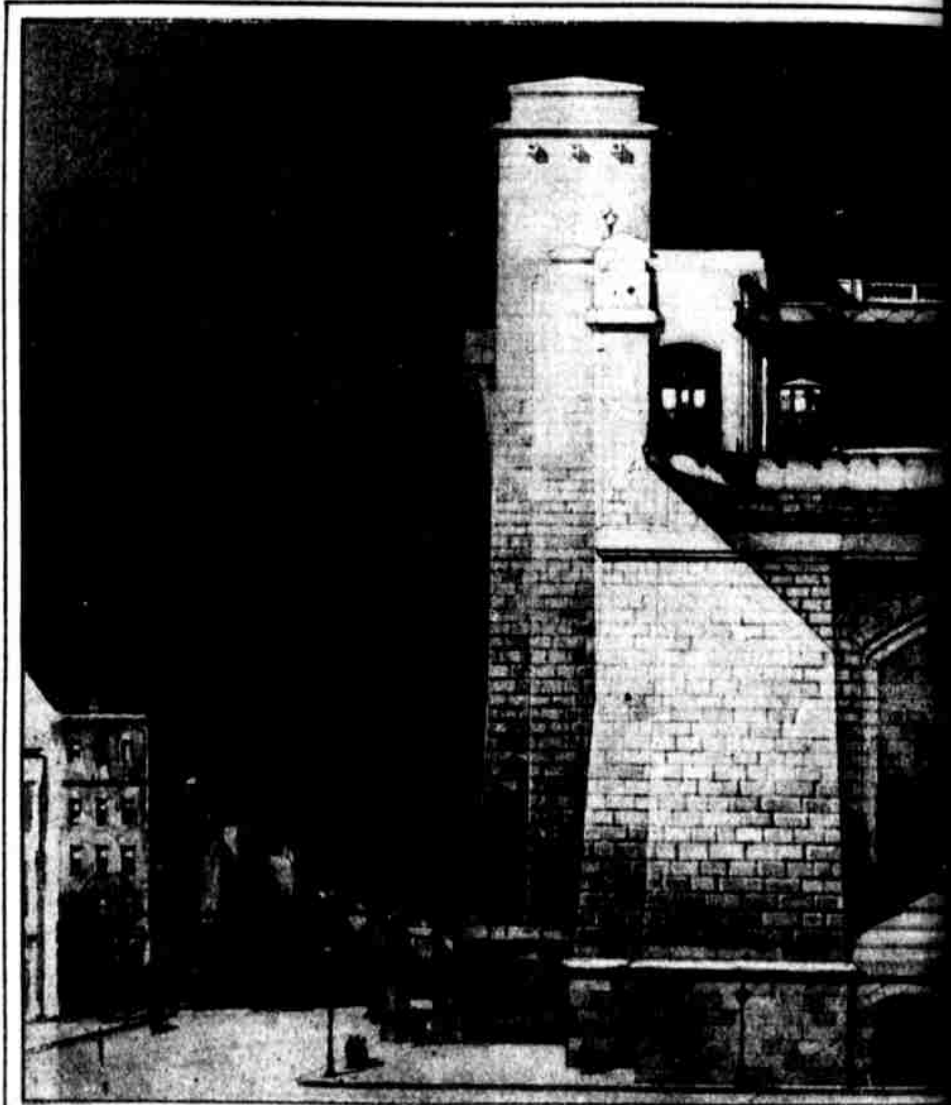
STORY IN PICTURES OF INTERSTATE SPAN, WHICH WILL



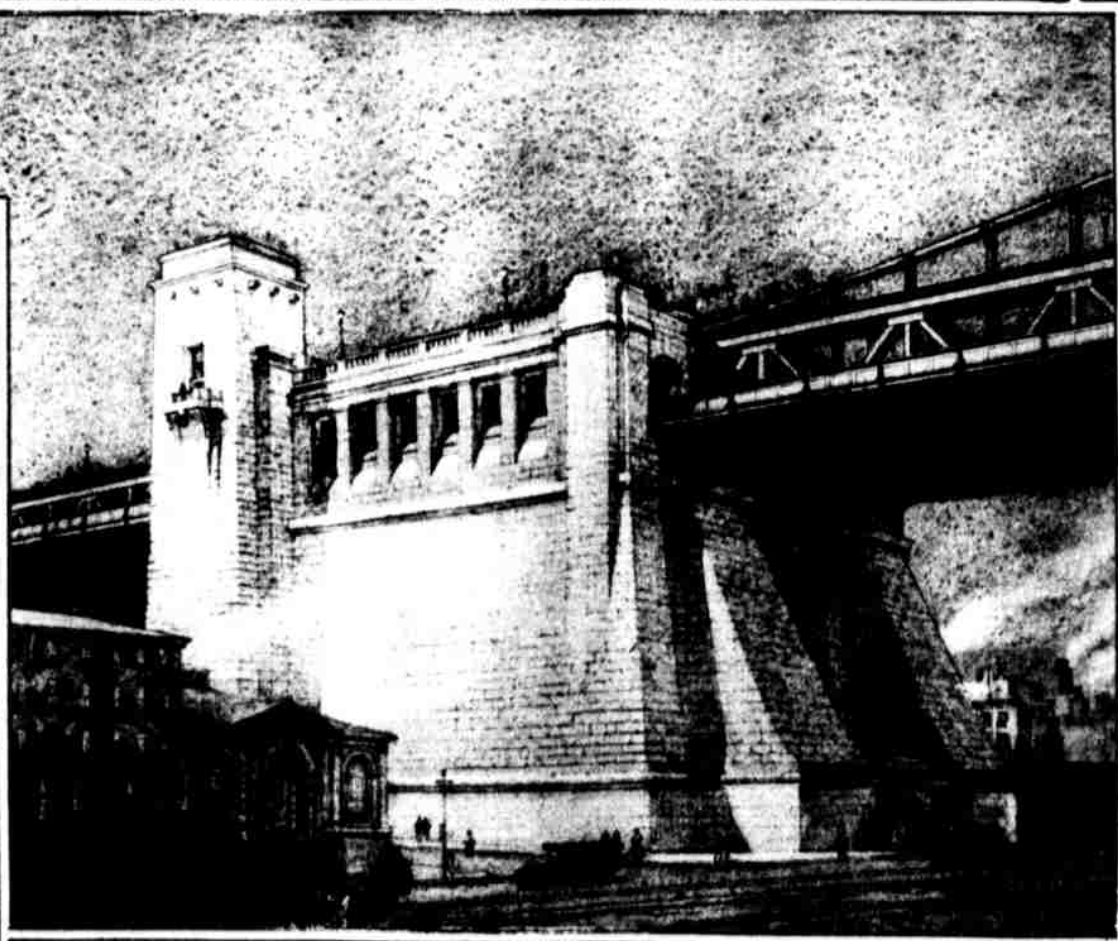
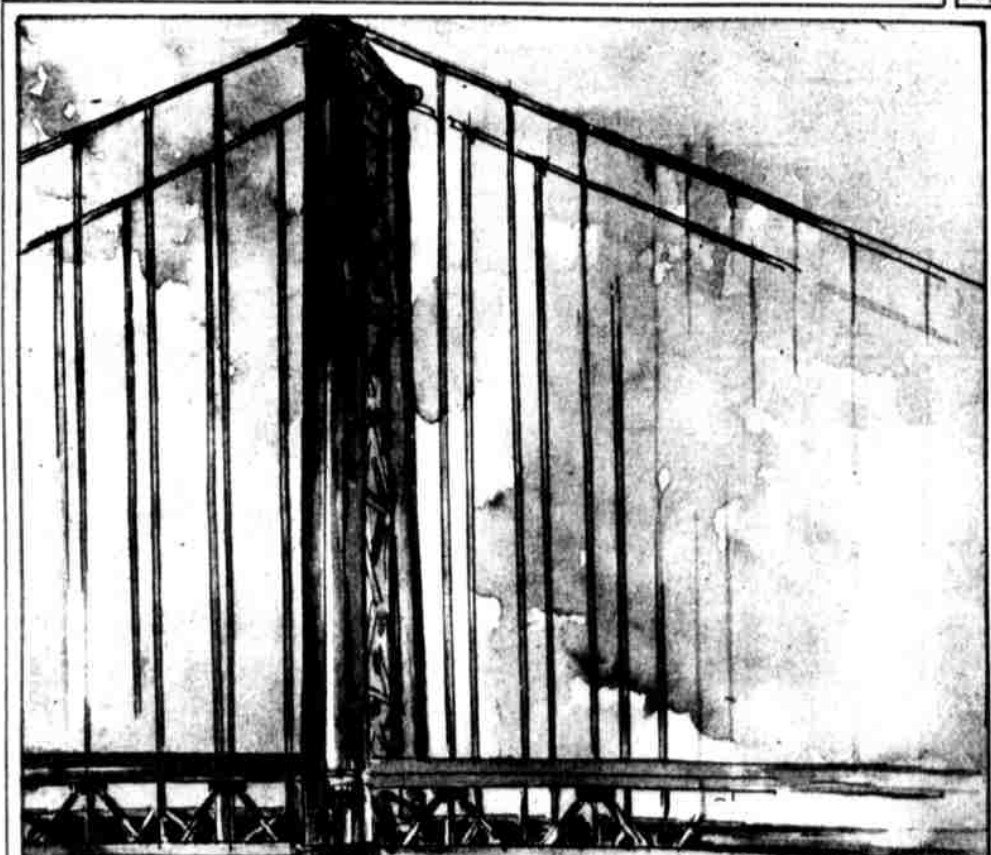
SHOWING THE IMMENSITY OF THE BRIDGE which will link two cities and two span suspension structure in the world. The main span will be 1750 feet. It will be high-water line to the top of this sturdy steel structure will be approximately



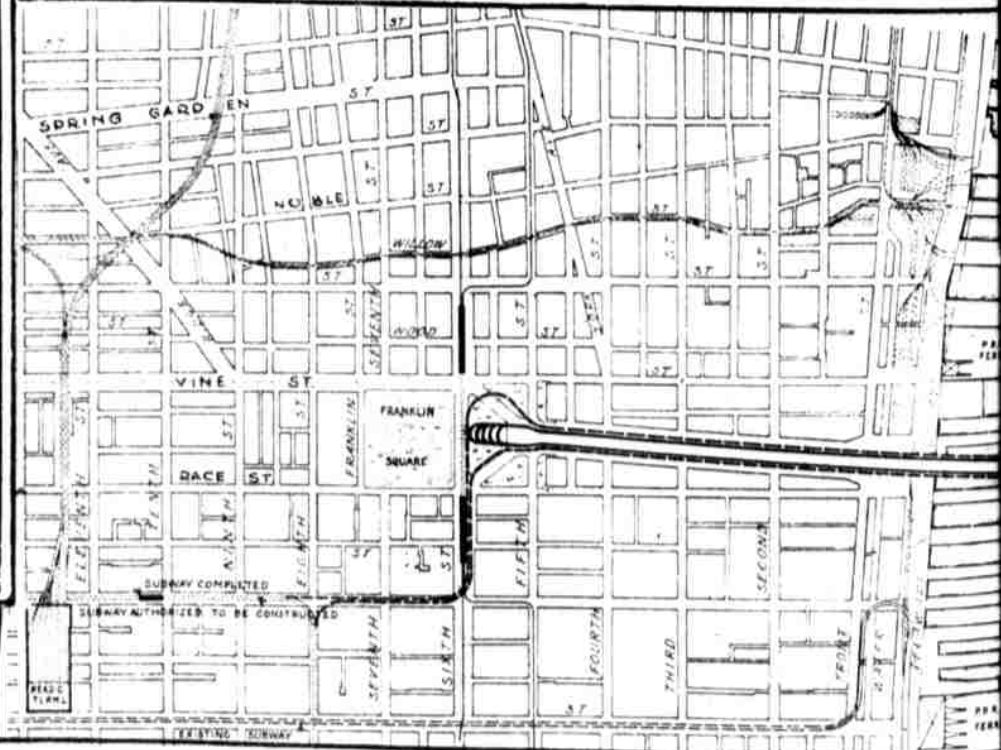
BEAUTY COMBINED WITH CONVENIENCE IS APPARENT IN THE PHILADELPHIA APPROACH. The engineers made a flying start when they selected Franklin Square as the site. The picture shows the square, the inspiring plaza to be built at Sixth and Summer streets, and a future view of the neighborhood.



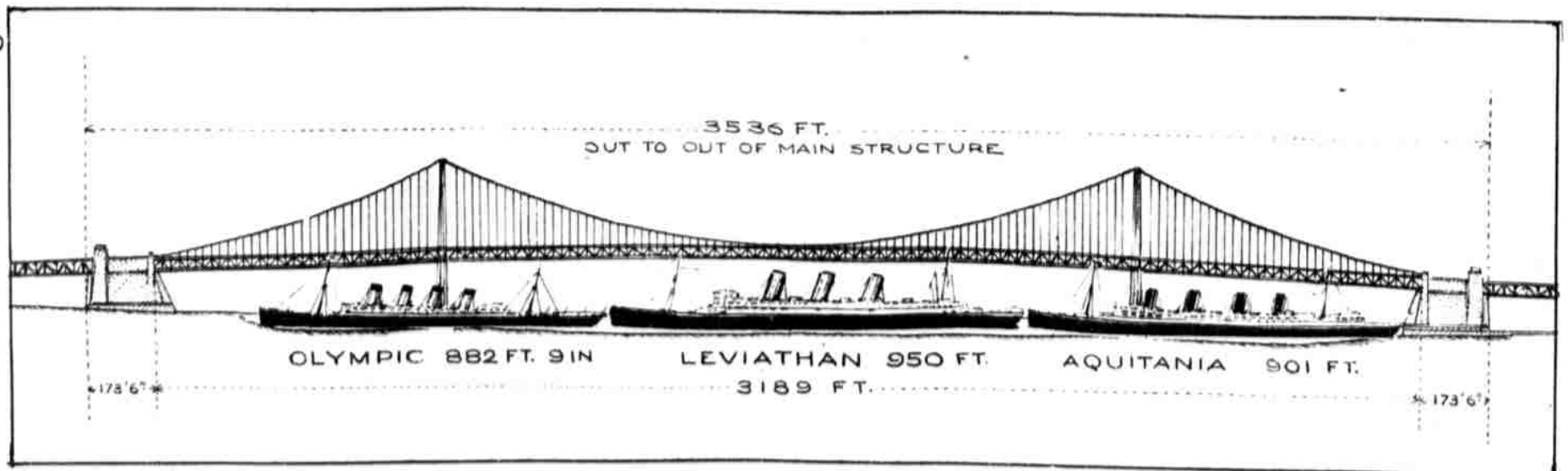
INSTEAD OF CONSTRUCTION ORNAMENTATION, THE BRIDGE ARCHITECTURE is a photograph of the end elevation of the anchorage, showing its general massing in Delaware



NOT UNLIKE AN ANCIENT FORTRESS WILL BE THE MASSIVE ANCHORAGE AT RACE STREET AND DELAWARE AVENUE. It is heavily buttressed to bear the pull of the great cables, and is designed to stand the wear of ages. Elevators will be built in the anchorages on both sides of the Delaware to carry persons to the bridge from the river front district



MANY PHILADELPHIA BUILDINGS COULD NESTLE COMFORTABLY UNDER THE SPREADING WINGS OF THE BRIDGE. The picture shows a comparison in height of Independence Hall (135 feet) and the Girard Trust Building (100 feet) with the roadway of the bridge. The roadway is 135 feet above the mean high-water line



THREE OF THE WORLD'S LARGEST OCEAN LINERS MAY BE PLACED END TO END UNDER THE BRIDGE and there will still be 456 feet to spare. The accompanying illustration shows the Olympic, 882 feet 9 inches; Leviathan, 950 feet, and Aquitania, 901 feet, lined up under the structure. They make a total length of 2733 feet 9 inches. The three spans of the bridge to the anchorages total 3189 feet

IT'S A LONG TRAIL TO THE OTHER LOCALITIES TRAVEL PROCHES. TO THE HEIGHT REQUIRED TO PENETRATE DESIGNATED IN THE BEGINNING OF PHILADELPHIA TO DEN IS 9600 FEET TENTH