

NO WESTERN TRIP FOR RED AND BLUE NINE

Thirty-two Games Listed, Including Straw-Hat Day Game With Naval Academy—Change in Commencement Date Forces Dropping of Game With Michigan

THE University of Pennsylvania baseball team will not make a trip West next season, according to Acting Graduate Manager Bushnell in issuing the schedule of the Red and Blue this morning.

Thirty-two games, the largest number in many years appear on the schedule. Eighteen of the contests are to be played at home and the remainder on foreign soil.

Several weeks ago it was stated that the Penn team would make an excursion into the West to meet Michigan and several other Western colleges that have been seeking games in the schedule for many years. Negotiations had virtually been closed with Michigan, but a sudden change in the date of commencement week by the Westerners caused the plans to be called off entirely.

Commencement was moved up a week by the Michigan authorities, and as Penn had dates with Washington College, Colgate and Cornell during that week the promised trip was called off.

Urbans, Stevens, Muhlenberg, Lehigh and several other colleges after an absence of years reappear on the schedule. Two games will be played this year with the University of Vermont, one here in April and the other in Burlington in May. Columbia is scheduled for two games, one at home and the other away.

The Naval Academy nine will appear on Franklin Field for the first time in history on Straw Hat day, the first Saturday in May. For years Penn has made unsuccessful

efforts to bring the Middies here and finally succeeded this year.

Only one game will be played with Princeton this year, which is a big change over previous schedules. The Tigers always appearing for a home and away game. On April 22 the Princetonians will display their wares on Franklin Field, Yale and Harvard will be met again, both away from Franklin Field.

One Home Date in June

Of the eight games to be played in June only one is listed for Franklin Field, that with Jeff Tesreau's Dartmouth nine on Alumni Day.

The complete schedule follows:

April 1, Fordham at Franklin Field; 4, Urbans at Franklin Field; 6, Bowdoin at Franklin Field; 8, Dartmouth at Franklin Field; 11, Vermont at Franklin Field; 13, Stevens at Franklin Field; 15, Columbia at Franklin Field; 19, Brown at Franklin Field; 22, Princeton at Franklin Field; 25, Muhlenberg at Franklin Field; 27, Penn. at Yale at New Haven.

May 2, Swarthmore at Swarthmore; 4, Lehigh at Franklin Field; 6, Navy at Franklin Field; 10, Lafayette at Franklin Field; 12, Vermont at Burlington, Vt.; 13, Dartmouth at Hanover, N. H.; 15, Swarthmore at Franklin Field; 17, Columbia at Franklin Field; 20, Georgetown at Franklin Field; 24, Army at West Point; 27, Rutgers at New Brunswick, N. J.; 30, Cornell at Franklin Field.

June 2, Brown at Providence, R. I.; 3, Harvard at Cambridge, Mass.; 7, Columbia at New York; 9, Lafayette at Easton; 10, Dartmouth at Franklin Field; 13, Washington at Chestertown, Md.; 16, Colgate at Hamilton, N. Y.; 17, Cornell at Ithaca, N. Y.

Where Penn will play its home games after the 1st of May is causing no end of excitement to the coach of the team and the members of the Baseball Committee. According to present plans,

the new stadium work will start immediately after the relay games, which occur on the last Friday and Saturday of April.

The problem of selecting a freshman coach will not be decided on until the next meeting of the council. Danny McNichol, who is now coaching the freshmen basketball team, may secure the post.

Football during the 1920 season made \$114,313.06, according to the 1920-21 financial statement issued by the treasurer of the Athletic Association. This is by far the greatest sum ever made at Pennsylvania for football, but it is said that the last season will exceed the 1920 total by more than \$15,000.

The entire receipts for the period were \$311,207.71, and the expenditures \$286,313.79, which gives a net profit for the athletic year of \$22,737.42.

Basketball Pays

Basketball had its biggest year financially during 1920-21, the net profit from the court sport being \$1042.59. The entire receipts amounted to \$25,507.58. This mark, too, may be eclipsed during this season as a result of the increased seating capacity of Weightman Hall.

Baseball lost \$7091.74, rowing \$21,784.98, and the track team, which is combined with the relays, lost \$6983.04. The relays realized a handsome profit, but the enormous amount it takes for track made the above loss.

BULLDOGS BEAT SENATORS

Score 28-14 Victory With Assistance of Laird and Killinger

Washington, Dec. 19.—The Canton Bulldogs took the measure of Tim Jordan's Washington Senators at American League Park for the second time yesterday, outgunning the count in the last period, and scoring two touchdowns quickly for a 28-14 victory. Glenn Killinger, All-American back at Penn State this season, played for the winners.

Jim Laird, fullback of the Philadelphia Quakers, played a star game for Canton, scoring two of the four touchdowns.

TWO BIG GAMES FOR GIRARD FIVE

Collegians to Play Scholastic League Contests With Southern and Northeast

DEBUT IN THE CIRCUIT

GIRARD COLLEGE will break into the scholastic basketball limelight when it plays two interscholastic League teams during the holidays. This Friday the team will play Southern High and the following Friday Northern High will be met.

The game Friday should prove one of the best scheduled this year. The Collegians always present a strong lineup, and as Southern High has yet to be defeated it should be a hard-fought battle.

Southern High is confident of winning, but it looks like a toss up. Girard, while it has not yet played any games, is favored by many followers of the scholastic team to cop the decision.

Girard has seven games scheduled with Philadelphia quintets. West Philadelphia, Central, Southern, Northeast and St. Joseph's Prep are included in this list, while Wenonah and George School also will be played.

This afternoon at West Catholic High School, an important meeting of the Catholic Schools' League will be held. Final arrangements will be made for the opening of the circuit's basketball season.

The League originally was planned to be opened January 10. However, now that Salesianum High School, of Wilmington, Del., has entered a team, the date has been changed to December 28. On that day Catholic High will meet

Salesianum at Wilmington. Several teams have yet to arrange their dates, and a new schedule will be drawn up this afternoon at the meeting.

Brother Bodie, director of athletics at West Catholic, made the announcement that the football captain for the 1922 season will be elected this afternoon. He also stated West Catholic would open its season tomorrow with the Philadelphia Normal School. The game will be played at the Knights of Columbus Hall, Thirty-eighth and Market streets.

Ice hockey, soccer and tennis will be added to the list of sports at St. Joseph's Prep. School. This was decided at a meeting of the Athletic Association. Letters also were awarded to the members of the football team at the meeting. Gold footballs were given members of the team at a recent banquet.

Should St. Joseph's really go in for ice hockey, the interscholastic League, which now has only three members, would be enlarged. Also, with St. Joseph's showing the way, ice hockey may be taken up by other Catholic schools in this city. Eventually, a Catholic ice hockey league may be formed.

Lancaster High will entertain West Catholic High during the holidays. This will be one of the biggest boosts scholastic sports has received this season. The game will attract much attention, and will be a great help in the future.

LAI OUTSCORES HAGGERTY

Centre of Chinese Quintet Outplays the Giant George

New York, Dec. 19.—The All-Chinese Collegians, of Philadelphia, put up a very creditable contest against the Original Celtics yesterday afternoon in Madison Square Garden, but the polished teamwork of the Celtics and unacquaintance with the professional rules of the Chinese, outplayed the giant George Haggerty, as well as outscoring him. Leonard and Barry played a flashy backcourt game for the Celtics.

Lai, a member of the Bridgeport Eastern League baseball club for the last two seasons, did the best work for the Chinese, arriving the giant George Haggerty, as well as outscoring him. Leonard and Barry played a flashy backcourt game for the Celtics.

DUNDEE AND HANLON AT OLYMPIA TONIGHT

Werner and Gibbons Meet in Return Match in Semi

Johnny Dundee, with the experience of 500 ring battles under his belt, and Jimmy Hanlon, Denver lightweight with the steel jaw, arrived here last night primed for their eight-round bout at the Olympia tonight.

Dundee was optimistic about scoring

a victory over his harder hitting opponent. He said he put in a busy week of training and expects to show followers of the punch that ring science can triumph over ruggedness and hitting ability by beating Hanlon.

The semi-final of eight rounds will be a return match between George Werner, of Boston, and Jimmy Gibbons, of this city.

Jimmy Kirk and Willie Ferguson will clash in the third six-round. Pairings for the early bouts are: Joe Miller vs. Pedro Campo, and Billy Pimpus vs. Ray Belmont.

SHANAHAN CAGE FIVE SEEKS CITY HONORS

West Phila. Basketeers Have One of City's Fastest Quintets

The Shanahan Catholic Club is out to annex the independent basketball cham-

ampionship of Philadelphia and is well on its way to accomplish the same. It has been a long while since West Philadelphia has had a first-class team, but the Shanahan boys promise to fulfill that obligation.

With Jim Bonner, who managed the championship baseball club, at the helm the cage players are hanging up a few records in turning back the foremost independent quintets that invade West Philly. Aquinas was the latest victim and Shanahan simply smothered St. Smith's five in the last game.

On Wednesday evening Kayou's Catholic Club, another claimant of the city title, plays Shanahan at the Cavalry Armory, Thirty-second street and Lancaster avenue, and a hard game is expected. Danny McNichol, the former Penn captain, who is with Shanahan, is enjoying the same success with Bonner's team as he did in the Intercollegiate League.

OTHER SPORTS ON PAGES 20-24

OPEN EVENINGS

Curry's for Gifts

Will Solve the Problem "What Shall I Give This Christmas?"

Ladies' Hand Bags	Wallets, Brief Cases, etc.	Boudoir Lamps
Vanity Cases	Eversharp Pencils	Cameras for Children and
Fitted Overnight Bags	Fountain Pens	Grownups
Fitted Suitcases	Desk Sets	Photo Albums
Travel Bags	Desk Calendars	Camera Cases
Travel Slippers	Calendars	Camera Accessories
Jewel Boxes	Fine Stationery	An Enlargement From Your
Collar Boxes	Address Books, etc.	Favorite Print Framed
Travel Toilet Sets	Book Ends	to Order
Manicure Sets	Incense Burners	Framed Motives
Cigar and Cigarette Cases	Candlesticks	Framed Pictures

From \$1.00 to \$100

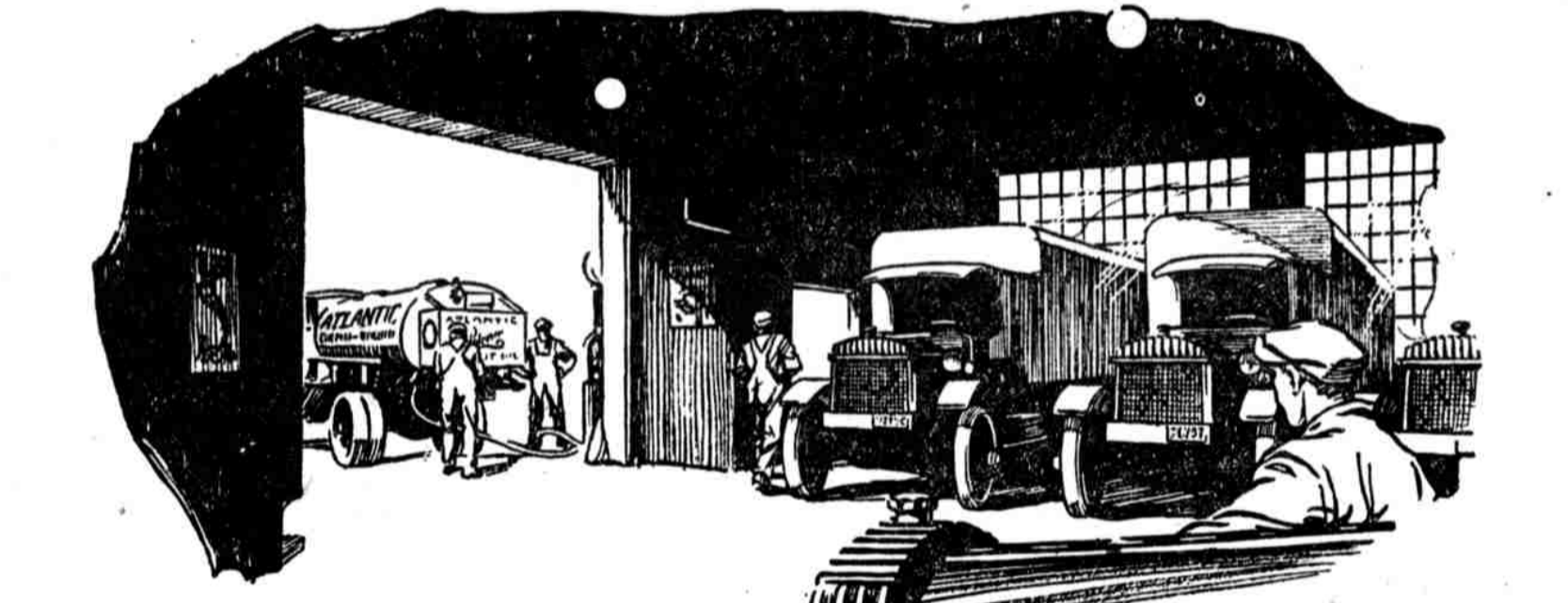
Xmas Greeting Cards

Illustrated Booklet Mailed Upon Request

Philadelphia's Popular Gift Shop

F. J. CURRY

812 Chestnut St. 812



Why large TRUCK-FLEET OPERATORS contract for yearly supplies of ATLANTIC GASOLINE

Each year it is becoming more and more literally true that "the business of a large city moves on gasoline". What if the supply should fail or run short? Suppose deliveries could not be obtained—even for a day?

It is the visions of the delays and losses which would be entailed, of the prestige which would be impaired in such event, that prompt far-sighted truck-fleet owners to take measures to assure themselves supplies of gasoline adequate for at least a year's needs.

In doing this it is but natural to seek the most reliable source of supply. The great majority of such concerns in the State contract with The Atlantic Refining Company for deliveries throughout the year.

They know Atlantic—the organization, the product and the SERVICE. They know this Company's responsibility and facilities. They know that the Atlantic crude-oil sources are vast and directly connected with the Atlantic refineries by pipe, tank-steamship and tank-car lines.

They know that the Atlantic refining facilities are among the largest and most modern in the world; that Atlantic gasoline is unexcelled in quality, and that it is always uniform.

They know that the Atlantic distributing system is the most highly organized and efficient they can possibly command—that prompt deliveries and considerate service can be depended on absolutely.

They are good leaders to follow!

ATLANTIC GASOLINE Puts Pep in Your Motor

PERMANENT XMAS WREATHS

THIS STYLE 14-INCH \$1

THIS STYLE 6-INCH 39c

10-INCH 59c

SPECIAL
Solid red with beautiful ribbon and green floral decorations. Will be just as serviceable next year. Name to Dealer. No Mail Orders. POSITIVELY WORTH DOUBLE

W. T. GRANT CO. 920 Market St. Next to Postoffice



A New Service—SUPPLEE ICE CREAM

For All Social Affairs

SUPPLEE ICE CREAM announces a new plan of great advantage to purchasers of ice cream for social affairs.

This arrangement will make ordering convenient, price most reasonable and delivery prompt.

There is a SUPPLEE DEALER in your neighborhood. Look for the sign with big "S." If you want six quarts or more, go to your dealer, who will receive your order and forward it to our ice cream plant at once, where it will have quick attention, and delivery will be made direct to you. The order must be given the day before delivery is to be made.

Your dealer gets credit for the order just as though he had delivered the ice cream to you.

Folks familiar with the "better flavor" of SUPPLEE ICE CREAM will welcome this plan heartily.

You will want SUPPLEE ICE CREAM for parties, dances, banquets, church, club or lodge affairs. And when you do, remember there's a SUPPLEE DEALER close by.

GOLD MEDAL MILK

SUPPLEE ICE CREAM
"Has a better flavor"

SUPPLEE ICE CREAM

One of the SUPPLEE-WILLS-JONES Products
PHILADELPHIA