

BETTER-CITIZEN DAY IS NEXT SUNDAY

Philadelphia Sunday School Association Making Plans for Record Attendance

PLEDGE CARDS USED

Clergymen and Sunday school workers are looking to next Sunday, "Better Citizen Day," to fulfill their belief in the influence of the Sunday school in creating better citizens.

Plans to attract double attendance in the Sunday schools, so as to bring it to the half million mark, are being carried out.

For several days officers of the Philadelphia Sunday School Association, aided by a proclamation issued by Mayor Moore, have been preparing for the day.

Pledge cards, promising attendance at Sunday school, programs and plans for stimulating Sunday school activities, and for carrying out school services, and personal work have been used in piling up momentum for the occasion.

The Second United Brethren in Christ Sunday school, Fifty-ninth and Catharine streets, has sent out 1000 pledge cards, and 1000 invitations to a special meeting next Sunday at which W. C. Lantieri, State secretary of the Sunday School Association, will speak.

There are numerous other churches which have made up their programs more than a week ahead of time for the day which is expected measurably to forward the work of Sunday religious instruction in Philadelphia.

Gold and Silver Hemstitching. Plating and Buttons covered. Hemstitching done while you wait. Prompt attention to mail orders.

Skin Troubles Soothed With Cuticura. Soap, Ointment, Talcum. See everywhere. Sample free of Cuticura Laboratories, Dept. 3, Malden, Mass.

Custom-made winter suits \$55 to \$75. From the Jones shop—winter suits of distinction. Made by tailors who know how—from the finest domestic and foreign suitings.

\$55 to \$75 Custom-made winter overcoats. \$60 to \$80 W. S. JONES, Inc. Custom Tailoring 1116 Walnut Street

Stop that pain! QUICK, warming, soothing, comforting relief follows an application of Sloan's Liniment. Just slip it on the strained, overworked muscle. Good for rheumatism, too. Penetrates without rubbing. Keep it handy.

Sloan's Liniment. QUICK, warming, soothing, comforting relief follows an application of Sloan's Liniment. Just slip it on the strained, overworked muscle. Good for rheumatism, too. Penetrates without rubbing. Keep it handy.



Quality Specials. Shoulders of Lamb 20c Per lb. Thick End of Rib 18c Per lb. Legs of Lamb 32c Per lb. Lamb and Round Steak 25c Per lb. Bradley's Market and 21st Streets

Store Hours, Monday, 9:00 to 5:30. Tickets for Thanksgiving Football—Cornell-Penn Game—on Sale at Gimbel's. Reserved Seats, \$3.

GIMBEL BROTHERS MARKET CHESTNUT 11 EIGHTH NINTH

Monday, November 21, 1921. The aims of stores are various—the Gimbel plan is to develop tremendous volume through selling at winning prices.

Your November Bill Need Not Be Paid Till January

The Gimbel Toy Store is so far ahead of last year's that we call it "Treasure Island"

Selling probably as many toys as two or three other stores combined, the Gimbel preparations are on a great scale.

And the price level can be much the lowest.

Suppose you have five dollars to spend for playthings—or a hundred—or a thousand—the idea of every good shopper is to get the best returns for the money.

Dolly is no better because you carelessly pay \$1.50 instead of a dollar—yes, for the same make and size doll.

And then there are twice as many interesting things to see at Gimbel's. —Fourth Floor

A Very Remarkable Two-Day Sale of Fashionable Gloves Thousands of Pairs Averaging Less Than Half Price



Every merchandising advantage this Store can achieve is for the customers of the Store—we are what banking men would call your "brokers"—your agents. We brought many of these gloves from Europe under the advantage of low rates on foreign money.

- GLOVES FOR WOMEN. Women's Imported French Glove, \$1.05. Women's Cape Strap and Tab Wrist Gloves, \$2.15. Women's Imported Kid Two-Clasp Gloves, \$1.48. Women's 16-Button Length Imported Glove, \$2.65. Women's One-Clasp Gray Mocha Gloves, \$1.48. Women's One-Clasp Suede Gloves, \$1.45. Women's 8-Button Length Suede Gloves, \$2.78.

- GLOVES FOR MEN. Men's One-Clasp Tan Cape Gloves, \$1.18. Men's Leather Fleece-Lined Auto Gauntlets, \$1.88. Men's One-Clasp Gray Mocha Gloves, \$2.25. Men's One-Clasp Fleece-Lined Cape Gloves, \$1.25. GLOVES FOR BOYS AND GIRLS. Boys' and Girls' Fleece-Lined Cape Gauntlets, 68c. Boys' and Girls' Fleece-Lined Kid Gloves, \$1.15. Boys' and Girls' One-Clasp Cape Gloves, 78c. Boys' and Girls' Fleece-Lined Suede Gloves, \$1.15.

ART NOTICE EXTRAORDINARY

Gimbel's have bought out the very beautiful collection of rare paintings—including many examples of the Barbizon School—of Mr. Herbert D. Allman, Philadelphia.

These paintings represent a collection most lovingly made—and for Art's sake only—by a master art-critic, who for more than twenty two years, has made pictures his main theme.

Not one of these pictures has ever been offered for sale by Mr. Allman.

They will go on sale—together with other important paintings from other private collections—Monday, November, 28th.

They may be seen in advance, and studied, the previous Friday and Saturday—November 25th and 26th—in the special Art Galleries. —Gimbel's, Seventh floor.

750 Women's Coats and Wraps



—in a Specially Prepared Pre-Thanksgiving Sale—at

\$49

Pay at Least \$65 Elsewhere if you can equal them at \$65! Strong statement? We've seen the coats!

- Fabrics and Colors: Fine wool bolivias, Black, Brown, Deer, Navy. Collars: Scotch mole fur, Taupe-dyed nutria, Australian opossum, Skunk-dyed opossum. Lined throughout with solid-color peau de Chine. Warmly, snugly interlined. And Every coat is hand-tailored! —Gimbel's, Salons of Dress, Third floor.

This IS a Dress Sale!

Not only because the Price is

\$29

—the Values \$39.75 to \$75 Not only because there are all sizes—Both Women's and Misses'—

But Because Practically Everything in the Sale is a Direct Reproduction of Paris!

Renee's "lines", Jenny's "colors", Lanvin's "themes", Charlotte's and Germaine's famous "little girdles".

- Fabrics: Velvetines, Violin, Tricot Velvets, Piquettes, Portlet Twills, Twine Cordes, Canton Crepes, Roshanara Crepe, Lace-and-Clifton Salt-facod Crepe, Heavy Crepes de Chine. Colors: Fuchsia, Violet, French Geranium, Coral, Nile Green, Turquoise, Sapphire, Tanager Red, Dark, Wonderful Brown, Midnight and navy Blue, Black—Black galore! Styles: Street Dresses, Dance Dresses, Dinner Dresses, Theatre Dresses. —But, most of all, the A-t-a-r-n-o-o-r Gowns that All Philadelphia Wears. Sizes: Misses' Sizes for Ages 14 to 20, Women's Sizes, 36 to 48. —Gimbel's, Salons of Dress, Third floor

Blue Serge, Peter Pan Blouses—Special at \$3.95

—Just as cute as the picture! Maybe the college girls aren't snapping them up! Wool jersey Peter Pans—special at \$3. Scarlet, navy, Mohawk, black, Belgian blue, reindeer and Java. Crepe de Chine, Dressy-Tailor Tuck-Ins—Special at \$5. Peter Pans, Tuxedoes. Pointed collars—all tucks, and with a dainty edging of particularly dainty lace. Two in one styles. Pink or white or bisque. —Gimbel's, Salons of Dress, Third floor

Tomorrow—Last Day of the Shoe Clearance—Odd Lots Half Price and Less

Men's : Women's : Children's People hurried by motor and train to share the bargains yesterday! Here's a list of what one woman bought: Dress boots at \$2.50, originally \$10; walking oxfords at \$4.85, originally \$9.50; satin dress pumps at \$5.65, originally \$11; little girl's shoes at \$2, originally \$3.50; men's shoes at \$3.50, originally \$9.50. Just as good bargains tomorrow! —Gimbel's, Shoe Section, Second floor.

Big Importer Sacrificed His Holdings Fine, Firm Crepe de Chine Handkerchiefs, Special at 15c

Don't confuse them with cheap crepes—these are firm-bodied silk crepes that wash and wear. Color bordered styles. Plain colors with wee lace edges. And all-over designs in colors. Mostly hemstitched. Colors and styles that "box" so daintily. Mail Orders Filled. —Gimbel's, First floor

Women's Union Suits In 3 Styles at \$1.15 Worth a Third More

Fine white cotton union suits, ribbed and slight fleeced, in both extra and regular sizes. Ankle length, low neck and sleeveless. Ankle length, Dutch neck and elbow sleeves, and knee length, low neck and sleeveless. Good weight for winter wear. Specially priced at \$1.15. —Gimbel's, First floor

The Popular Jersey-Top Silk Petticoats at \$2.95 Instead of \$4

Silk-jersey tops. Silk-messaline or taffeta flouncings. My dear, but the colors are pretty! Those Wonderful Radium Silk Petticoats—Special at \$6.95 Straight-line or with three little ruffles. —Gimbel's, Second floor

English Wool Stockings for Children Special at \$2.50 a Pair

Children's three-quarter English wool stockings, all-wool, in all sizes, 8 to 10 1/2. The colors are grays, greens and browns, with fancy turn-over cuff tops in contrasting shades. New goods, imported direct and specially priced at \$2.50 a pair. —Gimbel's, First floor

250 Patterns of Wall Paper Special at 3 1/2c to 70c a Roll Values 18c to \$1.50

3 1/2c TO 9 1/2c PAPERS—For kitchen, bedroom, living room or bath. 17 1/2c TO 30c PAPERS—Chintz, floral stripes, kitchen blocks, set figures, jasper effects, gilt two-tone stripes and foliage. 21c PAPERS—Duplex oatmeal, in all colors and varnish tile. 40c TO 75c PAPERS—Embossed bedroom papers, stripes, chintzes, jaspers, foliage, grass cloth weaves, etc. 30-in. width. All Papers Sold Only with Borders or Binders to Match. —Gimbel's, Fifth floor

If You Found a Doll Under Your Tree on Christmas Morning!

Wouldn't you be a happy little girl? Of course you would, and you'd love her all the better if she was one of the adorable babies from Gimbel's "Treasure Island." 24-Inch Dolls \$4.95—Value \$6. She has curly hair, and goes to sleep like a real baby. Full jointed, all ready to dress, at \$4.95. —Gimbel's, Fourth floor

Special November Sale Prices for 305 Wardrobe Trunks Very Much in the Gift Class!

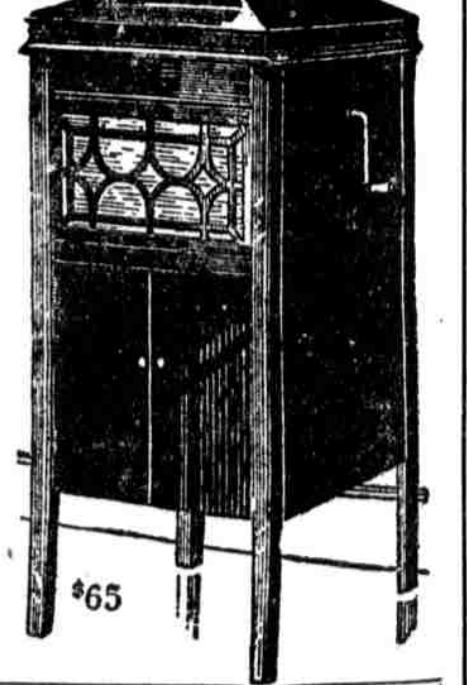
These are the Trunks that deliver your clothes smooth and unrumpled at destination. A capital gift to someone—or yourself! These are all brand new. Innovation—Regularly \$60, at—\$34.95 Three-quarter size, heavy fibre-covered; four drawers; six hangers. Belber—Fiber-covered, Regularly \$47.50 to \$60, at—\$27.50 to \$46.75 Gimbel—Full Size, at \$17.50, \$21.95 and \$34.75 Regularly \$35 to \$60. Ten hangers; shoe bags. —Gimbel's, Seventh floor

Nothing Short of a Furore!! Gimbel Talking Machine Sales Pass All Records!

It's a co-operative proposition—Gimbel's joining the power of their vast outlet in New York and Philadelphia with the manufacturing power of that fine old musical instrument builder, the George P. Bent Co., of Chicago—appreciated since 1870. They Want Us to Be the Great Factor in Making It Possible to Market a Million Phonographs in a Year

Beautifully mahogany-cased; and a talking machine of fine tone and free from surface scratches. It means a great deal to make this development—and they pay for your help in the lowering of price.

\$65 Crown Phonograph \$1 Down, \$1 a Week It's Chicago initiative added to New York and Philadelphia originality and force in marketing.



Thousands of 10-in. Phonograph Records at 35c Three for \$1. These Titles and Many More

Wild Rose (From "Sally") (Introducing My Wild Irish Rose). One Step (Kerns). The Kruller Orchestra. Rose, Fox Trot (Sizemore-MacIn-Bisce). Hey Paw (Fox Trot) (Shirley). The Kruller Orchestra. Banjo-tops with vocal chorus by Ernest Hare. Look What You've Done With Your Box. I Hate You Calling Me (Marshall). Song by Henry Gene Dangerous Egan. Fox Trot (Ruby). The Skaters. Waltz (Waldteufel). Grey Gull Concert Band. Blue Danube Waltz (Strauss). Grey Gull Concert Band. Flanagan's Second-Hand Motor Car. Comic Monologues by Steve Porter. Hy and Si and the Line Fence. Character. Dialogue by Steve Porter and Billy Jones. The Country Doctor and the Hubs Patient. Character. Swapping Horsem. Character Dialogue by Steve Porter and Billy Jones. The Rosary (Nevin-Rogers). Song by Henry Gene Dangerous Egan. I Hate You Calling Me (Marshall). Song by Charles Hart. Apple Sauce (Waltz). Song by Louise Torrell. Old Black Joe (Foster). Song by Ernest Hare. Blue Danube Waltz (Strauss). Song by Ernest Hare. Over the Hill. Held Fast in Baby's Hand.

Piano Store Open Till 9 at Night —for the whole family should have opportunity in the choice of Player-Piano or Phonograph. SEND US THIS GIMBEL BROTHERS, Philadelphia—Without putting me under any obligations please send fuller particulars of—Harrington Autograph } Check the Crown Phonograph } One Desired Name \_\_\_\_\_ Street \_\_\_\_\_ City and State \_\_\_\_\_ Led. 11-51-21