

EARTH IS FLAT AND FIXED, ZION CHILDREN ARE TAUGHT

Teachers Tell Pupils Sun Is Thirty-two Miles Across, Only Three Thousand Miles Away and That Rim of Ice Keeps Mariners From Falling Into Space

Zion, Ill., Oct. 19.—Zion schools, of which Wilbur Glenn Voliva is president, have adopted his new theories of a flat world and the absence of gravitation, and the 1000 grade and high school pupils believe them implicitly, according to their teachers.

The public school maintained in Zion by the State Board of Education for non-members still teaches, however, that the world is round.

At the Zion schools the new course of study teaches that:

The earth is a flat circular world, with a North Pole in the exact center, no South Pole, and surrounded by a wall of ice, which keeps venturesome mariners from falling off the rim.

That the earth has no motion, but remains stationary in space.

That the sun is not millions of miles in diameter and 91,000,000 miles away, but is a little over thirty-two miles across and only 3000 miles from the earth.

That the law of gravitation is a fallacy, and when objects are thrown into the air they continue to rise until the force which propelled them is expended and then fall back to earth because they are heavier than air.

Miss Mary Thompson, principal of the Zion school system, has propounded a question which she believes will trip scientists and navigators. Showing on her flat map that the Tropic of Cancer, 43 degrees from the North Pole, was a much smaller circle than the Tropic of Capricorn, 47 degrees further away, Miss Thompson says:

"Navigators on a globular earth would find if they were to sail completely around either of these tropics they would be ideally the same length. On a flat earth, however, the Tropic of Capricorn would be much larger than the Tropic of Cancer, and would take longer to sail around, because on a flat earth Cancer would be nearer the center, or North Pole. Why

don't some of the 'globular earth believers' try sailing around the two tropics and find out whether they are correct?"

Miss Eva Baker, teacher of geography, teaches that if the sun was so large as scientists say it is it would light up all the world, instead of confining its hottest rays to a 3000-mile-wide belt between the two tropics.

Physician Weds Nurse
York, Pa., Oct. 19.—Dr. James S. Wood, a physician of Mount Wolf, and Miss Mary G. Stuart, a registered nurse of Boag, Neb., were married yesterday in St. Patrick's rectory by the Rev. James J. McGrath.

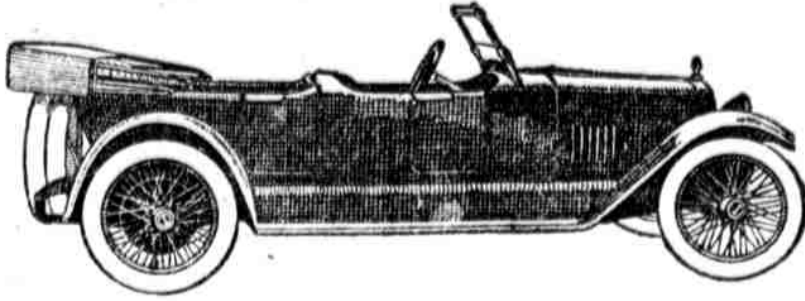
WON'T HALT LEGION

"We Risked More to Reach Objectives in 1918," Commander Says

Indianapolis, Oct. 19.—Delegates to the national convention of the American Legion, to be held in Kansas City, October 31 and November 1 and 2, will go to the convention city before the general railroad strike is scheduled to go into effect and "will abide by the fortunes of war when it comes to getting back," according to a statement issued at headquarters of the Legion here.

It was not indicated whether the Legion contemplated providing transportation for the delegates should passenger service on the railroads come to a standstill. All the communications gave assurance the delegates would manage to attend the convention in some manner.

"We risked more than inconvenience to reach objectives in 1918," wrote a New Jersey post commander. "Nothing can keep us from our convention now." A post adjutant from Utah wrote that the delegation from that post would be at the convention if it was necessary to hike the distance.



When you engage passage on the Aquitania

You do not inquire about the meals, nor do you look up the horsepower of her engines.

You want accommodations of the Aquitania class and know you will get them.

The owner of a Mercer car buys it because he wants a Mercer.

Mercer means a lot more than a list of mechanical features.

Mercer means a certain standard of motor car luxury just as the Aquitania means a certain standard of transportation luxury.

When you buy a Mercer you are engaging first-class passage to motor car satisfaction and pride.

The new prices may tempt you to move up into the Mercer Class:

TOURING	\$3950
SPORT	3950
RUNABOUT	3950
RACEABOUT	3950
TOURING LIMOUSINE	5250
COUPE	4850

Two Extra Tires and Tubes Included in Standard Equipment

Curran-McDevitt Motor Co., Inc.
675 N. Broad Street, Philadelphia, Pa.
Phone Poplar, 1991
OPEN EVENINGS

Manufactured By Mercer Motors Company, Trenton, New Jersey



R & V Knight MOTOR CARS FOURS & SIXES

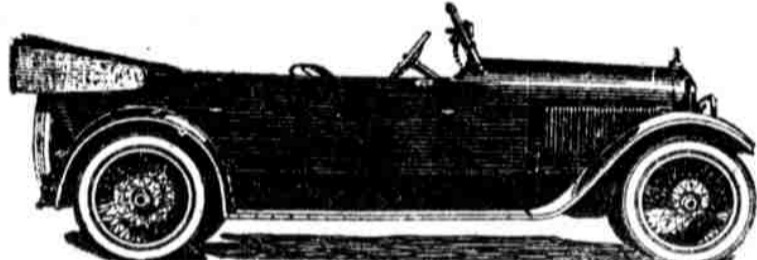
R & V KNIGHT ENGINES do not wear out—they are famed for endurance and economy. The R & V H T sleeve-valves require no grinding or adjusting. They work with the precision of a fine clock. The longer a motor is used, the smoother and quieter becomes its action. R & V KNIGHT MOTORS are used in all the Fifth Avenue Busses in New York. Even in Detroit, known as the home of automobiles, the Bus line uses R & V KNIGHT MOTORS built in East Moline, Illinois.

READ THIS UNUSUAL OFFER

Until November 15th we will sell the NEW 1922 MODEL R TOURING CAR at \$1200 F. O. B. Factory—REGULAR PRICE \$1500

SEE THE SMART MODELS NOW IN SHOW ROOMS

BATDORF MOTOR SALES CO.
DISTRIBUTORS
2504 NORTH BROAD STREET



THIS 1922—MODEL R—FOUR CYLINDER R & V KNIGHT NOW \$1200

Note!—A few desirable territories still open

Any Time

"Here are a few little things I would rub up now and not wait for wash day if it were not for the bother and length of time it takes to get the water hot."

No need to feel this way if you have a Lovekin Gas Water Heater. Its automatic features keep it over on the job and piping hot water can be had any time.

No Matches—No Bother—No Dirt
Automatic—Lights Itself
Write for Booklet—Get the Facts
Buy it from your Plumber, the Gas Co., or any gas appliance company.

"Made in Philadelphia"

THE LOVEKIN WATER HEATER CO.
39 Laurel St., Phila.

Lovekin

AUTOMATIC GAS WATER HEATER

Brunswick

November Brunswick Records

—ON SALE TOMORROW—

Equally divided between the classical, the romantic, and the all-popular dance hits, November Brunswick records offer a series of fresh delights to all classes of music lovers. Check those you wish to hear—then call upon your nearest Brunswick Dealer.

30008	Avant de quitter ces lieux—Duo possente (Even Bravest Heart) (from Faust: Act II (Gounod) Baritone (in French) Giuseppe Danise
30012	Un bel di vedremo (Some Day He'll Come) from Madame Butterfly: Act II, Scene 1 (Puccini) Soprano In Italian Florence Easton
10928	I Hear a Thrush at Eve (Eberhart-Cadman) Tenor Theo. Karis
10929	Come Where My Love Lies Dreaming (Foster) Tenor Theo. Karis and Criticos Male Trio
10947	O Sole Mio (My Sunshine) (Capurro-di Capua) Tenor In Italian Mario Chamlee
30013	Fantasia Impromptu (Chopin) Pianoforte Solo Leopold Godowsky
10947	Serenade du Tzigane (Gypsy Serenade) (Yaldes) Pianoforte by Frederic Parson Violin Solo Max Rossa
30028	Faust—Duet from Garden Scene (Gounod) Vassella's Italian Band Boheme Selection (Puccini) Vassella's Italian Band
137	American Patrol (Mechanic) Walter B. Rogers and His Band General Mixup, U. S. A. March (Allen) Walter B. Rogers and His Band
312	Serenade (Tosti) Violin-Flute-Harp Gondolier Trio
30014	Ma (Conrad)—Fox Trot Isham Jones' Orchestra
30015	Wahack Blues—Fox Trot Isham Jones' Orchestra
30016	Why, Dear? (Cohen)—Fox Trot Isham Jones' Orchestra
30017	My Sunny Tennessee (Kalmor-Ruby) Isham Jones' Orchestra
314	In My Tippy Canoe (Fisher) Contraltos and Tenor Emily Castle and James Craven
315	Dream of Your Smile (Conrad) Baritone Ernest Hare
316	I Ain't Nobody's Darling (Hughes-King) Harmonium-Male Quartet
317	It Must Be Someone Like You (Frost-Strait)—Barry Billy Jones
318	I'm Looking For a Blue Bird (Marcell-Rich) Tenor Al Bernard and Carl Fenton's Orchestra
319	Oh! Brother, What a Feeling! (Cook) Baritone Ernest Hare

NOTABLE INTERPRETATIONS OF MODERN DANCE MUSIC

30020	Come to the Moon—Fox Trot Gene Rodemich's Orchestra
30021	Nobody Knows—Fox Trot (Saxophone and Piano) Rudy Wiedoff
30022	Patches—Fox Trot Gene Rodemich's Orchestra
30023	Sweetie—One Step Gene Rodemich's Orchestra
30024	Now You—One Step Gene Rodemich's Orchestra
30025	I'm So Sympathetic—Fox Trot Gene Rodemich's Orchestra
30026	Just Snap Your Fingers at Care—Fox Trot Gene Rodemich's Orchestra
30027	Castle of Dreams—Fox Trot Gene Rodemich's Orchestra
30028	Margie—Fox Trot Gene Rodemich's Orchestra
30029	Home Again Blues—Fox Trot Gene Rodemich's Orchestra
30030	June—Fox Trot Gene Rodemich's Orchestra
30031	Treasure Isle—Fox Trot Gene Rodemich's Orchestra
30032	Singin' the Blues—Fox Trot Bennie Krueger's Orchestra
30033	Kiss-A-Miss—Waltz Carl Fenton's Orchestra
30034	Crazy Blues—Fox Trot Bennie Krueger's Orchestra
30035	Royal Garden Blues—Fox Trot Bennie Krueger's Orchestra
30036	Spread 'em—Fox Trot Bennie Krueger's Orchestra
30037	Wang Wang Blues—Fox Trot Bennie Krueger's Orchestra
30038	I Wonder Where My Sweet, Sweet Daddy's Gone—Fox Trot Bennie Krueger's Orchestra
30039	Satanic Blues—Fox Trot Bennie Krueger's Orchestra
30040	Ain't We Got Fun—Fox Trot Bennie Krueger's Orchestra
30041	Dangerous Blues—Fox Trot Bennie Krueger's Orchestra
30042	All By Myself—Fox Trot Bennie Krueger's Orchestra
30043	Saturday—Fox Trot Bennie Krueger's Orchestra

THE BRUNSWICK-BALKE-COLLENDER CO.
Established 1845—Chicago

ANY PHONOGRAPH CAN PLAY BRUNSWICK RECORDS

Coal MAKING Is What Adds To Coal Mining Costs

CRUDE anthracite is wholly unfit for home use. As brought up from the mine it is mixed with a mass of rock, slate and dirt. It must actually be manufactured to make it usable. Manufacturing costs, therefore, must be added to mining costs.

Crude anthracite is hoisted 500 to 1500 feet to the surface after an underground railway trip of a mile or more. It then goes to the breaker. Here, in a capacious factory, ten stories high and costing today in many cases a million dollars or more, its transformation begins.

The mine run is dumped on a screen. The big lumps pass over a picking table where the rock and slate is removed by hand.

The large lumps of coal are crushed by enormous rolls. To make the many different sizes consumers demand, the coal passes over and through perforated shaking screens until each size is sorted out.

Remaining slate and other impurities are eliminated by jigs, spirals, mechanical pickers or by breaker boys.

Although thoroughness and care attend every process of manufacture, tests for sizing and impurities are made even after the coal reaches railroad cars.

As many as 375 men are employed in and around a large modern breaker PREPARING coal after it is mined.

Of the 150,000 men employed in the anthracite industry, only 50,000 men are engaged in actual mining. 100,000 men are engaged in handling the coal AFTER it is mined.

This is No. 6 of a series of hard coal facts presented in an effort to help you decide for yourself whether anthracite same prices are fair. Watch for future advertisements in this newspaper.

For further information and order information call on us at:

ANTHRACITE General Policies Committee
437 Chestnut Street, Philadelphia

"Black Diamond" Unit Quotes for the following range of anthracite prices per gross ton, F.O.B. mines:

Export	\$7.00
Home	\$7.00
Standard	\$7.00
Lowest	\$7.00

Economy Basement Specials for Thursday

STORE OPENS DAILY 9 A. M.—CLOSES AT 5:30 P. M.

WEDNESDAY, OCTOBER 19, 1921

SNELLENBURG'S

ENTIRE BLOCK—MARKET 11th to 12th STREETS

Women's and Misses' Prettiest New Dresses

For Fall and Winter At Prices That Have Reached New Low Levels

\$9.95 & \$15

Beautifully made of tricot, Canton crepe, satin, jersey, serge and velveteen in most-wanted colors.

Styles galore, including the fashionable long-waisted and straight-line effects, with long or short sleeves and self material, ribbon or fancy leather belts. One sketched.

Charmingly trimmed with buttons, ribbons, braids, silk embroideries, beads, fringes, etc.

Women's and Misses' \$30.00 Winter Suits

Majority Cleverly Trimmed With Fur

at \$19.75

Smart long coat models, with belted or flare backs, fur collars, cuffs and trimming around bottom of coat. Other models with silk stitching, silk embroidery and button trimmings. Many have new flare sleeve. Velour and tricot in brown, reindeer and navy. One pictured.

Women's and Misses' \$22.75 Winter Coats

Velour and hollis in reindeer, navy and brown. Good-looking loose flare, plaited or belted back models, with deep fur or self material collars, silk stitching, raglan or regulation sleeves.

Women's \$2.50 Tuck-In Blouses

Plain, checked and striped voiles, with ruffles, Tucks, pointed or round collars. Many trimmed with frilling, lace and hemstitching.

Women's Fur Chokers

Opossum, Jap mink, squirrel, stone marten, brown fox and rose fox. All have full brushes.

Women's Fur Chokers

Double animals of squirrel and Jap mink. Extra-fine values! Economy Basement

Women's & Misses' \$2 Petticoats & Pantalettes at \$1 Each

Of extra good quality satin in all the wanted shades. Petticoats have ruffled or plain-tailored flounces. Pantalettes have double rows of shirring and plaited ruffles.

Women's and Misses' \$3.50 Silk Petticoats \$2.59

Silk jersey, tulle and combinations of jersey and tulle. Newest plain styles and combinations of shades.

Women's \$7 Pure Worsted Tuxedo Sweaters at \$3.95

Excellent variety of colors, including navy, also black. Good-looking sweaters—splendid for outdoor wear. Very pretty weave and soft, warm texture.

Worth-While Savings on Boys' Clothing

Boys' \$6.50 Combination Black Rubber Raincoat & Hat at \$4.65

Every lad of 4 to 16 needs one for stormy weather—they're an excellent protection. Of extra good quality rubber.

Boys' Corduroy \$5.50

Suits at \$5.50

Sweater styles, with full-lined linings. Good quality corduroy. Sizes 6 to 17 years.

Boys' Suits With \$6.65

2 Pairs Pants

Fancy of color and construction in large variety of patterns. Full-lined. Sizes 7 to 17 years.

Boys' Mackinaw Coats at \$6.75 & \$8.25

Good quality blanket cloth in light and dark plaids. Sizes 7 to 18 years.

Boys' Junior Overcoats at \$1.95, \$5.95, \$6.75 & \$8.75

gorge belted and button-top styles. Sizes 7 to 14 years.

Boys' Knickers .95c

Sturdily made of corduroy and mixed cloths. Sizes 6 to 14 years.

Boys' \$2.25 \$1.49

Knicker

Well made of fancy mixed corduroy, flannel and cotton. Sizes 6 to 14 years.

Girls' \$12.50 Fur-Collared Winter Coats

Share in This Special Offer and Benefit by a Good Third

at \$7.95

Fine kersing, velour, cloth and satin. Many belted models, with large fur collars, cuffs and all material button trimmings. Warmly lined throughout. Sizes 6 to 14 years. Wonderful values!

Girls' \$1.00 and \$5.00 Serge Dresses at \$2.95 and \$3.95

One pretty model trimmed with small and medium. Juniper styles have either brown flannel or pongee-like linings. Belts and pockets. Desirable for school or dress wear. Sizes 6 to 14 years.

Girls' \$1.50 Middy Blouses .79c

Jeans in cord or plain styles, some with Peter Pan collars. Also pongees in natural, white and Copenhagen.

Girls' \$3.00 and \$4.00 Bloomers \$1.95 and \$2.95

Full made of serge and saten in regulation style for gym or school wear.

SNELLENBURG'S Economy Basement
N. SNELLENBURG & CO

ANY PHONOGRAPH CAN PLAY BRUNSWICK RECORDS

THE BRUNSWICK-BALKE-COLLENDER CO. Established 1845—Chicago

ANY PHONOGRAPH CAN PLAY BRUNSWICK RECORDS

For further information and order information call on us at:

ANTHRACITE General Policies Committee
437 Chestnut Street, Philadelphia

S. D. Warner, President, Lehigh Coal & Navigation Co.	W. J. Richards, President, Philadelphia Reading Coal & Iron Co.	W. L. Allen, President, Scranton Coal Company	Alan C. Dodson, President, Weston Dundon & Co.	D. B. Wentz, President, E. S. Wentz & Co.
W. W. Ingels, President, Glen Alden Coal Co.	C. F. Huber, President, Lehigh & Wilkes-Barre Coal Co.	Perce C. Madeira, President, Madeira, Hill & Co.	John Markle, President, Iddo-Highland Coal Company	W. L. Connell, President, Green Ridge Coal Co.
John M. Humphrey, President, Lehigh Valley Coal Co.	W. A. Mav, President, Pennsylvania Coal Company		William Collins, President, Susquehanna Collieries Co.	S. B. Thorne, President, Thorne, Neale & Co.