



DOOLEY WINNING. The horse owned by J. E. Ridgeway, victorious in the Pennsylvania Hunt Cup race, a 2 1/2-mile cross-country run



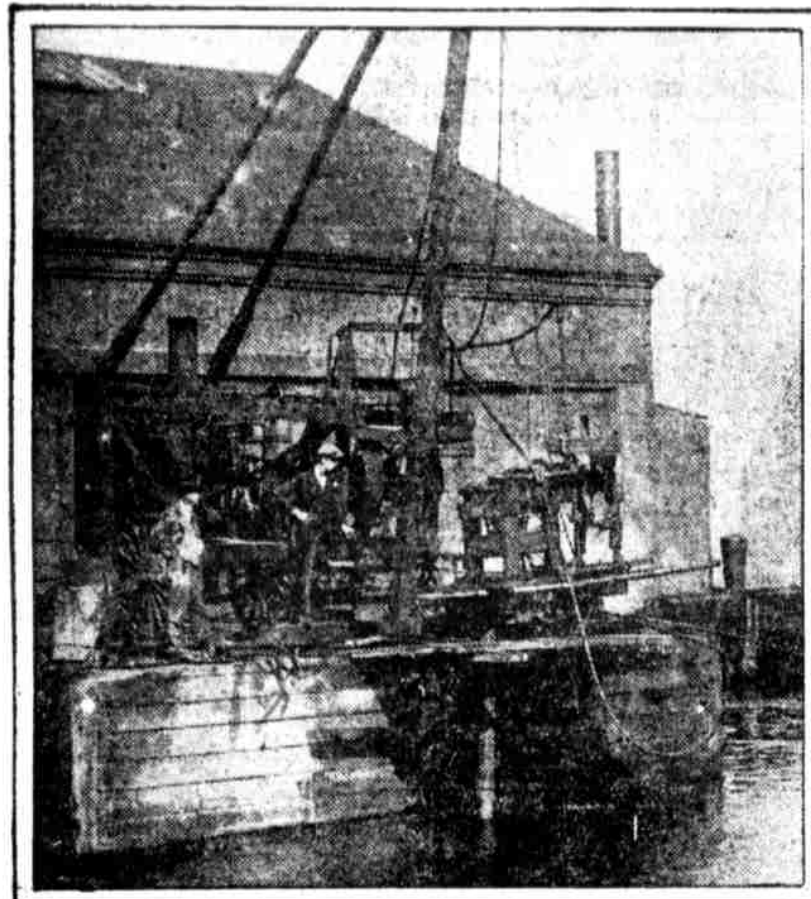
SOCIETY ON HAND. In this group are Miss Eleanor Coleman, Miss Annabelle Sewell and Miss Elise Robinson (left to right)



COMING ON THE SCENE. This four-in-hand outfit, caught in action, brought the Strawbridge party to the meet



TIM MCGHEE, of the Columbus (Ohio) P. R. R. team, who hit homer against local team



PHILADELPHIA-CAMDEN BRIDGE WORK. Sunday found workmen busy boring into the bed of the Delaware River at Pier 11, North Wharves. The work is being done by the Pennsylvania Drilling Company. At the right W. K. Hunkele is marking and packing the cores from the large drill



EAST FOOTBALL. A Holmesburg player is jumping in an effort to stop an attempted forward pass. A Vincombe player is also up off the ground in the game played at Holmesburg



LEAVING THE CITY. Galli-Curel, the singer, was in town for a concert engagement last week. She was photographed with her husband, Homer Samuels



M. W. NEWTON talks on Philadelphia's hotel situation in an Editorial Page interview



MEN CAN'T JOIN. That's tough, for many men would be glad to associate with a chamber of commerce with as many girls as members as are in the West Philadelphia High School for Girls C. of C. They went down the Delaware on Saturday to inspect the riverfront. Among those present were Rosa Landesberg and Marion H. Smith



AT VALLEY FORGE. Senator Lodge (left) chats with Senator Moses as they wait for the start of the funeral services of Senator Knox on Saturday



HELPING PRESBYTERIAN HOSPITAL. A Chinese operetta, "The Feast of the Little Lanterns," will be presented this evening at the Bellevue-Stratford. Among those in the cast are (left to right) Miss Louise Salyna, Miss Elizabeth Simpson and Miss Clara Nagel



OUR CITY'S WORKERS AND WHAT THEY DO



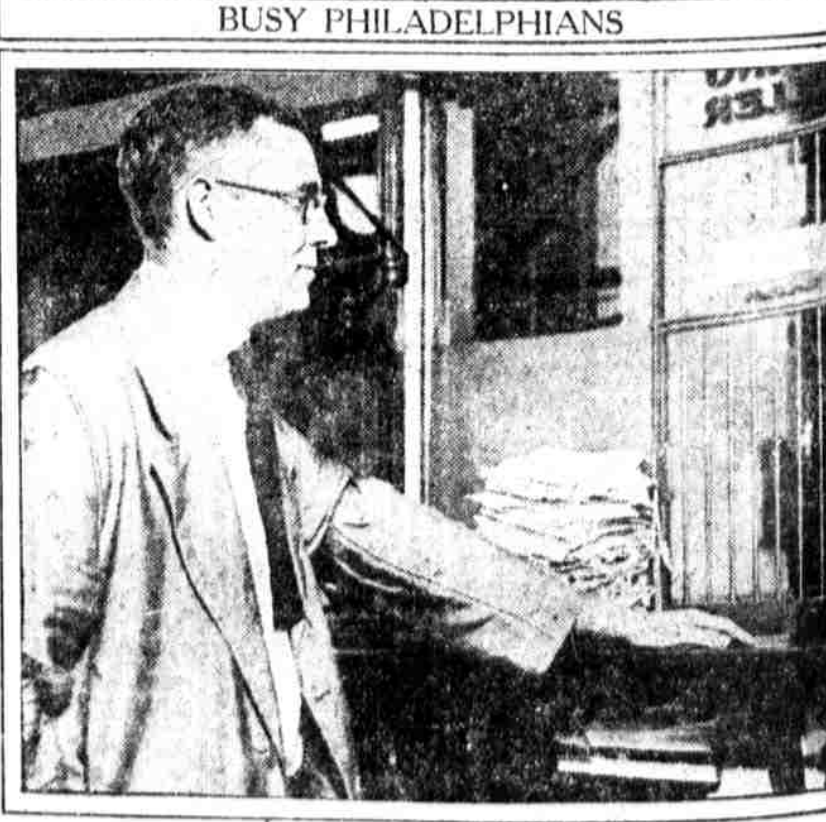
ALBERT E. HUGHES, 8 Wynnewood avenue, Westmont, N. J., soldering tank used for weighing milk in dairies at the mill of the A. H. Reid Creamery and Dairy Supply Company. Sixty-ninth street and Haverford avenue



WELCOME BRITISH GIRLS. Miss Elizabeth Cheston, captain of the 1920 girls' hockey team of Philadelphia, snapped as she greeted Miss C. J. Gaskill, captain of the British team, on arrival of the Haverford



RABBI JOSEPH SAUL KORNFELD, of Columbus, Ohio, has been asked to accept diplomatic post



JAMES W. WALCH, paying teller at the Fourth Street National Bank. He has been associated with that bank for nineteen years. Walch lives at Ardmore Park, Delaware County. Gardening is his hobby