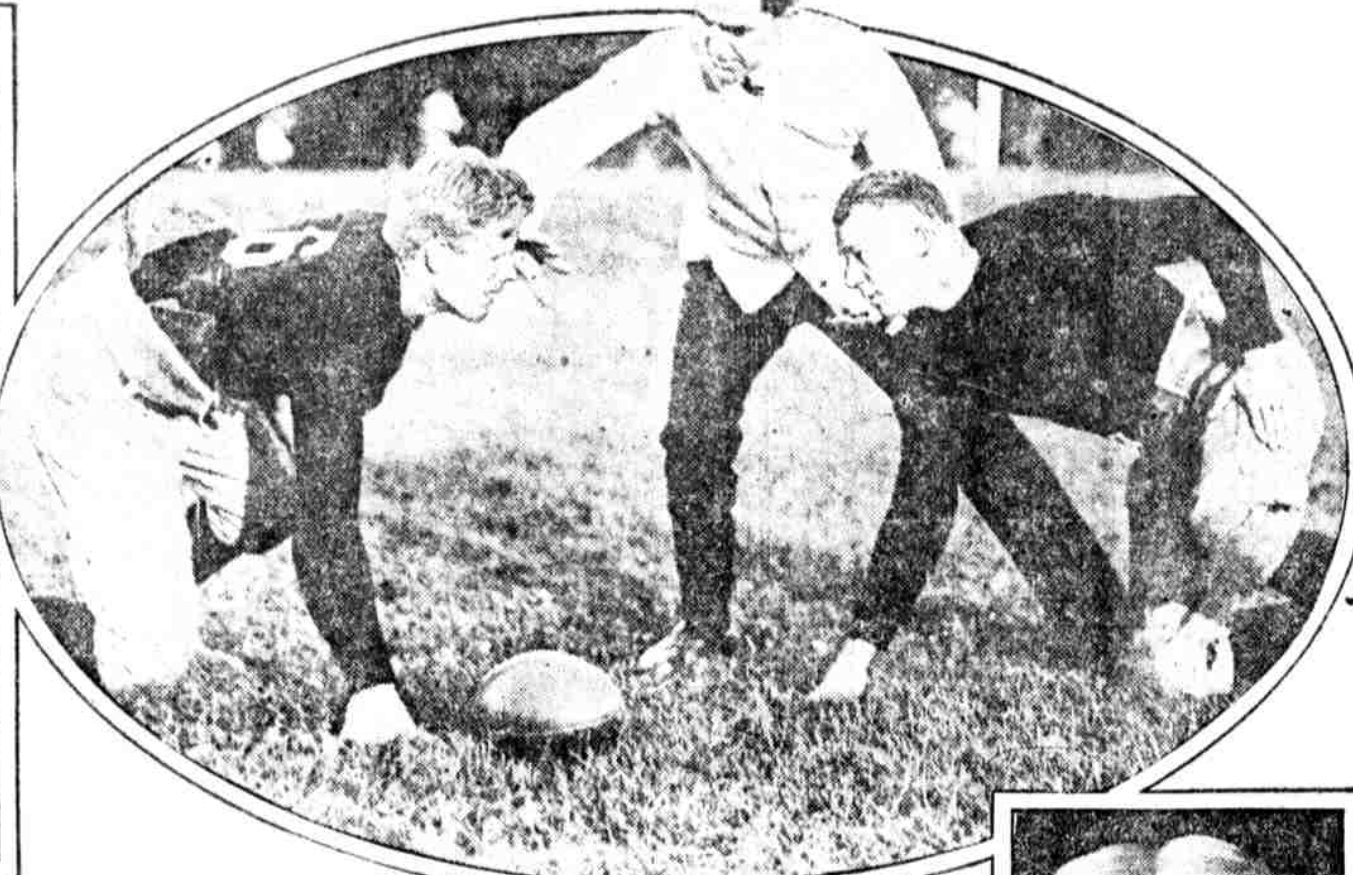


ENTERTAINING A KING AND QUEEN. Eusebio Sanchez, noted Spanish motorist, and three assistants during a motorcycle thriller in Madrid. It was arranged for the King and Queen of Spain.

WINNING SKIPPER. Captain Marty Welsh, of the Elsie, which yesterday won 40-mile fishing schooner race off Maine Coast.

"JOLLY LITTLE DUTCH GIRL." Miss May Moore Dupren, London's three-year-old vaudeville star, is a British favorite.

FRANKFORD GOING THROUGH. The Frankford High School lads and Northeast played a hard game on the Frankford Field, yesterday. Frankford won.

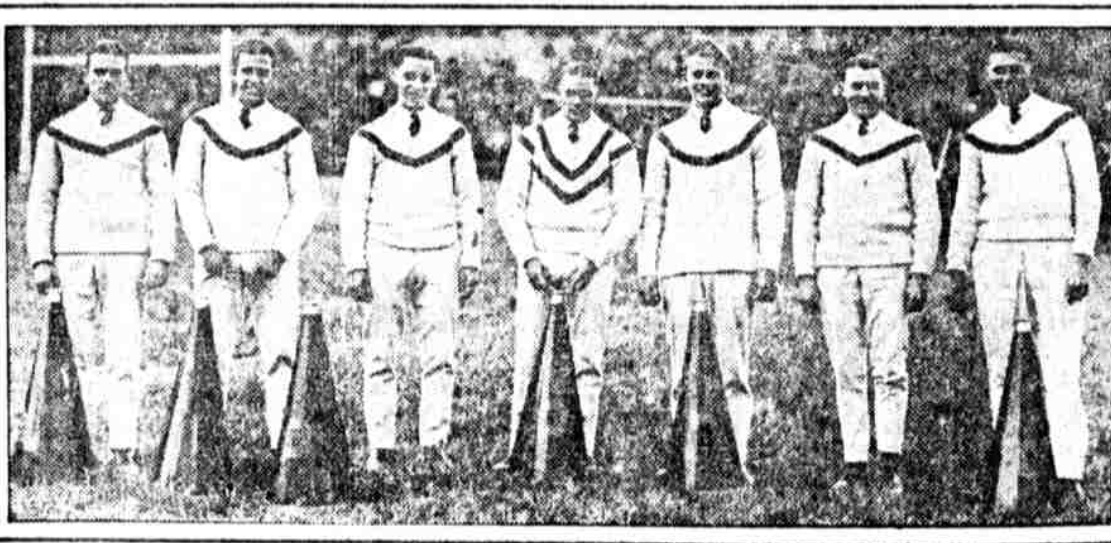


THEIR VACATIONS ENDED. Miss Constance De Laney (left) and Miss Judith Smith of New York, the first...

MUCH TRAINING AT HAVERFORD. Football Coach Dr. M. S. Bennett, of the Main Line college, is spending a lot of time these cool days in getting his men in condition. He's giving a lesson in tackling.

CHURCHMAN AND SOLDIER. The cameraman caught these prominent Philadelphians on Broad street. Bishop...

LAND GIRL AND CALF. British girl land toiler exhibited at an English fair.



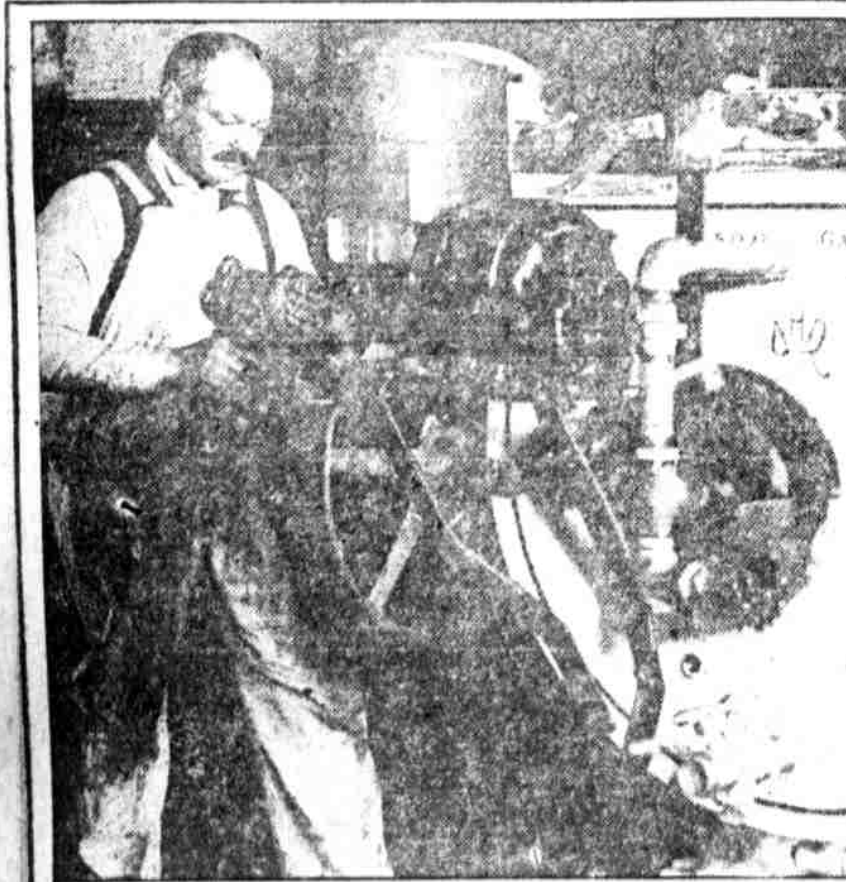
BOY GETS GUARNERIUS VIOLIN. John Richardson, 5038 Baltimore avenue, considered a genius as a violinist, was presented with this valuable instrument by Judge Copton, of Atlantic City.

LADY FOOTBALLERS. The girl in white is the goalkeeper for the Osram team of London. She is after the ball, as a goal is threatened.

GENERAL JAMES H. McBEA, a new member of Pe...'

READY FOR SWARTHMORE. This squad of noisemakers and song leaders of the Red and Blue student body are in great condition for tomorrow's game.

OUR CITY'S WORKERS AND WHAT THEY DO



JOSEPH LINA, 6666 Chester avenue, at work in the factory of A. H. Reid Creamery and Dairy Supply Company, Sixty-ninth street and Haverford avenue. He is assembling a buttermilk machine.

FROM GREENLAND'S ICY MOUNTAINS. Torself Guldbrandsen, who arrived from the Far Northland as a member of the steamship Vesia crew.

CARRYING THE MASCOT. These girls were conducting a sports carnival in aid of West London Hospital, at Acton, Eng.

DOG FANCIER. Janet Schmidt, with Ivel Tyke, her prize-winning pet.

A STRONG TOSSEY. The athlete is Langdon, a member of Coach Litsman's scrub team at Penn. The camera man caught him during practice.