

BURGLARS CRACK SAFES; GET \$7

Unable to Open Doors of Two Strong Boxes Protecting \$2000

IN UNDERWOOD OFFICE

Burglars broke into the Underwood Typewriter Company's office at 1006 Chestnut street some time between Saturday night and this morning and made an unsuccessful attempt to crack two safes containing about \$2000. They hammered the combinations off the safes, but were unable to force open the doors.

Entrance was gained through the rear on Sanson street. On the second floor desks were forced open and \$7 stolen.

J. W. Blodgett, manager of the office, said it is not known yet if any typewriters were taken. Detectives examined the safes and several finger prints were photographed.

Drowns in Bathtub
Seized with an epileptic fit while bathing yesterday, James Dalley, thirty-eight, was drowned in a bathtub in his home, at 2955 Wilder street.

Oven Baked Beans Individual Pots, 10c



You'll never know how good Baked Beans can be until you try ours.

24 Restaurants centrally located.

HORN & HARDART BAKING CO.

THESE FISH NOT SO POOR

35,000 Persons in Day Think Them Worth Seeing

The annual exhibition of prize gold fish will close at Horticultural Hall in Fairmount Park this afternoon.

Guards at the show estimate more than 35,000 persons attended yesterday alone, the second day of the affair. Despite the twelve guards on duty several times during the day, more had to be called to handle visitors.

The exhibition is under the auspices of the Aquarium Society of Philadelphia, the Philadelphia Gold Fish Society, the Kensington Gold Fish Society and the Pennsylvania Fish Culturists' Association.

When Your Complexion Begins to Fade

You Can Bring Back That Tint of Youth

When your complexion begins to fade, because of age or neglect, this simple home treatment will delight you—and it requires but a few minutes each day. Wash the face, hands, neck or arms with warm water and Black and White Soap. Lightly apply Beauty Bleach. Allow it to remain overnight. Next morning again cleanse the skin with warm water and soap. Should you experience the least irritation, use just a little scotching Black and White Cleansing Cream.

Black and White Beauty Bleach, the skin beautifier, sells for 50c; Black and White Soap, 25c; and Black and White Cleansing Cream, 25c and 50c the package.



BLACK AND WHITE BEAUTY BLEACH
RESTORES THE COMPLEXION

Thursday Oct. 6th

We'll Open a New Department to the Philadelphia Public with the

Greatest Sale Ever Heard of

Manufacturers Have Contributed Freely; We Have Sacrificed Profits. It's a True Sensation!

See Tomorrow's Evening Public Ledger

FRANK & SEDER

Eleventh and Market Streets.

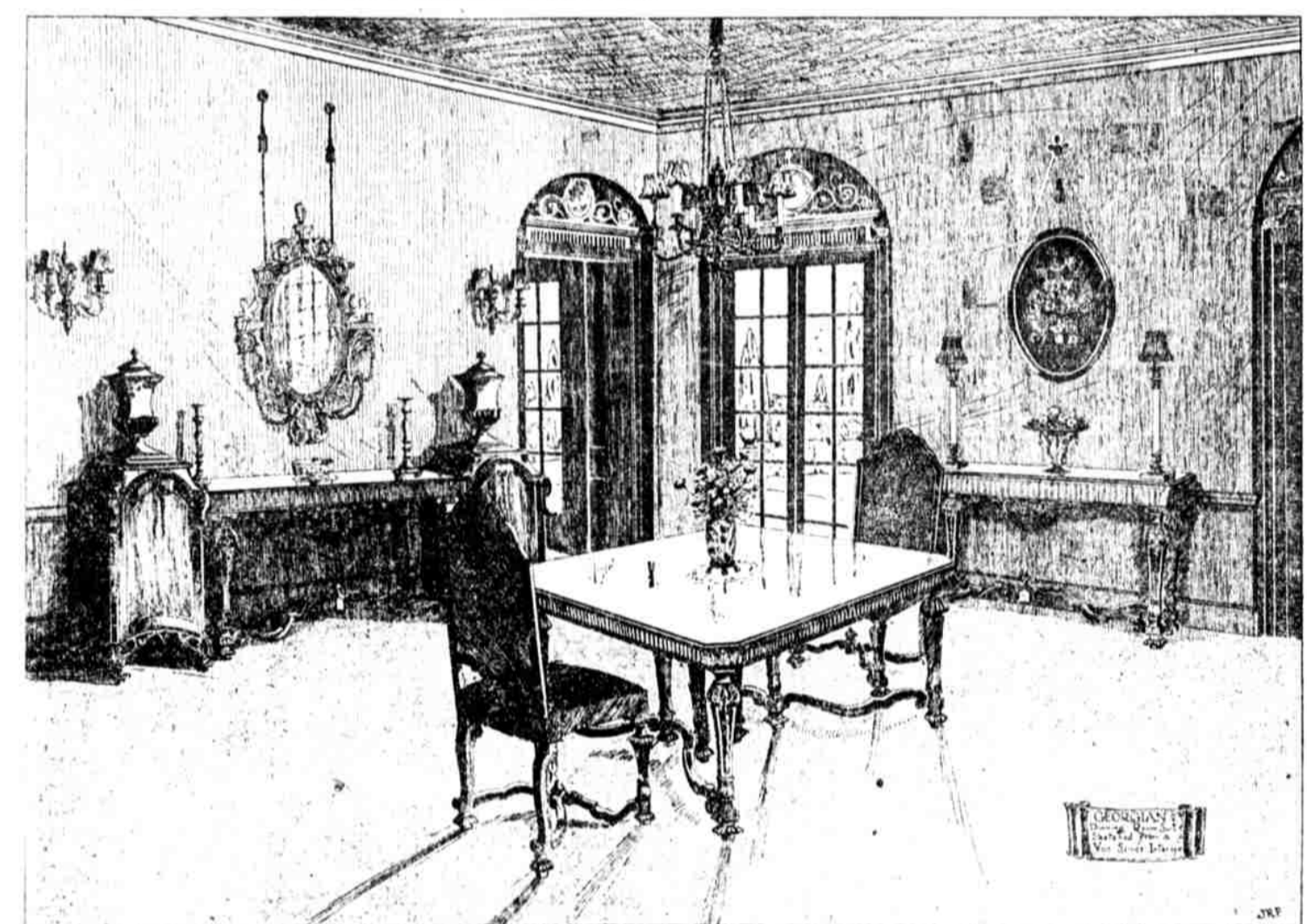
Autumn Values That Exemplify the Great Price Changes in the Furniture World

Values that reflect the economical trend of the times—just when thousands of housewives are in the midst of home-making preparations for winter.

A collection of Furniture that is vast and admirable beyond description. The product of the keenest factory competition that the country has known in years. Newer, handsomer and, if possible, better Furniture than has been assembled anywhere for many an Autumn season. The last word in manufacturing efficiency and competitive economy, as it is in style and in stability.

What is more, belated shipments bought for the August Sale, as well as complete Suites and parts of Suites in discontinued designs, together with hundreds of Single Pieces, accumulated from the heavy selling of the past few months, constitute opportunities to save that nothing we know of in the Furniture line can compare with.

For it is not only knowing the kind of Furniture to make, and how to make it; the kind of Furniture to buy, when to buy and how to buy it, but it is the quality and the value that is put into the Furniture we sell, as well as the close margin of profit we are satisfied to get out of it, that creates opportunities here that are without parallel—make comparisons where you may.



An Exquisite Mahogany Georgian Dining-Room Suite—Superb in its lines and admirable in its execution, this luxurious Georgian Dining-Room Suite disseminates an atmosphere of grandeur. The Buffet, formed by the grouping of the two Pedestals with their respective knife and fork Urns, and the Side Table between, is impressive in its classic detail. Likewise the Central and Side Tables, with their curved legs and graceful stretchers, reveal art and skill in every line. The simplicity of the room itself, relieved by the refined embellishments, accentuate the character of the Furniture, making a background worthy of this dignified Suite.

Unusual Values in Floor Coverings

Unlike war-time conditions, when Rug and Carpet manufacturers were confined to the production of a few patterns, makers of Floor Coverings today are outdoing former efforts in the beauty and variety of their weaves, at lessened costs of production. Prices have now reached a level that thousands of our customers have been waiting for and which are exemplified here in Rugs and Carpets of every wanted grade, design and color.

Here are a few of the savings on 9x12 size Rugs, although there are proportionate reductions on many other sizes throughout our extensive Carpet floors.

\$26.50 Reversible, Wool Face, 9x12 \$19.75
\$45.00 Seamless Velvet, 9x12 \$34.50
\$42.50 Seamless Velvet, 9x12 \$28.50
\$60.00 High-Pile Axminster, 9x12 \$45.00
\$45.00 Axminster, 9x12 \$32.50
\$72.00 Finest Seamless Velvet, 9x12 \$52.50

\$2.25 and \$1.75 Inlaid Linoleum 75c sq. yd.
85c and 75c Congoleum and Floortex 40c sq. yd.

Opportunity in Oriental Rugs—Just arrived, new importations of Chinese Rugs at lower than pre-war prices. Also Persian and Turkish Rugs far below market values.

Opportunities in Office Furniture

Economical changes in the Office Furniture manufacturing market enable us to offer Furniture at greatly reduced prices. Roll and Flat Top Desks, Revolving Arm and Side Chairs, Director's Tables, in Oak, Mahogany and Mahogany finish. Filing Devices in Wood and Steel and other accessories for business needs. For instance—

The Desk illustrated is of Golden Oak, equipped with vertical letter file in lower right hand drawer. Size, 60x32 in. Regular \$78.00 value, \$49.75.

DRAPERY FABRICS, PORTIERES, LACE CURTAINS AND BED COVERINGS

Large stocks from which you can make selections at values that we believe are unmatched anywhere.

PORTIERES—Armures, all desirable colors, \$5.25 to \$11.25. Lunars, all desirable colors, \$1.00 to \$21.00. Velvet, double faced, full width, \$21.00 and \$24.75. Fancy Matras, good colors, \$6.50 to \$14.75.

BLANKETS—Good quality cotton Blankets, good or white, \$1.25 per pair. Wool Blankets for double beds, \$7.00 to \$22.50 per pair. Wool Blankets for single beds, \$5.75 to \$20.00 per pair.

LACE CURTAINS—Satin Curtains, hem-stitched, 90c pair. Fancy Marquise, \$1.35 per pair up. Buffalo Muslin and dotted Green, \$1.25 per pair up. Blue Velvet Curtains, \$1.00 pair up. Irish Point Curtains, \$5.25 per pair up.

DRAPERY FABRICS—In a wide range of fabrics, colors and designs; 45 in. to 20 in. in width; priced as low as \$1.15 per yd.

GREENS, 25c yd. and up.

J. B. Van Sciver Co.

Manufacturers, Importers and Retailers

MARKET STREET FERRY, CAMDEN, N. J.

Store Opens at 8:30 A. M. Closes at 5 P. M. Telephone (Pennsylvania, Call Lombard 0209. Connections (New Jersey, Call Camden 240. Market Street Ferry Boats Load Opposite Store.

Apartments at the Rittenhouse

Renovated, refurbished—made spick, span and inviting. Outside rooms, cool, cheerful. Pick from these: Two Rooms and Bath. Three Rooms and Bath. Four Rooms and two Baths.

Rittenhouse Hotel, 22d and Chestnut

Diamonds Remounted Are Greatly Increased in Value

We specialize in making the best platinum mountings. Our facilities are unexcelled; the designs original, and the cost surprisingly moderate.

We will be glad to prepare drawings, showing how your old-fashioned pieces can be remodeled into modern jewelry, still retaining their sentimental value.

S. Kind & Sons, 1110 Chestnut St.
DIAMOND MERCHANTS—JEWELERS—SILVERSMITHS

—free this set of cleaning attachments with each new model Phila. Electric Cleaner

\$3.50 First Payment

places this cleaner—plus the complete set of cleaning attachments free in your home, and the balance is payable in convenient monthly amounts. These special easy terms are good only for the period of the offer.

Continuing our introductory special on the new model of our well-known Phila. Electric cleaner, we are offering, free with each cleaner, a complete set of the cleaning attachments selling regularly at \$12. These are particularly efficient cleaning tools and most convenient for cleaning overstuffed furniture, books, draperies, mattresses, clothes, pillows, stairs, walls, molding, radiators and hard-to-get-at places.

The new model Phila. Electric cleaner has a wider nozzle, giving greater cleaning power, and a larger, more efficient brush. As a final touch, it is better balanced, making for easier work and longer life. All in all, it is a cleaner which we are glad to recommend to our customers as a really good cleaner value.

Our electric cleaner experts will be glad to give you a practical demonstration of the new model Phila. Electric cleaner and the attachments at any of the showrooms listed below. Or, telephone Walnut 4700 for full data.

The PHILADELPHIA ELECTRIC COMPANY
TENTH AND CHESTNUT STREET
8 S. 40th St. 6th and Diamond Sts. 4300 Frankford Ave. 3100 Kensington Ave.
12th St. and Columbia Ave. Broad and Rusecomb Sts. (Logan) 7 and 9 W. Chelton Ave.
Broad and Wharton St.

George Allen, Inc.

1214—Chestnut Street—1214

Now a days it's Allen's Hats PRESENTING NEW CREATIONS IN

Autumn Millinery

\$15.00 to \$35.00

Hats that conform faultlessly with fashion and have in addition the distinguishing charm of exclusiveness. The colors are quite lovely—the rich fuchsia and flaming sunset tones, the aristocratic blues and, foremost in importance, black.

Annual Autumn Sale of Notions and Toilet Articles

Allen's French Hairnets
The old original quality, 10c each; \$1.00 a dozen.

During This Sale Only, Six Dozen for \$5.00 Assorted any shade you wish.

Double Mesh Hairnets, Now \$1.00 Dozen
White and Gray Hairnets, 15c each; \$1.50 dozen.

Well-Known Toilet Requisites Reduced

Dorin French Compact Face Powder, usual 50c size, special 35c; tax 2c.
Coty's L'Origan French Face Powder, all shades, 60c box; tax 3c.
Mary Garden large size Compact Face Powder, hinged lid with mirror, 90c box; tax 4c.
Un Air Embaume, large size Compact Face Powder, special \$1.25; tax 5c.
Azorea or Floramyne French Face Powder, 8c; tax 1c.
Johnson & Johnson Red Cross Baby Talcum, 19c; tax 1c.
Roger & Gallet French Toilet Talcum, 21c; tax 1c.
Azorea French Talcum Powder, 21c; tax 1c.
Derkiss French Talcum, 21c; tax 1c.
Un Air Embaume Talcum, usually 75c, special 60c; tax 3c.
Houbigant's Quelques Fleurs, Ideal and Cour de Jeanette French Talcum, 90c; tax 4c.
Hind's Honey and Almond Cream, 35c bottle; tax 2c.
Febeco or Pepsodent Tooth Paste, 35c; tax 2c.
Japonica Olive Oil Castile Soap, very special, 75c a dozen cakes.
Leco Standard or Baby Castile Soap, imported, usually 20c; 2 cakes, 25c.
Cuticura or Woodbury's Facial Soap, 19c cake.
Roger & Gallet Lettuce Soap, usually 30c cake, 20c; box of 4 cakes, \$1.15.
Oodoron, the well-known deodorant, 35c size—24c; tax 1c.
Azorea or Floramyne Sachet Powder, 67c; tax 3c.
Cutex Liquid Nail Polish or Cuticle Remover, 35c size at 21c; tax 1c.
Cutex Compact Nail Set, 60c size at 48c; tax 2c.

Special Values in Standard Notions

D. M. C. French Mercerized Spool Cotton for hand or machine sewing; black or white, only made in one size, 55c dozen.
Standard Makes of Spool Silk; 500 shades, usually 18c, at 2 spools for 25c.
D. M. C. Crochet Cotton; all sizes; in white or ecru, usually 30c ball, at 25c. It is important to note that D. M. C. Crochet Cotton averages 2 1/2 times as many yards to the ball as the inferior kinds.
Barbour's Linen Thread, all sizes, white or black, special, 25c spool.
Delong's Atlas Brand Toilet Pins, 5c paper; 6 for 25c.
Pink Paper English Pins, 20c value, 10c.
Puritan Dressmaker Pins, 1/2-lb. boxes; sizes 4-5 only, 45c box, 15c, at 10c.
Enameled Coat Hangers in pink, blue, white, lavender, yellow and green, usually 15c, at 10c.
"Wright's" Bias Folds of fine cambric, 10c piece; 3 for 25c.
10-Yd. Roll of Superior Twill Tape, usually 20c, at 10c piece; 3 for 25c.
Clare Guaranteed Dress Shields, sizes 2, 3 and 4, usually 25c, at 20c pair; \$2.25 dozen.
English Hair Pins, assorted, invisible sizes at 12c box.
Lee's Hospital Cotton, made by Johnson & Johnson, 1-lb. size, special, 50c lb.