

SUNDAY LAWS SAFE UNDER REVISION

Church Folks' Fears About New Constitution Groundless, Says Former Judge Gordon

BASED ON MISTAKEN POINT

Reports that have roused church people to oppose the proposed new Constitution on the ground it contains a clause which will abolish existing laws regarding the observance of the Sabbath, are false, according to ex-Judge James G. Gordon.

Mr. Gordon's opinion is as follows: "Respecting the point that the giving of home rule to cities, in the event of a new Constitution being adopted, might enable the cities to override the so-called Blue Laws, I am very glad to state in my opinion this is clearly wrong in its legal conclusion."

"The Blue Laws were passed by the Legislature in the exercise of the sovereign police power of the State. No municipality could override them and no municipal ordinance could nullify them in any respect whatever. The Legislature alone can repeal, alter or amend them. No one need have any anxiety on this point."

P. O. S. of A. Statement The Pennsylvania State Camp, Patriotic Order Sons of America, has issued a statement saying that the organization, representing 135,000 citizens and their families of Pennsylvania, went on record at their annual convention, August 24 to 26, in Lancaster, as opposed to the holding of a Constitutional Convention, and urged their members to work and vote against the same.

"There may be some parts of the Constitution that need changing, but the statement continues, 'but Article 18, of the present Constitution, contains ample provision for any amendment required. The Constitution has already been amended twenty-one times under this article. The Constitution of the United States has been amended nineteen times, and yet it has never been suggested that we get a new Constitution of the United States; indeed, the people would fight against the very proposal.'

"The literature published by those in favor of the Constitutional Convention advances but few arguments of a special nature in favor of such a radical step, but the State Executive Committee of the P. O. S. of A. heretofore submit to the people their objections in detail."

"We are opposed to having our fundamental American principles changed. We are opposed to sectarian appropriations to any church or society, regardless of whether it be Catholic, Jew or Protestant."

"We are opposed to radical changes in the public school system, and feel after being organized for seventy-five years in defense of that system, and working all the time in its defense, also being educated therein, that we are in better position to speak for it than many who favor this Constitutional Convention."

"We believe that ample amendment power now exists. Why should people be asked to vote for a whole new Constitution when items therein may not suit the average voter? Amendment is the only practical way."

"We believe, with business conditions as bad as they are, that it would be a willful waste of the public money to attempt this great expense at this time."

"We cannot believe that the Constitution could be lawfully amended by a convention, but only as prescribed therein."

"We are opposed to the balance of power in the convention being placed in the hands of any one aside from the voters."

"We are opposed to a Continental Sunday, and we fear that it is the aim of those who favor it to so change the Constitution to suit their purpose."

"We don't want a convention where votes can be traded to get objectionable sections adopted."

"We insist that it is the right of the people to vote on each suggested change separately."

3 GRADE-CROSSING VICTIMS INTERRED

Mrs. Schrader's Death Followed Husband's by Three Weeks—Officials at Odds

CORONER'S PROBE DELAYED

Lansdale, Pa., Sept. 15.—Mrs. Esther Schrader, who was killed with two Phoenixville residents on Saturday, when a trolley car crashed into an automobile in which she was a passenger, was buried at Lansdale Tuesday.

The tragedy is the more pathetic because George Schrader, husband of the Lansdale victim, died just three weeks ago, after being an invalid since 1918. He contracted the influenza a few weeks after he was married, developing complications, and his wife was his nurse up to the time of his death.

As an outcome of the tragedy, Coroner William Neville, of Montgomery County, and County Registrar White, of Norristown, are at loggerheads. Coroner Neville says he was not officially notified of the accident until Monday and, as a result, the Coroner did not commence an investigation, and the bodies were not released until Monday night. The driver of the automobile, Charles Miller, declares that the crossing watchman waved a white flag instead of a red one as he approached.

Unionists in Porto Rico Approve Torres' Stand for Governor San Juan, Porto Rico, Sept. 15.—The central board of the Unionist Party, which is in power, has given a vote of confidence to Jose G. Torres, acting head of the party, following the endorsement of Governor E. Mont Rely, who on August 17 reaffirmed his opposition to any move for Porto Rican independence, originally expressed in his inaugural address.

There was one dissenting vote, that of Casentano Sol y Cuchi, an advocate of independence. The Unionist Party, which previously stood for the independence of Porto Rico, thus has completely reversed its policy.

EVEN DIVORCE COST IS CUT

Sweeping Reduction in Gary Affects Everything Purchasable Gary, Ind., Sept. 15.—A general reduction in prices ranging from house rents to costs of a divorce is in effect in Gary yesterday. The cuts follow closely the big reduction in wages of steel workers.

Lower prices were recorded in restaurants, house rents, clothing, etc. Physicians reduced their call charges to \$2 and attorneys announced a cut of from \$100 to \$50 for handling divorce cases.

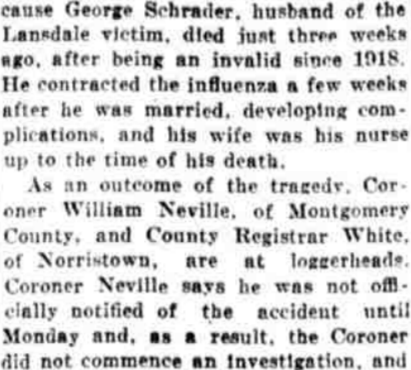
Primitive Methodists Elect Hazleton, Pa., Sept. 15.—The quadrennial convocation of the Primitive Methodist Church of the United States elected the following officers at its opening session yesterday: President, the Rev. N. W. Matthews, of Lowell, Mass.; Vice President, G. J. Jeffries, of Bangor, Pa.; Secretary, the Rev. C. W. Kershaw, of New Bedford, Mass.; Assistant Secretary, Thomas Breinely, of Fall River, Mass.

LITTLE BENNY'S NOTE BOOK

By Lee Page

ONE LITTLE BLEMISH

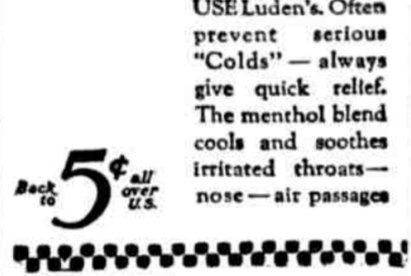
Will Mar Your Beauty No matter how perfect the features or how prettily groomed, if your complexion is marred by a pimple or ugly blemish, you cannot possess complete beauty.



Little facial blemishes can be easily removed by the use of Black and White Beauty Bleach.

This delightful fresh-tinted cream forms an invisible coating which will clear the skin of tan, freckles, pimples, unsightly blotches, liver spots and similar blemishes.

Black and White Soap should be used in connection with Beauty Bleach. It is a pure soap and a delightful aid in keeping the skin clear, soft and youthful.



AMERICAN STORES CO. AMERICAN

Startling Facts and Figures

To give you an idea of the magnitude of our business and our ability to serve the public, the following facts and figures will be interesting—almost startling:

It requires a herd of more than one hundred thousand cows, milked twice daily, to furnish enough of the rich milk from the cream of which our butter supplies are obtained. Two million hens and over are required to fill our egg requirements.

The daily potato consumption of Philadelphia is about 20 cars—yet in one week recently we distributed 77 carloads of potatoes! And shortly previous to that, we sold over our counters in a single week 103 carloads.

As another example of our immense output, the weekly capacity of our three big daylight bakeries is more than two million loaves, requiring, in a year, the wheat production of close to one hundred thousand acres!

Facts are stubborn things and cannot be gainsaid; from the foregoing it is easy to see where the majority of the housewives throughout the zone where our Stores are located are buying their table needs.

We treasure above everything the goodwill of our customers. Today, as from the birth of our business, every item in our stocks is selected under the policy that "Quality Counts," and sold on the basis that in an Asco Store your money goes the farthest.

Best Gran. Sugar lb 6c This price special for 3 days. Liberal supplies for our customers—positively none sold to dealers.

Richland Butter lb 48c: Pure creamery prints. Big value. Best Pure Lard 12 1/2c: Another rare value you should not miss!

Calif. Lima Beans 8c This price special for the balance of the week—buy freely.

Here's an Opportunity! For this week we are running Special Prices in dozen lots on our high quality canned Vegetables and Fruits. The wise housewives are stocking up.

Choice Tomatoes can 10c; doz \$1.15 Fancy Tomatoes " 14c; " \$1.65 Tender Peas " 12 1/2c; " \$1.45 Asco Sifted Peas " 19c; " \$2.25 Asco Extra Sifted Peas " 25c; " \$2.85 Sweet Corn " 7c; " 75c Tender Crushed Corn " 10c; " \$1.15 Asco Shoe-Peg Corn " 14c; " \$1.65 Asco Maine Corn " 16c; " \$1.85 Haw. Grated Pineapple " 11c; " \$1.25 Haw. Sliced Pineapple " 23c; " \$2.70 Haw. Sliced Pineapple " 29c; " \$3.40 Fancy Calif. Peaches " 29c; " \$3.40 Fancy Calif. Cherries " 28c; " \$3.30 Fancy Calif. Cherries " 35c; " \$4.10 Fancy Calif. Apricots " 15c; " \$1.75 Fancy Calif. Apricots " 29c; " \$3.40 Fancy Calif. Plums " 25c; " \$2.90

Best Pure Catsup 9c 3 for 25c Made from red ripe tomatoes. Reg. 10c bottles.

The First Cup ASCO Coffee lb 25c You drink of the delicious Asco Coffee will convince you that it is the equal of other coffees selling for almost DOUBLE the price. It's good to the last drop.

Calif. Sunsweet Prunes Another prize in our bag of bargain (Reg. 17c Prunes cut to 15c lb.)

ASCO Teas 1/2-lb pkgs 12c 1/2 lb pkgs. 23c; lb. 45c There's a charm and fragrance in every leaf of these excellent teas. Five different blends. Orange Pekoe India Ceylon Plain Black Old Country Style Mixed

Good Things From Father Neptune's Cupboard Best Pink Salmon... tall can 11c Red Alaska Salmon... can 25c Calif. Tuna Fish... can 10c, 15c Gorton's Codfish Cakes... big can 18c Baby Norway Mackerel... 3 for 10c Choice Sardines... can 4c

For Your Sweet Tooth Lemon Drops... lb 29c Cream Mints... lb 25c Hershey's Chocolate Bells... 1/2 lb 25c

An Acknowledgment Our old customers and friends in the neighborhood of 19th and Market Sts. were quick to appreciate the advantages of our Big, New, Combination Grocery Store and Meat Market Just Opened at 14 N. 19th St.

Each One a Master Our bakers know that we have set a high standard of quality for Victor Bread and every loaf must come up to it. These Master Bakers of ours take a genuine pride in producing such good wholesome bread.

Victor Bread Big Loaf 6c "Plants roses in children's cheeks." These Prices Effective in All Our Philadelphia, Camden and Suburban Grocery Stores

AMERICAN STORES CO. AMERICAN

Another Cut in the Price of Beef, Lamb and Poultry

In All Our 196 Sanitary Meat Markets The figures below will show you how much prices have dropped in our Meat Markets in the past year. We are in direct touch with the producers and are therefore able to give our customers the benefit of all market changes.

To give you a concrete idea of the tremendous output in our 196 Sanitary Meat Markets, we mention the quantities required in just three lines for this week's selling:

600 Corn-fattened Cattle 3500 Tender Spring Lambs 7500 Milk-fed Chickens

The above are in addition to the large quantities of other meats we sell, such as Pork and Pork Products, Fresh and Smoked Hams, etc., etc. These cattle, lambs and chickens were carefully selected out of herds and flocks of thousands and shipped here and killed under Government supervision, then delivered direct to our Stores. That is why our Markets enjoy such an enviable reputation for sweet, fresh meats.

We would never be able to sell such tremendous quantities of meats if our Markets did not have a QUALITY reputation, and the prices below prove indisputably that— "It costs less to live when you deal at the Asco Meat Markets"

Corn-fattened Cattle 25c lb Lower Rump or Round Steak lb 25c Price Today One Year Ago lb 50c 23c lb Lower Finest Cuts Sirloin Steak lb 32c lb 55c 12c lb Lower Thick End Rib Roast lb 18c lb 30c 14c lb Lower Standing Rib Roast lb 28c lb 42c 10c lb Lower Little Pig Roasting Hams lb 25c lb 35c

Genuine Spring Lambs Breast of Lamb... lb 7c Loin Chops... lb 35c Rib Chops... lb 30c Lamb Hearts... 5c Legs of Lamb lb 28c Rack... lb 23c Shoulders... lb 20c Neck... lb 12c Lambs' Liver... lb 20c

10c lb Lower Fresh Killed Milk-fed Chickens lb 35c Stewing, Frying, Broiling, Roasting Last Year lb 45c Sliced Lebanon Bologna 1/2 lb 13c Whole pieces, lb 22c Cooked Corned Beef 1/4 lb 5c 1-lb pieces, 19c

These prices effective in all our Meat Markets

PLANS for your new home, factory or industrial project. SURVEYS of your property for deeds, partition or contemplated improvements. D. C. FINSTON, Civil Engineer, 2520 Chestnut St., Tel. Locust 1781

HOUSES WIRED VERY REASONABLY. Visit our showrooms. RELIANCE GAS & ELEC. FIXTURE CO., 1511 Arch St.

STACKHOUSE & RAPP Practical Carpet Layers Carpets taken up, cleaned, altered and refitted. Linoleum laid and cemented. Canvas for porch floors. Bell, Spruce 0985 1820 Cherry St.

25% REDUCTION ON PICTURE FRAMES. Expert Workmanship and Courteous Service has always been our policy. Phone, call or write and our representatives will come to your home. Paintings restored and frames resilded by our expert artist. Eastern Art Company 122 N. 19th St. Locust 5428

STAMMERING A New Departure Normal, Subnormal, Corrective and Co-operative Classes now being formed for all seasons. Class or private instruction. THE KINGLEY FOUNDATION "More Than a School" Call, Phone Bittenhouse 266, or Write House 10, A. P. H. Monday, Wednesday and Friday 148 About the Kingley Club, 512 STEPHEN GIRARD BLDG. 21 S. 15th Street

INTERIOR DECORATING 12-Week Course Commencing Week of Oct. 3 Practical, intensive instruction in this new line of work for women, leading to unusual opportunities. Of special interest to home-makers, training them to furnish and decorate their own homes without the high cost of professional advice. (Terms moderate)

Central Bldg. North Bldg. West Bldg. 1421 Arch St. 1913 Lehigh Av. 823 & Sanson THE Y. M. C. A. OF PHILADELPHIA

Bourne Trucks 2 ton. Some with Cabs. \$500 to \$700. Dodge Truck 1-ton open express body. Turbino Rear. \$700. Very good. Ford Panel Body Express 12 1/2. Very good condition. \$250. Pierce-Arrow Service Car Very good engine and chassis. \$175. Ford Roadster Just painted. Good condition. \$150. It will pay to inspect these before buying them.

THE ATLANTIC REFINING COMPANY 2144 Passunk Ave.