

Store Hours, 9 to 5

For Wednesday

Tomorrow Is Subway Store Day

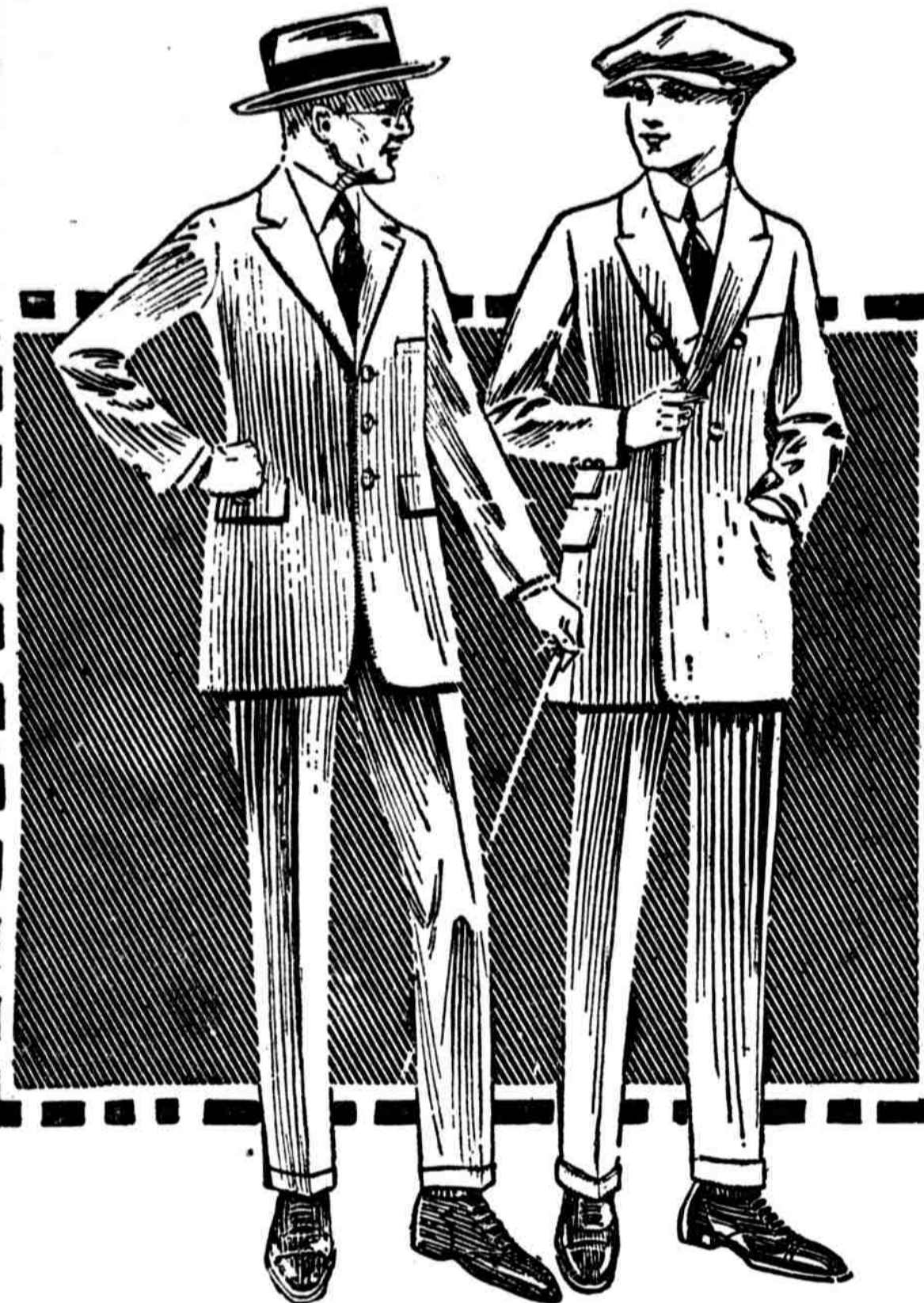
GIMBEL BROTHERS
MARKET · CHESTNUT · EIGHTH · NINTH

Tomorrow Is Subway Store Day

For Wednesday

Subway Store Sale of 4200 Men's Suits } \$20

Average Half Price and Less



Manufacturers Sacrifice to Lessen Stocks and to Meet Bank Obligations

Ready money!---that was the wizard wand that brought bargains --- that enabled banks to release the hundreds of suits that, with others, totaled 4200 suits for this sale.

232 Suits in Weights and Colorings for Now 2320 Suits in Weights for All Year
628 Suits in Weights and Colorings for Fall 1020 Suits Are Heavy Winter Suits

Every Desirable Coloring. Herringbones, Pencil Stripes

Every Suit is All-Wool, All at \$20

Winter-Weight Suits with Extra Trousers } \$20
Blue Serge
also
Smooth Velour Cassimeres

Single and Double breasted. For men and young men. Pure Worsted Blue Serge, Smooth Velour Cassimeres in plain blues, browns, and grays; also neat stripes.

Double- and single-breasted. Models for young men and older men of every size and build.

Serges—Worsted, plain and fancy—Smooth Velours—Cassimeres—Tweeds—Cheviots.

Lot 1—\$20
Young Men's Suits

Herringbones, velours, cassimeres, worsteds and cheviots. Pencil stripes or plain worsteds, in blue, brown, olive or black.

Double and single-breasted. Also sports models.

Lot 2—\$20
Business Men's Suits

For men who stay young and early middle aged men of affairs.

Conservative colorings and patterns. Plain and quiet stripes and weaves. In browns, grays, rich olives.

Lot 3—\$20
Older and Large Men

Smooth velour cassimeres, smooth worsteds and silk mixtures.

Medium and dark grays, blues, dark browns. Plain and in neat patterns and quiet stripes.

—Gimbels, Subway Store.

Tomorrow Will Be Subway Store Day—Important Savings for Everywoman's Purse

<p>5000 Bleached Seamless Sheets, 78c</p> <p>Double-bed size, "seconds," worth double if firsts. Pillow Cases, half price at 25c. Dependable quality, plain or hemstitched, 45x36 inches. 75c Bolster Cases, at 39c. 42x72 inches. Satin-finished Marseilles Bedspreads, \$2.88.</p>	<p>Waldorf Toilet Paper 12 Rolls for \$1</p> <p>650 sheets in a roll. Regularly \$1.25.</p>	<p>Women's Extra-Size Nightgowns at 85c</p> <p>Of nainsook, embroidery trimmed or tailored style with embroidery. Cut full and roomy.</p>	<p>John J. Clark's Spool Cotton } 60c</p> <p>6-cord. White or black.</p>	<p>Women's Knit Union Suits— 48c</p> <p>Regular and extra sizes. Low neck, sleeveless, tight and loose knee. Wonderful value at 48c.</p>	<p>Men's Neglige } 48c Shirts</p> <p>Factory-soiled and damaged by water. Madras, silk-and-cotton, percale and cheviot. Sold "as is." No mail or phone orders.</p>	<p>28c New Dress Gingham 20c yd.</p> <p>32 inches wide. Popular plaids. Excellent value.</p>	<p>5000 Pairs of Women's and Children's Low Shoes \$1</p> <p>White—plain pumps, buckle pumps and oxfords. Black—patent leather pumps and oxfords. Sizes 2½ to 7. Men's Black and Tan Low Shoes at \$2.95</p>	
<p>All Net Guimpes, \$1.25</p> <p>Pinafore collars, sleeves are lace-trimmed. White and ecru. Unusual values.</p>	<p>House Dresses \$1 Values 1 \$1.85 to \$5.95</p> <p>Voiles, Lawns. Some gingham. Mostly 36, 38 and 40 sizes, but a few larger sizes.</p>	<p>Net Guimpe Blouses, \$1</p> <p>Regularly \$2. Lace-trimmed. All have Peter Pan collar. Sizes 34 to 46.</p>	<p>31-Pc. Dinner Sets Worth \$5.95, Tomorrow at \$2.50</p> <p>Just 750 Sets in the Lot</p> <p>All pieces have a neat border design—choice of three attractive patterns. The best and lowest value we've been able to offer for many a day. At \$2.50. No Mail Orders. No Cracks or Chips</p>	<p>Used Sewing Machines at \$15 and \$18</p> <p>Singer, Domestic, Wheeler & Wilson, New Home and Lesing makes. Also brand new Sewing Machines as low as \$32.50. Pay \$1 Weekly</p>	<p>Fancy Turkish Bath Towels at 35c, 45c and 65c</p> <p>Slight seconds, nothing to hurt the service. Mercerized Table Damask. 68-inch; regularly 60c; 42c 7d. tomorrow</p>	<p>Little Children's Muslin Underwear—25c to \$1</p> <p>Drawers, Princess Slips, Petticoats, Drawer-Waists and Combination Waist and Drawers. Ages 2 to 14. Half price at 25c to \$1.</p>	<p>Drapery Silkline 12c yd. Value 18c</p> <p>36-inch. Beautiful tapestry and floral designs in rich colorings.</p>	<p>\$2 to \$3 Corsets—\$1.65</p> <p>G. B. Corsets included. Brocade and coutil materials; models for every figure.</p>
<p>High-pile Axminster Rugs 9x12 ft. at \$27.50; Reg. \$34.50 8.3x10 ft. at \$25; Reg. \$31.50</p> <p>The choice of pleasing Oriental patterns is large. And beautiful colorings. All are absolutely perfect and guaranteed. Fine values.</p>	<p>Combination Bed Outfits at \$20</p> <p>Bedstead, link-spring and roll-edge cotton mattress.</p>	<p>Women's Gloves at 28c to 68c</p>	<p>Three-Pc. Saucepan Sets at 95c</p> <p>Consisting of 1, 1½- and 2-qt. sizes; heavy quality aluminum, riveted handles; value \$1.50, at 95c.</p>	<p>Women's and Misses' All-Wool Sweaters—\$3.95</p> <p>Regularly \$4.95. Various styles and colors. Sizes 36 to 46.</p>	<p>New Fall Satin Charmeuse, \$1.78 yd.</p> <p>In seventeen leading shades. 36 inches wide.</p>	<p>Women's Hand Bags and Purses \$1</p> <p>at.....</p> <p>Leather and silk and other good materials. Various colors and styles.</p>	<p>Boys' Extra Trousers Suits at \$6.50</p> <p>For School Wear</p> <p>We could wholesale them for more than this price. Sizes 7 to 17 years. Excellent fabrics and clean-cut styles. Choice colors, too. Great value at \$6.50.</p>	
<p>Cup o' Comfort Coffee, 4 lbs. for 78c</p> <p>Dry roast. 500 lbs. sample Mixed Tea, at 3 lbs. for 85c. 500 lbs. Purity Cocoa, fresh ground, at 3 lbs. for 65c.</p>	<p>Mercerized Poplin 25c yd. Reg. 38c</p> <p>White, 36 inches wide. Excellent grade.</p>	<p>New Plaids at 75c yd.</p>	<p>Pinafore Aprons, 38c</p> <p>Plaids and checked gingham.</p>	<p>Women's Hand Bags and Purses \$1</p> <p>at.....</p> <p>Leather and silk and other good materials. Various colors and styles.</p>	<p>Surf Cloth for Bathing Suits, at 48c yd.</p> <p>36-inch. Black only.</p>	<p>Boys' Extra Trousers Suits at \$6.50</p> <p>For School Wear</p> <p>We could wholesale them for more than this price. Sizes 7 to 17 years. Excellent fabrics and clean-cut styles. Choice colors, too. Great value at \$6.50.</p>		

Imagine a Whole Dress—Either Women's or Misses'—For 50c!

Three Hundred and Fifty Reduced For "Subway Store Day"—Were \$2 to \$3

Linens and plaid and check gingham and figured voiles—some may need freshening, but a whole dress for 50¢! And such pretty styles.



<p>410 Dresses Reduced to \$1</p> <p>Were \$3 to \$5</p> <p>Mostly gingham and voiles—Plenty of the popular sleeveless dresses included.</p>	<p>260 Dresses Reduced to \$1.50</p> <p>Were \$3.50 to \$6.50</p> <p>Mostly gingham, checks, plaids, plain chambray; colors and stripes.</p>	<p>320 Dresses Reduced to \$2</p> <p>Were \$5 to \$7</p> <p>Mostly gingham—perfectly splendid gingham—and guimpe dresses of linen, the "guimpes" regular waists, and detachable for sport wear.</p>
<p>385 Dresses Reduced to \$3</p> <p>Were \$6 to \$8.50</p> <p>Gingham—voiles—beautifully embroidered; organza—foulard—voiles—mostly in dark blue colorings. And guimpe dresses of gingham.</p>	<p>480 Dresses Reduced to \$5</p> <p>Were \$8.50 to \$15</p> <p>Organza, Voiles, Linens, Dotted Swisses. And Tricolettes with flowered Georgette bodices.</p>	



—Gimbels, Subway Store.