

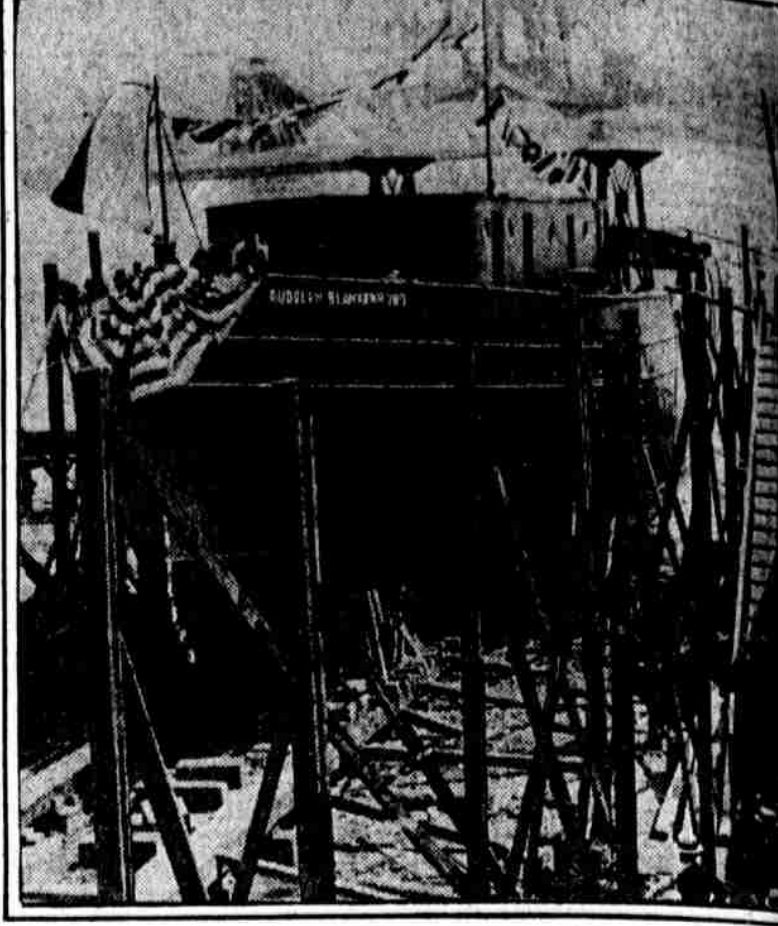
ON THE ROCKS. The steamship Athlon, carrying passengers, during a fog crashed into the rocks at Port Ludlow, Puget Sound, Washington, several days ago. Heroic work by the crew got all passengers to places of safety. The boat is shown at low tide at the scene of the crash. International



SHIMIDZU, the famous Japanese tennis player, in action at Newport. He plays many matches in the U. S. before his return to Japan. C. N. P.



LAUNCH NEW POLICE BOAT. The Rudolph Blankenburg, soon to be a part of the Philadelphia Police Department equipment and named in honor of the late Mayor, was launched yesterday at Elizabethport, N. J., with Mrs. Blankenburg as sponsor. At the left the sponsor is being greeted by Mayor Marlag, of Elizabethport. L. P. S.



GEORGES CARPENTIER, conquered by Jack Dempsey, on board the La Savoie at Havre, France, with Mrs. Carpentier and their dog. Wide World Photo



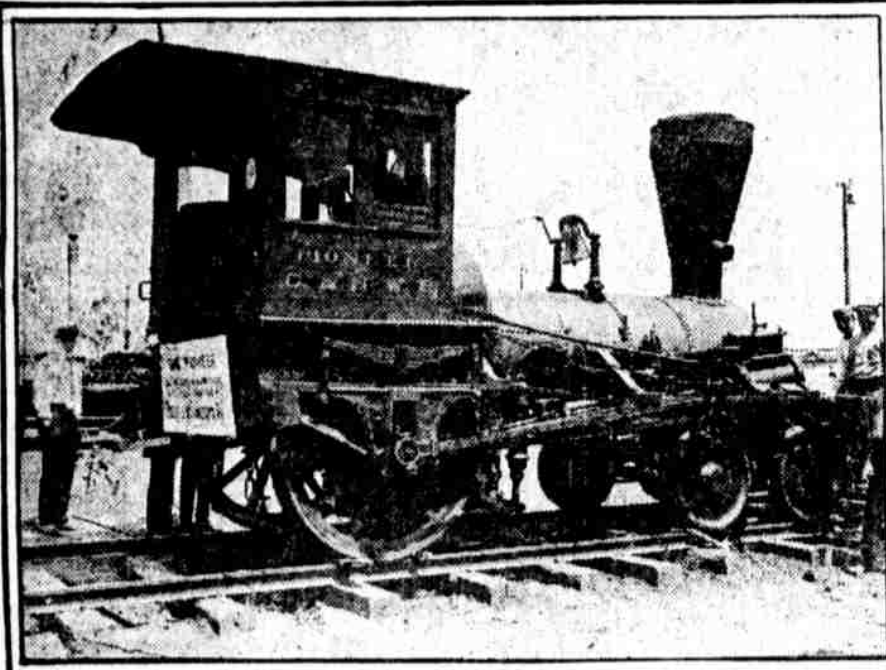
SERVING THE FIRST ONE. Mrs. Lloyd George, wife of the British Premier, at the opening of St. George's Hill Lawn Tennis Club. C. N. P.



PRINCE OF WALES AT POLO. The Prince is the player at the top of the etching. He was snapped during the match between Hurlingham and Belcaire. Central News Photo



JOY FOR THE CHILDREN. Open-air shower bath, a wading pool and a shuffleboard are just part of the excellent equipment of the playground at the Friends' Neighborhood Guild, Fourth and Green streets. Bill Schwemle is using a scrubbing brush on Isadore Angler. The shuffleboard player is Florence Krupp. Ledger Photo Service



"THE PIONEER," Chicago's first locomotive, is now on exhibition at the Pageant of Progress in the Illinois city. The engine ran out of Chicago in October, 1848. It was built in Philadelphia. International



EDGAR W. LANK talks on political organization in interview on Editorial Page. Ledger Photo Service



SERVING DINNER. An attendant in the home of real super-rats of the Wistar Institute, Thirty-sixth street and Woodland avenue, dishes out the good things that the rodents thrive on. Ledger Photo Service

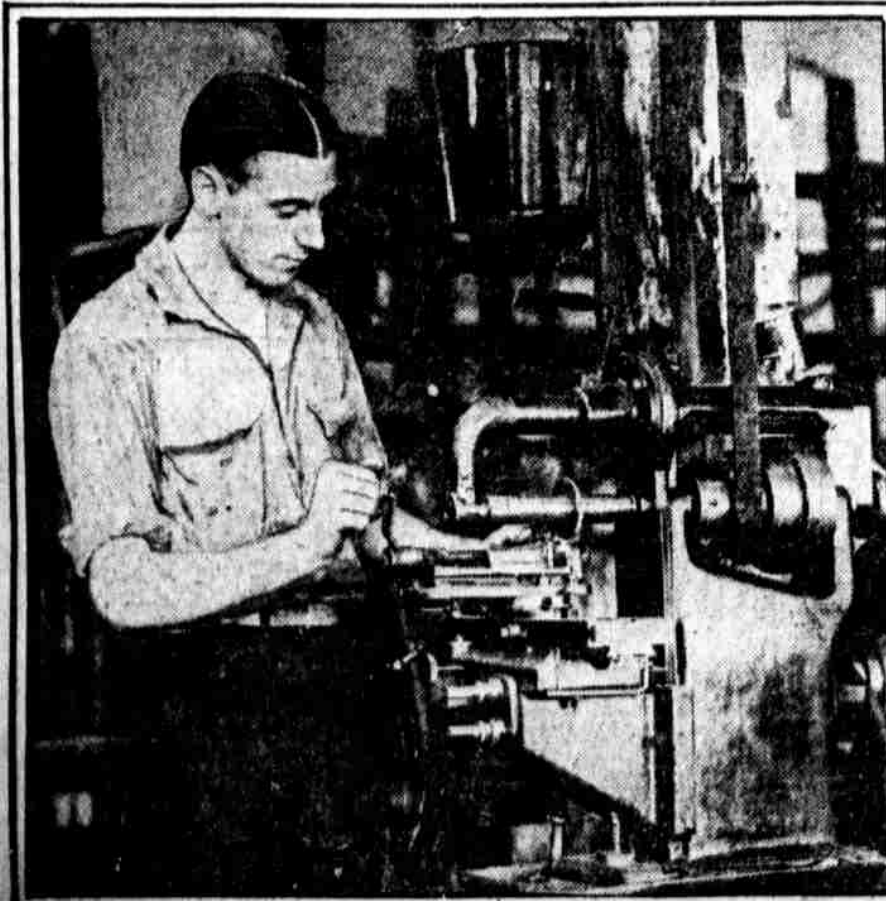


MRS. PENEHERRA, of the Ecuador Legation, Washington, spending summer months at Asbury Park, N. J. L. P. S.



ON THE ROTARY "CHOO-CHOO." Children ready to start from Camden for Ocean City, the guests of Philadelphia Rotarians. Ledger Photo Service

OUR CITY'S WORKERS AND WHAT THEY DO



LEO WOOD, 1228 South Fifty-first street, operating a milling machine in the plant of the Mitchell Specialty Company, 3831 North Broad street. He mills saws at the rate of 2000 a day. Ledger Photo Service



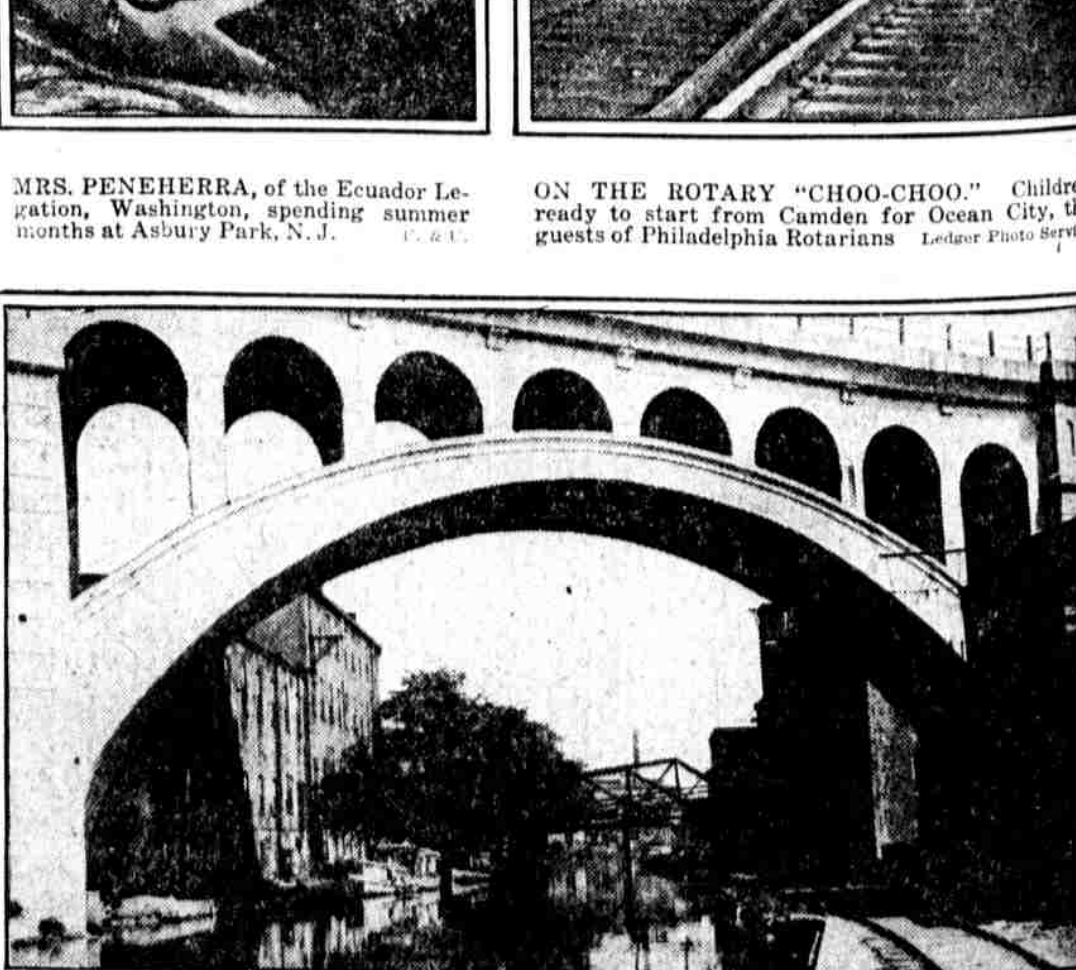
SEEN IN ATLANTIC CITY. Mrs. George L. Mesker, of New York, carried a paper Japanese umbrella. Note the seashell dress at the right. Ledger Photo Service



JOHN W. DICK, 2839 North Marvine street, in U. S. service fourteen years. Route: Sanson to Walnut, Seventh to Eleventh street. L. P. S.



UP MANAYUNK WAY. The photographer pointed his camera through an archway of the bridge on the Schuylkill division of the Pennsylvania Railroad that spans the Manayunk canal. He was looking toward City Hall. Ledger Photo Service



UP MANAYUNK WAY. The photographer pointed his camera through an archway of the bridge on the Schuylkill division of the Pennsylvania Railroad that spans the Manayunk canal. He was looking toward City Hall. Ledger Photo Service