

For Wednesday

Store Hours, 9 to 5—Closed Saturday  
It's all Gimbels—one in dependability; one in resolute purpose to serve. The Subway Store's less costly goods have some place in every home.

**GIMBEL BROTHERS**  
MARKET · CHESTNUT · EIGHTH · NINTH

Subway Store has been a club to kill high prices—and the club is still in good shape.

Tuesday, July 5, 1921  
For Wednesday

# Wednesday is Subway Store Day at Gimbels

Real Hair Nets, 50c doz.  
Cap or fringe, Reg. 75c.  
Darning Cotton, 38c doz.  
—Gimbels, "Subway Store Day"

**\$1.25 All-wool Navy Blue Serge—95c yd.**  
54 inches wide.  
—Gimbels, "Subway Store Day"

**Nougat Candy—35c lb.**  
Assorted flavors. Regularly 50c.  
—Gimbels, "Subway Store Day"

**36-inch Longcloth—10c a yd.**  
"Mill ends" of 20c quality.  
White Madras Shirting, 36-inch, at 15c a yard.  
—Gimbels, "Subway Store Day"

**Beautiful, Soft Crepe de Chine—\$1.18 a yd.**  
—A Special Feature

The kind you'll want your vacation dresses and blouses to be made of. 4000 yards in the lot. Good width—40 inches. In practically all the shades under the sun—

White, Ivory, Shell-pink, Light Blue, Old Rose, Orchid, Steel, Tobacco, Seal Brown, Black, Navy, Midnight Blue, Pink, Nickel, Maroon, Blue.

At \$1.18 a yd. Remarkable value.  
—Gimbels, "Subway Store Day"

## Money-Saving—That's What it Means—Very Great Money-Saving

Did you ever realize this? The only rich men in the country are those who bought bargains. Think it over—count to their credit large ability and whatever you will. They picked winners—in buying stocks, and bonds or oil wells or mines, or in men to help them. The one who spends the household funds—and does it well—is quite a full partner in the family's success.

**Women's All-Wool Sweaters at \$4.95**

Were \$5.95  
Tuxedo or part tuxedo models; trimmed with brushed wool, cross belts, block weave below waist line, newest model; black and white, navy and white and honeydew. Sizes 36 to 46. Exceptional value at \$4.95. You'll need one for boardwalk wear.  
—Gimbels, "Subway Store Day"

**Nightgowns and Envelope Chemises at 85c each**

Values \$1.25 and \$1.50  
Pretty lace and embroidered nainsook and cambric batiste in pink and lavender.  
600 White Saten Petticoats, at 85c. Value \$1.25.  
Fitted top and tailored flounce.  
—Gimbels, "Subway Store Day"

**Clearance of House Dresses, \$1.35**

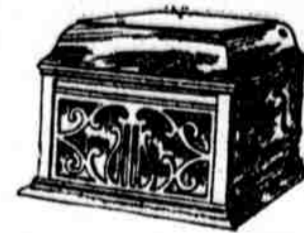
Values \$2.50 to \$3.95  
Ginghams and percales in stripes and plaids, belted and straight-line models, all sizes; but not in all styles. Mostly L'Aiglon make. At \$1.35.  
—Gimbels, "Subway Store Day"

**1200 Pairs Corsets, 95c and \$1.35**

Models for Slender, Average and Fuller Types  
Graduated front steel. Two models—both of white coutil, at 95c. Other High Grade Corsets at \$1.35. Values \$2 and \$2.50. One topless model of pink coutil, elastic band through waist line; also a model in white coutil for larger figure type. At \$1.35.  
—Gimbels, "Subway Store Day"

**Full-Sized Mahogany Talking Machines \$27**

As Pictured—Height, 14 in. Width, 17 1/2 in. Depth, 20 in.



Double-Spring Motor Domestic Tone Arm and Sound Box Cabinet is French Polished

An inexpensive yet a high-grade talking machine in every respect at less than half the regular price. Take one to your summer cottage or enjoy its clear, "sweet" tone on that canoeing trip. Its price is remarkably low—\$27. And easy payments.  
—Gimbels, "Subway Store Day"

# 1000 Girls' \$2 to \$5 Tub-Dresses at \$1

About fifty styles—fifty of the cutest styles of the summer. Ginghams in smart plaids. Plain lineens (cotton) and chambrays in lovely soft colorings. And lovely figured voiles. Slashed styles—the slashings bound with color. Sashed styles. Ruffled pockets. And patch pockets. Odd collars. And cool, collarless models. 6- to 16-year sizes in the lot.



**\$3.50 to \$5 Organdies at \$1.85**

Three ruffled styles—each in sizes 6 to 14. And the very sweetest colors you see on Atlantic City's Boardwalk—maize, green, orchid, pink, coral, blue.

**Women's and Misses' \$5 to \$16.50 Dresses at \$3, \$5 and \$9.75**

Ginghams—in the fashionable checks. Voiles—in the fashionable foulard printings. Organdies—in white, honeydew, pink, blue, brown, rose, coral, tomato and carrot. Misses' sizes: 16 and 18. Women's sizes: 36 to 44.

**Women's \$1.50 White Tub-Skirts at \$1**  
Gabardine. And extra sizes, as well as regular sizes.

**\$2 to \$5 Bathing Suits at \$1 to \$2**  
Knit suits. And surf satins (cotton). Women's and misses' sizes.



Voile, \$1 Value \$5 Sizes 6 to 16  
Organdie, \$1.85 Value \$3 Sizes 6 to 14  
—Gimbels, "Subway Store Day"

**Little Children's Dresses \$1**

Check ginghams and plain-color chambrays, empire and straight-line models. 2 to 6 years, at \$1. Babies' Dresses, short and long, lace- and embroidery-trimmed, low necks and short sleeves. 6 months, 1 and 2 years. One topless model of pink coutil, elastic band through waist line; also a model in white coutil for larger figure type. At \$1.35.  
—Gimbels, "Subway Store Day"

**Linen-Dress Gingham at 12 1/2c a yd.**

A wonderful variety of patterns to choose from. At the above price this gingham is less than wholesale—but for Subway Store Day only. At 12 1/2c yd.  
—Gimbels, "Subway Store Day"

**One Thousand Women's Lingerie Blouses**  
And Five Hundred Silk Waists  
**\$1 Were \$2 and \$2.95**

Most wonderful values the Subway Waist Shop has ever seen. Everyone a "gem." Striped Jap Silk Blouses. Silk Pongee. Black Taffeta. About 20 styles in the lot—all stylish. And beautiful Lingerie Blouses in all white and summer shades. All sizes but not every size in each style. Newest models—long and short sleeves. All at \$1.  
—Gimbels, "Subway Store Day"

**48-Pc. Gold-and-White Cottage Sets \$4.95**

Save \$3 on each Set  
Manufacturers' imperfections, but nothing to hurt their service. Each set consists of:—  
6 Bread and Butter Plates. 1 Casserole.  
6 Tea Plates. 1 Vegetable Dish.  
6 Dessert Plates. 1 Sauce Boat.  
6 Fruit Saucers. 1 Pickle Dish.  
6 Cup Saucers. 1 Ten-inch Dish.  
6 Soup Plates. 48 pieces. 6 Soup Plates. 48 pieces.  
**A Limited Lot of Incomplete Cereal Sets at Great Reductions**  
Imported sets which have had pieces broken which we cannot replace.  
7 pcs. to 14 pcs. at a fraction of their worth.  
Cereals, spices, salts, etc., at \$2.50 to \$4.75 set.  
Worth \$1.75 to \$10.95  
**A Limited Lot of Odd Dinnerware at Clean-up Prices**  
Odd pieces, short lots. Various 5c to \$1, values 10c to \$3. Plates, cups and saucers, meat dishes, vegetable dishes, sugar bowls, cream and jugs.  
—Gimbels, "Subway Store Day"

## Sale of Figured Japanese Grass Rugs

Double warp. Sizes for every kind of room. Gimmel standard quality that goes into the majority of seashore and country homes. Save considerable by taking advantage of these prices—\$1.15 up to \$5.75.

9x12 ft., \$5.75 | 6x9 ft., \$3.75 | 36x72 in., \$1.15  
8x10 ft., \$4.75 | 54x90 in., \$2.75

Seamless Worsted-face Tapestry Brussels Rugs \$2.50 yd. quality Wool Velvet Carpet, in long in desirable patterns, very slight weaving defects, 9x12 ft., specially priced at \$22.50  
\$1.65 yd. Jute-face Velvet Carpet, in long remnant lengths, 85c yd. \$1.25

Congoleum Remnants, long lengths, two yards wide, plenty of a pattern to match. Reg. 75c quality at, sq. yd. } 30c  
—Gimbels, "Subway Store Day"

## Boys' Wash Suits 95c

Stock up! Buy three, four or more of these very good quality suits at this sensational price. Clean, fresh and crisp. Fast color fabrics including chambray, repp, beach cloth, galatea and linen. Oliver Twist, middy and Norfolk models. Plain colors and combination effects. Sizes 3 to 8 years.  
**\$1.50 Boys' Washable Knickers, 65c**  
—Gimbels, "Subway Store Day"

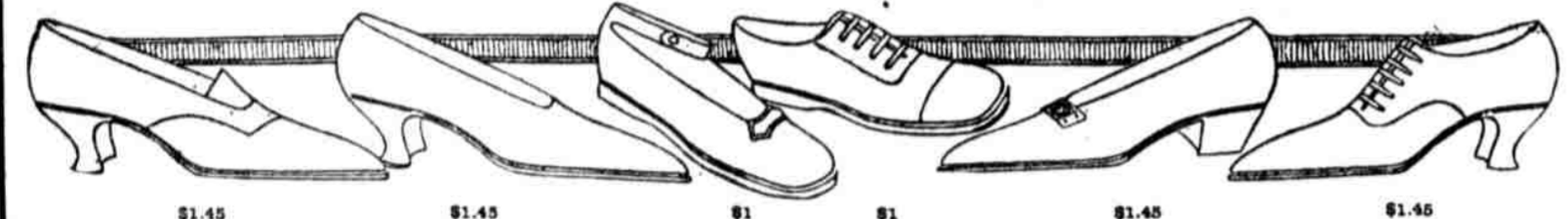
## Slightly-Used Sewing Machines —\$10 and \$12

Choice of Singer, Wheeler & Wilson, Household and Other Good Makes  
They're the best values we've had for many a long day. Other wonderful values:—  
**Singer Machines, \$12 and \$25 Domestic \$19.50 New Home \$21 Wheeler & Wilson \$12**  
Early shoppers will get the "plums."  
—Gimbels, "Subway Store Day"

## Men's Two-Piece Blue Serge and Palm Beach Suits Subway Store Day-Priced \$11.50

Other Stores Get \$17.50 and \$20  
Twice a month we launch a "Subway Store Day" and sell merchandise close to cost—that's why these men's summer suits are priced so remarkably low—but just for one day only.  
The Blue Serges are skeleton-lined and have piped seams, insuring extra strength. Single-breasted models only, and in regular sizes and shorts and stouts. At \$11.50.  
The Palm Beaches come in blue, black, gray and sand-color, and for men who prefer them we have pin-stripes and neat checks. Single- and double-breasted models. \$11.50.  
**Men's Separate Trousers at \$1.75 Regularly \$3.50**  
—Gimbels, "Subway Store Day"

## 3000 Pairs of Women's Low Shoes at \$1.45



You Save at Least \$2 to \$4 a Pair on This Desirable Footwear

Every this-season's style of shoe. White Canvas. Black Kid. Patent Leather. Plain Pumps. Buckle Pumps. Oxfords. Colonial. Eyelet Ties. Welting and turned soles. And the size range from 2 1/2 to 7. At \$1.45.

**Children's Shoes at \$1**  
Worth \$1.50 to \$2.50. Patent and kid button Shoes in sizes 4 to 8. White canvas lace Shoes, Sandals and Play Shoes, in sizes 6 to 12. At \$1.  
**Boys' Canvas Sports Shoes, \$1.95.** Values \$2.45 and \$3  
Ankle patch and rubber soles. Sizes 10 to 5.  
—Gimbels, "Subway Store Day"

**5000 Cotton Huck Towels \$1 Dozen**  
Every towel has a neat red border, medium size, absorbent quality; special for boarding houses and seashore use, at \$1 doz. Value \$1.50.  
**Mercerized Table Cloths, round designs; size 72x72 inches, satin finish; reg. \$2.50, now \$1.90**  
**500 Heavy Mercerized Scarfs, size 18x52, with Table Damask, 54 inches plain cotton centers, at 40c ea. Reg. 50c.**  
—Gimbels, "Subway Store Day"

**5000 Bleached Seamless Sheets, 95c**  
Dependable heavy quality, double-bed size; priced at 1/4 less than a year ago. At 95c.  
A limited lot shop-soiled Bolster Cases, 42x72 inches; regular 75c, at 39c.  
Clearance of shop-soiled Pillow Cases, 45x36 inches. White they last, 19c.  
**350 Shop-soiled Bedspreads, at \$1.50 to \$2.95.** Variously crocheted, dimity and marcellis spreads. Average half price.  
—Gimbels, "Subway Store Day"

**1200 Window Awnings, \$1.75 Regularly \$2.50**  
Ready-to-hang. Fancy green and white stripe duck. Various sizes—2-6 to 4-0 wide by 4-6 high or plain khaki 30- and 36-inch widths only; galvanized frame and fittings. At \$1.75.  
**300 Washable Couch Covers at \$1.50**  
50 inches wide by 2 1/4 yards long.  
500 Cretonne-pattern Cushions, at 85c. Tufted, reversible, light and dark colors. Regularly 65c.  
—Gimbels, "Subway Store Day"

**Buy Canned Peas Now**  
500 cases of Purity Brand Tender Early June Peas, special in case, dozen or 1/2 dozen lots, at, caust ..... } 12 1/2c  
**Dry Roast Coffee, Subway regular Winner Blend, at 3 lbs. for 65c, or 5 lbs. for 95c.**  
**New Season Mixed Tea, importer's samples, close to half price, at 3 lbs. for } 80c**  
Macaroni, freshly made, special, at 4 packages for 29c.  
—Gimbels, "Subway Store Day"

**1020 Men's Shirts at \$1**  
Greatest Value in Town  
All the cool summer materials in white and fancy stripes.  
They're "seconds"—just a little spot or possibly a button missing.  
Collar attached and sports models. All sizes in the lot. Best to get a half dozen or more for future use. \$1.  
—Gimbels, "Subway Store Day"