

Eastern Warehouse Company

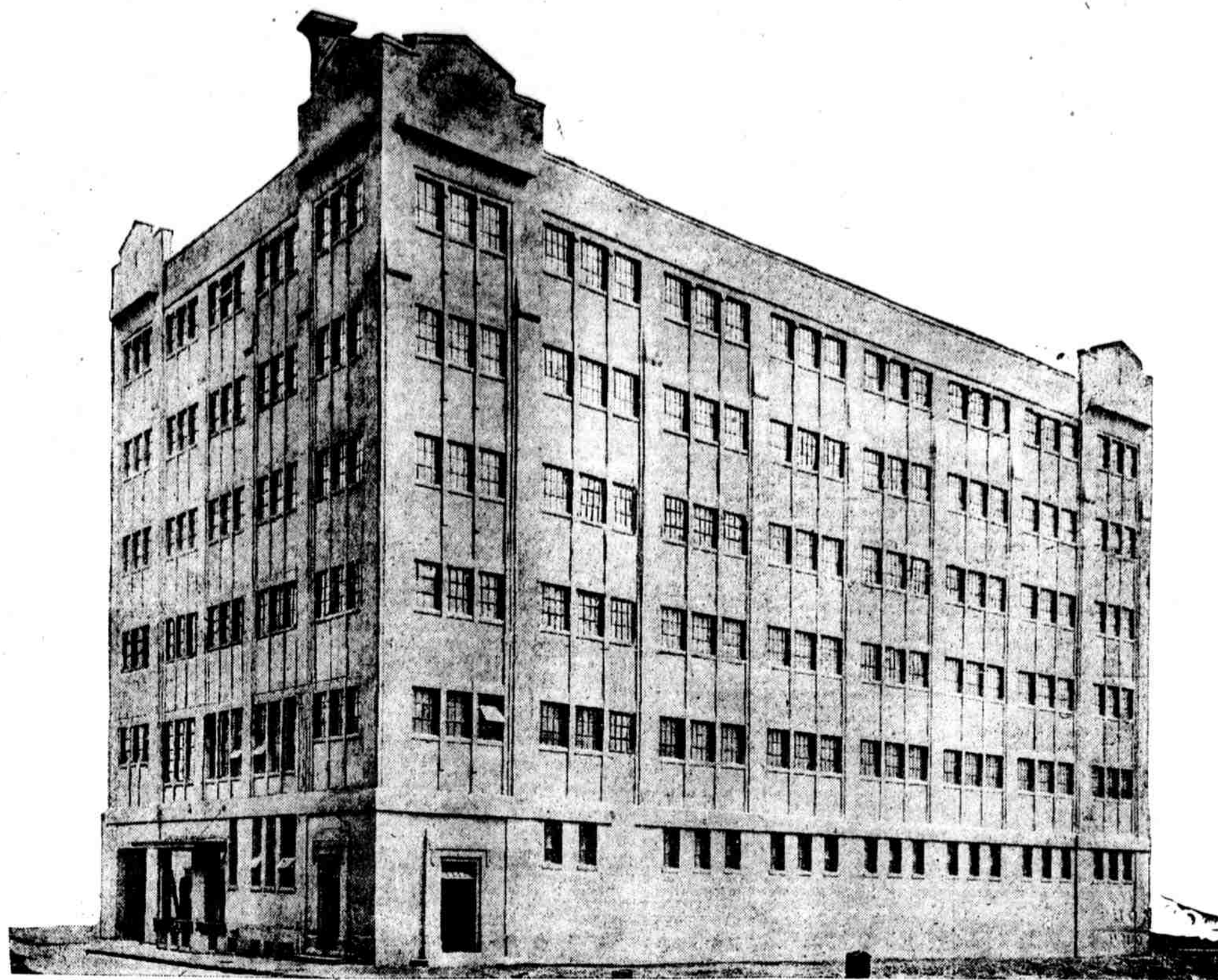
This new warehouse is situated on the plot bounded by new Delaware avenue, Poplar, Penn and Canal streets, measuring 177 feet on Delaware avenue and 100 feet on Poplar street.

Its location is unexcelled for general storage purposes, easily accessible to railroads, wharves, factories and stores.

It contains six stories and basement, constructed entirely of re-enforced concrete of the flat-slab type, with concrete exterior walls, containing abundant steel sash and steel doors.

The exterior is of unusual design, with accentuated vertical lines and bold grouping of masses, which, with its light color, makes the structure stand out distinct and unique from other warehouses and industrial buildings in the neighborhood, in very appearance massive and suggestive of utility.

A railroad siding runs directly into the first floor, permitting the loading and unloading of four freight cars at one time. Entrances of ample width on two sides permit the rapid handling of materials to and from trucks.



And the elevators and other interior equipment and construction are so designed that both incoming and outgoing materials are quickly handled from all floors without any confusion or congestion.

The building is in every particular modern throughout, being equipped with a vacuum heating system, modern plumbing with porcelain fixtures, electric wiring for power and lighting, two high-speed micro-leveling freight elevators.

It is vermin-proof. The character of its fireproof construction, with its automatic sprinkler system, cement floors and absence of all wood or other inflammable materials, assures the lowest insurance rates of stored materials.

The basement is below the level of the river, but by special design and construction it has been made absolutely waterproof.

The strength of construction permits the storage of the heaviest materials. In every particular this new warehouse is representative of progressive Philadelphia—"The Workshop of the World."

Designed, Constructed and Equipped By:

CLARENCE E. WUNDER
ARCHITECT AND ENGINEER

1415 LOCUST STREET
PHILADELPHIA

Spruce 4500

Race 6814

CRAMP and COMPANY

BUILDING CONSTRUCTION

Denckla Building
Eleventh and Market Streets
Philadelphia

Filbert 2205

Race 6961

**FLOOR HARDENER
QUICKSTONE**

AN INTEGRAL LIQUID
WAS USED TO HARDEN ALL THE
CEMENT FLOORS IN THIS STRUCTURE

Specified by the Foremost Architects
USED BY THE MOST PROMINENT CONTRACTORS

A. T. MALMED & CO.

SEND FOR DATA PENN SQ. BLDG. PHONE SPRUCE 1130
PHILADELPHIA

ELEVATORS

OTIS ELEVATOR COMPANY

OTIS BUILDING

SHEET METAL WORK

Wayne PRODUCTS AND ROOFING 45 years of experience are back of the products and service we offer you.

THOMAS S. GASSNER CO.

4545 Wayne Ave., Philadelphia Phone—Wyoming 3266

METAL LOCKERS

DEXTER METAL MFG. CO.

Front and Arch Sts., Camden, N. J.

CEMENT INSPECTION

E. L. CONWELL & CO., Inc.
Engineers, Chemists, Inspectors

ESTABLISHED 1894
Tests of Cement, Concrete, Steel, etc. Analysis of
Steel, Alloys, Oil, Coal, Paint, Water, etc.
2024 ARCH ST., PHILADELPHIA, PA.

PLUMBING FIXTURES

Manufactured and Furnished by

BRIDGMAN CO.

Chestnut and 30th Sts. Philadelphia, Pa.

A BUILDING RECORD!

Contract for This Building Signed July 6, 1920

First Pile Driven July 19, 1920

Building Completed Feb. 11, 1921

Twenty-nine Days Ahead of Contract Time!

The Result
of Co-operation of
Architect, Owner and Contractor

PAINTING

LLOYD A. POTTEIGER

1829 FILBERT STREET

Philadelphia

MILLWORK

Grater-Bodey Co.

Manufacturers of Millwork

Norristown, Pa.

ELECTRIC WIRING

United Electric Construction Company

1727 SANSOM STREET

Philadelphia, Penna.

LUMBER

JANNEY LUMBER CO.

Building Lumber Pier 52, North Wharves
Philadelphia, Pa.

MARBLE AND SLATE

Marble, Alberne Stone Tile Structural Slate

E. P. HENRY CO., Incorporated

Contractors
1506 Sansom St., Philadelphia

IRONWORK

RICHMOND & KEMP
Manufacturers of Ornamental and Structural Ironwork

OFFICE AND WORKS
1838-46 Germantown Ave., Philadelphia
Ornamental Iron, Machine Shop, Architectural Iron, Blacksmithing,
Light Structural Steel, Staircases, Pressed Furnaces,
Light Plain Work, Pipe Rolling, Pipe Fittings, Heavy Hardware,
Ship Hoops and Harches, Ship Hull Fittings

PLASTERING

Diamond 209 or 2256 Park 2727

F. M. VENZIE & CO.

Plasterers 2610 W. Huntingdon St.

HAVE YOU OUR ESTIMATE?

EXCAVATING

McNichol Paving and Construction Co.

PHILADELPHIA, PA.

INSURANCE

Stokes, Packard, Haughton & Smith
5th & Walnut Sts., Philadelphia

Ladies Let Cuticura
Keep Your Skin
Fresh and Young

TRUNKS REPAIRED
ALSO BAGS & SUIT CASES
SALESMEN'S SAMPLE CARRIERS
All Kinds Trunks, Bags and
Suit Cases Made to Order.
VICTOR VALISE CO., Inc.
48 N. 7th St. Phone
Market 2845

OUTING SPORT HATS
For Girls and Men
Pongee, Gingham, Silk, Tweed
Combination colored brims
to match your suit

MUENCH, 1537 Filbert

Old Cracking and Spalling
PLASTERED WALLS
can be economically repaired, water-
proof and recoated with
Morene Likwid Sement
a permanent, indestructible and damp-
proof coating for exterior and interior
brick, stone, concrete, etc. walls.
Applied With a Brush
Send for Additional Information
THE ARVON COMPANY
Head Building Phila., Pa.
Bell Phone: Keystone Phone:
Lombard 5014 Race 6120

LUBIN'S

Oldest Optical House

SPECIAL
\$3.50

Special Ground to Order to Correct All
Defects of Vision, Including
Selection from Various Styles of Frames
FRONT SERVICE
EYES EXAMINED FREE
BY REGISTERED OPTOMETRIST
21 S. 8th St. Established
1878

YEO & LUKENS CO.

HEADQUARTERS FOR

Conklin's
Self-Filling
Fountain Pen

Non-Leakable - Cleans and Re-Fills in five seconds
Make your selection tomorrow

WATERMAN'S
Self-Filling Fountain Pen

and
EVERSHARP PENCILS
12 N. 13th 719 Walnut
Stationers, Printers, Blank Books

FIAT

MADE IN ITALY

EUROPE'S greatest con-
tribution to modern au-
tomotive engineering is em-
bodied in the products of
the great Italian firm—
Fiat.

Three new types of passen-
ger cars:

Model
501 Fiat (Small—30) \$2575
505 Fiat (Medium—25) \$4600
510 Fiat (Large—18) \$5720
War Tax not included.

Potter-Diesinger Motor Co.
2207 Chestnut
Bell Phone: Spruce 21-41



Adelphia Roof

There's a certain little
air of cozy comfort and
good breeding on the
Adelphia Roof that makes
it a very delightful place
for a man to bring
his wife and daughters.
Then, too, the prices are
moderate, the food good,
the music delightful—
and 21 stories from the
heated street you'll al-
ways find a breeze stir-
ring.

Dancing
8:30 Till Closing

HOTEL ADELPHIA
CHESTNUT 13th