

54 TO GRADUATE AT STATE COLLEGE

Fifty-two Women in Largest Class in History of Institution

WAR HONOR FOR 135 MEN

State College, Pa., June 8.—In the largest class ever to be graduated from Pennsylvania State College, Philadelphia County will be represented by thirty-three students who have completed the four-year courses. The commencement week activities will start on Friday evening and continue until after the graduation exercises on next Tuesday morning. The senior class totals 484, and of this number fifty-two are women. Degrees granted at mid-year exercises with the new list make a total of 530 to be granted this year.

College certificates for war service will be given to 135 men in the graduating class. This custom was started in 1919, and every graduate who served in the war has received this citation, which is signed by the president of the college.

Dedication ceremonies at the "Old Willow" in honor of a new tree planted recently to carry on campus traditions will mark the opening of the alumni day program Saturday morning. At least 900 graduates are expected to return for reunion day. The annual alumni business meeting will be held Saturday morning, track events and baseball with the University of Pittsburgh following in the afternoon. The alumni will hold a reception to President and Mrs. John M. Thomas in the evening.

The baccalaureate sermon will be delivered by President Thomas next Sunday morning, and he will also give the commencement address. Class day will

be observed by the graduates on Monday.

The following students from Philadelphia are among those who will receive diplomas:

Frederick B. Anderson, civil engineering; William R. E. Andrews, chemical agriculture; David B. Baird, mining engineering; Emmet J. Baney, dairy husbandry; Albert M. Baker, industrial engineering; Clifford E. Beaman, mechanical engineering; George D. Brooks, education and psychology; Miss Rhoda L. Crawford, modern languages; John C. Dunagan, botany; Samuel Freedman, electrical engineering; Frank W. Glading, chemistry; Charles K. Graeber, mining geology; Joshua Israel, industrial chemistry; John R. Kickpatrick, forestry; Nelson R. Korb, industrial engineering.

HITCHCOCK URGES LEAGUE

Need of Body Seen in Present Depression, Says Senator

Durham, N. C., June 8.—(By A. P.)—Present international and domestic depression of commerce and industry is demonstrating the pressing necessity of a league of nations, Senator Hitchcock, of Nebraska, declared today in an address at the commencement of Trinity College. Referring to the staggering and unbalanced national budgets of both the conquerors and the vanquished in the late war, he said the United States was "setting a wretched example for nations of the world," particularly by present military appropriations.

BORDEN FOR TRUCE IN JERSEY MILITIA

Millionaire Sportsman, Now Brigadier General, Deplores Factional Strife

SEA GIRT CAMP IS OPENED

Special Dispatch to Evening Public Ledger
Camp Edwards, Sea Girt, June 8.—Upon assuming command of the National Guard camp of instruction, which opened here yesterday, Brigadier General Howard S. Borden, millionaire sportsman, whose appointment was bitterly contested in the ranks of the New Jersey military organization, declared

for a truce and the immediate application of the warring factions to the task of perfecting the State's fighting machinery. General Borden discussed the fight which was waged against him by officers of the Third New Jersey Infantry, the South Jersey regiment, whose former service officers objected to the naming of a civilian in preference to a veteran of the World War. The general declared that so far as he was concerned the whole fight was a closed book.

Preliminary instruction and organization having been completed yesterday afternoon, the 300 officers and men who are here for a week training, got down to the hard grind today.

General Borden, in assuming command, named his administrative and tactical staff as follows: Executive officer, Major Clyde E. Winteron; adjutant, Captain Frederick S. Taggart; assistant adjutant, Lieutenant George W. Newton; quartermaster, Captain Harrison Cook; assistant quartermaster, Lieutenant George F. Fleming; inspector, Major Eugene Geddes; instructor in guard duty, Major Joseph S. Norton; and Camp Surgeon, Captain James W. Hewson.

Major Archibald Comiskey, regular

army cavalry instructor; Major Wallace Perrine, of the infantry, and other regular army officers are on detail here to assist in the instruction work. Major C. H. Fowler, Twenty-sixth Infantry; Captain George M. Ferris, Eighteenth Infantry; Captain W. E. Lonsell, Sixteenth Infantry, and Lieutenant Richard P. Owenshine, Twenty-eighth Infantry, are among the additional instructors who have been sent here from Camp Dix.



Men Notice
Very quickly the woman of complete attractiveness—especially attractive in this season's thin waists and low-cut gowns. The refinement and grace of a woman depends upon a faultless toilet. That is why discriminating women insist on Delatone.

DEL-A-TONE
is a safe and sure preparation for the removal of hair from the neck, face or under-arms. Beauty specialists recommend it because it leaves the skin clear, firm and perfectly smooth. Delatone is easy to apply—simple directions with jar.

At Any Druggist's or Department Store

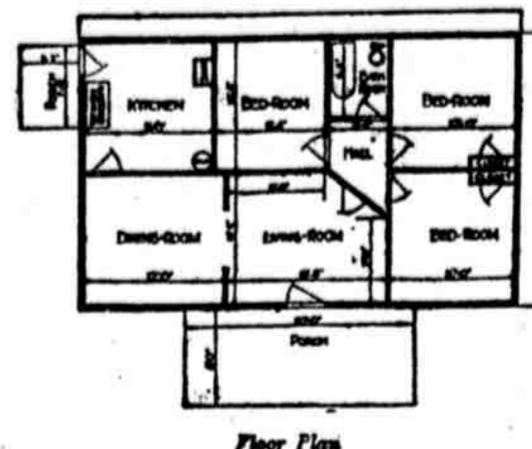
2 AIR BOMBERS "GO WEST"

Lives Snuffed Out When Army Airplane Strikes Tree
Hampton, Va., June 8.—Noel R. Thompson, of Jacksonville, Ill., and C. A. Rowen, of Quitman, Ga., flying cadets, were killed late yesterday when their airplane struck a treetop in the course of a bombing flight at Langley Field and caught fire.

Three of the four bombs carried exploded and the machine was demolished. The cadets came to the field a few weeks ago from Kelly Field, Texas.

Stop House Hunting

and investigate these fine six-room-and-bath bungalows that can be erected and ready for occupancy in a few days.



On Saturday, May 28th, Joseph P. Day sold at absolute public auction our six-room-and-bath U. S. Government-Built Bungalows for \$4150.00 erected at Long Beach, Long Island, on land valued at \$1100.00, making the value of these Bungalows \$3050.00.

Every one must know that the price paid at auction sales is materially lower than at private sales. Now, if these bungalows are a bargain at \$3050 erected, they certainly are the buy of the times at

\$1400.00 Freight Paid to **\$1400.00**
Your Local Station

Shipped in sections which are easily erected. \$700 may remain on 6% three-year first mortgage, or other suitable terms may be arranged.

Remember, these buildings have double walls, double floors, contain bath and kitchen plumbing fixtures. Your choice of Shingle or Clapboard exterior. Or \$100 allowance if you prefer Stucco. Write, phone or call our nearest office for further information.

United Portable Building Mfg. Corp.

Real Estate Trust Building,
Philadelphia
Phone Walnut 3517
115 Broadway, New York
Phone Rector 5665 and 5879
Calvert Building, Baltimore
Phones St. Paul 3620-3621

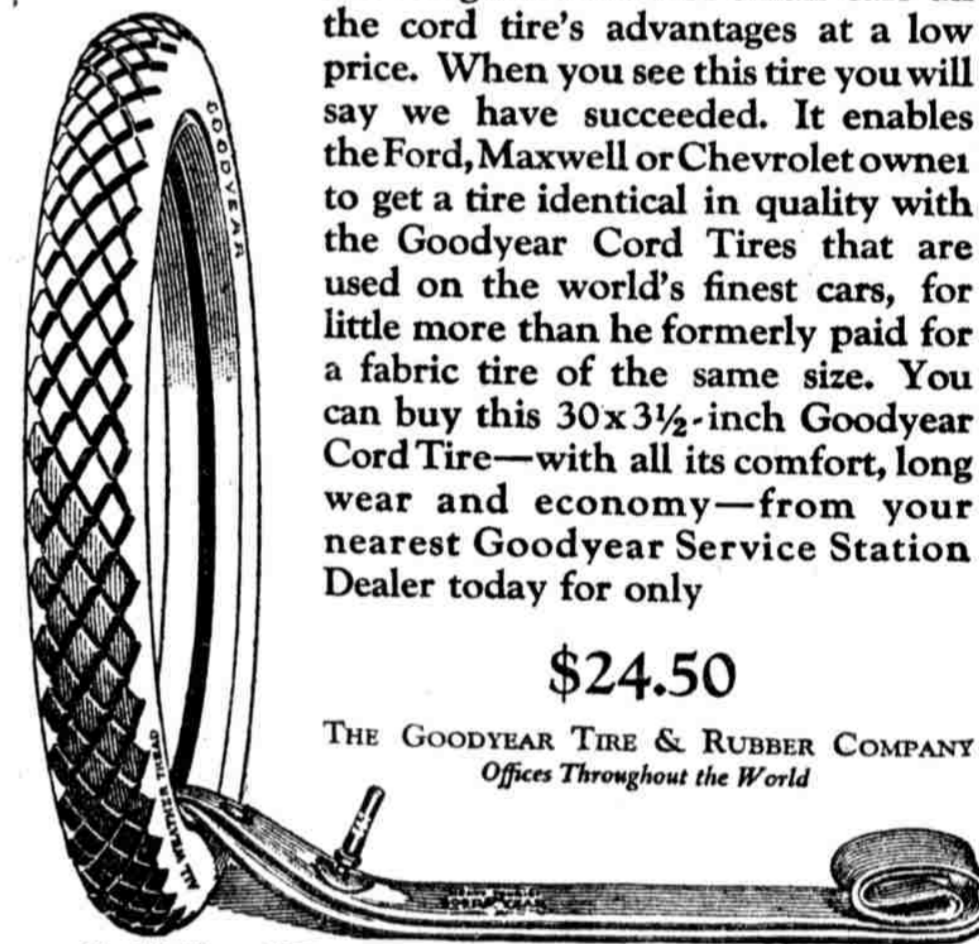


Cord Tires for Small Cars at Lower Cost

In our clincher type 30 x 3 1/2-inch Goodyear Cord Tire, we have endeavored to give owners of small cars all the cord tire's advantages at a low price. When you see this tire you will say we have succeeded. It enables the Ford, Maxwell or Chevrolet owner to get a tire identical in quality with the Goodyear Cord Tires that are used on the world's finest cars, for little more than he formerly paid for a fabric tire of the same size. You can buy this 30 x 3 1/2-inch Goodyear Cord Tire—with all its comfort, long wear and economy—from your nearest Goodyear Service Station Dealer today for only

\$24.50

THE GOODYEAR TIRE & RUBBER COMPANY
Offices Throughout the World



30 x 3 1/2 Rib or All-Weather Tread Fabric Casing **\$17.50**
30 x 3 1/2 Non-Skid Fabric Casing **\$15.75**
30 x 3 1/2 Heavy Tourist Tube in waterproof bag **\$3.25**
30 x 3 1/2 Regular Tube **\$2.55**

The following are among the Leading Goodyear Tire Dealers in Philadelphia Listed Sectionally for Easy Reference

West Philadelphia	Central Philadelphia	Northeast Philadelphia
H. RUDOLPH 424 and Chestnut st.	GED. L. CARROLL N. W. Cor. 15th & Race sts.	GEORGE W. TOLAND 4003 Paul st., Frankford
BERLIN BROS. 272 Woodland ave.	ECHO GARAGE 1016-18 Chancellor st.	SEES & FABER 2006 N. Front st.
WARE BROS. 5110 Walnut st.	PIERCE AUTO SUPPLY CO. 1427 Fairmount ave.	JOHN A. OAK'S AUTO SUPPLY 434 E. Girard ave.
SPRINGFIELD AVE. GARAGE 2015 Springfield ave.	F. C. HORNBECK 219 S. 17th st.	GROOKETT BROS. Fox Chase, Phila.
MARYBOR AUTO SUPPLY CO. 2015 Lancaster ave.	KEYSTONE TIRE STORE OF PHILA. 1310 Vine st.	ALBERT G. STAHL 299 E. Roosevelt Blvd.
OVERBROOK HEIGHTS GARAGE 1529 N. 50th st.	TWINING BROS. 256 N. 15th st.	STAHL'S GARAGE 4830 Rising Sun ave.
North Philadelphia	ENNIS TIRE SERVICE 425 N. Broad st.	TACONY GARAGE Torrensdale ave. & Longshore st.
PARK AVE. GARAGE 2407 Park ave.	ALOIS BUGGLEN 1030 N. 27th st.	JACOB LUTZ 4123-4133 Frankford ave.
DE CRAY BROS. 2132 N. 16th st.		HILL ST. MARTIN'S GARAGE Savatous & Lincoln Drive, St. Martin
WM. F. KIMMINGTON & CO. 2400 N. Broad st.		ALLEN'S GARAGE 19 Highland ave., Chestnut Hill
GERMANTOWN-MT. AIRY and Chestnut Hill		
J. AND G. SUTTON 2124 E. Chelton ave., Germantown		
WHITE SWAN GARAGE 7209 Germantown ave.		



Insurance is Not Complete
PROTECTION

Insurance companies operate on the principle that "Insurance" is your ultimate protection.

But insurance does not cover your total losses in case of disaster. It may cover the intrinsic value of the goods stolen or damaged, but it does not cover the big loss due to upset and delay in your business.

The only logical way to prevent loss is by adequate, time-proven protection. The enviable record of Holmes has demonstrated time and again that—

"Where There Is Holmes, There Is Safety"

HOLMES ELECTRIC PROTECTION

TELEPHONES—WALNUT 0611—MAIN 8030
812 CHESTNUT ST., PHILADELPHIA
NEW YORK PITTSBURGH

FIRE SALE
Furniture—Rugs—Carpets
A WONDERFUL OPPORTUNITY

BECAUSE of our recent fire we are offering our entire stock of High-Grade Bedroom, Dining-Room and Living-room Furniture, Rugs, Carpets, etc., at Special Sale, which will continue until our stocks are exhausted. This is your opportunity to secure your needed furnishings almost at your own price.

NOTE CAREFULLY THE ADDRESS
PEOPLES SUPPLY CO.
1925-27-29 Columbia Avenue
Open Every Evening During Sale

EVERSHARP
Made by The Wahl Company, Chicago
Prices \$1 to \$65

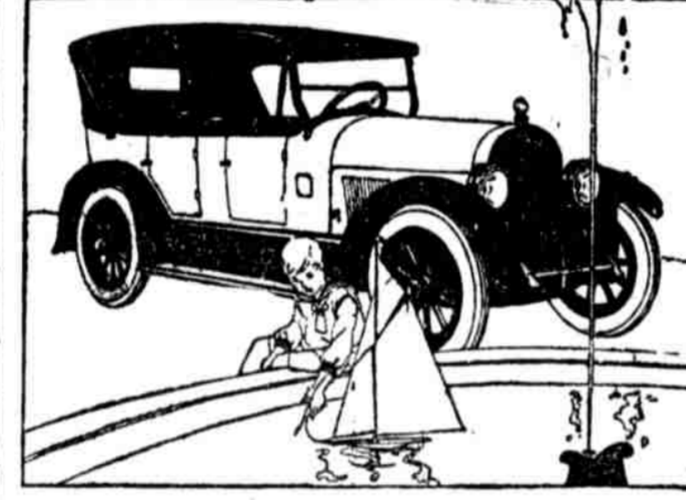
IN THE MODERN OFFICE everybody has an Eversharp . . .

CARPENTERS!
Building and repairing time is here. Get carpenters, painters, paperhangers, etc., through an ad in

THE LEDGER
MORNING and EVENING
Walnut 3000—Main

Automobile Salesmen Wanted

Men of initiative and energy, capable of earning big money, and keeping pace with one of the liveliest and strongest organizations in Philadelphia territory, handling lavishly advertised cars that have limited competition at their price. Applicants must be employed, and give highest references as to character and ability to sell. Salary and commission proposition. C 401, Ledger Office.



Created by Popular Demand
The New HAYNES
Light Six 50

A SENSATIONAL car at a sensational price. Compare it with any other "six" on the market today—with cars costing upwards of one thousand dollars more—and we'll prove its superior merits essential—beautiful lines, performance, power, riding comfort, roadability, low maintenance cost.

Let Us Prove the Essential You Want in a Demonstration

This is the car that the public demanded—a beautiful, light-weight, 5-passenger "six" of proven quality throughout, economical, roomy, comfortable, powerful. No wonder the demand is greater than the supply.

\$1985
F. O. B. Kokomo

HENRY A. ROWAN, JR., CO.
723 North Broad Street, Phila., Pa.
Some Desirable Territory Open for Live Dealers Phone, Spruce 4788

PEERLESS

The Best Car For You is not necessarily the highest priced car, nor the lowest priced car in its class. It is the car that will give you the best and longest service for the least cost.

When you compare all the better class eights for power, pick-up, workmanship, comfort and appearance, you will not be able to explain why Peerless, with all its advantages, should cost the least.

Until you consider these facts—

Peerless prices are based upon former low costs of buildings and machinery, and upon present costs of labor and materials.

Touring Car \$2,990 Roadster \$2,990 Coupé \$3,680
Sedan \$3,950 Sedan-Limousine \$4,210

PRICES F. O. B. CLEVELAND
War tax not included

THE PEERLESS MOTOR CAR COMPANY
Cleveland, Ohio

LOAFING RANGE SPORTING RANGE

GIRARD AUTOMOBILE COMPANY
2314 Chestnut Street, Philadelphia
Phone, Spruce 1446