

WOMAN FIGHTS FIRE IN ARDMORE HOME

Awakened by Smoke, She Rescues Two Small Sons, Then Battles Flames

FIREMEN COME TO HER AID

Awakened by the almost suffocating fumes of smoke that filled her bedroom shortly after midnight, Mrs. John W. Williamson, of Ardmore, groped her way to the beds of her two sons, rescued both, telephoned for the Ardmore fire department and then fought the blaze single-handed until the arrival of the firemen.

Then the woman, overcome by the smoke and excitement, collapsed. A physician was summoned but no serious results are expected from her experience.

The fire started in the kitchen of Mrs. Williamson's home, supposedly from crossed wires. When Mrs. Williamson was awakened she forced her way through the smoke that filled the hallway to the room occupied by her sons, John, Jr., twelve years old, and Frank, eight. The children were nearly suffocated when their mother reached the room.

Throwing blankets about them, Mrs. Williamson carried the younger boy and led the other downstairs and out of the house.

After she had used the telephone to send in the alarm, Mrs. Williamson endeavored to fight the flames in the kitchen by throwing pitchers of water on what she supposed was the source of the blaze.

By the time the firemen arrived Mrs. Williamson had been forced back by the flames toward the dining-room, but was pluckily throwing water on the flames as they swept forward.

Firemen had little trouble in putting out the fire. The loss from smoke, fire and water is estimated at about \$1500.

Mrs. Williamson, a widow, owns a hardware store in Ardmore and is reputed to be wealthy.

Mrs. Leidy Honored by France

Word was received yesterday by Mrs. Joseph Leidy that she had been decorated by the French Government for her work as treasurer of the French War Relief Committee in Philadelphia. Mrs. Leidy is one of a long list of Americans who will receive the bronze reconnaissance medal for various deeds of benefit to France.

LEAVES HOSPITAL AND DIES

Printer in One Plant 25 Years Collapses on Street

Charles Mason, fifty-eight years old, of 127 North Tenth street, was taken ill yesterday at the plant of George F. Lasher, printer, 147 North Tenth street, where he had been employed for twenty-five years. He was taken to the Hahnemann Hospital, given an examination, some medicine and discharged.

On his way back to work the man collapsed again and died soon after being taken to his room in a patrol of the Tenth and Buttonwood streets police station. Heart disease was the cause of death.

OLD PARLOR SUITS MADE EQUAL TO NEW

Reconstructed upholstered and polished \$15 up. First-class work guaranteed. Slip covers made to order.

We carry a large stock of upholstery materials, selling at wholesale prices.

AMERICAN UPHOLSTERY CO.
Oldest and Largest House of Its Kind
305 Arch Street Write or Phone Market 1008.

Safe Milk

For Infants & Invalids NO COOKING

The "Food-Drink" for All Ages. Quick Lunch at Home, Office, and Fountains. Ask for HORLICK'S.

Avoid Imitations & Substitutes

SCREENS Keep Out FLIES & Protect Your Family

Write for Booklet and Estimate

Orange Screen Co.
ROBT B. HOOPER
Local Representative
322 and Sansom Sts., Phila.

Do we serve you?
We Handle Only the Very BEST COAL

500 Lbs. to Every Ton For 35 Years We Serve You Right

OWEN LETTER'S SONS
A Yard That Has No Equal
Trenton Ave. and Westmoreland St.
Bell—Frankford 2150
Keystone—East 253

See Speare to See Right Glasses at a Moderate Cost

Toric CURVED LENSES \$2.50
As low as
Lenses give wider field of vision & are more becoming.

Toric CURVED BIFOCAL LENSES \$5.00
As low as
Always look thru SPEARE'S Invisible Bifocals

Optician for their individuality. No conspicuous lines, no leading place for dirt.

SPEARE OPTICAL COMPANY

Use Cuticura Talcum To Powder and Perfume

All about face, skin, baby and dusting powder. Cuticura talcum and perfume. Cuticura talcum is the place of other perfumes. A few grains sufficient.

Send for Cuticura Talcum To Powder and Perfume. Price 25c. Write to Cuticura Talcum To Powder and Perfume, Dept. 100, P.O. Box 100, Lowell, Mass.

One-Day Outings From PHILADELPHIA

New York \$3.00 Round Trip
Every Other Sunday
NEXT SUNDAY, MAY 16
Special train leaves Reading Terminal 9:00 A. M., stopping at Columbia Ave., Huntington St., Market Junction, Logan and Jenkintown.

Wilkes-Barre \$3.75 Round Trip
Scranton Round Trip
Also Much Chunk, White Haven and Valle
Next Sunday, May 15
Special train leaves Reading Terminal 7:00 A. M., stopping at Columbia Ave., Huntington St., Market Junction, Logan and Jenkintown.

SPEAR Ranges Heaters
A Stove for every purpose

Spear's Combination Coal and Gas Range

Is the range for every range. Reduces your fuel bills. Is easily and conveniently installed. Is made to last. Heating range and broiler. Provides an abundance of hot water, and is fitted in instantly for coal, gas and combination. Separate coal and gas ranges to suit every need.

Spear's New Warm Air Distributor Turns Water into Steam.

Spear's Hot-Water Stove fills the summer need for hot water, and for your laundry and preserving work.

Send for Booklet, or better still, call and have a demonstration.

Hot Water, Vapor and Steam Heating

James Spear Stove & Heating Co.
1823 Market St.
Bell: Spruce 2470
Keystone: Race 783
Made in Philadelphia Since 1842

COAL REGION

TAMAQUA MAHANY CITY \$3.25 Round Trip

GILBERTON MAHANY PLANE SHENANDOAH GIRARDVILLE ANSLAND GORDON \$3.50 Round Trip

MT. CARMEL and SHAMOKIN
Sunday, May 22
Special train leaves Reading Terminal 7:00 A. M., stopping at Philadelphia, Huntington St., Market Junction, Conshohocken and Narrows from the Bell St.

SEASHORE \$1.50 Round Trip
EVERY SUNDAY
ATLANTIC CITY OCEAN CITY WILDWOOD and CAPE MAY
Via Atlantic City Railroad
Leaves Chestnut and South St. Perries for Atlantic City 7:30 A. M. For Ocean City, Wildwood and Cape May leave Chestnut at Perries 7:30 A. M. Returns at Perries 7:30 A. M. Returning from all points 9:00 P. M.

War Tax 8c additional to the above fares. For Detailed Information Consult Agents—See Elders.

Phila. & Reading Railway

Store Hours, 9 to 5:30

For Friday Fortunes are made by opportune buying—and watchful buying is relatively important for the home.

GIMBEL BROTHERS
MARKET · CHESTNUT · EIGHTH · NINTH

Thursday, May 12, 1921

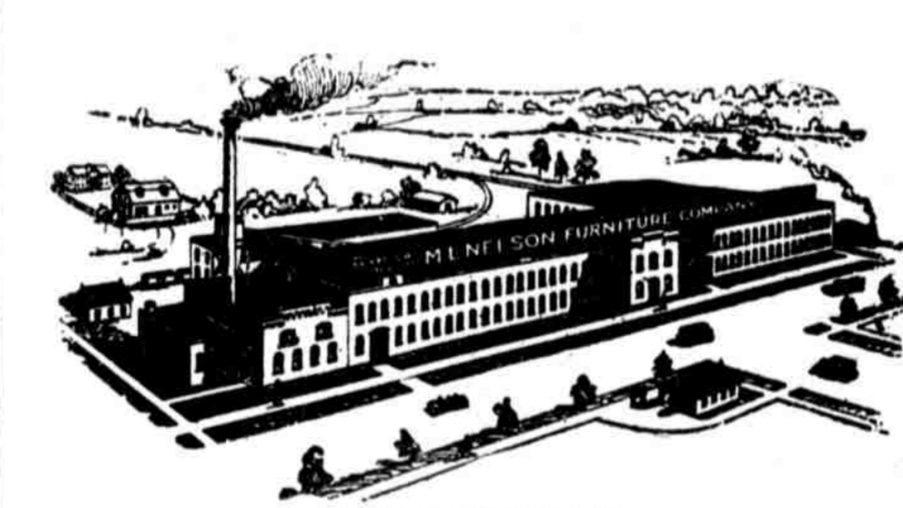
This Nelson furniture was put in work for exacting customers—and is as good as it is beautiful.

For Friday

To Sell the Good FURNITURE Made by the M. L. Nelson Furniture Company, in Bankruptcy

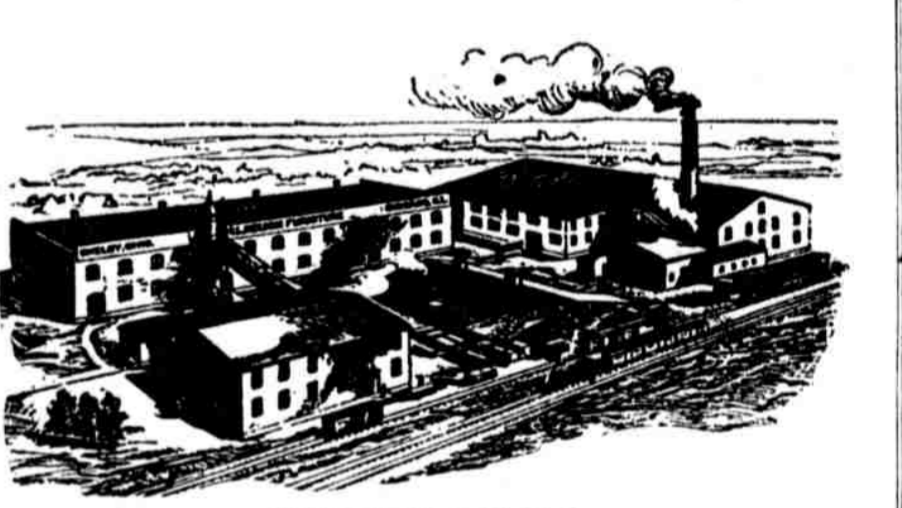
The M. L. Nelson Furniture Company owned and operated one factory in Indiana and two factories at good producing points in Ohio.

Under business stress, last December, when the Company was flooded with countermands of orders, it succumbed and its affairs were placed in the hands of a creditors' committee and application for bankruptcy was made.



FACTORY IN INDIANA

It is thoroughly good furniture, in its variety, meeting very general need, and in its good styles offering that satisfaction a person seeks in furniture that has to be lived with for a very long time.



FACTORY NO. 1, IN OHIO

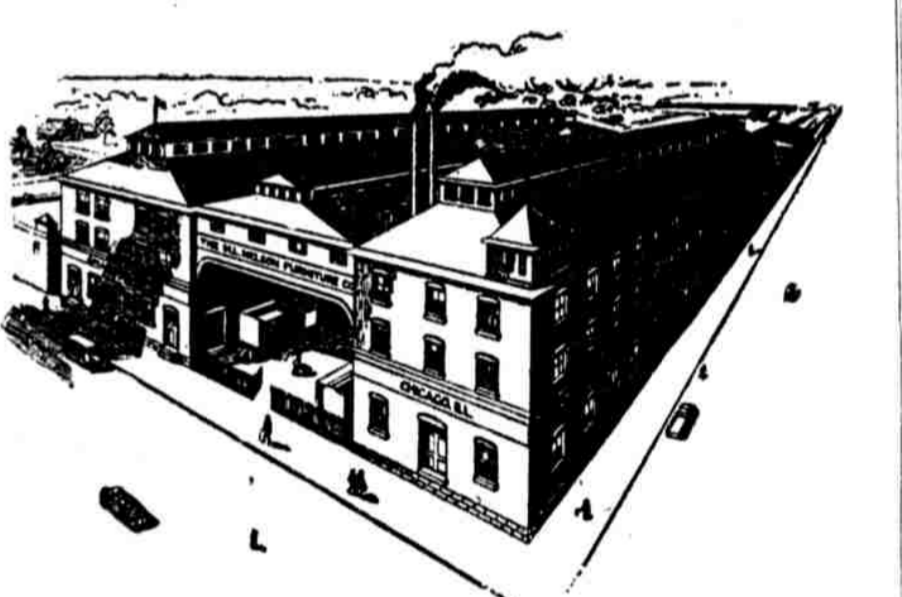
It is furniture of Gimbel standard and we have Philadelphia's share of the very extensive stocks to sell

At Half and Less Than Half the Expected Prices

Chiefly bedroom and dining-room furniture, the effects of the crash were to hasten the sale to us by other concerns of living-room furniture. Therefore—

The Sale Will Embrace Furniture for the Whole House

Business swings like the pendulum of a clock. The pendulum at rest represents normal values and usual selling. Under war and post-war conditions producing costs, both for labor and materials, started the pendulum swinging toward higher prices. To make matters worse, cabinet makers found other work than usual furniture making, and production was lessened, while the millions with full purses improved their home equipment. Then came a partial return of workers to furniture production and the M. L. Nelson Company secured good orders, only to have many of them revoked by cancellation, when retailers faced, early last winter, a shrinkage in volume of sales that really never materialized. But the harm was done. And the good furniture made, and in process of making, has, by the calamity of the company's collapse, swung this pendulum the other way, and from high prices the sweep has been to—



FACTORY NO. 2, IN OHIO

Prices Far Under Profitable Production Value

The furniture at command bulks a very large total, but individual lots are in many cases limited. It is possible that a suite advertised the second day of the sale may be sold before many customers arrive. But that happens in any such movement and last as lots may—

THE SALE WILL OPEN MONDAY MORNING, 16th

Many men are busied in getting the furniture ready and—

You Are Invited to Come in Before Monday to Examine and to Select, if That Serves Your Purpose

In fairness, the furniture must be available to all until actually sold; hence, every sale must be final. Exchanges, credits and refunds cannot be allowed.

Payments for furniture may be extended over a long period, with full advantage of the sale's economies.

Monday—the sale opens.

Right Now—the furniture can be seen and selections made.

Bedroom Suites, \$125 to \$750, Values \$250 to \$1600
Dining-room Suites, \$150 to \$1100, Values \$300 to \$2200
Living-room Suites, \$185 to \$1750, Values \$400 to \$3500

—Gimbels, Sixth Floor.