

BLOODY CLOTHING IN MURDER TRIAL

Garments May Be Part of Evidence Against Sailor in Federal Court

Blood-stained clothing discovered today and said to belong to Raymond P. Gill, sailor accused of the L. S. S.

Columbia, may be the principal evidence against him in the federal courts here. Gill is charged with murdering Samuel J. Diamond, his bunkmate. The authorities say the men were engaged in making counterfeit half dollars and when Diamond threatened to "peach" he was murdered.

hasten the trial. Gill has declined to talk thus far and the only evidence the authorities have is circumstantial. There are no corroborating witnesses to either the alleged murder or the display of bad blood between the bunkmates. When Gill was brought to the Federal Building for preliminary hearing he intimated he knew the identity of the sailor who did kill Diamond. He declines, however, to name him and authorities think he is playing for time to get together a legal defense that will stand water.

murder case the federal courts here have to deal with in twenty-six years. The accused man is thirty-two years old. Diamond's body is at the navy yard. His home was in one of the western states. The alleged murder took place on March 13 while the ship was in Central America.

HOLLANDER & FLEISHMAN & CO.

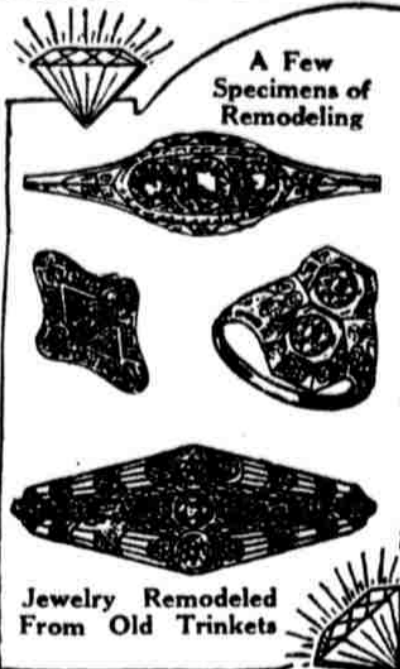
N.E. Cor. Chestnut at 11th

Old Jewelry-- Remodeled--Reset into Modern Designs of Beauty, Using Our Better System of Confidential Convenient Credit.

The sentiment that attaches to old Jewel Trinkets, may be retained—and the gems remounted into designs of modern beauty. We will submit designs and furnish estimate of cost. The work may be paid for on our



Open Saturday Evenings



Or so a week, is the rate we offer. Cash value. Cash service. Cash courtesy.

The Service Behind the Car

Our service station is so planned and operated that we render prompt service to owners of Dodge Brothers cars at minimum cost. Everything is on one floor; each job progresses from department to department; plenty of room to facilitate quick work; completely equipped shops for all classes of work; sufficient supply of parts on hand at all times to build ten cars, thus insuring prompt service to you. Scientific business system in every department saves time and money. 100,000 square feet of service equipment maintained exclusively for Dodge Brothers car owners, with a fixed charge for every job.

Thornton-Fuller Automobile Co.

Service Station
24th and South Streets Phone, Spruce 6737
5 Minutes From City Hall

It costs less to live when you trade at an Asco Store

Victor Bread

The same big loaf

now 6¢

At all our Stores



THE SCIENTIFICALLY BUILT WATCH

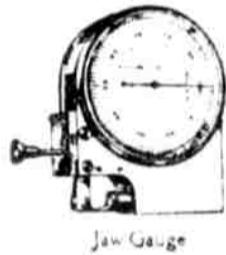


DUANE H. CHURCH OF WALTHAM

The world's most famous inventor of watch-making machinery

ACCURACY

The Bearing of a Shaft that Measures only Six One-Thousandths of a Centimeter, the Diameter of a Normal Human Hair



Jaw Gauge



The Pivot of Shaft



WALTHAM VANGUARD The World's Finest Railroad Watch at Jewels \$80 and up

Makers of the famous Waltham air friction quality Speedometers and Automobile Time-pieces used on the world's leading cars

WALTHAM

THE WORLD'S WATCH OVER TIME

Where you see this sign they sell Waltham Watches

This story is continued in a beautiful booklet in which you will find a liberal watch education. Sent free upon request to the Waltham Watch Company, Waltham, Mass.

WE told you in a previous advertisement that the twelfth part of a human hair was the difference between the Waltham standardized accuracy and the variable guess work in foreign watches.

A normal human hair measures six one-thousandths of a centimeter. Imagine, then, the pivots or bearings of the Balance Shaft being only the size of a human hair

If you should split one of the hairs of your head into six equal parts, each part would measure approximately one-thousandth of a centimeter. Yet, even this minute variation is eliminated by the Waltham standard of measurement. For instance, here is a Waltham Watch,

the works of which are designed to perform on a pivot measurement of six one-thousandths of a centimeter.

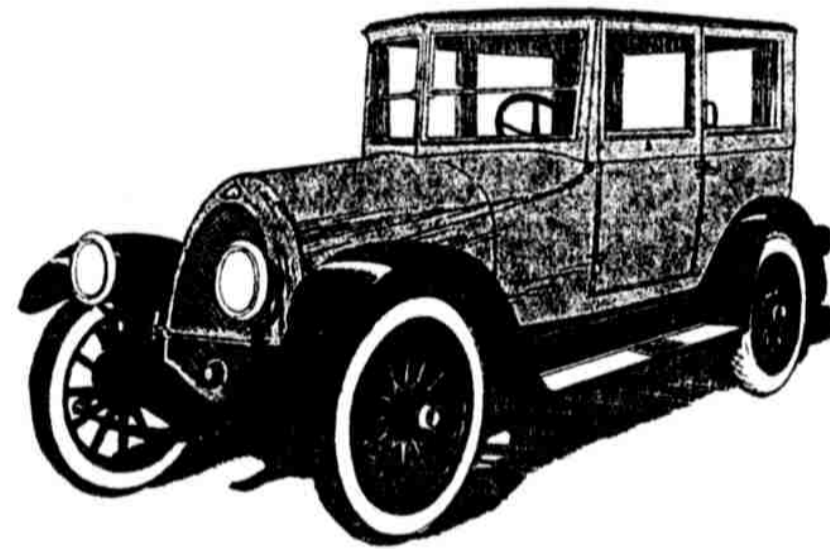
But suppose this pivot was enlarged the third part of a human hair, friction would be increased, causing a variation in the time-keeping qualities of the watch.

The Waltham Watch Company has created marvelous gauges that measure even the twelfth part of a human hair to determine these variations and eliminate errors unseen by the human eye in the works of a watch, which mean all the difference to you in dependability and value, giving another of those unanswerable reasons why your watch selection should be a Waltham.

The FRANKLIN

FRANKLIN owners are tire optimists because they have a right to be. Actual figures show that they average only one puncture in more than 4000 miles of travel, and less than one blowout to the life of a complete set of tires.

20 miles to the gallon of gasoline
12,500 miles to the set of tires
50% slower yearly depreciation
(National Averages)



Franklin Motor Car Co.

C. G. Heck, President

911-13 North Broad Street, Philadelphia, Pa.
Bell Phone—Poplar 4056-4057

Your Chance to Get a Guaranteed Used Car at a Bed-Rock Price



We have in our used-car stock several Oaklands that our expert mechanics have carefully gone over and put in first-class condition.

We are selling these cars, in a special two-weeks' sale, at a price that is absolutely rock-bottom, and that represents a really exceptional value.

Every one of these Oaklands is backed with the same 90-day guarantee and 30-day free service policy that accompany new Oakland Cars.

FOR EXAMPLE—

1921 Oakland Sedan, \$1525.00
(Same model new would cost \$2240.00)

We have also in our stock used cars of other makes in both closed and open models.

No matter what type of car you desire, you can find it here at a price lower than that usually asked. Come in today.

Terms, if desired

OAKLAND

Open Nights
OAKLAND MOTOR CAR COMPANY
918 North Broad Phone Poplar 407
Factory Branch