

For Thursday

Lucas "Defender Paints" are reliable—good for the handy person to use in fixing up the house. 80c a quart, \$1.50 a half-gallon, \$2.75 a gallon. —Gimbels, Fourth floor

# GIMBEL BROTHERS

MARKET · CHESTNUT · EIGHTH · NINTH

Don't let the lawn grass get too much of a start—it gets coarser as well as longer; harder to cut—more work for you! Lawn Mowers, \$7.75 to \$26.50. —Gimbels, Fourth floor

For Thursday

Tomorrow—  
**Subway Store**  
Sale of  
Used  
Sewing  
Machines  
at Gimbels

\$12  
\$15  
\$19  
\$35

Terms \$1 Weekly

An offering that every housewife should take advantage of. These machines are priced at less than it costs to make them.

Glance at these famous makes:—

**Singer, Domestic, Wheeler & Wilson, White, Lesing.**

These machines have been thoroughly overhauled and are now in perfect running condition. And guaranteed for satisfactory work.

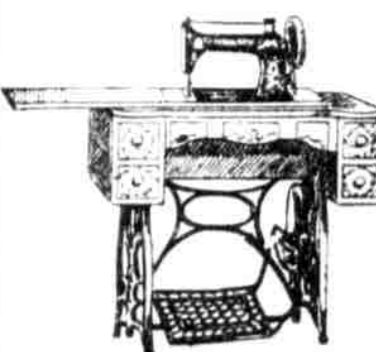
Guarantees are limited.



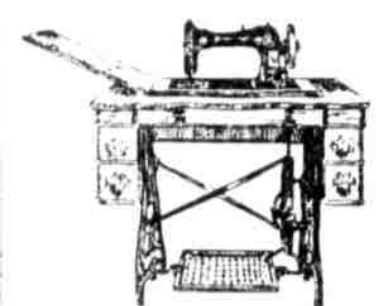
Singer, \$19



Domestic, \$19



Lesing, \$35



Wheeler & Wilson, \$12

—Gimbels, Subway Store

**New Willard Parlor Cabinets, \$49**

Domestic Sewing Machines, \$59

—Gimbels, Fourth floor

## For Tomorrow—Added These Beauties to the Dress-Sale

Just unpacked—just shaken out—just ready for tomorrow:

- 100 More Women's Canton Crepes at \$38—Half-Price
- 100 More Women's Canton Crepes at \$28—Half-Price
- 50 More Misses' Loop-Trimmed Taffetas at \$20—Half-Price
- 50 More Women's Serge Dresses—Entirely New Treatment—at \$20—Half-Price
- 50 More Misses' Canton Crepe Sports Dresses at \$28—Half-Price
- 100 More Misses' Canton Crepes at \$28 and \$38—Half-Price
- 50 More Women's Crepes de Chine Combined With Embroidered Georgette at \$28—Half-Price
- 100 More Women's Heavily Beaded Crepe-back Satins at \$20—Half-Price

Misses' sizes: 14 to 20—including many "Samples". Women's sizes 36 to 44, also many extra sizes up to 52½. —Gimbels, Salons of Dress, Third floor.



Women's Crepes Combined with Embroidered Georgette—\$28 Instead of Fringe—Loops, Misses' Taffetas—\$20

Tomorrow—500 More of Those  
**14-Pc. Ice Tea and Lemonade Sets of Light-Cut Glass**  
Value \$5 Each

At \$2.75



You will need one of these sets for serving the cooling summer drinks, iced tea, lemonade, grape juice, root beer, etc. There are three attractive patterns to choose from—each set including:

- 6 Twelve-ounce Glasses.
- 1 Two-and-one-half quart Covered Jug.
- 6 Colored Glass Sippers or Mixing Spoons (your choice).

7200 Colored Glass Sippers for drinking Ice Tea, Lemonade, etc. Splendid for children to drink their milk through. Novel help to get the older ones to take the detested daily portion. Regularly 10c each. Special

At 6 for 25c

**51-Piece Blue Bird Cottage Set, Including Necessary Dishes for Service of 6 People at \$9.95—Save \$5.** Vantive Incense in 3-oz. Tin Cans. Wistaria, Pine or Sandalwood. At 75c can.

100 styles of Incense Burners, 25c to \$25. —Gimbels, Fourth floor

Tomorrow—Sale of  
**All-Silk Crepes de Chine**

And it looks as though summer Fashion will use literally miles of it!

White, black, flesh, street shades, and the high sports colors—jade, tangerine, rose and Harding blue.

36-inch at \$1.68

40-inch at \$2.25

All-silk Shantung Pongees, 32-inch, } 95c natural color, at..... }  
—Gimbels, Silk Salons, Second floor

**Women's Fine Ribbed Union Suits**

Mostly Kinds That Sell for Half More Regular and Extra Sizes

Tomorrow at 65c

Low neck, sleeveless styles with tight or loose knee. White, 65c. And a small lot of women's pink Union Suits in tight-knee style. Regular sizes only. 65c.

Men's Union Suits of White Checked Nainsook, Made Especially for Gimbels, at 85c. Shirts and Drawers of Checked Nainsook, 65c Garment —Gimbels, First floor

Sale of 1500 Men's Highly Mercerized  
**\$3 Pajamas**

Tomorrow at \$1.98

Plain Colors Tan, Blue, Pink, Lavender, White



Just the thin light-weight material for Summer wear—highly lustrous finish.

Silk frogs.

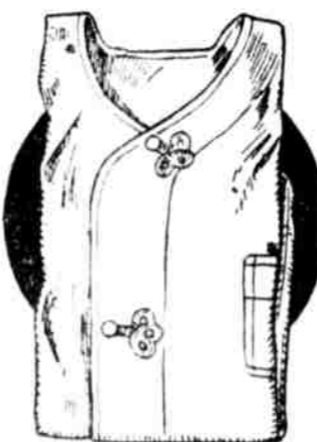
Ocean pearl buttons.

Correctly cut.

Carefully made.

Took all the maker had—hence the price, \$1.98 instead of \$3.

—Gimbels, First floor, Ninth Street. —Also Subway Store.



Sliced Pineapple : Peach Halves Value at 29c  
Hawaiian 50c  
—if bought in case, dozen, ½-dozen or 3-can lots.

**Other Specials in Pure Foods in the May Sale**  
St. James 50c Coffee THE PRIDE OF PHILADELPHIA 100-lb. Bag, \$28.50; 50-25-10- or 4-lb. lots, lb. 29c

**SUGAR** Philadelphia Refined for Preserving and Household Use if Purchased With Other Groceries. Limit 25-lb. Sack at lb. 6½c

Coffee—55c Quaker Blend— Same as served in restaurant; 25-, 10-, 5- or 3-lb. lots, lb., at 36c

Baltimore Coffee. Lord Calvert, steel cut, chaff removed, 3-lb. cans, special at \$1.38

Peach Jam, "Lenox" finest quality, close to half price. No. 3 sanitary cans, regularly 50c, cases, 1 doz. or 3-can lots, at can. \$29c

"Lenox" finest New York State tiny White Wax Butter Beans, No. 2 sanitary cans, dozen for \$2.50, or 3 cans for \$95c

"Lenox" finest New York State June Peas, No. 2 cans, cases at \$4.15, or dozen \$2.25, or 5 cans \$95c

"Lenox" Extra Sifted Peas, next to smallest size grown and packed, cases at \$7.25, dozen for \$1.38, or 3 cans for \$1.38

Hand-packed Tomatoes, "Lenox" Brand, could be used for frying, cases (2 dozen), dozen for \$1.95, or 3-can lots, can \$1.95

Maine Sweet Corn, "Lenox" brand, finest Baby Maine Corn, cases at \$4.65, dozen for \$2.35, or 5 cans \$1.38

Van Camp's Golden Yellow Pumpkins, big No. 10 cans, half \$1.25, price, 4 cans for \$5.00, can \$1.25

Wilson's No. 10 so-called gallon cans Apple Butter, less \$1.58c than wholesale, at can. \$1.58c

Jersey-grown cooked cut Red Beans or Navy Beans, big sanitary cans, half dozen lots, at can. \$1.25

Buy a Case—Fork and Beans—1000 cases of high-grade family-size cans, 15c value, in case (2 dozen) or dozen or half dozen \$1.25

Buy a Case—Creamy Crushed Corn—3500 cases of Gimbels Pure Food pack, close to half price; in case (2 dozen), dozen or ½-dozen, dozen lots at can. \$1.10c

—Gimbels, Pure Food Store, Chestnut Street Annex

Tomorrow—Subway Store  
**Linen-Finish Dress Gingham 15c yd.**

Splendid quality. So soft and in a wonderful variety of stripes, checks and plaids. Specially priced, 15c yd.

**New Yard-Wide Printed Percalé—18c yd.**

All fresh merchandise, full pieces in a splendid variety of striped and figured designs.

**36-inch Quilting Challis—18c yd.** Comes in a splendid variety of Oriental designs that are used so much for quilts and summer coverings.

**36-inch Irish Union Dress Linen—15c yd.**

Part linen and part cotton, but just the right weight for children's dresses and smocks. Comes in the following shades—pink, rose, Harding blue, reseda green and helio.

—Gimbels, Subway Store

**Large Bleached Turkish Towels 18c ea.**

Good absorbent quality, size 20x38 inches. Exceptionally good value, at 18c each. Regular value, 25c.

Guest Towels Made of a good quality of huckaback. Special for barbers, dentists and hotels or seashore use at \$1 10c each dozen, or.....

12,000 yards Heavy Cotton Crash Toweling, absorbent quality with neat red or blue border for } 12½c dish, hand or roller towels. Regularly 18c, now

Fine Hemstitched Mercerized (Cotton) Table Cloths, extra good quality, satin finish, size 72x72 inches. Several stripes and floral designs } \$1.85 were \$3 to choose from, at.....

—Gimbels, Subway Store

**Women's White Hemstitched Handkerchiefs—10c**

Corded and striped border. —Gimbels, Subway Store

A Wonderful Subway Sale of  
**Baby Clothes**

600 Children's Dresses—Half Price! Good firm gingham and chambrays, contrast-trimmed. Ages } 75c 2 to 6.....

Children's Bloomer Dresses—Remarkable values. Plain and checked gingham. } \$1.55 Ages 2 to 6 years.....

Children's Headwear Less Than Half Price.

Fine Straw Hats at \$1

Dainty lingerie Caps and Hats at 50c and 75c

Layettees—Complete Outfits for the New Baby—21 Pieces—Sale-Priced at \$6.95.

—Gimbels, Subway Store.



Inf. \$1 Dress, 75c

Tomorrow—Subway Store  
**Men's Collar Attached White Shirts—\$1.35**

Regularly \$2

Just 900 shirts in the lot! Many men are asking for these sports shirts which are of the wanted white oxford. We're fortunate in being able to offer such value at so low a price.

Collars button down, attached of course, button-down flap pockets and button cuffs. Just what you want for golfing, boating, all sports and even for business. Sizes 13½ to 17.

—Gimbels, Subway Store

**36-inch Satin—\$1.78**

The kind that's in demand

The glowing tawny shades that register warmth; and the sparkling blues and navy and the lovely deep rich browns; also black and a score of other wanted colors. At \$1.78.

Oriental Pongee at 95c yd. 33 inches wide. Natural color. Silk Taffeta, three wonderful shades of navy blue; the taffeta with the crisp and wonderful ruffles. \$2.28 yard —Gimbels, Subway Store