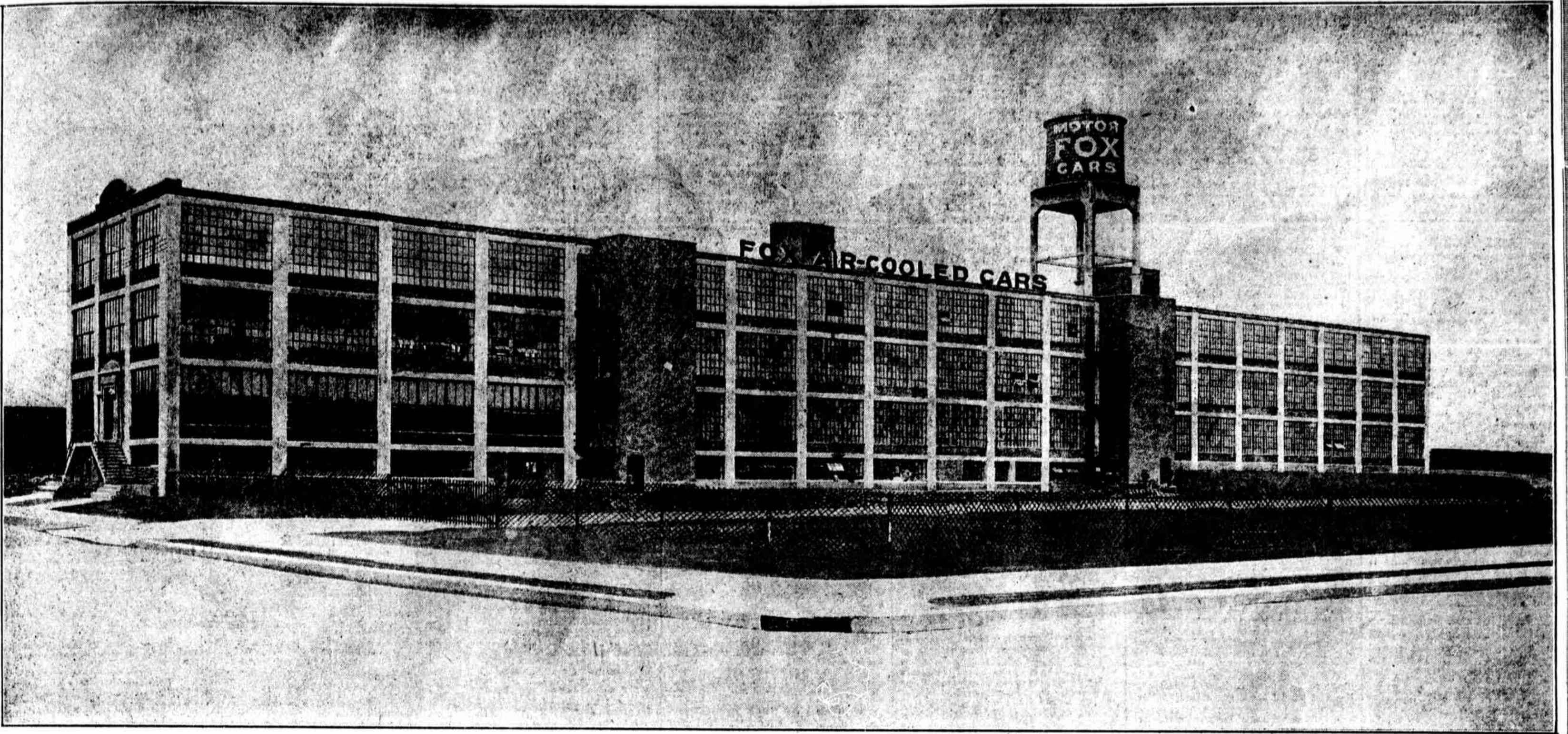


THE NEW BUILDING OF THE FOX MOTOR CAR CO.

MANUFACTURERS OF FOX AIR-COOLED CAR

7th ST. & GRANGE AVE., PHILADELPHIA



This building has been erected for the Fox Motor Car Company at 7th Street and Grange Avenue, Philadelphia. It will form the basis of the most modern Automobile Manufacturing Plant in the world. Having three stories and basement, with provision for future fourth story, it contains at present approximately 100,000 sq. ft. of floor space.

The construction is of reinforced concrete, flat slab type, with exterior brick walls and steel sash; thoroughly fireproof and having three fireproof stair towers.

The building is equipped with modern heating, plumbing and electric lighting systems and two electric elevators. It is also thoroughly protected with an up-to-date sprinkler system supplied from a 50,000-gal. tank on a tower above the roof.

A special spur has been constructed from the Reading Railway along the west side of the building and running alongside of a loading platform designed so that ten freight cars can be handled at one time. This loading platform is elevated so as to connect with the second floor of the building which will permit a most efficient system of routing of materials through their various processes to the finished product and the shipping of the finished cars.

This plan is designed in accordance with the most advanced engineering principles and is being equipped throughout with new individual drive machines. This is supplemented by the employment plan of the company, which provides maximum accommodation, protection and reward for the employees, and the combination will result in a plant which will be second to none in efficiency of operation and in the high grade of the finished product—the FOX AIR-COOLED MOTOR CAR.

FOLLOWING FIRMS ENGAGED IN CONSTRUCTION OF THIS BUILDING

Deslauriers Column Mould Co., Inc.
Woolworth Building, New York City
Philadelphia Office: Harrison Building
Steel Moulds for Concrete Construction
"Deslauriers" Moulds Used in This Building

JOSEPH HERZOG
STONE MASON
2632 W. Huntingdon St. Philadelphia, Pa.

E. L. CONWELL & CO.
Inspection Engineers
2024 Arch Street Philadelphia, Pa.

WRIGHT & WRIGHT
Electrical Engineers & Contractors
2215 N. Broad St., Philadelphia, Pa.

W. H. & G. W. ALLEN
Building Hardware
133 Market Street, Philadelphia, Pa.

HEATING SYSTEMS
Harry F. Murphy & Co.
1615 Sansom St.
Spruce 4201 Race 422
Philadelphia, Pa.

CLARENCE E. WUNDER
ARCHITECT AND ENGINEER
1415 LOCUST STREET
PHILADELPHIA
Spruce 4530 Race 5100

J. S. ROGERS CO.
BUILDERS
Philadelphia

JOSEPH F. CALHOUN
Painting
2646 N. Ninth Street Philadelphia, Pa.

HOLLOW TILE WALL COPING
FLUE LINING
WM. H. CLAUSEN CO.
27th and Diamond Streets
Philadelphia, Pa.

WOOD TANKS
E. F. SCHLICHTER CO.
10 S. 18th St. Philadelphia, Pa.

Structural Steel
C. C. HUMPHREYS
Front and Tusculum Streets, Philadelphia

1st to 1,000,000th DELIVERED QUICK
"Absolutely as we promise you"
SINCE 1891


SAND CEMENT
PEBBLES
Henry E. Strathmann
YARDS
Kensington and Lehigh
57th and Grays Ave. 8th and Olney Ave.
Kens. 239
Woodland 550
Wyoming 436

Bath Portland Cement
Used Exclusively on
This Building
**BATH PORTLAND
CEMENT COMPANY**
Philadelphia New York

Master Builders' Products
are the
World's Standard
**THE MASTER
BUILDERS COMPANY**
New York Cleveland Chicago
Philadelphia Boston Atlanta

Plumbing Supplies
FLECK BROS CO.
44-50 N. 5th Street
506 Arch Street
Sanitary Fixtures
Phila., Pa.
Balto., Md.

Boilers and Radiators
H. B. SMITH CO.
17th and Arch Sts.,
Philadelphia, Pa.
Spruce 3066 Race 2780

Glazing of Every Description

Phila., Pa.
Balto., Md.

25,000 Square Feet Carey "Built-up" Asphalt Roofing
Carefully laid, during winter weather, in a manner that will prove absolutely satisfactory.
American Insulation Co.
MANUFACTURERS DISTRIBUTORS CONTRACTORS
Roberts Ave. and Stokley St., Philadelphia, Pa.
