

For Wednesday

Store Hours, 9 to 5:30

Gimbel Shoe service is easily Philadelphia's best.

GIMBEL BROTHERS

MARKET & CHESTNUT STS. EIGHTH & NINTH

Yes, prices are down—and even more important, good qualities are restored.

For Wednesday

Subway Store Day—These Bargains Ready Wednesday Morning

What do these once-in-a-while "bargain days" in the Subway Store mean? This: Growth through service: great values in dependable goods every day—but really extraordinary values on "Subway Store Day."

Special Luncheon at 50c

Chicken or fish with vegetables. French roll-butter. Timbal of white potato. Puréed with cream. Creamed cold slaw. Pudding, pie or ice cream. Quaker brand coffee, tea or milk. —Gimbel's, "Subway Store Day"

\$2.38 Spring Taffeta—
\$2.50 Spring Satins—
\$2.25 Spring Crepe de Chine

\$1.55
a yd.

Today all at one price, \$1.55 a yard. All colors, 36 to 40 inches wide. —Gimbel's, "Subway Store Day"

Women's and Misses' Sweaters—\$2.95
Were \$4.95 and \$5.95
All wool Tuxedo, slipover, and tie-back models. Wanted colors. Sizes 36 to 44 in the lot. —Gimbel's, "Subway Store Day"

\$2 W.B. Corsets
—\$1.35

Low bust, moderately long skirts. White coutil material. At \$1.35. —Gimbel's, "Subway Store Day"

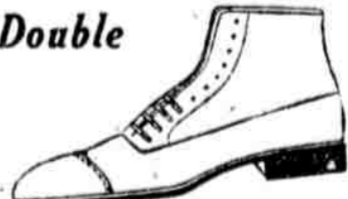
Soft, Thick Furry Fox Chokers at \$10
Summer neckpieces reduced to \$10, from \$15. —Gimbel's, "Subway Store Day"

All-wool Tweeds at \$2 yd.

34-inch. For the sports suit. 34-inch Black Sating Serge. at \$1.25 a yard. —Gimbel's, "Subway Store Day"

Men's Spring Shoes at \$3
Worth at Least Double

High lace and blucher styles in gunmetal leather and mahogany color leather, welted leather soles, broad and narrow toes. Sizes 6 to 11. At \$3. —Gimbel's, "Subway Store Day"



Fine Values in Women's Fashionable Low Shoes

At \$3 A Pair

Were in Stock, at \$6 to \$9

This is a "clean-up" of regular Gimbel lines to which special purchases have been added.

Patent leather, black kid and gunmetal oxfords, pumps and ribbon ties, welted and turned soles; high heels and low heels for growing girls. Also Baby French heels. Sizes 2 1/2 to 7. Prompt service. At \$3. —Gimbel's, "Subway Store Day"



A Subway Sale of Men's Spring Suits

608 in the Lot \$20 Values **\$35 to \$40 Values**

Clothing, like a diamond, must be closely examined to prove its true value. In other words it's bad business to judge a suit entirely by the price, as every clothing man knows. These suits at \$20 are absolutely the—

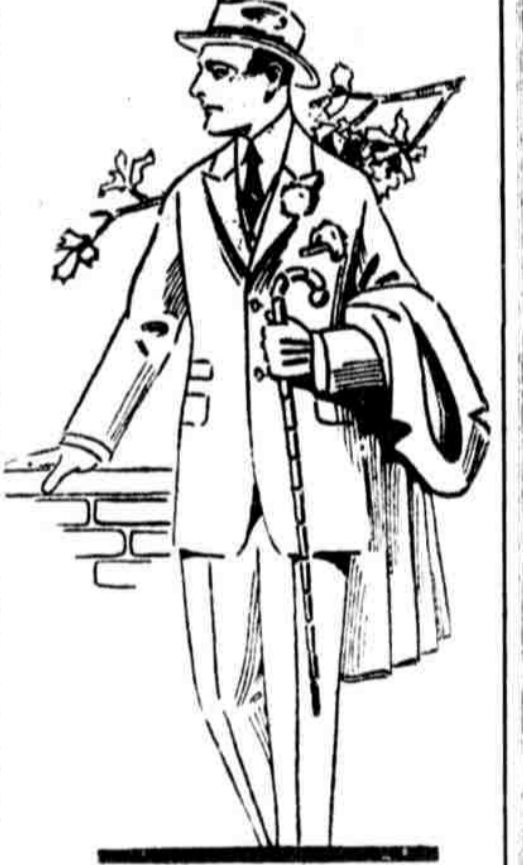
Best Values in Years

Newest 1921 models for both young men and maturer men.

Hand-tailored. Mostly silk-lined, others mohair-lined.

Choice of colors—blues, browns, grays and neat "pepper and salt".

Single- and double-breasted models in the season's prevailing materials—worsted, chevots, cassimeres and tweeds. All sizes. Plenty of salespeople at your immediate service. Every suit at \$20. —Gimbel's, "Subway Store Day"



Twenty-Five Smart Styles in Women's and Misses' Coats at

\$10 Values \$15 to \$17.50 and at **\$15 Values \$19.75 to \$29.75**

Capes, Dolmans, Sports Coats, Straight-line Coats, Coat-wraps, And cape-top Coats. Fringe-trimmed—the Spanish way. Or embroidered elaborate—some with a touch of gold. Velours, Silvertons, Belvias and the popular sports coatings. The new blites. The new tans. Misses' sizes 14 to 18. Women's, 36 to 44.

Ten Styles in Wool-Jersey Suits At \$12 Value \$19.75

Leather browns—and stone greens—and soft blues—and tans—and the strange lovely coloring they call "peppers" with half-dozen color-tints, adroitly blended into one. All sports models. Misses' sizes 14 to 18. Women's, 36 to 44.

Girls' \$10 to \$15 Coats at \$7.50

10 styles in 10 styles of soft tans and baby blues. Sizes 8 to 12.

Girls' \$2.50 to \$3.95 Dresses at \$1.75

10 styles—plain, checks and plaids—score of cute styles. 6 to 14 year sizes. —Gimbel's, "Subway Store Day"

20¢—Five Tons of Subway Blend Steel-Cut Coffee—20¢

a pound

1 lb., Counter Delivery; 5 lbs. or over, Free Delivery. Regular 35c Quality. No C. O. D.'s or Mail Orders.

1140 Men's Neglige Shirts, Special at 65c

These are especially selected from our regular stock—blended in soft and solid and solid and mixed goods. A tubbing will give them the best condition, less than we can possibly buy them today at 65c each.

Men's \$1 Full-grain Cowhide Belts—50c. These are solid one-piece leather belts with tongue buckle and fast with roller buckle. —Gimbel's, "Subway Store Day"

Save a Fourth on Silver-Plated Flatware

12" Dinner set 25c
10" Dinner set 22c
8" Dinner set 20c
12" Dinner set 25c
10" Dinner set 22c
8" Dinner set 20c
—Gimbel's, "Subway Store Day"

300 Samples and Over-Lots Silk Blouses \$2.45

Values, \$3.95 to \$5.95

—Gimbel's, "Subway Store Day"

Women's Full-fashioned Silk Stockings, at 85c

—Gimbel's, "Subway Store Day"

36-inch Mercerized Poplins, 28c yd.

—Gimbel's, "Subway Store Day"

27-inch New Checked Dress Gingham—18c yd. Worth 22c

—Gimbel's, "Subway Store Day"

800 Window Shades at 68c—Value 85c

—Gimbel's, "Subway Store Day"

3000 Yards Curtain Scrim at 12¢ yd. Save 25¢

—Gimbel's, "Subway Store Day"

Singer, Domestic, and Lessing Sewing Machines At \$35

Terms \$1 Weekly

These machines need no introduction. The names and prices tell the story. They are floor samples that have been thoroughly overhauled and are guaranteed to do sewing same as machines at double their price.

\$10 to \$15 allowance for your old machine toward the purchase of a Domestic Electric Boudier cabinet. —Gimbel's, "Subway Store Day"



Nightgowns and Envelope Chemises at \$1.50

Envelope chemises have lace back and front combined with embroidery and ribbon. Nightgowns have lace and embroidered yoke with clusters of tucks. Slip-over model short sleeves and ribbon.

Long Petticoats at \$1 and \$1.65. Lingerie ton-deep embroidery. Ribbon, specially priced for Subway Store Day. —Gimbel's, "Subway Store Day"

9x12 ft. Seamless Tapestry Brussels Rugs at \$16.25

Regularly Priced at \$22.50

Worsted face; floral and small all-over patterns. Slight weaving defects is the reason why these rugs are sale-priced at \$16.25 instead of \$22.50.

9x12 ft. Figured Japanese Grass Rugs \$5.25

Double wrap, pretty pattern, less than half price. Value \$11.50.

Mitred Tapestry Brussels Rugs \$11.25

Pretty patterns for sturdy wear. Value \$22.50. 9x12 feet.

Congoleum Remnants at 40c sq. yd.

Long lengths, two yards wide up to 500 sq. yds. of a pattern to match at 40c sq. yd. Value 75c. —Gimbel's, "Subway Store Day"

Waldorf Toilet Paper at 12 Rolls for \$1

—Gimbel's, "Subway Store Day"

50-lb. Cotton-and-Felt Mattress, \$10

—Gimbel's, "Subway Store Day"

Little Children's Rompers and Creepers—75c

—Gimbel's, "Subway Store Day"

Vestees at 68c and 85c

—Gimbel's, "Subway Store Day"

Bungalow Apron-Dresses at 85c

Made of neat figured percale—some gray in the lot. Buttoned down front, belt and short sleeves. At 85c.

Bungalow Aprons at \$1.75. Checked gingham, buttoned at side, wide belt, tie-back style, finished with rich tuck. —Gimbel's, "Subway Store Day"

2000 Yards Cotton Crash Toweling 12 1/2¢

Neat red and blue border, good absorbent quality, for hand, dish or roller towels. Exceptionally good value, at 12 1/2¢ yd. Was 18¢ yd.

Mercerized Table Cloths, 64-inch, round and square, hemstitched, at \$1.50. Regularly \$2.

Mercerized Cotton Napkins, neatly hemmed ready for use. Special for boarding houses and restaurant use at \$1.65 doz. Were \$2. Size 18x18 inches. —Gimbel's, "Subway Store Day"

Women's Silk and Fabric Gloves at 58c

—Gimbel's, "Subway Store Day"

A SMALL LOT OF Talking Machines \$39

Sold on Easy Terms

Slightly Used

—Gimbel's, "Subway Store Day"



20c Dress Shields at 15c a pair

Excellent value.

Favorite Spool Cotton at 38c dozen 3-cord

Lay in a supply for your spring sewing. Various sizes. —Gimbel's, "Subway Store Day"

Men's Topkis Athletic Shirts and Drawers—65c each

First quality.

Women's Athletic Union Suits, "firsts," at 95c

—Gimbel's, "Subway Store Day"

945 House Dresses at \$1.85

Were \$2.95

Striped and checked gingham, plain, chambray, straight or Billie Burke models, variously trimmed. Sizes 36 to 46. Excellent value at \$1.85. —Gimbel's, "Subway Store Day"

Suit Cases at \$2.50

—Gimbel's, "Subway Store Day"

Lining Remnants—29c a yd.

—Gimbel's, "Subway Store Day"

38-pc. Coin-Gold Decorated Dinner Sets—\$9.95

First Quality

Full Set for Six Persons. Open Stock

\$9.95

Save a Third

—Gimbel's, "Subway Store Day"

