

Penn Crews Race Yale Oarsmen Over the Henley Distance on Housatonic This Afternoon

SOUTHPAW BATSMAN HAS EIGHT-FOOT LEAD

He's Six Feet Closer to First Base Than Right-Hander and Swing Throws Him Two Feet More Toward Objective

By GRANTLAND RICE

Concerning the Anvil Chorus You'll find that most of them around would rather know how to swing than know the positions bars come thick.

The higher that you post; But you can gather in his ball no matter what the pitcher.

They rarely ever get a guy. They rarely ever matter much.

You'll find the Anvil Chorus rules The bulk of any map; You'll find that every few of them Pass up a chance to map it.

But you can take this to your soul And let it tally there. They rarely ever get a cover. Who doesn't get somewhere.

You'll find the game is quite inclined To kick in with a barb; No matter what the line-up is, No matter what the park;

But you can also figure this And let the tidings spread. They rarely ever get a guy. Who never shows his head.

Left and Right THLDEN and Johnston and most of the other leading tennis players are right-handed wallowers.

Nearly all good golfers are right-handed wallowers. Also, polo players. Why, then, numerous nonconformants have asked, are Sleser, Speaker, Cobb, Ruth, Collins, Young, etc., left-handed wallowers?

There is nothing very complex about this matter, at all. The wonder is that every young ballplayer doesn't blow himself from the ball and start out on a left-handed hitter.

For the left-hander in baseball is at least six feet closer to first base than the right-hander is. Six feet means a good long swinging stride. It is the margin by which numerous base hits are made—and the margin by which numerous runners are nailed at first.

The distance from the plate to first is only 90 feet. So the left-hander at his best has an advantage approximating 7 per cent, which, applied to 154 games, is colossal.

Another Help THE left-handed hitter carries still a further important margin. As he swings on the ball with a whirl from left to right, he is able to throw himself at top speed in the direction of his objective, meaning first base.

The importance of his swing easily means another foot or two.

The right-hander, upon the average,

WEST PHILLY HAS STAR TENNIS MEN

Speedy Raquet wielders Are Expected to Repeat as Net Champions

GEORGE FRINGS IS CAPTAIN

West Philadelphia High School is entertaining high hopes for its tennis team this year. The racqueters all are set for the team to emerge from the season once more with the crown of champion. The players this season are said to be fully as strong as the 1920 team. Captained by George Frings, they include as their chief stars as Charlie Watson, junior champion of Pennsylvania; Eric Wood and "Norm" Brommal.

The protégés of Coach W. A. Hurd, already have scored three victories. They have defeated Girard College, Villanova Prep. and Penn Charter. The first-named was easily beaten by the score of 2-1, while Villanova by the same count, and the Blue and Gold vanquished, 3-2, after a hard struggle.

Previous to 1919 the Penn Charter bunch had been roaming through the league year after year, winning titles with little difficulty. The other teams gave them little more than a run in matches, owing to the intricate tennis he had been taught by "Doc" West.

Philly stepped into the picture in 1919. In 1919 the Speedbys sent the Chargers down to defeat for the first time. They then followed by the covered crown. The following year the exact reverse happened. Penn Charter rolled the Westerners, but were noled out in the race for the title.

George Frings, the captain of the Western tennis team, and Harold Colburn are staging a hard fight for the first singles position. Both of these boys are expert netmen and rank high among the junior tennis players in the city.

Frings played the initial position at the beginning of the season, but was replaced by Colburn, after the latter had scored a 6-7, 7-5 victory. This match was played on the West Philly courts and was one of the hardest fought battles witnessed this year. Colburn's win came as a surprise to the crowd across the river.

Harold Colburn, George Frings, Jack Brommal and George Broadhead will play first, second, third and fourth singles, respectively, while Hanson Hodge and Jack Rust will take care of the doubles.

The Western aggregation has arranged a stiff schedule this year, as follows:

April 16, Lower Merion, 19; Camden High, away; 22, Haverford School, away; 26, Franklin High, home; 28, Central High, away; May 3, Northeast High, home; 5, Germantown Academy, home; 10, Upper 14, Episcopal Academy, home; 14, Episcopal Academy, home; 17, Episcopal Academy, home; 20, Episcopal Academy, home; 23, Episcopal Academy, home; 26, Episcopal Academy, home; 29, Episcopal Academy, home; May 1, Episcopal Academy, home; 4, Episcopal Academy, home; 7, Episcopal Academy, home; 10, Episcopal Academy, home; 13, Episcopal Academy, home; 16, Episcopal Academy, home; 19, Episcopal Academy, home; 22, Episcopal Academy, home; 25, Episcopal Academy, home; 28, Episcopal Academy, home; May 31, Episcopal Academy, home.

Scholastic Baseball Records

Year	W	L	Pct.
1918	19	11	.633
1919	16	14	.533
1920	18	12	.600
1921	15	15	.500

Yankee Series Results
 Germantown High, 13; Southern High, 0.
 West Philadelphia, 4; Catholic High, 7.
 Episcopal Academy, 1; 1,000 Northeast, 0; 3,000 Central, 1

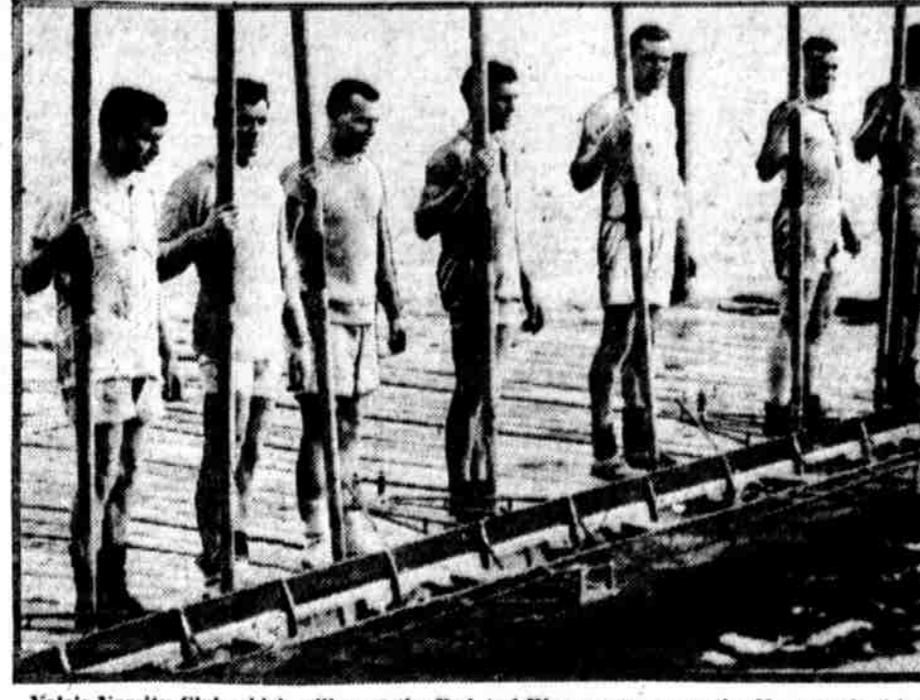
W. L. Pct.
 D. Charter 1; 0, 1,000 Germantown, 0; 1, Penn Charter, 2; Germantown Acad., 3.

Other Scores
 Episcopal Acad., 12; Friends' Central, 2.
 Chestnut Hill, 5; Friends' Prep, 5.
 Northwood High, 7; Upper Darby, 6.
 Abington, 4; Germantown Friends', 3.
 Collingswood High, 20; Hightstown High, 3.
 Moorestown, 10; Central Penn, 5.

TODAY'S SCHOLASTIC SCHEDULE
 Baseball
 Chester High at Villanova Prep.
 West Catholic High at Conestoga High.
 Textile at Girard College.
 Lightfoot High at Girard College.
 Central High at Princeton Fresh.
 Lower Merion High at West Phila. High.
 Philadelphia at Girard College.

Intercollegiate League
 Villanova Prep. at Penn Charter.
 Episcopal Acad. at Friends' Central.
 Chestnut Hill at Friends' Prep.
 Northwood High at Upper Darby.
 Abington at Germantown Friends'.
 Collingswood High at Hightstown High.
 Moorestown at Central Penn.

WILL ROW AGAINST PENN



Yale's Varsity Club which will meet the Red and Blue oarsmen on the Housatonic this afternoon. Left to right, Whitney, Carman, Haldeman, Martin, Gibson, captain; Hord, Mall, Hearnway.

PENN MEETS YALE IN SHELLS TODAY

Joe Wright's Sweep Oarsmen Have Weight on Opponents. Race on Housatonic River

WEATHER CONDITIONS POOR

Derby, Conn., April 16.—The crews representing the University of Pennsylvania and Yale are all set for their regatta this afternoon on the Housatonic river, which opens the rowing season for each university. Conditions this morning were about as poor as they could be for rowing, but there was hope that they would improve before 4:15 p. m., the time of the first race.

At that hour the second crews were scheduled to meet and the varsity event was not to take place until after 5 o'clock.

In spite of a heavy fog the four crews took a short workout on the Housatonic river this morning.

Pennsylvania's varsity will be stroked by Eddie Mitchell, who is one of the lightest strokes that ever worked in a Penn-Boat shell. He weighs but 143 pounds. However, his rowing has been so good that Joe Wright feels that he has selected the proper man to lead the varsity in their annual tilt with the Eli eight.

The Red and Blue's chances against Yale are none too bright because a number of Wright's "scowps" will row their first varsity race. In former years Yale has had the better of the annual battles on the river in 1886, Yale winning four times in succession at Bridgeport, Conn. For the next twelve years there were no races, but in 1902 relations were renewed and Yale won that year on the Schuylkill at Philadelphia. Again relations were severed and there were no more races until 1909. In the eight races from that year Pennsylvania has won five and Yale three.

The junior eight of Pennsylvania will row the varsity "scowp" (Coastal), No. 7. Guenther, No. 6; Rugh, No. 5; Rosenburgh, No. 4; Singer, No. 3; Loosen, No. 2; Darby, bow, Roberts; coxswain, Gillier, No. 1.

Yale's second varsity has been placed as follows: Stroke, Leslie, No. 7; Spooner, No. 6; Fayson, No. 5; Crowley, No. 4; Bonebrake, No. 3; Dilworth, No. 2; Pelly, bow, Russell; coxswain, Hadden.

How Penn and Yale Varsity Crews Compare

Crew	Weight	Height	Age
Stroke—E. P. Mitchell	143½	5'10"	20
1—H. A. Waister	148	5'11"	21
2—W. B. Chambers	168	5'11"	21
3—L. H. Harnam	155	5'10"	21
4—E. Wheeler	150½	6'	19
5—C. E. Carman	160½	5'11"	22
6—P. T. Williams	165	5'10½"	22
7—S. L. Jellinek	160½	5'11"	22
8—J. H. Thomson	163	5'9"	21
9—Sub-G. H. Miller	168	6'	18

MARSHALL PROVES ENIGMA TO PENN

William and Mary Twirler Holds Coach Cariss' Sluggers to Five Scattered Hits

Pennsylvania ran into another South-eastern slug yesterday afternoon, when the William and Mary baseball team stubbed the Red and Blue for the first time in the last six games, 4 to 2. In football the Penn management figured that they were getting a set-up or a practice eleven when they scheduled V. M. I. for a game. History has repeated itself as the visitors proved just the opposite to what was expected.

They brought along with them one of the best pitchers seen on Franklin Field this season in Dewey Marshall, twenty-three years old and six feet one inch tall. There is little wonder that several big league scouts were seated in the stands to watch his work. He had everything that a pitcher should have—a wonderful control, biting speed and a knockout on his fast ball that nearly broke the backs of Dr. Cariss' Penn aggregation. He held Captain Herman Harvey and his slugging teammates off widely scattered bingles, and when men were on bases he proved an absolute enigma. Mel Schriver made the only extra base blow off the Blue Southerner, a double, when he hit home on a fly ball.

Mourrain, Harvey and Hinkel scored the other swats off Marshall, all of the one-base variety.

WOMEN GOLFERS OPEN 1921 SEASON

Begin Play in Team Matches for Suburban and Wallingford Cups

NEW ENTRANTS WINNERS

Although the weather man did not do kindly with persons who sought diversion on the links yesterday, the women golfers of this city did not allow a little thing like that to interfere with their plans and they went right ahead and opened their season.

Play began in the team matches for the Suburban and Wallingford Cups. Fine golf weather that arrived early this season allowed the women players to prepare for the matches. That they had taken advantage of the opportunity furnished them was evidenced by the spirited contests.

In the Suburban Cup competition Merion, 2d, had a close battle with West Chester, the former team winning by 3 matches to 2. The Philadelphia Cricket Club emerged the victor over Overbrook with a string of five triumphs. Bala nosed out North Hills, 3 to 2; Whitman's captured four of the five hills from St. Davids. Old York Road won from Woodbury, 4 to 1.

Beginning of the season for the Wallingford Cup was marked by the return of the Country Club, of Lansdowne, to interclub golf. The Lansdowne team celebrated its return by defeating the second team of the Philadelphia Country Club, 4 to 1. Torresdale, one of the new entrants into the series, got off to a flying start by winning from Overbrook, 2d, 4 to 1. Springfield took three of the five contests from Cedarbrook and Lansdowne with a string of York Road, 2d, 4 to 1.

It is noteworthy that Old York Road and the second teams of the Philadelphia Cricket Club and the Merion Cricket Club, the three new combinations in the Suburban League, made their first appearance in the series successful by winning their matches. Old York Road was formerly in the Philadelphia Cup competition, but lost its place to the Country Club last year.

Game With "Black Sox" Canceled
 Chicago, April 16.—Officials of the Commission on the Negro League, today had the last word in the controversy over a game scheduled for Saturday at the Chicago Stadium. A semi-professional baseball club of the Chicago League, known as the "Black Sox" had been organized by the Chicago League, and it was announced that the game was to be played on its own, and the Negro League would not be interested.

ATHLETIC FACILITIES FOR STUDENT BODIES URGED

New Yale President Also Seeks to Change Attitude Toward Sports

New York, April 16.—Dr. James R. Angell, the recently elected president of Yale, speaking last night at a dinner tendered him by Yale alumni, stated that there were two pressing needs in collegiate athletics. These, he said, were a wide provision for athletic facilities for the student body and a substantial change in the academic attitude toward intercollegiate athletics.

The attitude of college faculties has been left to be almost repressive, and, in view of certain of the abuses from which intercollegiate athletics have sprung, this attitude has probably been justified and perhaps unavoidable," he said.

But the time has certainly come to attempt on a larger scale a change in the educational and moral values which are inherent in intercollegiate athletics and to see that they are as sedulously sought and cultivated as any other educational values."

BOWL BY TELEGRAPH

Thirty Teams Will Compete in Novel Event Tonight

Thirty teams, representing offices of the American Telephone and Telegraph Co. in twenty cities will compete in a bowling tournament tonight. The teams will bowl in their respective cities, with the results being telegraphed to the headquarters office.

Teams from Philadelphia, Reading, Allentown, Hightstown, Atlantic, Baltimore, Camden, Hartford, Lanesburg, New Haven, Cleveland, Scranton, Toledo, Harrisburg, Davenport, New York, Syracuse, Boston, St. Louis, Terre Haute, Des Moines, Omaha, Minneapolis, Kansas City and Indianapolis will take part.

Southworth Named Braves' Captain
 Boston, April 16.—Bill Southworth, formerly of the Pittsburgh club and now right fielder of the Boston National League team, was named captain of the Braves by Manager Fred Mitchell to replace "Bobby" Moran, who has been traded to the Philadelphia Phillies. Moran will be replaced by Pittsburgh's Gus Getzen.

To Stage Motor Races

An entanglement of the old Philadelphia Motor Club Association has been reorganized, and its first meet set for Pottstown on May 7.

Amateur Sports

White Elephants would like to arrange game with all amateur teams in area

Letter for Bill Haefner

United States Shipping Board Offers Three Tugs for Sale

Atlantic City Vacation

Will Appeal Landis' Decision

Levisky Defeats Dan O'Dowd

Game With "Black Sox" Canceled

Letter for Bill Haefner

United States Shipping Board Offers Three Tugs for Sale

Atlantic City Vacation

Will Appeal Landis' Decision

Levisky Defeats Dan O'Dowd

Game With "Black Sox" Canceled

Letter for Bill Haefner

United States Shipping Board Offers Three Tugs for Sale

Atlantic City Vacation

PENN MEETS YALE IN SHELLS TODAY

Joe Wright's Sweep Oarsmen Have Weight on Opponents. Race on Housatonic River

WEATHER CONDITIONS POOR

Derby, Conn., April 16.—The crews representing the University of Pennsylvania and Yale are all set for their regatta this afternoon on the Housatonic river, which opens the rowing season for each university. Conditions this morning were about as poor as they could be for rowing, but there was hope that they would improve before 4:15 p. m., the time of the first race.

At that hour the second crews were scheduled to meet and the varsity event was not to take place until after 5 o'clock.

In spite of a heavy fog the four crews took a short workout on the Housatonic river this morning.

Pennsylvania's varsity will be stroked by Eddie Mitchell, who is one of the lightest strokes that ever worked in a Penn-Boat shell. He weighs but 143 pounds. However, his rowing has been so good that Joe Wright feels that he has selected the proper man to lead the varsity in their annual tilt with the Eli eight.

The Red and Blue's chances against Yale are none too bright because a number of Wright's "scowps" will row their first varsity race. In former years Yale has had the better of the annual battles on the river in 1886, Yale winning four times in succession at Bridgeport, Conn. For the next twelve years there were no races, but in 1902 relations were renewed and Yale won that year on the Schuylkill at Philadelphia. Again relations were severed and there were no more races until 1909. In the eight races from that year Pennsylvania has won five and Yale three.

The junior eight of Pennsylvania will row the varsity "scowp" (Coastal), No. 7. Guenther, No. 6; Rugh, No. 5; Rosenburgh, No. 4; Singer, No. 3; Loosen, No. 2; Darby, bow, Roberts; coxswain, Gillier, No. 1.

Yale's second varsity has been placed as follows: Stroke, Leslie, No. 7; Spooner, No. 6; Fayson, No. 5; Crowley, No. 4; Bonebrake, No. 3; Dilworth, No. 2; Pelly, bow, Russell; coxswain, Hadden.

Amateur Sports

White Elephants would like to arrange game with all amateur teams in area

Letter for Bill Haefner

United States Shipping Board Offers Three Tugs for Sale

Atlantic City Vacation

Will Appeal Landis' Decision

Levisky Defeats Dan O'Dowd

Game With "Black Sox" Canceled

Letter for Bill Haefner

United States Shipping Board Offers Three Tugs for Sale

Atlantic City Vacation

Will Appeal Landis' Decision

BRILLIANT OPENING AT HAVRE DE GRACE

Dunboyne, Billy Kelly and Paul Jones to Meet in Handicap Today

PHILADELPHIANS TURN OUT

Havre de Grace, Md., April 16.—One of the best cards ever offered at any race course has been prepared for the Havre meet, opening here this afternoon, bringing together such stars as Dunboyne, Billy Kelly, Paul Jones, Jennings Park, Careful, Tiptopy, Witcheit, Dr. Clark and many others.

The impression given at the trackside, viewing the eager throngs on hand for the opening, is that Havre de Grace is a suburb of Philadelphia, so large is the representation from that city.

Havre de Grace starts its spring meeting with thirteen racing days, with the Havre Handicap, six furlongs, for \$5000, as the feature. Some of the star three-year-olds, even Derby candidates like Careful and Star, meet the older champions, one of which himself is a Derby winner.

Billy Kelly, coupled with Star Vortex, is the J. K. L. Ross entry in the handicap, and carries a top weight of 130 pounds. It is to be doubted if Kelly can give weight to Dunboyne, which has been working fast in New York. There is really little line on the present form of a number of the horses in this race; but it would appear that Dunboyne should rate favorite, with the Ross entry and Paul Jones furnishing the competition. Careful is entered in another race and cannot be considered as favorably in the feature as in the Chester Purse, the third race at which the boys should meet without a grueling contest. Sailing B. and Faunas are other sprightly ones in the Chester.

The first race is for maiden two-year-olds. The match colt, Elemental, of the Ross stable, a first starter, doubtless will be choice here. The crowd playing the Kentucky and the Golden entry and Lally, Orleans, Girls, Flying Orb; fifth—Tiptopy Witcheit, Milkmaid, Captain Herschler, sixth—Star Vortex, seventh—Swain, Madge; eighth—Claquer, Benevolent, Pitt.

Snowstorm Prevents Chicago Ball Game

FRENCH RELAY TEAM ARRIVES IN NEW YORK

MONTREAL BEATS HERMAN

Chicago, April 16.—Thousands of fans will not today to take a Saturday afternoon off and see the Cubs play the St. Louis Cardinals. Their arrangements, however, were ruined by a heavy snow storm which knocked the bottom out of spring and cleared the city with a white canopy.

George Alexander who was the opening game of the season, was scheduled to pitch again today.

New York, April 16.—The French relay quartet, which is scheduled to meet the cream of American college one-mile teams at the Pennsylvania relay last Friday and Saturday of this month, disembarked here this morning at 9 o'clock from the La France of the French line. Delvert, Ferry, Mercery and Sourin, considered four of the fastest quarter miles in the land of the Boies, compose the team. Murosek Kromka, chairman of the Track Committee of the University; Anthony Geyelin, Manager Bill Seidel, of the Penn team; Earl Eby, captain of the track team, and several students met the Frenchmen. Eby arrived here last night to facilitate the entry of the visitors through the customs.

STEAMSHIP NOTICES

LUCKENBACH LINES

PHILADELPHIA TO SAN DIEGO—LOS ANGELES—SAN FRANCISCO—PORTLAND—TACOMA—SEATTLE

S/S HARRY LUCKENBACH April 23
 S/S K. I. LUCKENBACH May 5

Seattle—Tacoma—Portland—San Francisco—Los Angeles—San Diego—Philadelphia

S/S PLEIADES April 20
 S/S KATRINA LUCKENBACH May 5

Philadelphia to Rotterdam

S/S HATTIE LUCKENBACH April 27

Philadelphia to Hamburg

S/S FLORENCE LUCKENBACH April 21

Rotterdam—Philadelphia

S/S F. J. LUCKENBACH April 24

Hamburg—Philadelphia

S/S F. J. LUCKENBACH April 28

LUCKENBACH STEAMSHIP COMPANY, INC.
 LAFAYETTE BUILDING, PHILADELPHIA
 LOMBARD 5340

MARINE DESPATCH LINES

Atlantic, Gulf & Pacific S. S. Corp.

S. S. LIBERATOR

Docking Pier 40 South Wharves
 Philadelphia, April 8th

NOW RECEIVING CARGO FOR
 LOS ANGELES, SAN FRANCISCO, SEATTLE AND PORTLAND
 FOR PARTICULARS AND RATES APPLY:

Atlantic, Gulf & Pacific S. S. Corp.

Lombard 3346 130 SOUTH THIRD STREET, PHILADELPHIA

NOTICE: All ship business will be transacted at the above office. No one is authorized to act for an individual ship or for the corporation in any other office, of the Atlantic, Gulf & Pacific S. S. Corp. in any particular city, through the representative of the corporation at the above office.

CUMMINS LINES

U. S. Shipping Board Steel Steamers
 Regular Freight Service

PHILADELPHIA TO HAMBURG & BREMEN

S/S "SHORTSVILLE" Loading

PHILADELPHIA TO ANTWERP & ROTTERDAM

S/S "ARIZPA" April 20

For space and rates apply
 A. D. CUMMINS & CO., Inc.
 139 South 4th St., Phila., Pa.
 Lombard 4127-4128-5467; Main 1348

EARN-LINE

Incorporated 1891
 U. S. Shipping Board Steel Steamers
 Regular Freight Service

PHILADELPHIA TO HAVANA

S/S "COQUINA" April 20

For Space and Rates Apply
 EARN-LINE STEAMSHIP COMPANY
 Bullitt Building, Phila., Pa.
 Lombard 5200-5201-5202-5203 Main 3544-3545

GREAT EASTERN RAILWAY

OF ENGLAND

CATHEDRAL ROUTE

East Atlantic Home of the 15, 20 and 25 mph. Electric and Traction Units.

THE FELIX HOTEL

FELIXSTOWE, ENGLAND
 The most magnificent apartment establishment on the coast of England, owned and managed by the Great Eastern Railway Company. Illustrated brochure on request.

HARWICH ROUTE

England to the Continent
 via HARWICH & HOOK OF HOLLAND
 also via HARWICH and ANTWERP
 New Service Commencing June, 1921
 DIRECT TO BATTLEFIELDS VIA HARWICH ZEBRUGGE
 Luxurious Steamers Pullman Car Trains
 Apply for illustrated booklet "The World via Battlefields of Belgium and France"
 R. H. Ketchum, Gen. Agt.
 311 Ritten St., 1st. 333 S. W., New York

CUNARD ANCHOR

Passenger and Freight Services

From New York

Ship	Destination	Departure
Cherbourg	ANTWERP	May 12
Cherbourg	BREITENBURG	May 12
Cherbourg	LIVERPOOL	May 12
Cherbourg	LONDON	May 12
Cherbourg	BRISTOL	May 12
Cherbourg	BATON	May 12
Cherbourg	BREITENBURG	May 12
Cherbourg	BREITENBURG	May 12
Cherbourg	BREITENBURG	May 12
Cherbourg	BREITENBURG	May 12
Cherbourg	BREITENBURG	May 12

BLACK DIAMOND STEAMSHIP CORP.

PHILADELPHIA to Rotterdam

Am. S/S "Edgemont"
 Expected to sail early April

PHILADELPHIA to Rotterdam

Am. S/S "Chester Kivanis"
 Expected to sail early April

Harris, Magill & Co., Inc.
 425 Lafayette Bldg., Philadelphia
 Lombard 3520-1 Main 1973

ERICSSON BOAT

FOR BALTIMORE
 \$2, one-way fare; \$3, round-trip fare
 Balto to Phila., 3 o'clock Saturday.
 Phila to Balto, 10:30 a.m. Sunday.
 Send for Pamphlet.

HOLLAND AMERICA LINE

New York to Rotterdam
 RYNDAM Apr. 25
 NORDAM Apr. 30
 ROTTERDAM May 21

Via Plymouth and Boulogne-sur-Mer
 Rotterdam Office, 1521 Walnut St., Phila.