

MOVIEGRAMS FROM SCREEN TO PATRON

CLAY'S CELEBRITY, leading comedy for Thomas Meighan in "The Easy Road," which commences its second week...

A "CAREY WALK" scene which forms the first act of the picture "The Easy Road"...

MARY MORRIS, the young beauty, in "The Easy Road"...

GLADYS DEBELL, the young beauty, in "The Easy Road"...

HELVET BOISWORTH, the young beauty, in "The Easy Road"...

DREAM STREET, the young beauty, in "The Easy Road"...

DUMONT'S, the young beauty, in "The Easy Road"...

STARS OF THE SILVERSHEET AT LOCAL FILM HOUSES



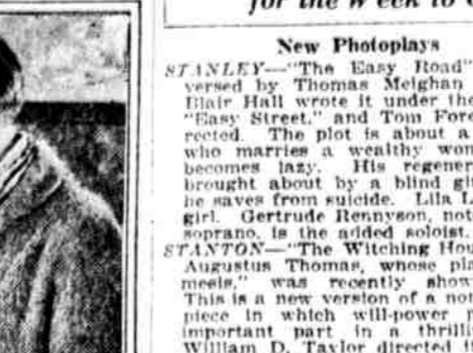
THOMAS MEIGHAN, THE EASY ROAD, Stanley



DAVID BUTLER, THE COUNTY FAIR, Capitol



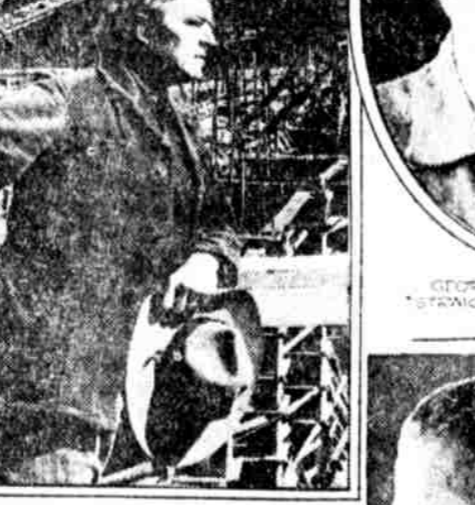
KATHERINE MACDONALD, CURTAIN, Atogony



VAL DANA, DONDE ELLA'S TWIN, Regent



WALLACE REID, THE LOVE SPECIAL, Palace



JOSEPH PARNIS, STRAIGHT IN THE WAY, Arcadia



GEORGE FITZMAURICE, THE PALACE OF THE GREEN WINDOW, Monday



Mlle. ANNA CODEE, THE BIGGEST SHOW ON TOUR, Shubert



JIMMIE HUSSEY, THE BIGGEST SHOW ON TOUR, Shubert



MAE WEST, THE BIGGEST SHOW ON TOUR, Shubert

Guide to Photoplays for the Week to Come

New Photoplays: STANLEY—"The Easy Road" is re-released by Thomas Meighan as star...

STANTON—"The Witching Hour" is by Augustus Thomas, whose play, "The Witching Hour" was recently shown here...

ARCADIA—"Straight in the Way" is directed by Robert G. Vignola from the story, "The Manifestations of Henry Ott" by Ethel Watts Mumford...

VICTORIA—"His Own Law" is one of J. Parker Read's plays which has been produced by the Victorians...

REXENT—"Cinderella's Twin" is Viola Dana. The story is about a scullery maid who goes into a modern home to find work...

REVIEWED HERETOFORE: PALACE—Wallace Reid in "The Love Special"...

THEATRE: CHESTNUT ST. OPERA HOUSE MAT. TODAY. LAST WEEK WHIRL OF THE TOWN...

SHUBERT LAST WEEK SENSIBLE PRICES NIGHTS (except Sat) SEATS \$2.50-MATS. SAT. \$1.50-\$2.00...

GREENWICH VILLAGE FOLLIES 1920. Devised and Staged by JOHN MURRAY ANDERSON...

ACADEMY OF MUSIC MASK & WIG CLUB. UNIVERSITY OF PENNSYLVANIA WILL PRESENT A SPECIAL PERFORMANCE OF THIS YEAR'S SUCCESS...

SOMEbody's LION. Friday Evening, April 29th. Seats April 22, Honor's, 1110 Chestnut St.

ROSELAND DANCING. Broad and Columbia. Columbia 3144. Continuous Dancing. TONIGHT.

ROSELAND DANCING. 1015-17 Market St. Bargain Matinee Today. Admission 20c. Walnut 7537.

ICE-REVUE-ICE. TONIGHT AT 8:30. Private Instruction. Diamond 2925. Diamond 2940.

FORREST—Pop. Mat. Today. ZIEGFELD FOLLIES. SEATS SELLING FOR NEXT WEEK.

"Hush" first half, Curwood's "Nomads of the North" last half. ALHAMBRA—Berbe Trangle in "Oh, Lady Lady" first half, "Milestone" last half.

GREAT NORTHERN—Ours Skinner in "Kismet" first half, "The Sign That Stayed in 'Powerful Valley' last half.

STANTON—Dorothy Dickson in "Paying the Piper". LOCUST—Thomas Meighan in "The Frontier of the Stars".

RIVOLI—"Paying the Piper" first half, May Allison in "The Marriage of William Ashe" last half.

LEADER—Ours Skinner in "Kismet" first half, Cecil DeMille's "Forbidden Fruit" last half.

RELMONT—Norma Talmadge in "Fanchon". COLLEGE—"Forbidden Fruit" Monday and Tuesday.

WEDNESDAY: Matt Moore in "The Passionate Pilgrim" Thursday and Friday. "The Inner Voice" Saturday.

CECILE—"The Palace of the Green Window" Monday and Tuesday; William Faversham in "The Sign That Stayed in 'Powerful Valley' Wednesday and Thursday; Ralph Ince in "Out of the Snows" Friday and Saturday.

MOVIE HOUSES CUT PRICES. Several of Stanley Company Theatres Blaze Trail.

Jules E. Mastbaum, for the Stanley Co., makes the announcement that beginning Monday there will be a slight reduction in the admission charges at the Arcadia, the Stanton, the Palace and the Victoria, with a corresponding lowering of prices at the neighborhood houses, wherever such action may be possible.

This lowering of admission rates does not apply to the new Stanley, which, it is believed by the Stanley Co. directors, cannot maintain the present quality of attractions at prices lower than those prevailing in the neighborhood.

The company anticipated that the near future would bring about conditions which must necessarily be accepted by amusement managers in all other lines of commerce and trade.

"When one realizes that the war brought about a raise in some of the prices of 400 per cent in the prices of things, one can readily understand why we have not been inclined to reduce prices of admission until now. However, I feel that inasmuch as the public is called upon to pay every excess charge and that our patrons are so appreciative of everything we have done in their behalf and will continue to do that we must extend to them every consideration. That is why we have decided to shade down our prices in some of our theatres at this time."

"Few people, I dare say," continued Mr. Mastbaum, "have ever given a thought to the fact that the motion picture theatre records in the aggregate almost two hours of amusement for old and young—and in many cases considerably more than that time—and at prices which are ridiculously low."

Art in Greenwich Village Follies. The gorgeous production of the Greenwich Village Follies, 1920, will be presented April 18 by the Bohemians, Inc., at the Shubert.

The entire production was devised and staged by John Murray Anderson, the dialogue is by Thomas J. Gray, the lyrics by John Murray Anderson and Arthur Swanstrom, the music by A. Baldwin Sloane.

One of the remarkable things about this "revue" comedy of New York's Latin Quarter, is the artistic element that dominates.

The "episode of the Benda masks" is considered one of the most esthetic contributions given the American stage in recent years. The masks were designed by W. T. Benda, the noted American artist, and Miss Margaret Severn dances in them as though she had tripped through centuries, leaving the tragedy and comedy of the world at her heels.

CHESTNUT ST. OPERA HOUSE MAT. TODAY. LAST WEEK WHIRL OF THE TOWN. Messrs Shubert's Century Promenade Revue. THE BIGGEST SHOW ON TOUR. Mlle. ANNA CODEE FROM HOLLES BEAUREGARD. JIMMIE HUSSEY BRENDLE & BERT MAE WEST GEORGE PRICE WM MORAN - ALBERT WISER - CLARENCE HARVEY JACK STROUSE - ARTHUR BOYLAN - LOU EDWARDS FRANK ORTH - PAUL O'NEILL - MARGUERITE FARRELL BETH STANLEY ROSE BOYLAN AND 100 CENTURY BEAUTIES 100 PRE-WAR PRICES FOR ALL PERFORMANCES (EXCEPT SATURDAY NIGHT) \$1.50-\$1.00-50¢ SHUBERT LAST WEEK SENSIBLE PRICES NIGHTS (except Sat) SEATS \$2.50-MATS. SAT. \$1.50-\$2.00

Sam Bernard and Irene Bordon! AS YOU WERE. From the Garden of Eden to the present Day. BEGINNING APRIL 18 LIMITED ENGAGEMENT DIRECT TO PHILADELPHIA FROM 8 MONTHS IN NEW YORK. Devised and Staged by JOHN MURRAY ANDERSON. BOHEMIANS INC. GREENWICH VILLAGE FOLLIES 1920

D. W. Griffith will present "DREAM STREET" A Dramatic Comedy—His first production since "Way Down East" OPENING NIGHT MONDAY, APRIL 18th CHESTNUT ST. OPERA HOUSE SEAT SALE THURSDAY

Chestnut St. Theatre. WHIRL OF THE TOWN. SAM SHUBERT MATINEE TODAY TONIGHT Sam Bernard and Irene Bordon in "AS YOU WERE". ADELPHI MAT. TODAY TONIGHT AT 8:20 THE BRIGHTEST & MOST SUCCESSFUL "ADAM & EVA". LYRIC MAT. TODAY AT 2:30 FLORENCE REED IN THE MIRAGE. WALNUT Matinee Today, 2:30. Directed by J. P. H. W. MANABER. OPPORTUNITY BY OWEN DAVIS WITH JAMES CRANE. METROPOLITAN OPERA HOUSE BRADY AND POPHAR STRETS SAT. APRIL 9, 1921, AT 8:15 P. M. PHILADELPHIA OPERA HOUSE TRAVIATA. PASSMORE, KENNEDY, PULLEY, GIFFERD, CONYVALE, TONIGHT AT 8:30. Tickets \$2.00 to \$2.50. BOX OFFICE AT WELSMANN'S, 47th & CHESTNUT ST. FORREST—Pop. Mat. Today ZIEGFELD FOLLIES SEATS SELLING FOR NEXT WEEK.

LYRIC MATS. WED. & SAT. 2:15. WHAT THE PHILA. PAPERS SAID. "THE MIRAGE IS ONE OF THE BEST MYSTERY PLAYS SEEN HERE THIS SEASON" - BULLETIN. "FLORENCE REED A REGIONAL TRUMPH IN THE TITLE OF HER BEST PLAY" - ELLYNSBURGH COURAGE - EVENING LEDGER. "THE MIRAGE IS BOUND TO MAKE PHILADELPHIA FRIENDS, THE RECEPTION ACCORDED IT AND WILL BE PROVED THAT RECORD." "THERE CAN BE NO QUESTION ABOUT THE QUALITY OF FLORENCE REED AND HER PLAY" - THE PHILADELPHIA ACRES. "ONE OF THE MOST INTERESTING OF HER CHARACTERS IS REED'S SELENA" - NORTH AMERICAN. "THIS REED HAS TAKEN TO THE POINT WHERE SHE IS VIRTUALLY UNSTOPPABLE" - "MIRAGE" IS VERY REAL 1921 - PUBLIC LEDGER. "A SELENA MIRAGE" INQUIRER. "WE'RE UNANIMOUS IN PRAISING FLORENCE REED" - IN EDGAR SELWYN'S PLAY "THE MIRAGE" ADELPHI LAST WEEK POP. MAT. THURSDAY \$1.50 REG. MAT. SAT. \$2.00

ADAM AND EVA. WITH WILLIAM BOYD AND MOLLY MCINTYRE. TWO WEEKS ONLY BEGINNING APRIL 18 SEAT SALE THURSDAY - MAIL ORDERS NOW DIRECT FROM PHILADELPHIA RUN IN NEW YORK. Les Shubert presents WILLIAM FAVERSHAM IN MARK TWAIN'S "The Prince and the Pauper" A TALE FOR YOUNG PEOPLE OF ALL AGES

"NOTABLE SUCCESS" LEADER. THE MILEDRAMA OF MARRIAGE, MORALS AND MONEY BY OWEN DAVIS. JAMES CRANE. THRILLING THOUSANDS. WALNUT ST. THEATRE WALNUT AT 11th & CHESTNUT ST. Phone Walnut 5169. Sole Manager J. P. H. W. MANABER. MAT. 1:15, 7:30 TO 8:00 - PHILA. MAT. WEDNESDAY, 5:15 TO 8:15. NIGHTS. EXCEPT SAT.: 7:30 TO 8:00. SAT. NIGHT. 7:30 TO 8:30.

B.K. Keith's. CHESTNUT STREET BELOW TWELFTH STREET. Next Week—A SUPERB BILL OF EXCLUSIVE FEATURES! The Popular Player-Producer! A New Dance Production! VALERIE BERGERE and Her Company Assisted by Roy Sheldon and the Rialto Five in "TERPSICHORE MEETS SYNCOPATION". PEARL REGAY. FINK'S MULES. PARISH & PERU. The Syncopated Funster A Master of Elocution BEN BERNIE EDDIE FOYER. MINTOSH & MUSICAL MAIDS. MIRANO BROS. Extra Added Attraction! AND Extra Added Attraction! Dance CLAUDIUS & SCARLET Lillian

CASINO WALNUT AT EIGHTH—MATINEE DAILY. 10,000 Ladies Attend Weekly It's a Regular Habit. Week Beginning Monday Matinee SAM HOWE'S JOLLITIES OF 1920 A Shower of Beauty, Music and Fun WITH CLIFF BRAGDON, SAMMY HOWARD, HELEN TARR JOLLITIES JAZZ BAND. Zimmerman Theatre W. M. Taylor, Manager. ORPHEUM. GRANT AVENUE LAST TIME. CLARENCE WITH FRANK FIEDLER. FRANK FIEDLER Presents MAE DESMOND As TOPSY. UNCLE TOM'S CABIN. SEE the Original Version. Lyrics of the Original Version. Lyrics of the Original Version. Lyrics of the Original Version.

CASINO WALNUT AT EIGHTH—MATINEE DAILY. 10,000 Ladies Attend Weekly It's a Regular Habit. Week Beginning Monday Matinee SAM HOWE'S JOLLITIES OF 1920 A Shower of Beauty, Music and Fun WITH CLIFF BRAGDON, SAMMY HOWARD, HELEN TARR JOLLITIES JAZZ BAND.

Free Stereopticon Lecture and NOVEL COLOR WAVE EXPERIMENTS WITHERSPOON HALL. Saturday, April 9, 1921, at 8:15 P. M. A popular, interesting experience of the latest revelation in the Reading Art. SPECTRO-CHROME THERAPY. Treatment of Diseases by Attuned Color Waves. Colonel Dinshah P. Ghadiali, M. D. The noted Parsi Zoroastrian Scientist, Inventor, Metaphysician, and Psychologist, former of India Ex-Commander, New York Police Reserve Air Force.