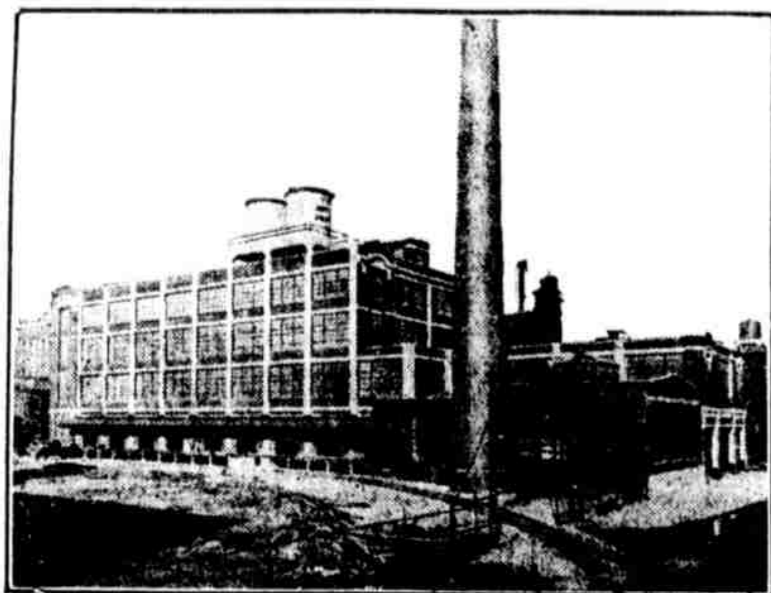


Established  
1868

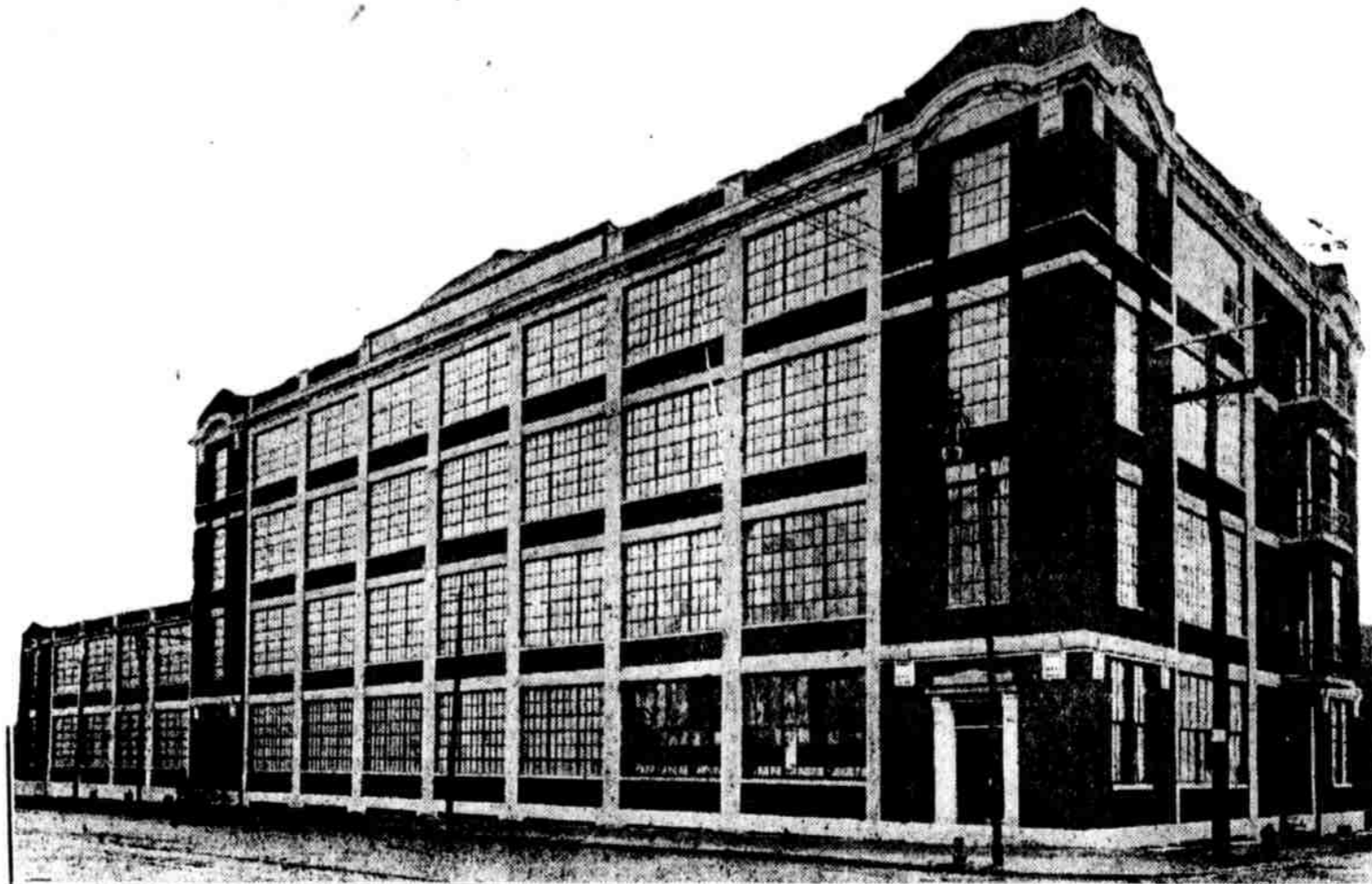
Incorporated  
1897

# The New Home of the American Preserve Company

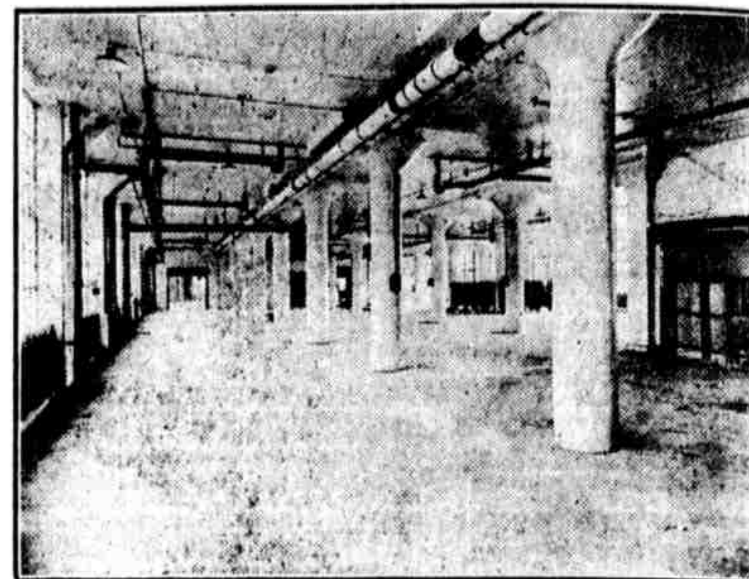
3rd and Lehigh Ave.  
Philadelphia



Rear View, Showing Stack, Boiler House, Power House Tanks, Railroad Siding and Shipping Entrances



Manufacturers of  
the Famous "Schimmel"  
Brand of Preserves



Interior View, Showing Model Construction, Abundance of Daylight and Ventilation and Ease of Cleaning

This new factory has been erected for the American Preserve Company on the south side of Lehigh avenue, extending 251 feet on Lehigh avenue, 102 feet on American street and 81 feet on Third street. It is of four stories and basement and contains 87,000 square feet of floor space. It is constructed throughout of reinforced concrete, flat-slab construction, with exterior walls of brick and steel sash, being thoroughly fire-proof, with two fire and smoke proof stairways.

The building is of modern design, incorporating the best principles of industrial architecture, finished with exposed concrete columns and beams, and walls of dark red tapestry brick with Indiana limestone trimmings, presenting an imposing mass which is attractive both in line and color.

The building is equipped with modern plumbing, porcelain fixtures,

including shower baths and drinking fountains, a vacuum heating system, electric lighting and power, a blower and exhaust system to carry off the steam around the cooking equipment and to supply pure air, and two electric freight elevators. A one-story powerhouse is located at the rear, consisting of boiler room and engine room, finished with white tile wainscots, red tile and brick floors and enameled walls and ceilings. The powerhouse is equipped with high-pressure boilers, furnishing steam for all cooking and heating purposes, feed water heater, boiler, feed pump, house water pump, vacuum pump, engines, generators furnishing electric current for all power and lighting purposes, and a refrigeration machine for maintaining a temperature of 10° in the cold storage rooms and providing ice water for cooling and drinking purposes.

A railroad siding extends along the south side of the building with

a covered loading platform which permits six freight cars to be loaded at one time.

The progress in production is a continuous operation, eliminating all lost motion and reducing labor to the minimum. The raw materials are brought to the factory on the railroad siding, from which they go to the cold storage rooms in the basement or to the fourth floor, where the manufacturing process starts, continuing by gravity to the third floor, thence to the second floor, and finally to the shipping rooms on the first floor.

It is, indeed, a true American factory building—"simple, sturdy, well-proportioned and clean-cut"—economical in maintenance and production, with ideal working and manufacturing conditions.

The products are manufactured under the most sanitary conditions, in pure air and daylight and perfect cleanliness, which insure high-grade products of the purest quality.

## The following firms co-operated in constructing this model sanitary manufacturing plant just completed

<p><b>SCALES</b> The Howe Scale Co. 806-808 Arch St. PHILADELPHIA</p> <p><b>WIRE FENCE</b> <b>CYCLONE FENCE CO.</b> Manufacturers of Fence, Wire or Iron, for any Purpose PHILADELPHIA OFFICES 405 STOCK EXCHANGE BUILDING Phone Locust 3434</p> <p><b>SAND AND STONE</b> The DeFrain Sand Co. Building Materials FINANCE BUILDING, Philadelphia</p> <p><b>METAL LOCKERS</b> DEXTER METAL LOCKERS Front and Arch Sts. CAMDEN, N. J.</p> <p><b>WOOD TANKS</b> G. Woolford Wood Tank Mfg. Co. 710 Lincoln Bldg. PHILADELPHIA</p> <p><b>OFFICE FLOORS</b> Macanite Composition Flooring Approved by Architects, United States Government, DuPont's Macanite Co. of America Builders' Exchange, Philadelphia</p> <p><b>PLASTERING</b> Diamond 209 or 2136 Park 1174 <b>F. M. VENZIE &amp; CO.</b> Plasterers 2610 W. Huntingdon St. Have You Our Estimate?</p> <p><b>MILLWORK</b> Grater-Bodey Co. Manufacturers of Millwork Norristown, Pa.</p> <p><b>CONCRETE FORMS</b> <b>BLAW-KNOX COMPANY</b> PITTSBURGH, PA. Manufacturers of Steel Forms for Concrete Construction, Clamshell Buckets, Sectional Steel Buildings, Structural Steel, Pressed, Riveted and Welded Plate Work New York—165 Broadway Pittsburgh—Farmers' Bank Bldg.</p>	<p><b>CLARENCE E. WUNDER</b> ARCHITECT AND ENGINEER 1415 LOCUST STREET PHILADELPHIA Spruce 4500 Race 5100</p>	<p><b>CRAMP &amp; COMPANY</b> BUILDING CONSTRUCTION Denckla Building Eleventh and Market Streets Philadelphia Filbert 2205 Race 166</p>	<p><b>ROOFING AND INSULATION</b> American Insulation Co. Roofing, Pipe Covering and Water Proofing Roberts Ave. and Philadelphia</p> <p><b>STOKERS</b> Files Engineering Co. Providence</p> <p><b>CONTINENTAL SUPPLY &amp; EQUIPMENT CO.</b> 726 Stock Exchange Bldg.</p> <p><b>FACE BRICKS</b> O. W. KETCHAM MANUFACTURER OF Architectural Terra Cotta, Face Bricks, Hollow Tile, Etc. 24 So. 7th St., Philadelphia</p> <p><b>STEEL TANKS</b> Philadelphia Boiler Works 1737 Filbert St., Philadelphia</p> <p><b>WATERPROOFING</b> Anti-Hydro Waterproofing Co. DENCKLA BLDG.</p> <p><b>SHEET METAL WORK</b> <b>Wayne</b> 45 years of experi- ence are back of the products and service we offer you. <b>Thomas S. Gassner Co.</b> 4545 Wayne Ave., Philadelphia Phone—Wjoming 3168</p> <p><b>IRON WORK</b> Gehret Brothers, Inc. Structural Steel and Ornamental Iron Work BRIDGEPORT, PA.</p> <p><b>LUMBER</b> Janney Lumber Co. Building Lumber Philadelphia, Pa.</p> <p><b>METAL SASH</b> <b>Lupton</b> Pivoted Factory Sash By David Lupton's Sons Co. Philadelphia</p>
<p><b>CEMENT</b> Hercules Cement Corporation FINANCE BUILDING Philadelphia</p> <p><b>TILE WORK</b> WESLEY SLOAN 2007-09 MARKET ST. ORNAMENTAL and SANITARY TILING</p> <p><b>EXCAVATING</b> McNichol Paving and Construction Co. PHILADELPHIA, PA.</p>	<p><b>REFRIGERATING MACHINERY</b> <b>WINKLER ICE MACHINE COMPANY</b> Office: 1752 N. 29th St. Shop: N. E. Cor. 29th &amp; Sedgley Ave.</p> <p><b>VENTILATING SYSTEM</b> <b>J. E. SNYDER</b> 1847 N. Sixth Street</p> <p><b>ELEVATORS</b> <b>OTIS ELEVATOR COMPANY</b> OTIS BUILDING</p> <p><b>PLUMBING FIXTURES</b> Chestnut and 30th Sts. <b>BRIDGMAN CO.</b> Philadelphia, Pa.</p>	<p><b>RADIAL BRICK CHIMNEY</b> American Chimney Corporation Stephen Girard Building, Phila. NEW YORK BOSTON CLEVELAND</p> <p><b>ELECTRIC WIRING AND GENERATORS</b> United Electric Construction Company 1727 SANSOM STREET PHILADELPHIA, PENNA.</p> <p><b>GLASS-LINED TANKS</b> The Glass Coating Company NEW YORK, CLEVELAND, CHICAGO</p> <p><b>CEMENT INSPECTION</b> E. L. Conwell &amp; Co., Inc. Engineers, Chemists Inspectors Established 1894 Tests of Cement, Concrete, Steel, etc. Analyses of Steel, Alloys, Oil, Coal, Paint, Water, etc. 2024 Arch St., Philadelphia, Pa.</p> <p><b>CORK INSULATION</b> JOHN R. LIVEZEY Glenwood Ave. west of 22d St. Installed Cold Storage Insulation and Cold Pipe Covering</p> <p><b>MARBLE AND SLATE</b> Marble Tile Structural Slate Alberne Stone <b>E. P. HENRY CO.</b> Incorporated Contractors 1506 Sansom St., Philadelphia</p> <p><b>BOILERS</b> Works: Coatesville, Pa. <b>Coatesville Boiler Works</b></p> <p><b>Sales Offices:</b> Philadelphia New York</p>	<p><b>WATERPROOFING</b> Anti-Hydro Waterproofing Co. DENCKLA BLDG.</p> <p><b>SHEET METAL WORK</b> <b>Wayne</b> 45 years of experi- ence are back of the products and service we offer you. <b>Thomas S. Gassner Co.</b> 4545 Wayne Ave., Philadelphia Phone—Wjoming 3168</p> <p><b>IRON WORK</b> Gehret Brothers, Inc. Structural Steel and Ornamental Iron Work BRIDGEPORT, PA.</p> <p><b>LUMBER</b> Janney Lumber Co. Building Lumber Philadelphia, Pa.</p> <p><b>METAL SASH</b> <b>Lupton</b> Pivoted Factory Sash By David Lupton's Sons Co. Philadelphia</p>