

LEGION FINDS JOBS FOR VETERAN ARMY

Thirty Per Cent of Applicants Get Work Through Bureau at Headquarters

The unemployment situation is being met by the American Legion employment bureau at headquarters of the county committee, 36 South Tenth street.

At its March meeting Tuesday at the Bellevue-Stratford Fourth Naval District Post, No. 107, went on record as endorsing the stand taken by W. F. Fisher in refusing the Metropolitan Yacht Club for the meeting.

At the last meeting of the Robert J. Martin Post, No. 98, plans were formulated for the raising of funds for the purchase of a new home for the post.

STOREKEEPER'S ATTENTION!

Table listing various goods and their prices, including flour, sugar, and other household items.

Table listing various goods and their prices, including clothing, shoes, and accessories.

Recommend a Friend Lakoff Bros. 322 Market Street

Organ plays at 9, 11 and 4:50 Wanamaker's DOWN STAIRS STORE WANAMAKER'S WEATHER Fair

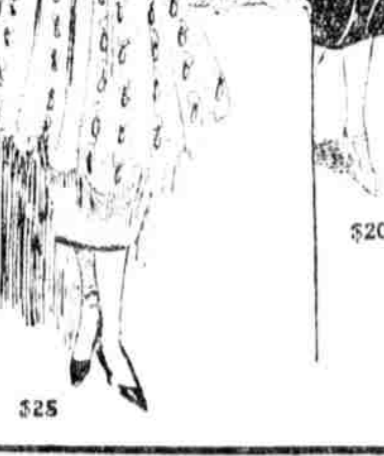
Wanamaker Down Stairs Store's Great Easter Fashion Sale

8000 Fine Spring Coats, Suits and Dresses for Women and Young Women—

Many of the Dresses Marked at Less Than Cost of Making

EASTER comes early this year, it's just three weeks away. Which gives particular emphasis to a sale of this character—a sale which offers all that is fashionable and fine in women's and children's Spring apparel.

Every one of these 8000 garments is fresh and new. Every one is correct in fashion and bewitchingly lovely. Every one is marked a fourth less, a third less, and many even half price and less.



200 dresses of navy blue serge in three styles and of black and navy satin or crepe de chine in three styles at

100 dresses of navy blue tricotine or serge, wool embroidered, and made in a variety of pretty styles, at

200 dresses, in 10 different models, of serge and wool jersey in navy and brown, embroidered in wool or braid, at

300 dresses of mignonette, of eyelet embroidered taffeta or of taffeta in many other interesting styles—navy, black and brown, at

250 dresses of navy blue tricotine and taffeta. Some of the taffetas have pleated Georgette overskirts; tricotines are embroidered in wool

650 dresses of taffeta, some with scalloped skirts, of serge and wool jersey with embroidery or of mignonette in a variety of styles

- \$5.00 \$6.25 \$8.65 \$10.00 \$11.25 \$15.00

Wonderful Dresses—Many Half Price at \$16.50 to \$20

\$16.50 for fine jersey, charmeuse and taffeta dresses, heavily embroidered; for eyelet embroidered charmeuse in navy, taupe and brown. Many of these are samples. \$18 for scalloped taffetas, trimmed with soutache. \$18.75 for embroidered Poirer twill dresses, handsome dresses of navy Georgette heavily embroidered with bronze beads; for eyelet embroidered taffeta dresses. \$20 for many different taffeta dresses, some elaborately trimmed with steel beads.

Beautiful Sample Dresses, \$25

Tailleur frocks, afternoon dresses and exquisite dinner gowns—mostly one, two or three of a kind, a point which fastidious women like. Materials are of delightful qualities in ecru, navy, brown, black, henna, silver, white, turquoise and orchid. Here are dresses of —lace or filet mesh over taffeta; —taffeta with many tiny ruffles; —Canton crepe and heavy crepe de chine; —crepe-back satin often combined with Georgette; —Georgette in plain colors or figured patterns; —tricotine, beautifully embroidered; —crepe meteor or eyelet-embroidered taffeta.

Copies of Distinguished French Dresses \$35 \$39 \$45

Callot, Paquin, Lanvin, Madeleine et Madeleine, Drecoll and Agnes made the originals from which many of these dresses were copied or adapted. Just one or two dresses of a kind and each dress expressing the highest art in material, in fashion and in finish. There are light colored dresses of heavy silks for sports wear; —some very handsome all-black dresses; —dresses of Sheeba crepe and of heavy Canton crepe; —lace or embroidered Georgette over taffeta. —fine twill cord over satin; —coat dresses of allover embroidered taffeta.

Sizes 16, 18, 36, 38 and 40, with particularly pleasant choosing in sizes 38 and 40.



Fine Easter Coat News!

Three Specially Priced Groups of Women's and Young Women's Fashionable New Coats and Wraps At \$10.75 to \$16.50

\$10.75 coats are of tan polo cloth lined throughout with figured silk.

\$15 and \$16.50 groups comprise capes of burella or velour in navy and tan. Sports coats of jersey. Coats and wraps of velour, half lined with silk.

A \$15 suede velour dolman is sketched. It is in brown, reindeer, Pekin and tan, half lined with silk.

At \$19 to \$25 (Many Fine Samples)

Over 300 coats and wraps in this gathering, including at \$25 a wonderful collection of sample coats and wraps of very fine tricotines, polo cloth, Bolivia and covert cloth.

A \$19 coat is sketched. It is a loose-back model in velour, with a pointed collar ending in a tassel.

At \$23.50, some exceptional velour dolmans in tan, Pekin and taupe, lined throughout with plain or figured silk.

A good \$25 model is a cape with a gay block-plaid facing.

At \$29 to \$39

Really lovely wraps and coats of the most fashionable fabrics.

Wraps of woodyne with wool embroidery, \$39.

Capes and coats of Bolivia and Ramona, \$35 and \$39.

Dolmans of navy serge, elaborately trimmed with black braid and touched with gold thread, \$29.

Natural camel's-hair coats lined throughout with navy blue silk, \$35.

(Market)

Women's Jersey Suits \$10, \$12.50 and \$13.50

In heather mixtures of Copenhagen, green, brown, tan and Oxford gray, these suits are made in a simple sports style with plenty of pockets. The jersey is all-wool and of firm, shape-retaining texture.

Splendid Suits at \$22.50 and \$25 (Some Are About Half Price)

Some fine sample suits of English tweeds, mannish suiting and hairline stripes and of navy blue serge. The hair-line stripe suits have little flannel vests, three-tier pockets and are lined with beautiful silk.

Simple tailored suits of tweeds in soft grays and tans are \$25.

(Market)

Girls' Tub Dresses, \$1.50

Plaid gingham in red, blue, brown and pink or cadet blue, green or pink gingham with white vestes or contrasting collars. Ever so pretty and fresh and in all sizes from 6 to 14.

White Voile Dresses, \$2.65

Soft white dresses, prettily tucked and trimmed with laces and ribbon sashes. Sizes 6 to 14.

Pleated Skirts, \$3.75 and \$7.75

\$3.75 skirts are of checked material in sizes for Juniors. \$7.75 skirts are of plaid serges made with belts or on white bodies. Sizes 10 to 16.

Girls' Spring Coats, \$10

Pretty new coats of velour in reindeer, Copenhagen and Pekin, lined throughout and box pleated under a belt. Sizes 6 to 10 years.

(Market)