

MINIATURE CARS ARE ON DISPLAY

Quarter-Size Models at Auto Show Exact Reproductions of Regular Machines

The exhibit at the Marmon booth at the Automobile Show contains a feature that has aroused the greatest interest. Miniature cars are on display, each of them reproducing in the minutest detail a standard model. Built to a one-quarter scale, these cars are so faithful in their "large" make with its faithful and a completeness in the finest and most delicate details that they are realized only by an actual inspection of the work.

The one drawback of the storage booth in the show of recent years has been the fact that only a few of the different models can be shown. It was to offset this that the idea of presenting a series of miniature cars was conceived and worked out.

To make such a display possible has meant the elimination of difficulties that would have been insurmountable. The most ingenious of solutions have been employed to secure the result desired. Some of these are: the use of interesting than the beams used in the making of the radiator. Soda straw were used, but to a length of three-quarters of an inch. To get the hexagonal honey-comb effect, the straws were shaped on a hexagonal-shaped piece of steel. These pieces of straw were then glued into rows the width of the radiator, and then glued one row on another to get the desired height. The whole was then dipped in shellac and painted.

The bodies of the miniature cars are formed of aluminum. To get the most satisfactory results a thinner leather than that used on standard jobs had to be used. First the leather is used on all miniature open cars; for the interiors of closed cars silk has been used.

Lighting is made possible by a small dry cell attached beneath the car. The headlights are made integral and are lighted by a small globe inserted in the large light and connected with the dry cell. The closed cars are lighted also by dome lights connected with the same cell.

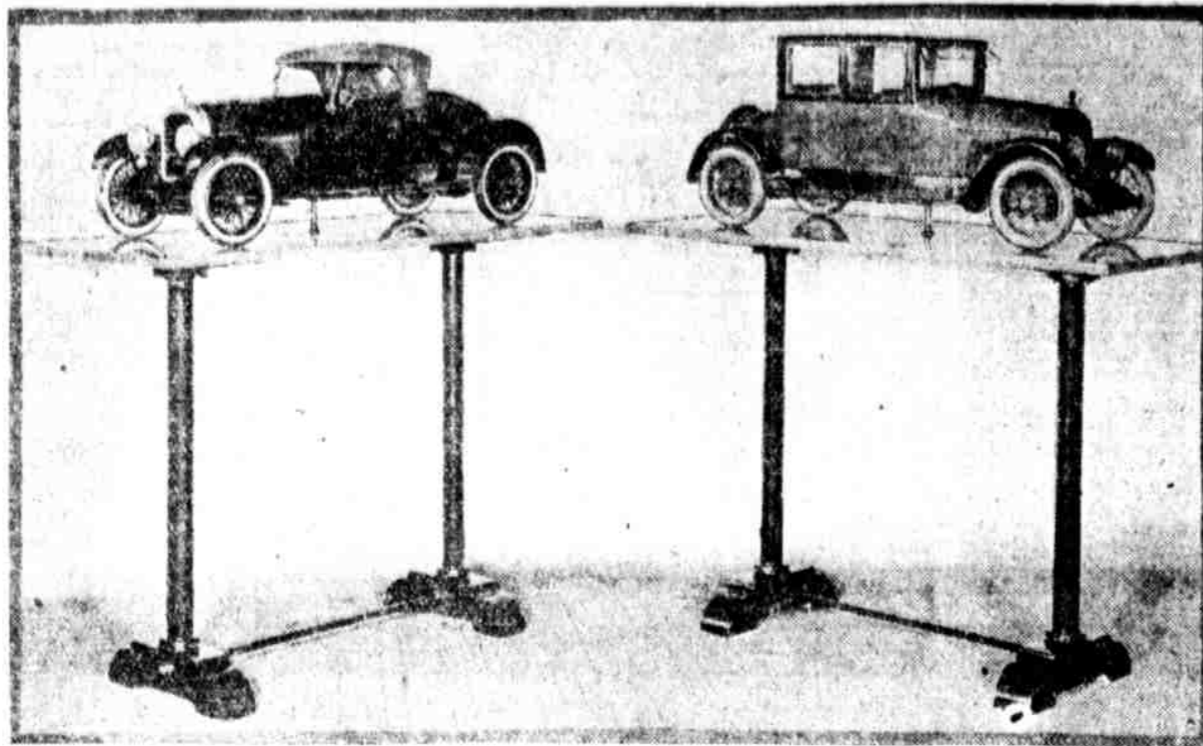
In every possible way the standard model is followed. The front axle and steering mechanism is exactly like the larger type. The wheels revolve on knuckle articulation and both wheels are attached to permit steering. The windshields swing on trunnions and turn, raise and lower in the same manner as the standard type.

The frame, made of sheet aluminum, is an exact reproduction. Its members are shaped over a standard form and riveted. The same is true of the fenders. The rear axle system is one solid aluminum casting. The rear wheels revolve on a straight shaft, which is a part of the rear axle mechanism. The wire wheels were made in the Marmon factory in their outfit.

The satisfactory solution of these many problems has meant that the eight miniature cars on display are as beautiful in every detail as it is possible to make them. Nothing has been spared in making these models in every way. One may see them and have a comprehensive idea of the style of the standard model, its lines, its many points of comfort and convenience.

In Twenty-fifth Year For the first time in the history of the Motor Carriage Co. the miniature cars are on display at the Auto Show.

UNIQUE DISPLAY OF MARMON MODELS



One of the most interesting displays at the Auto Show is the exhibition of Marmon cars in miniature. They are perfect models made to scale, one-fourth regulation size.

AUTOMOBILE BROADENS ONE'S SPHERE OF ACTIVITY

Manufacturer Tells How Motorcar Is an Adjunct to Our Personal and Business Success

By G. A. KISSEL

The owner of an automobile, through the dependability he can place on it and its readiness at all times, not only makes the most of his time, but his car saves him time and in this day, as we all know, time is money.

With the automobile the business man now arrives at meeting on time; the executive is about at all times; the doctor reaches his patients in time; the salesman can reach his customers at any time.

Through the mechanical efficiency of the passenger car it broadens our sphere of activity, practically enabling us to cover the two blocks of today to the one of yesterday. This economy of time is a necessity in every phase of business life, whether at the office, factory or home.

The successful man makes his minutes pay, that is why he looks for the greatest results. His automobile enables him to travel greater distances in less time than the man without an automobile could in half an hour. It concentrates his time, instead of scattering it. Its advantage is to shorten his time, to make his time his own.

He is reducing his minutes, while the nonowner is adding to his hours; making his automobile an investment, while other less certain methods of transportation prove an expenditure.

It is in the time saved, not the time spent, that counts today. With only sixty seconds in a minute, it is up to everybody to make each second count. It is no exhibition that if every non-owner of an automobile could only try to figure up the many uses he can put a car to, and how many hours it would save him, and then consider the many other things he can accomplish in the time saved, there would be no doubt in his mind that the purchase of an automobile would prove a paying investment.

Brinton Trucks
2-2 1/2 Ton 2 1/2-3 Ton Capacity
Manufactured in Philadelphia
Consider your best interest.
Buy from the manufacturer direct.
Brinton Motor Truck Co.
5805 Market Street
Philadelphia

Miniature MARMONS
Sensation of Show
Automobile Show
Space No. 52

TRUCK EXPRESS LINES INCREASE

Estimated That 10,000 Systems Are Now in Operation in United States

Almost overnight the motortruck has become a tremendous factor in the movement of the nation's food supply. There are known now to be more than 10,000 regularly established rural motor express lines in operation, and the number is constantly increasing.

In the city of Baltimore an interesting change has taken place. Through the co-operative efforts of the farmers in Harford county, in Maryland, the milk supply has increased 75 per cent. Terminal facilities have been installed to permit continuous operation.

At such centers as New York, Cincinnati, Minneapolis, Cleveland, Louisville, Grand Rapids and St. Louis motor freight terminals are also established.

These exercise important influences on transportation and production. In the city of Cincinnati alone 60,000 cars were released for through traffic; shipments that took four days by cars from one part of Cincinnati to another were transferred in four hours by truck.

2500 Trucks at Mines
Further evidence of the country's increasing dependability on the motortruck, as a means to increased production and economical distribution, is had in the present coal situation. Of the 4000 coal mines in the country 2000 are without railroad connection. Of the 5000 precious and semi-precious ore motortrucks.

At Terre Haute, Ind., coal is being hauled directly from the mine to the consumer. The mines are seven miles east of the city and are owned by the coal dealers. Due to the fact that this operation lies within the "short-haul" sphere, the truck was able to cut the delivery time from weeks (by railroad) to days. The Civic Association of Birmingham, Ala., has contracted with a motortruck company to move coal direct from the mines to the consumer at the rate of 200 tons a day.

In the Chicago stockyards the packers established an emergency motorized freight service to get provisions to the districts cut off by the recent strike. A fleet of fifty trucks was placed in operation between the yards and Racine.

Elgin, Aurora, Gary, Waukegan, Kenosha and other towns. The conditions of competition influencing the development of motor transportation at present are different from those which stimulated the rapid increase in the use of trucks during the war. Except for perishable goods time

is only one consideration. The established transportation systems will eventually adjust their facilities to become best adapted to the traffic for which they are most suited. The motortruck must bid for business on the basis of efficiency alone.



Emblem of Satisfaction

Mason's Garage
Hatboro, Pa.



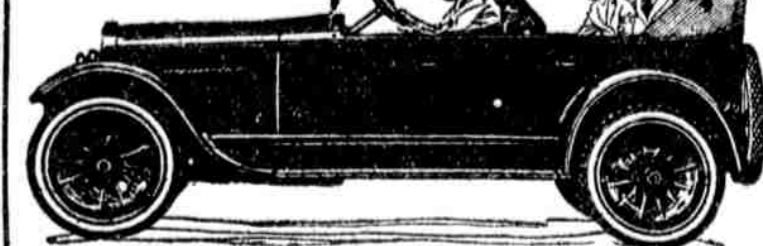
Emblem of Satisfaction




Everybody Knows Buick Builds Six-cylinder Valve-in-head Automobiles

—that BUICK sold its entire 1920 output long before the end of the season.
—that Buick Users are Buick Salesmen.
—that BUICK car values are 100%.
—that nineteen-twenty-one BUICK automobiles have more improvements than any Buick model in the past 5 years; and 1921 models represent 25% greater used-car values.

The matter of present purchasing should receive the immediate consideration of motor-car buyers.



Roth-Buick Co.
4700 Frankford Avenue
(SEVEN STARS HOTEL)



NASH

SIX AND FOUR

THE Nash Six and Nash Four, in a wide range of models, are on exhibition at the show. Each has great power, due to the Nash Perfected Valve-in-Head Motor, and combines those pleasing qualities of beauty, comfort, economy and endurance which have caused the name Nash to stand the country over for particularly sound and attractive motor car value. One of these fine Nash cars is certain to meet squarely your individual preference.

Nash Passenger Car Prices—Six and Four

Nash Six—3-passenger touring car, \$1695; 2-passenger roadster, \$1695; 4-passenger sport model, \$1850; 7-passenger touring car, \$1875; 4-passenger coupe, \$2650; 7-passenger sedan, \$2895
Prices f. o. b. Kenosha

Nash Four—5-passenger touring car, \$1395; 2-passenger roadster, \$1395; 3-passenger coupe, \$1895; 5-passenger sedan, \$2155. *Prices f. o. b. Milwaukee*

All Nash Passenger Cars have Cord Tires as standard equipment

Philadelphia-Nash Motor Company
901 North Broad Street
Camden Branch, 901 Broadway

NASH MOTORS



AT THE SHOW

YOU ARE SPECIALLY INVITED TO EXAMINE THE GARDNER LIGHT FOUR—IT WILL BE ON EXHIBITION THE ENTIRE WEEK AT THE AUTOMOBILE SHOW.

THE GARDNER LIGHT FOUR WAS DESIGNED TO MEET THE DEMAND OF 87 PER CENT OF ALL CAR OWNERS—AND IT DOES—IT HAS PROVED 100 PER CENT VALUE IN THE HANDS OF THOUSANDS OF SATISFIED DRIVERS—THEY PRAISE ITS UNUSUAL ECONOMY AND EASE OF OPERATION.

IT HAS OUTSIDE BEAUTY AND INSIDE DURABILITY, POWER, REFINEMENT AND COMFORT—OVER 33 YEARS OF SUCCESS IN BUILDING GOOD VEHICLES ASSURES IN THE GARDNER CAR A REPUTABLE PRODUCT FREE FROM THE COST OF EXPERIMENT.

IT IS THE LOWEST PRICED AND THE EASIEST CAR TO OPERATE OF ITS CLASS IN THE WORLD—THE ONE CAR FOR EVERYBODY THAT IS CREATING A COUNTRY-WIDE SENSATION. DON'T FAIL TO SEE IT.

THE GARDNER MOTOR CO. INC.
ST. LOUIS, U. S. A.



The Vertner Motor Corporation
DISTRIBUTOR AND DEALER

SALESROOMS
933 NORTH BROAD STREET

Gen'l Office and Service Station
1310 N. FIFTH STREET
Phone, Kensington 5855

\$1195

F. O. B. ST. LOUIS