

FOOT AND LIMB TROUBLES
Instantly relieved by our special arch supports, fitted and adjusted by expert O. H. F. Soames in a most comfortable manner. Support for various ailments, weak knees and ankles, Trusses, abdominal and chest support. Largest manufacturer of deformity appliances in the world. Philadelphia Orthopedic Co., 49 N. 13th St. Cut out and keep for reference.—P. L.

PARCEL POST



Men's Shirts \$1
Send No Money ALMOST ANY KIND YOU WANT
Make your selection from the following shirts:
White Oxford, with or without button-down collar attached; also neck-band.
Neat stripes, button-down collar attached.
Woven Madras, neckband, soft double cuffs.
Printed Madras, neckband, soft double cuffs.
Plain Color Cotton Crepe, neckband, soft double cuffs; Pink, Blue, Tan and Lavender.
Fine Count Percale, neckband, soft double cuffs.
First quality shirts of the nationally famous Manchester brand, direct from factory—an amazing bargain! Send no money. Pay postman only \$1.00 for each shirt, plus postage, after arrival. Then try them on. If they do not please, return at our expense. Your money returned at once.
Tell us your size, the style desired and the number of each to send you.
The Century Shop
1221 Girard Avenue
Philadelphia, Pa.

Take Notice! Jan. Sale
Your Dollar Is Worth Three at Waltman's
All-Wool Sweaters, \$8 Value \$2.98

Ladies' 50c Lisle Stockings, 29c; 4 Pair Ladies' 59c Gingham Aprons, 29c; 4 for Turkish Towels, 50c val., 29c; 4 for Infants' Flannel Sacks, 29c; 4 for Extra Heavy Turkish Bath Towels, \$1.00 val., 39c; 3 for Extra Strong Quality Pillow Cases, regular 65c val., 39c each; 3 for Ladies' 75c Camisoles, 39c; 3 for Ladies' \$1.00 Envelope Chemises, 39c; 3 for Ladies' Heavy Flannel-ette Nightgowns; \$2.50 val., for Men's and Ladies' Woolen Underwear for Men's Army Sweaters for Men's Overalls and Jackets for

PARCEL POST 10c EXTRA
J. WALTMAN
457-61 N. 8th St.
Philadelphia, Pa.
Open Evenings 7:15 to 10:15
Mail Orders Promptly Filled
PARCEL POST 10c EXTRA

622 Market St.
35,000
Raincoats
\$1.75

Each Reclaimed by U. S. Government
These coats were made from the Government's surplus material, but in very good condition. They are guaranteed to be very strong and well made. They are adapted for use in the home or for out-of-door use. They are a combination of the best of both worlds. They are made of a material that is both strong and light. They are made of a material that is both strong and light. They are made of a material that is both strong and light.

Military Sales Co.
622 Market St.
Philadelphia Open Evenings

Come Tomorrow
Store Hours 9 to 5:30
GIMBEL BROTHERS
MARKET · CHESTNUT · EIGHTH · NINTH
Looks Like Last Chance to Buy
New, Best Models of
Columbia Talking Machines
At Big Money Saving

\$120 E-2 Grafonolas \$80
\$140 F-2 Grafonolas \$95
\$150 G-2 Grafonolas \$110
\$165 H-2 Grafonolas \$120
Columbia Grafonolas, H-2 Reduced

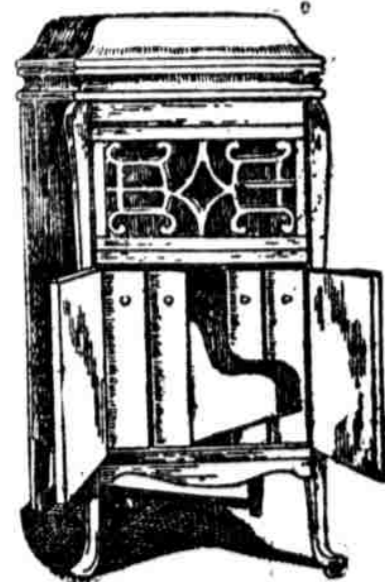
Columbia tone is clear and resonant.
Columbia appearance is artistic, dignified and gratifying in any home surroundings.
Columbia plays all flat (disc) records.

Aeolian Vocalions Reduced

Two Discontinued Styles

\$110 Been \$135
\$135 Been \$165
First Payment May Be as Little as— **\$5**
\$135 Aeolian at \$110
\$165 Aeolian at \$135

Gimbel Conreid Phonographs Save Third at— \$59



Columbia Records Reduced
Several thousand perfect Columbia Records at—
69c for \$1 Records
89c for \$1.25 Records

The reduction is because of a change in the grill-work.
Will play any disc (flat) record.
Height, 42½ inches. Polished mahogany cases. Celebrated Heineman motor. Special Record Filing interior.

First Payment May Be as Little as— **\$5**

MESSRS. GIMBEL BROTHERS Philadelphia
Without obligating me please give me full information regarding offer on Talking Machines.
Name
Address

Come Tomorrow
Monday, Jan. 10, 1921
January Bargains in the Subway Store
Women's and Misses' **\$25 to \$39.75 Dresses Reduced \$10 to**

Including many "samples." Beaded satins. Tricotines with ribosine embroidery—and the sweetest little lace-ruffled vestees. Georgettes—beaded in color. Velours—with color-bound slashings. Taffetas—with overdresses. Charmouses—in redingote effect. And wool-jerseys—smartly embroidered.
Mostly browns, blues and black.
Plenty of extra sizes included.
And 220 Brand-new \$20 Tricolette Dresses Also at \$10
Two smart styles—one, embroidered. Both in browns—blues—blacks. And wonders!
—Gimbels, Subway Store

\$21.50 to \$49.75 Fur Neck-Pieces Now \$10, \$15 and \$25
Fox and wolf. Taupe, brown and black.
Good and big!
\$14.75 & \$39.75 Chokers—now \$7.50 and \$25.
Squirrel, Marmot, Stone-Marten, Australian Opossum and Mink.
Children's Furs now 50c to \$11.25—were \$1 to \$22.50
—Gimbels, Subway Store

\$2 Combinations At 85c
Fine nainsook with lace and ribbon.
Corset-cover and skirt—or corset-cover and drawers.

\$1.25 Nightgowns At 75c
Very fine nainsook.
Neat tailored style. Slip-over, hemstitched in pink or blue.
—Gimbels, Subway Store.

\$2.25 Extra-Size Envelope Chemises At \$1.25
Two styles. Nainsook. Two styles. Strap and fitted shoulders.
—Gimbels, Subway Store.

G. B. Corsets \$1.50
Of durable white coutil. Medium low bust and long skirt; for average figures. Has graduated front clasp.
Regularly \$2.25, at \$1.50.
—Gimbels, Subway Store.

1200 Lingerie Waists, 85c
Regularly \$1.65
Lace and embroidery trimmed. Semi-tailored voiles and lineen.
All sizes. Ten models to choose from. Special at 85c.
—Gimbels, Subway Store

6600 Men's Shirts, \$1.10 Worth Up to \$2.50
A big purchase from one of Philadelphia's shirt factories. In the lot you'll find printed and corded madras, cotton crepe and pongee. Also poplin, oxford and 80x80 count percale. Take your "pick" of colors—stripe and plain. Also some white.
Sizes 14 to 17. Worth up to \$2.50, at \$1.10.
Aisle and Regular Section.
—Gimbels, Subway Store.

Men's Suits and Overcoats at \$20 and \$25
Were Rated at \$35 to \$50
You can depend on Gimbel's clothing—as to values and service.
Suits come in double-breasted models in very neat much-wanted mixtures.
Overcoats are Ulsters, town ulsters and conservative models. Also form-fitting style for the dapper young man. Various durable coatings in grays, brown mixtures and heathers. At \$20 and \$25.
Cheviots, cassimeres and tweeds. Sizes 34 to 42. At \$20 and \$25.

Boys' Natty Norfolk Suits \$7.50 and \$10
Save a Third : Ages 7 to 16 Years

Boys' Overcoats and Mackinaws at \$7.50 and \$10
Sizes and styles for boys of 7 to 17 years, and for juniors of 3 to 10 years.

Boys' Russian Suits and Overcoats—\$2.50
Ages 2, 3 and 4 years. Half price and less.
—Gimbels, Subway Store

Men's Winter Shoes at \$4.95
Extraordinary Values
Tan brogues—both high and oxford. Men's army shoes—fine for policemen and men who work outdoors. Welted soles. Sizes 6 to 11. Special at \$4.95.

Boys' School Shoes at \$2.95
1000 pairs black gunmetal lace Shoes; well made; stout leather soles. Sizes 8 to 2. At \$2.95.

Misses' and Children's Shoes at \$2.95
High top lace shoes, gunmetal. Sizes 8 to 2. At \$2.95.
—Gimbels, Subway Store

5000 Seamless Sheets at \$1.10, \$1.48 and \$1.68
Save Half to Double
Many sizes up to and including extra sizes. Many of the best sheets made in the lot.
5000 yards of Outing Flannel—less 17c than half price, at price, at
27 inches wide; various neat stripes and colors. 500 Pairs Woolnap Blankets—half price, at Double-bed size; gray or white.
—Gimbels, Subway Store.

Mill Ends of Cotton Wash Goods at Close to Cost
Our Annual Sale is larger than any previous year owing to the low market condition. Buy before next Spring.
Mill ends Printed Gaiters, 12½c
Mill ends Fine Dress Gingham, 15c
Mill ends Fine Printed Madras, yard, 15c
Standard Apron Gingham, yard, 15c
Fine 46-in. Printed Percale, 18c
Mill ends Fine Dress Gingham, 18c
Extra fine quality Shirting Percale, yard, 22c
Mill ends 16-in. Ramie Suiting, yard, 25c
Best quality Woven Cheviot, 25c
New Plaid Dress Gingham, 25c
Mill ends woven Endurance Cloth, yard, 25c
Mill ends 27-in. Mercerized Poplin, yard, 25c
—Gimbels, Subway Store.