

**STATE LEGISLATURE TO OPEN TUESDAY**

Unanimous Election of Former Presiding Officers Predicted. Arrange for Caucuses

**SPROUL'S MESSAGE JAN. 17**

By the Associated Press  
Harrisburg, Jan. 1.—Preparations are complete for the opening of the 124th session of the Legislature of Pennsylvania at the state Capitol on Tuesday at noon, when twenty-six Senators are laid-over members, having been elected for four-year terms in 1918 and one for the new senators were elected for a two-year term to succeed James M. Campbell, who died just before the close of the session of 1919. There were senators elected from all of the odd-numbered districts in November and all of the members of the House of Representatives were chosen at that time.

Indications are election of the presiding officers of the two houses will be without opposition, there being a possibility that the Democrats, who number less than a score in the two houses, may join with their Republican colleagues and re-elect Senator Frank E. Baldwin, of Potter, as president pro tem of the upper House and Robert S. Spangler, of York, as speaker of the lower branch.

Present plans are for the caucus meetings to be held Monday night, when there will also be taken up the plan of fixing April 28 as the date for the adjournment. The last time this action was taken was in 1909 when April 15 was set. Since that time two sessions have adjourned in May and three in June.

The Governor will send to the Senate numerous recess appointments, some of which may be disposed of at once, but he will not send his message until after the recess, which will be taken on Tuesday until January 17 to enable the committee to be made up.

**Headquarters For Engineering and Technical Books**  
Philadelphia Book Company  
17 South 9th Street

**Comfort Baby's Skin With Cuticura Soap And Fragrant Talcum**  
Address: Cuticura, 1000 N. 3rd St., Philadelphia, Pa.

**We Buy Gold—Silver, Platinum, Diamonds, Jewelry of All Kinds**  
Penn Smelting & Refining Works  
THE OLD GOLD SHOP  
906 Filbert St., Phila.

**Note the Name—Paper Boxes and Mailing Tubes**  
EDWIN J. SCHOETTLE CO.  
533 N. 11th St. Philadelphia

**THOS. SAVILL'S SONS**  
100 WALLACE STREET

**PHILADELPHIA STEAM HEATING CO.**  
EST. 1870  
INSTALLATION AND REPAIR WORK

**COVERING THE ENTIRE FIELD OF MECHANICAL EQUIPMENT FOR BUILDINGS POWER STEAM ELECTRIC HEATING PLUMBING WATER SUPPLY SYSTEMS LIGHTING VENTILATING GENERAL PIPING WORK ETC.**

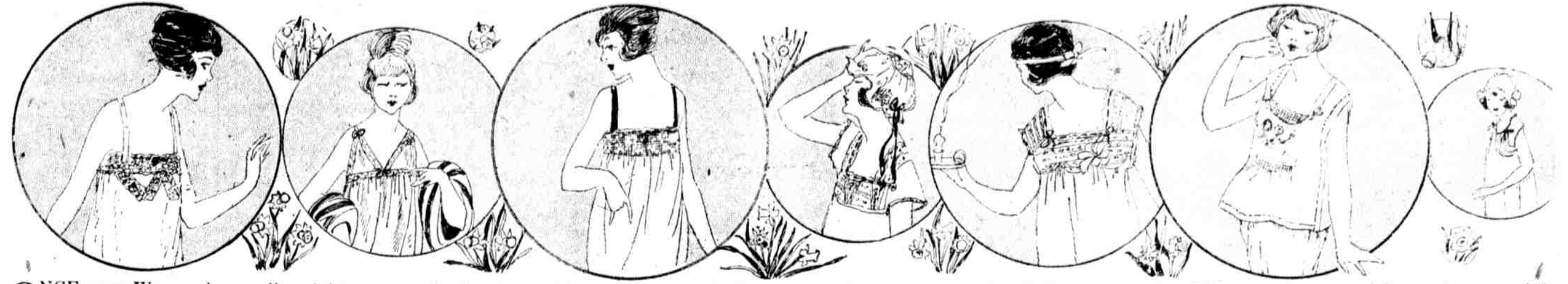
Forty-two years' genuine practical experience aimed day by day from yesterday's errors or successes, is the distinct advantage we offer you here in our shop. We are 42 business years old today.

**STOP The High Cost of Construction by Using SHEETROCK WALL BOARD**

**Proven the Ideal Board Through Its Many Users**  
It includes every good feature for ideal construction. It can't burn, won't warp or shrink; any one can erect it and save time and money. Can be papered, painted or paneled. Large stock of convenient sizes.  
**Pearce Fireproof Co.**  
1847 ARCH ST.

**STORE CLOSED ALL DAY TODAY WANAMAKER'S DOWN STAIRS STORE WANAMAKER'S WEATHER Unsettled**

**Opening a Quality-full Cost-Saving White Sale In Wanamaker's Down Stairs Store**



ONCE more Wanamaker quality nightgowns are back to 50c and \$1, petticoats are back to 65c and 75c, bloomers are back to 75c, envelope chemises are back to \$1, corset covers are back to 50c, silk nightgowns are back to \$3.85. Once more really wearable cotton shirtwaists can be had at \$1.35, and smart silk ones are as little as \$2.90 and \$3.50. Once more such small sums as \$1 to \$3.50 can purchase properly cut corsets designed by corset manufacturers of recognized reputation.

Once again soft, fine little garments for children and young girls can be secured for 25c to \$1.50. Once again good towels are as low as 18c and 25c! Most of these prices are back to a pre-war basis, in some cases they are even less than before-the-war rates—but for this White Sale only. Households which have been waiting to supply their needs will welcome enthusiastically this splendidly practical White Sale in the Down Stairs Store.

**Envelope Chemises, \$1 to \$3**  
Quantities of styles trimmed with embroidery or Valenciennes lace.

**Satin Nightgowns, \$3.85**  
Crepe de chine or satin trimmed with imitation Duchesse or filet lace and narrow ribbons. Their quality will surprise everyone.

**Silk Camisoles, \$1 to \$2**  
White tub silk, heavy wash satin or crepe de chine in the lot. Plain or elaborately lace trimmed. Many styles.

**Envelope Chemises and Nightgowns, \$2**  
Interesting collection of many styles at this moderate price. Especially dainty in material and trimming.

**Silk Chemises, \$2.25, \$3**  
Flesh-colored crepe de chine, \$2.25 and satin, \$3.

**White Petticoats, 75c**  
These are offered now at the makers' wholesale price. Made of strong white seersucker which will stand many tubbings.

**Outing Flannel 25c**  
36 inches wide, heavy, warmly fleeced outing flannel at this low price. Plain and variegated stripes.

**600 Bath Towels, 18c**  
White Turkish bath towels which boarding house owners will be glad to get.

**Women's Rep House Dresses \$1.75**  
A third less for the prettiest, most becoming house frocks of cotton rep in Copenhagen and navy. They are hand smocked and have good pearl buttons. Finished with three-quarter sleeves. Plenty good enough to wear around the house.

**Pretty Blouses \$2.50**  
Fresh, new batiste blouses in Springlike shades—flesh or corn color. Peter Pan collars trimmed with knife-pleated frills or made of eyelet embroidery. Especially nice for young girls.

**Fine Shirtwaists \$3.25**  
Made of small quantities of materials, mostly of the better kinds of white voile trimmed with embroidery and lace. Some of the lace is real hand-made file.

**Kitchen Crash 15c Yard**  
Almost half less for this excellent cotton crash with red borders. Regulation width.

**Girls' Nightgowns \$1.50**  
Little snow drifts of fine white cotton, lace trimmed and sometimes hand embroidered. Low necks and short sleeves. Sizes 4 to 16 years.

**Center Aisle Opportunities**

**1200 Women's Nightgowns, 50c**  
Last year they were double. Flesh color cotton with low neck and short sleeves. Stitched with dark blue.

**1500 Women's Nightgowns, 75c**  
Full-cut affairs with open embroidery or blue and pink stitching. Some are hand embroidered. Short sleeves and round necks.

**1000 Pair Drawers, 50c**  
Women's good muslin drawers with blind or open embroidery and clusters of tucks. Decidedly a pre-war price.

**1000 Corset Covers, 50c**  
More than a third less than our latest price for a similar grade. Good white nainsook trimmed with lace or embroidery.

**2000 Combinations, \$1, \$1.50 and \$2**  
Corset covers and petticoats, corset covers and drawers or corset covers and knickers with built-up shoulders or straps of the same material. Trimmed with lace or embroidery.

**1000 Envelope Chemises, \$1**  
Many are half the early season price. Extraordinary to get a sheer nainsook chemise with wide filet lace top at \$1. Many others equally unusual.

**Nightgowns at \$1**  
Such pretty ones that women will wish to choose three or four. Quantities of styles.

**Cotton Bloomers, 75c to \$1.50**  
Pink sateen at 85c. White batiste with embroidery or lace, 75c to \$1.50. Striped voile at \$1.50.

**Heavy Satin Petticoats \$3.85**  
Another extra special purchase of the heavier kind of satin petticoats in irresistible plain and changeable colors. Better than anything we have had at this price recently.

**Women's Gingham Dresses \$2.25**  
Unusually pretty gingham in these belted and "Billie Burke" frocks. So pretty that they would almost seem to help in the cooking of a delicious meal. Stripes or plaids in becoming colors. Sizes 36 to 44.

**Pretty French Voile Blouses \$3.75**  
These fascinating blouses are copied from French hand-made models. Here at this extraordinary price because their making kept a factory busy at a dull time. Enchantingly trimmed to look almost exactly like hand work.

**Girls' Nightgowns, \$1**  
Soft white cotton affairs with embroidered scallops or lace trimmed; some have pink bands. Sizes 4 to 16 years.

**Children's Gertrudes 75c and \$1**  
Sizes 2 to 6 years, in soft white cotton princess slips or Gertrudes. 75c ones are hemstitched. \$1 kinds have lace and ribbon beading.

**1000 Envelope Chemises, \$1.50**  
Pink ones with hand embroidery or white nainsook with laces. Many have beautiful imitation Valenciennes.

**600 Silk Bloomers, \$2.85**  
Pink crepe de chine or satin bloomers with hemstitching, picot ruffles or wide, creamy round-meshed Valenciennes lace.

**Pink Pajamas, \$2**  
Trade-marked cotton crepe pajamas in one or two piece styles. Plain or printed with bluebells and other designs. Some are hand embroidered. Some are nearly half price, others less than half price.

**Center Aisle Opportunities**

**1000 Bandeaux, 35c**  
Pink cotton ones in plain or figured materials. All sizes.

**Sample Shirtwaists, \$1.35**  
A third less for a fascinating miscellany of shirtwaists in white and colors. Polka dotted and striped dimities, colored lawns and other materials. All sorts of likeable styles.

**Sample Waists, \$1.55**  
Astounding ones. Dozens of styles nearly all fresh and new. White voile and colored cottons with all sorts of original style notes. Waistline and good-looking hip length blouses are included. All are a third less—and some are half the early season price.

**Silk Blouses, \$2.90 and \$3.50**  
Good, comfortable all-silk pongee blouses in natural color, mostly with Peter Pan collars, at \$2.90. Georgette blouses at \$3.90 include regulation lace-trimmed styles as well as smart plain overblouses.

**1900 Bath Towels, 25c**  
Better than kinds we have sold earlier at double. Heavy ones, properly woven and in regulation bathroom size. Plain white or with colored borders.

**1200 Towels, 19c**  
Sold earlier this season at almost three times this price. White cotton huck with red borders. Good for boarding house use.

**Underclothes in Extra Sizes, 85c to \$3**  
Drawers, 85c to \$1.50. Bloomers, \$1. High-neck nightgowns, \$1.75 to \$3. Low-neck nightgowns, \$1 to \$3. Envelope chemises, \$1.50 to \$2.50. Combinations, \$1.50 to \$2.50.

**New Crepe de Chine Blouses \$4.90**  
Fresh, correctly tailored blouses of flesh or white crepe de chine. Easy to tub them.

**Washable Satin Blouses, \$5.90**  
Made of especially good, heavy wash satin in white or flesh. They have Peter Pan collars and are just what young girls will like. The same model also in brown and navy satin.

**Girls' Drawers, 25c 45c, 55c**  
Sizes 2 to 12 years in these drawers, made of excellent muslin or cambric. Plain ones at 25c, others prettily trimmed with lace or embroidery.

**Children's Underwaists 25c, Less Than Half Price**  
Until a few days ago almost exact duplicates of these standard under waists sold at three times this price in our own stocks. Regulation taped buttons, 600 only. Sizes 2 to 14 years.

**Babies' Dresses, \$1.50**  
Dresses for infants and up to 2 years. Sheer, fine nainsook with dainty embroidery at neck and sleeves. Charming at the price.

**500 Wonderful Petticoats, \$1**  
White sateen petticoats with hemstitching or scalloped edges; also all-black sateen petticoats, or black ones with roses printed on the accordion-pleated flounces. Many are half price, some not quite half.

**1200 White Aprons, 25c, 38c, 50c**  
Five-h aprons in all sorts of fascinating shapes. Made of dainty sheer white lawn and organdy or of substantial lawn-finished cotton.

**1200 Gingham Aprons, 85c**  
Fascinating Dutch aprons trimmed with red-rack head. Plain blue or pink chambray and unusually attractive plaids and checks.

**1500 Sample Brassieres, 35c to \$2**  
One of our regular manufacturers had these samples on hand and sold them to us at exactly half price.

**1500 Wanamaker Special Corsets, \$1**  
Fresh, new corsets just out of the boxes. Made of better than usual materials by one of our regular corset manufacturers. Mostly of plain or figured pink coutil. Some have elastic insets. Three different models for slight, average and large women. All are half price.

**Corsets, \$1.25, \$1.50, \$2**  
By taking all the corsets one of our regular manufacturers had we are able to offer these exceptional models at very small prices. Of good materials, many with elastic insets. Models for slender, average and larger women. They are all down-to-the-minute models.

**250 Fine New Sample Coats at \$29**  
Fashionable and Beautiful Coats at Average Half Price



Everything about these coats shows their high quality. Fashions are the newest and best—sports coats, street coats and dolmans. Materials are fine and soft to the touch, mostly Bolivias, crystal cord, velour, duvet de laine, silk plush and imported coatings. Colorings reflect the shades you like—navy, reindeer, taupe, brown, wine, green and black. Linings are of plain and figured silks of unusually fine quality. Some Have Fur Collars of racoon, Australian opossum or sealene. Others are entirely without fur. Plenty of Black Coats cut on simple tailored lines are here for women who like coats of the more conservative type. Sizes for Women and Young Women but as most of these are samples there are not all sizes in every style.

**New Dresses, \$10.75, \$12, \$15 and \$16.50**

Several hundred fresh new dresses of serge, jersey, velour, tricotine and Poirer twill will start the New Year with real economies for the women who buy them. All Are Marked Lower Than Usual—Many Are Half Price

**\$10.75**  
for dresses of navy serge, with a long blouse line. Skirts and bodices are quite elaborately stitched in gray, Copenhagen or henna silk.

**\$12**  
for dresses of navy blue Poirer twill, trimmed with French knots done in tan or Copenhagen wool. Or for wool velour dresses in reindeer, navy or taupe, embroidered in tan or henna wool.

**\$15**  
for pretty wool jersey frocks with deep bands of embroidery on the skirts. Navy and brown, mostly.

Navy blue Poirer twill dresses have silk embroidery in tan, gray or henna almost covering the entire skirts and repeated on the collars and cuffs.

**\$16.50**  
for dresses of navy tricotine with gaily colored girdles of tricotelette. Straight-line frocks of Poirer twill are embroidered about the skirts with colored silks, touched here and there with long iridescent beads.

