

THE PEOPLE'S FORUM

Letters to the Editor

A "Secretary of Peace"

To the Editor of the Evening Public Ledger:—How does it seem to you to get peace and what is more, how does it seem to you to get peace by a method that civilization has always rejected...

Letters to the Editor should be as brief and to the point as possible, avoiding anything that would open a denominational or sectarian discussion.

No attention will be paid to anonymous letters. Names and addresses must be signed as an evidence of good faith, although names will not be printed if equivalent is made that they be omitted.

"Neither For Nor Against" To the Editor of the Evening Public Ledger:—As one of the subscribers of a national newspaper, I feel it my duty to express my views on the present situation...

Answers Problem To the Editor of the Evening Public Ledger:—The problem of the day is not how many ways the ten figures can be arranged, but how to use them to the best advantage...

Poems and Songs Desired To the Editor of the Evening Public Ledger:—I would like to see some poems and songs that are suitable for the people's forum...

Can a Reader Supply Poem? To the Editor of the Evening Public Ledger:—I would like to see a poem that is suitable for the people's forum...

Wants a Poem To the Editor of the Evening Public Ledger:—I would like to see a poem that is suitable for the people's forum...

Who Wrote Epigram? To the Editor of the Evening Public Ledger:—I would like to see an epigram that is suitable for the people's forum...

A Tribute to Ward To the Editor of the Evening Public Ledger:—I would like to see a tribute to Ward that is suitable for the people's forum...

Avoid Extravagance To the Editor of the Evening Public Ledger:—I would like to see an article about avoiding extravagance...

Questions Answered Son Invests Mother's Money To the Editor of the Evening Public Ledger:—I would like to see an answer to the question about a son investing his mother's money...

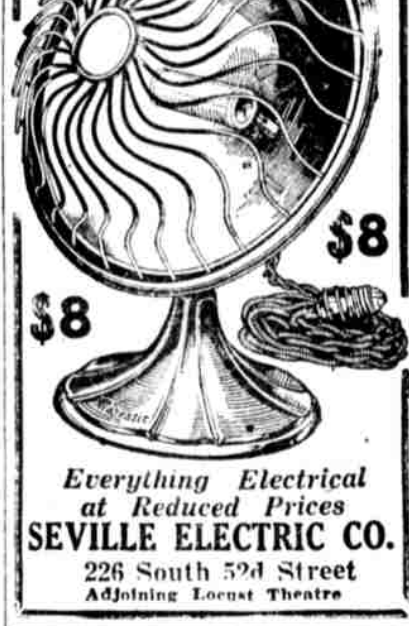
Wants Answer to Problem To the Editor of the Evening Public Ledger:—I would like to see an answer to the problem...

WATER REPORTS WATER REPORTS WATER REPORTS

They seem to call me back again; To those hills so far away; Where the winding trail is filled with sun-shine...

Contributors Christmas Poem To the Editor of the Evening Public Ledger:—I would like to see a Christmas poem...

MAJESTIC HEATERS Everything Electrical at Reduced Prices SEVILLE ELECTRIC CO.



56,250,000 POUNDS (The Total Surplus) BRASS CARTRIDGE CASES

LUCKENBACH LINES Philadelphia to Rotterdam—Amsterdam

CUMMINS LINES U. S. Shipping Board Steel Steamers

THE PACIFIC COAST and Its Winter Resorts Go or Return by the Transcontinental Route through the Canadian Pacific

ORDNANCE SALVAGE BOARD War Trade Building Washington, D. C.

Textile Spindles Made in Philadelphia For Silk, Cotton and Woolen Manufactures

COME TO SCHOOL NOW Hundreds of young men and young women and boys and girls are being fitted for good office positions...

BERMUDA Two Days From New York Here you are free from the snow, ice and chill winds of the North...

CUNARD-ANCHOR Historical places and institutions in Europe—always a source of information and education—may be visited to advantage at this time of the year...

LUCKENBACH LINES Philadelphia to Rotterdam—Amsterdam

CUMMINS LINES U. S. Shipping Board Steel Steamers

PHILADELPHIA TO ROTTERDAM—AMSTERDAM

PHILADELPHIA TO ROTTERDAM & ANTWERP

PHILADELPHIA TO HAMBURG & BREMEN

THE UNITED STATES SHIPPING BOARD EMERGENCY FLEET CORPORATION OFFERS FOR SALE

HOLLAND-AMERICA LINE New York to Rotterdam Via Plymouth and Boulogne-sur-Mer

BERMUDA Two Days From New York Here you are free from the snow, ice and chill winds of the North...

CUNARD-ANCHOR Historical places and institutions in Europe—always a source of information and education—may be visited to advantage at this time of the year...

LUCKENBACH LINES Philadelphia to Rotterdam—Amsterdam

CUMMINS LINES U. S. Shipping Board Steel Steamers

PHILADELPHIA TO ROTTERDAM—AMSTERDAM

PHILADELPHIA TO ROTTERDAM & ANTWERP

PHILADELPHIA TO HAMBURG & BREMEN

THE UNITED STATES SHIPPING BOARD EMERGENCY FLEET CORPORATION OFFERS FOR SALE

HOLLAND-AMERICA LINE New York to Rotterdam Via Plymouth and Boulogne-sur-Mer

BERMUDA Two Days From New York Here you are free from the snow, ice and chill winds of the North...

CUNARD-ANCHOR Historical places and institutions in Europe—always a source of information and education—may be visited to advantage at this time of the year...

LUCKENBACH LINES Philadelphia to Rotterdam—Amsterdam

CUMMINS LINES U. S. Shipping Board Steel Steamers

PHILADELPHIA TO ROTTERDAM—AMSTERDAM

PHILADELPHIA TO ROTTERDAM & ANTWERP

PHILADELPHIA TO HAMBURG & BREMEN