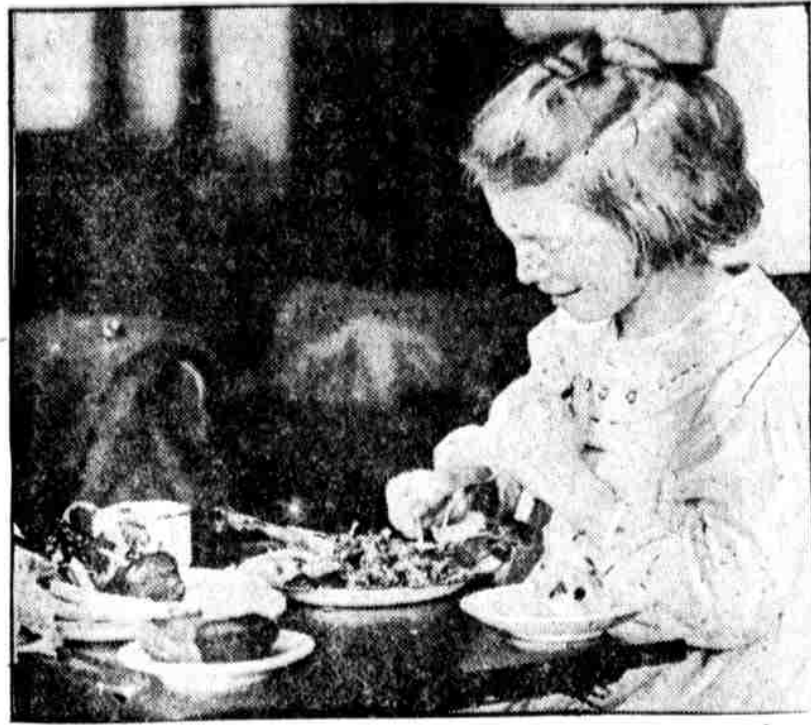




TAKING IT HOME. Jacob Gast made it his business to see that his brothers and sisters have a tree. They live at 1249 South Bonsall street.



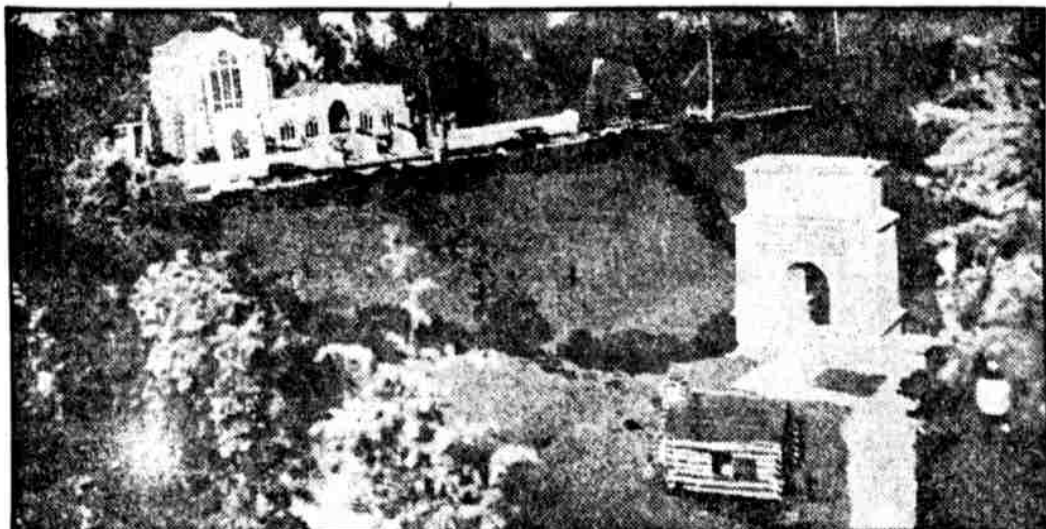
ONE MORE BIG DAY FOR HIM. Henry Chiosso, one of the many mail men who will be busy today delivering Christmas cheer.



PUNISHING A SERVING OF TURKEY. Naomi McGlocklyn is one of the members of the open-air classes of the Stephen Girard School.



GIRLS OF THE KENSINGTON HIGH SCHOOL MAKE MERRY. They presented a Christmas pageant for their parents yesterday. Elizabeth McNamee, as Santa Claus, is listening to the pleas of Carrie Fry and Mary Block. At the right, Miss Pearl Seltzer as St. George and Ethel Paget as the dragon.



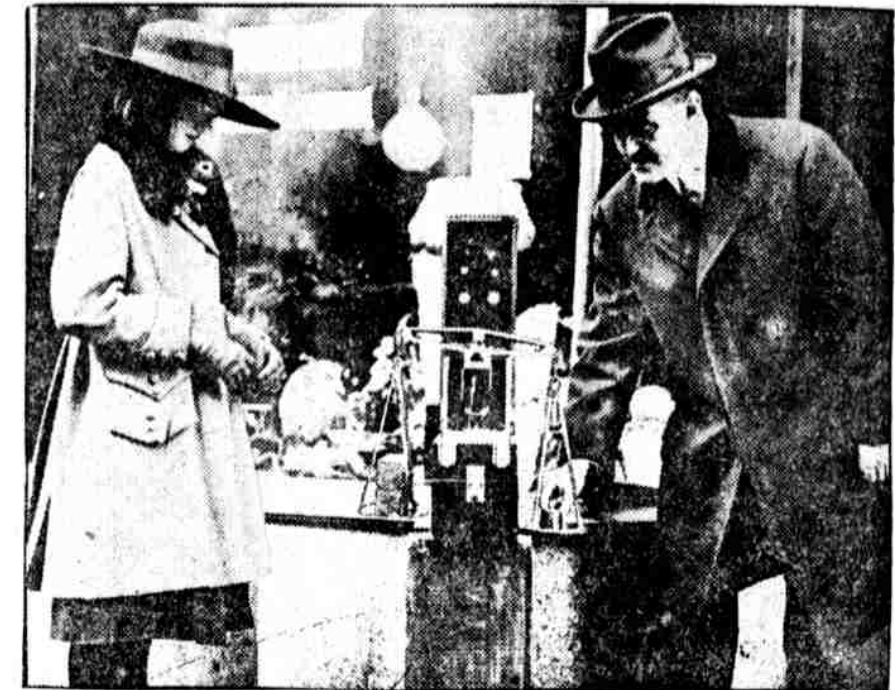
MIRACULOUS REPRODUCTION OF VALLEY FORGE. The Manufacturers' Club, continuing its annual custom, will entertain 2000 poor children at a Christmas party. A feature of this year's program is a faithful copy of the historic spot on the Schuylkill river showing the chapel, the memorial arch and other buildings reproduced in exact replica.



INDIANS IN MISSION PLAY AT SAN GABRIEL MISSION, CALIFORNIA. It is being produced by John S. McGroarty, a former Philadelphia newspaper man. We show one of the women in the play and Waldo, the caretaker of the San Juan mission, Capistrano, California.



GEORGE E. LLOYD, of the Federal Reserve bank, discusses the trend of thrift in an interview on the editorial page.



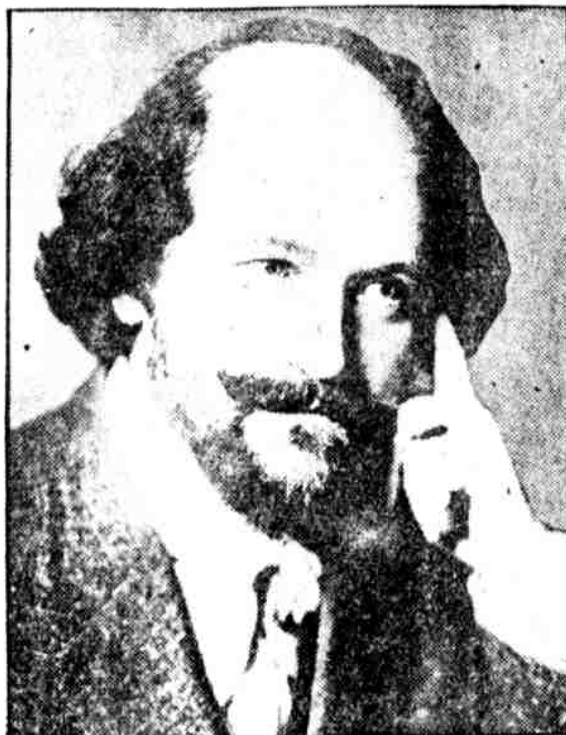
TESTING WEIGHT OF PURCHASES. For weeks the Bureau of Weights and Measures has been stopping purchasers on the street and weighing material. Robert Aiken, special deputy, yesterday stopped Marie Molloy.



EVEN THE PIGEONS GET A TREAT. The tot brought some corn with her for the pigeons of City Hall.



ROSCOE, "FATTY" ARBUCKLE HOME AGAIN. Funny film star was feted abroad.



A SHAKESPEARE DOUBLE. Many have declared the wonderful likeness of George Pappageorge, of Fruitvale, California, to paintings of Shakespeare.

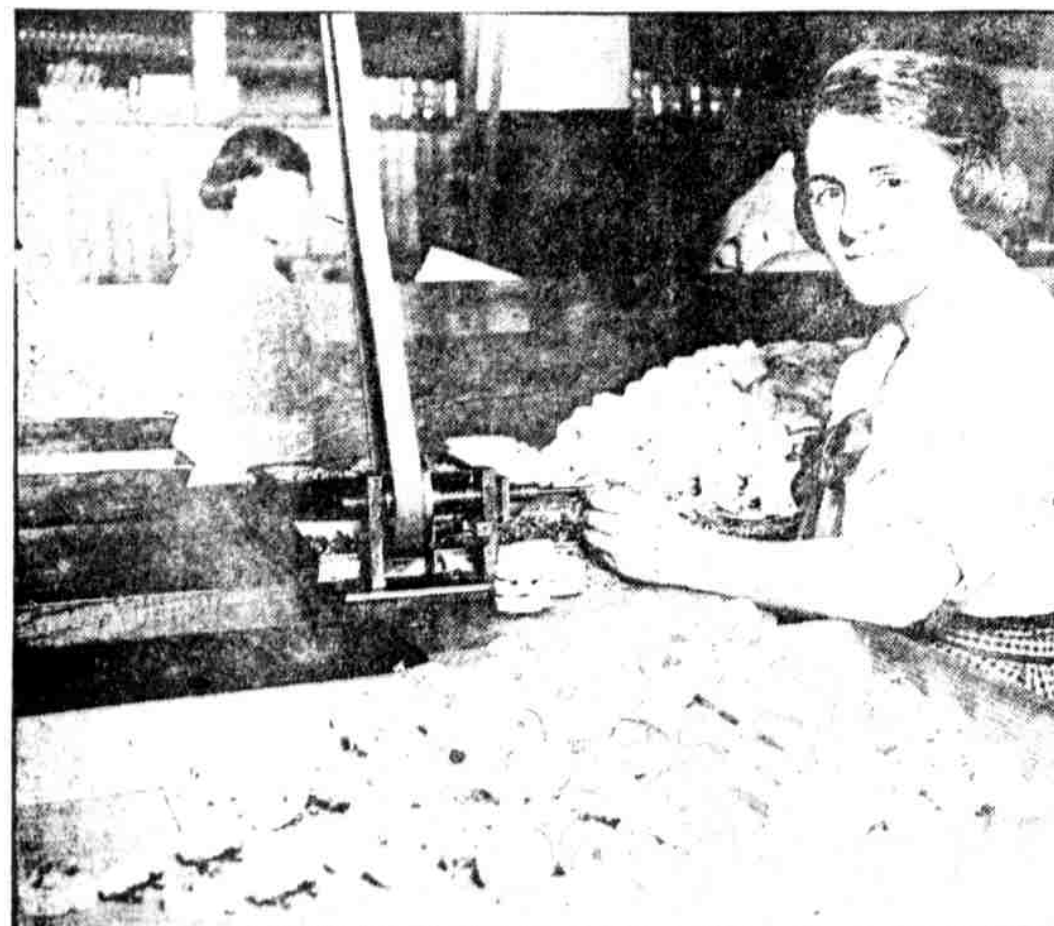


THE NEW CHARLOTTE CUSHMAN CLUB. The club, named after the famous tragedienne, and supported by prominent Philadelphians, is used as a home for women of the stage. It is located at 1010 Spruce street. The desk shown at the left was the property of Charlotte Cushman. At the right is a glimpse of the dining room.



At the right is a glimpse of the dining room.

OUR CITY'S WORKERS AND WHAT THEY DO



MISS VIOLA HUNSBERGER, 1826 Cayuga street, assembling electrical terminals at the Chelton Electric Co., Sinton avenue and Rockland street.

SEMAPHORE SENTINELS



HIS TEAM BEAT YALE. Captain Charles Davis, of the St. Paul School ice hockey team.



THIS IS RESERVE PATROLMAN WATSON SMALLEY, 3638 E. street, who has been located at Front and Chestnut streets for eight years of his eleven years in the Department of Public Safety. He is forty-two years old.

THE BEAUTY CORNER



MISS MOLLYE LELOWITZ 4045 Baltimore avenue Philadelphia

