

# SULLE TRATTATIVE ITALO-JUGOSLAVE

L'Italia Presenta un Ultimatum sul Minimo Delle sue Aspirazioni

Published and Distributed Under PERMIT NO. 241. Authorized by the act of October 3, 1917, on file at the Postoffice of Philadelphia, Pa. A. S. BURLESON, Postmaster General.

Rapallo, Italy, 9 novembre.—Cio' che deve considerarsi un ultimatum alla Delegazione Jugoslava, qui' per i pendenti negoziati tra l'Italia e Jugoslavia sulla questione dell'Adriatico, e' rappresentata dalle definite e minime aspirazioni dell'Italia, fatte note dal Conte Sforza, ministro per gli Affari Esteri e capo della delegazione italiana. Il documento che racchiude dette minime aspirazioni o richieste comprende quanto appresso:

- 1.—La frontiera Istriana, comprendente le Alpi Giulie, la montagna di Nevaso, e la ferrovia da Fiume all'incrocio di San Pietro;
- 2.—Contiguita' territoriale tra Fiume e l'Italia;

3.—Fiume deve essere riconosciuto Stato indipendente, senza qualsiasi controllo da parte della Lega delle Nazioni;

4.—Annessione all'Italia delle isole di Lussia Piccolo e di Cherso;

5.—Annessione all'Italia di Zara;

6.—Annessione all'Italia di parecchie isole Jugoslave, e cio' per ragioni strategiche;

7.—Garanzie per la protezione delle minoranze italiane nella Dalmazia, che rimangono sotto il governo serbo;

8.—Demilitarizzazione di alcune posizioni della Dalmazia, le quali dovranno essere assegnate alla Serbia.

Si asserisce che la presentazione del documento contenente il minimo delle richieste da parte dell'Italia avvenne in seguito a richiesta della Delegazione Jugoslava, la quale le avrebbe trovate eccessive, ma si sarebbe riservata di rispondere dopo averle nuovamente esaminate.

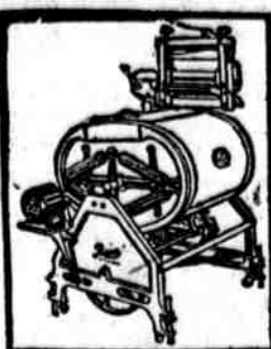
Londra, 9 novembre.—Un dispaccio all'Agenzia Stefani da Santa Margherita dice che secondo un comunicato ufficioso vi e' la generale impressione che una decisiva fase sull'accordo del problema Adriatico sia raggiunta. Il comunicato aggiunge che vi e' una debole speranza che il governo jugoslavo, interpretando i veri interessi e le necessita' della sua giovane nazione, possa apprezzare l'importanza di esercitare uno spirito di conciliazione nella soluzione del problema, il quale e' vitale per il mantenimento della pace in Europa.

Il comunicato aggiunge che lunedì, prima che si riprendesse la discussione, l'On. Giolitti venne informato del

lavoro compiuto dai plenipotenziari italiani. Il Conte Sforza, Ministro per gli Affari Esteri, d'Italia, visito' la Delegazione Jugoslava martedì mattina e la informo' che l'On. Giolitti aveva dichiarato di essere in completo accordo

con le comunicazioni che aveva ricevuto fino a quel momento. Il Deputato italiano Salita formo' anche la Delegazione di vari dettagli supplementari, dando il punto di vista del Governo italiano sulla situazione. Gli jugo-

slavi rimasero in conferenza tutta la mattina e parte del pomeriggio. Mr. Trumbitch, capo della delegazione jugoslava, ha avuto in seguito una intervista con il Conte Sforza, l'On. Bonomi e l'On. Salata.

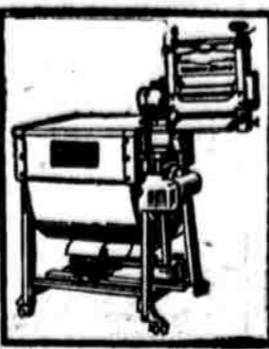


### Electric Clothes Washer Special

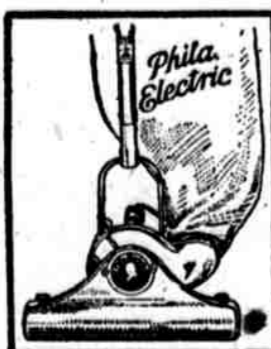
*Prima and Western Electric*

## \$10

(First Payment)



OUR November special to our customers: \$10 places either one of two of the best electric clothes washers on the market—Prima or Western Electric—in your home. The subsequent easy payments to complete the balance will cost you less than you pay your laundress each month. Both the Prima and Western Electric are first-class machines. The Prima is of the efficient oscillating type, and the Western Electric is a cylinder type machine. Both are equipped with swinging wringers.



### Electric Cleaner Special

*Phila. Electric Cleaner*

## \$2.50

(First Payment)

These terms hold good for a limited time only

THE Philadelphia Electric is made exclusively for us and we recommend it to our customers as a really good and efficient cleaner priced \$10 lower than its actual market value today. \$2.50 places the Philadelphia Electric Cleaner in your home—balance at the convenient rate of \$3.50 per month. Offer terminates automatically if present stock of this cleaner is exhausted before end of the month.

Let our experts demonstrate the cleaner and washers to you—without obligation—at the Electric Shop, Tenth and Chestnut Street, or at your District Sales Office.

## The PHILADELPHIA ELECTRIC COMPANY

TENTH AND CHESTNUT STREET

9 South 40th Street 3100 Kensington Avenue 6th and Diamond Streets 18th Street and Columbia Avenue Broad and Ruscomb Streets (Logan) 4600 Frankford Avenue 7 and 9 W. Chelton Avenue

DELAWARE COUNTY ELECTRIC COMPANY  
Chester Media Lansdowne

Buy Direct From the Manufacturers and Save Middlemen's Profits in addition to getting the very latest designs as soon as they are on the market

**GLOBE LIGHTING FIXTURE CO.**  
Manufacturers  
153 N. 10TH STREET Open Saturday 9:30 to 5 P. M.

# Sterling Tires

Sturdy—rugged—dependable. Custom-made. Extra heavy—Extra large—extra strong. STERLING'S are the tires of "high mileage at low cost."—Serial buffed.

Size	FABRIC		CORDS	
	N. S.	Rib	N. S.	Rib
30x3	\$4.00	.....	.....	.....
30x3 1/2	12.50	.....	.....	.....
32x4	15.00	.....	.....	.....
32x4 1/2	16.00	.....	.....	.....
34x4	17.00	.....	.....	.....
34x4 1/2	18.00	.....	.....	.....
34x5	19.00	.....	.....	.....
34x5 1/2	20.00	.....	.....	.....
34x6	21.00	.....	.....	.....
34x6 1/2	22.00	.....	.....	.....
34x7	23.00	.....	.....	.....
34x7 1/2	24.00	.....	.....	.....
34x8	25.00	.....	.....	.....
34x8 1/2	26.00	.....	.....	.....
34x9	27.00	.....	.....	.....
34x9 1/2	28.00	.....	.....	.....
34x10	29.00	.....	.....	.....
34x10 1/2	30.00	.....	.....	.....
34x11	31.00	.....	.....	.....
34x11 1/2	32.00	.....	.....	.....
34x12	33.00	.....	.....	.....
34x12 1/2	34.00	.....	.....	.....
34x13	35.00	.....	.....	.....
34x13 1/2	36.00	.....	.....	.....
34x14	37.00	.....	.....	.....
34x14 1/2	38.00	.....	.....	.....
34x15	39.00	.....	.....	.....
34x15 1/2	40.00	.....	.....	.....
34x16	41.00	.....	.....	.....
34x16 1/2	42.00	.....	.....	.....
34x17	43.00	.....	.....	.....
34x17 1/2	44.00	.....	.....	.....
34x18	45.00	.....	.....	.....
34x18 1/2	46.00	.....	.....	.....
34x19	47.00	.....	.....	.....
34x19 1/2	48.00	.....	.....	.....
34x20	49.00	.....	.....	.....
34x20 1/2	50.00	.....	.....	.....
34x21	51.00	.....	.....	.....
34x21 1/2	52.00	.....	.....	.....
34x22	53.00	.....	.....	.....
34x22 1/2	54.00	.....	.....	.....
34x23	55.00	.....	.....	.....
34x23 1/2	56.00	.....	.....	.....
34x24	57.00	.....	.....	.....
34x24 1/2	58.00	.....	.....	.....
34x25	59.00	.....	.....	.....
34x25 1/2	60.00	.....	.....	.....
34x26	61.00	.....	.....	.....
34x26 1/2	62.00	.....	.....	.....
34x27	63.00	.....	.....	.....
34x27 1/2	64.00	.....	.....	.....
34x28	65.00	.....	.....	.....
34x28 1/2	66.00	.....	.....	.....
34x29	67.00	.....	.....	.....
34x29 1/2	68.00	.....	.....	.....
34x30	69.00	.....	.....	.....
34x30 1/2	70.00	.....	.....	.....
34x31	71.00	.....	.....	.....
34x31 1/2	72.00	.....	.....	.....
34x32	73.00	.....	.....	.....
34x32 1/2	74.00	.....	.....	.....
34x33	75.00	.....	.....	.....
34x33 1/2	76.00	.....	.....	.....
34x34	77.00	.....	.....	.....
34x34 1/2	78.00	.....	.....	.....
34x35	79.00	.....	.....	.....
34x35 1/2	80.00	.....	.....	.....
34x36	81.00	.....	.....	.....
34x36 1/2	82.00	.....	.....	.....
34x37	83.00	.....	.....	.....
34x37 1/2	84.00	.....	.....	.....
34x38	85.00	.....	.....	.....
34x38 1/2	86.00	.....	.....	.....
34x39	87.00	.....	.....	.....
34x39 1/2	88.00	.....	.....	.....
34x40	89.00	.....	.....	.....
34x40 1/2	90.00	.....	.....	.....
34x41	91.00	.....	.....	.....
34x41 1/2	92.00	.....	.....	.....
34x42	93.00	.....	.....	.....
34x42 1/2	94.00	.....	.....	.....
34x43	95.00	.....	.....	.....
34x43 1/2	96.00	.....	.....	.....
34x44	97.00	.....	.....	.....
34x44 1/2	98.00	.....	.....	.....
34x45	99.00	.....	.....	.....
34x45 1/2	100.00	.....	.....	.....

MAIL ORDERS PROMPTLY FILLED. ALL ORDERS SHIPPED C. O. D. SUBJECT TO YOUR INSPECTION

**DURING THIS SALE WE WILL BE OPEN UNTIL 9 P. M.**

**Penna. Tire Exchange**  
1409 RACE STREET  
Philadelphia, Pa.  
Phone—Locust 1848

## "Beaux Arts" Café

Announces

### Armistice Night Celebration

Thursday, November 11th

Patriotic Music  
Songs—Dancing  
Souvenirs

Broad and Girard Avenue  
**JOE MOSS, Proprietor**

## The Oldsmobile

### Six

Famous Oldsmobile quality in the particular body type you desire.

Coupe—\$2145  
Sedan—\$2145  
Roadster—\$1450  
Touring Car—\$1450

Prompt Delivery  
**LARSON OLDSMOBILE COMPANY**  
800 N. Broad Street

# "Go!"

## Atlantic knows that word!

Not especially for the fun of giving the other fellow the slip, or showing the crowd "what she'll do", but for the sheer pleasure of knowing there's a Niagara of power under the hood ready for any emergency—that's when a lively, full-powered gasoline has its strongest appeal.

And that's when the signs point to Atlantic!

Atlantic Gasoline is quick. Because of its high volatility it vaporizes rapidly. It takes the spark with hair-trigger swiftness and explodes in the three-hundredth split of a second. *Action!*

Atlantic is all gasoline! It carries no excess baggage. Free from acid, sulphur, unsaturated compounds and all other undesirable crude oil components. Its purity and stability put sure-footed driving force into every piston stroke. *Power!*

Here's a test: With your carburetor properly set and your tank charged with Atlantic, ride up to a traffic crossing and wait for the word. Then—note the get-away! And the pickup! They are the definition of Instant Go, Powerful Pull and Endless Satisfaction.

And, it's so easy to obtain Atlantic when the tank runs low. The great states in which Atlantic is distributed are dotted with Red Pumps where the sign of welcome is

# ATLANTIC GASOLINE

Puts Pep in Your Motor

THE ATLANTIC REFINING COMPANY

## DODGE BROTHERS BUSINESS CAR

Merchants count it an investment where returns are actual and provable.

The expense of maintenance is comparatively insignificant.

**THORNTON - FULLER AUTOMOBILE CO.**  
Parkway, East of 18th Street Spruce 1040

## PACIFIC LIMITED

### Chicago Milwaukee & St. Paul Railway

## Restoration Pre-War Service

### Chicago-San Francisco

On November 14th the Pacific Limited to California will be restored to service via the Chicago, Milwaukee & St. Paul Railway.

Leave Chicago (Union Station) 10:45 a.m.  
Arrive San Francisco 8:30 (third morning.)

This fast, convenient schedule gives you a daylight departure and a daylight arrival.

Observation sleeping car, standard sleeping cars, tourist sleepers, coaches and dining car.

The Pacific Limited will have every appointment that makes for travel comfort.

The route is the most direct to California over the double tracked roadway of the Chicago, Milwaukee & St. Paul—Union Pacific and Southern Pacific Lines.

For sleeping car reservations and full information, address

Geo. J. Lincoln, General Agent C. M. & St. P. Ry.  
208 Denckla Bldg., Phone Walnut 4047

GEO. B. HAYNES, General Passenger Agent, CHICAGO