

'MOTOR MASHER' CLIPS GIRL'S HAIR

Leaps From Car to Attack Frankford Young Woman, Who Rebuffs Him

Police are today searching for a "back-the-clipper," who beat Miss Lillian Gallagher, eighteen years old, of 2626 Rhawn street, and clipped a lock of her hair when she refused to go for a ride in his automobile on Frankford avenue near Ashburner street yesterday.

John Kase, motorman of a Frankford trolley car, saw the man attack Miss Gallagher. He nudged him, but was unable to overtake him. Neighbors of the girl, who were on the trolley car, took her home.

The "clipper" is described as a stout, middle-aged masher, who has annoyed several young women on the Roosevelt boulevard by invitations to ride in his automobile.

Miss Gallagher was on her way home from work, and had reached a vacant lot just above the end of the Frankford "L," when she was accosted.

She ignored his proffer of a ride and hurried toward the trolley tracks to board a Tacony car. Then the "clipper" left his automobile and seized the victim by the hair. When she screamed he struck her on the jaw, knocking her to the ground.

At this juncture the Frankford trolley car approached. The man snatched a lock of the girl's hair, sprang into his automobile and drove away.

Detectives Fosmire and Hood, of the Tacony station, are searching for the man.

Motorist is Injured

When his automobile was demolished by a trolley at Thirtieth and Wolf streets last night, John Beverly, of Newtown Square, was seriously injured. Beverly was taken to the Methodist Hospital with a fractured skull. Witnesses say that he drove directly in front of the car.

HAD PENN OWNED MAN O' WAR CHICAGO WOULD BE IN PHILA.

Founder Landed 236 Years Ago and Bought Land Measured by Horse's Speed

Today marks the 236th anniversary of the landing of William Penn in America. Shortly afterward he bought most of the region now included in the city limits and reached by the Paoli, Wawa, Chestnut Hill and other locals for the approximate contents of a country general store.

The Indians seemed satisfied, however, most likely because the purchase price included "twenty fathoms of strong water." That much strong water ought to buy a block or two in the heart of the city even today. Anyhow, the Indians gave three cheers for Penn and went home figuring out how much they would have if they could sell the rest of North America at the same price.

Penn landed on these Delaware shores October 27, 1682, and brought his Welcome with him, seeing that was the name of his ship. He went ashore at New Castle, Del., to take possession of the land granted him by King Charles in payment of a debt of \$80,000 owed to Admiral Penn, father of Philadelphia's founder. It seems that instead of writing checks, Charles handed out small sections of the map of the new world, wherever that was, to his creditors, who had no comeback.

Penn's next move was to sail up the Delaware to Third and Dock streets and

select a neck of land between the Schuylkill and Delaware rivers as the site of what later became Philadelphia. A little afterward he plied over the first deal that appears on the records of the Philadelphia Real Estate Board. He bought the city from the red men, who got a lot redder when they saw what a fine town they had let go for a bunch of odds and ends.

Among the stuff traded in by Penn for the city and its suburbs was the following: Twenty guns, twenty pounds of powder, forty tomahawks, 500 knives, thirty pewter spoons, 300 pipes, 100 hands of tobacco, beads, gimlets, Jewshaps, molasses, salt and other then valuable accessories.

Thirty glass bottles, probably used for home brew purposes, were included in the deal.

The acquired land lay on the west side of the Delaware between the Dock and Chester creeks and as far back as the deal.

from the river as a man could ride in two days on a horse.

If Penn had entered Clarence Kummer on Man O' War this city would be running frequent local trains to its leading suburbs, Pittsburgh, Chicago and St. Louis.

Man Takes Life by Gas
With a gas tube in his mouth, Emil Wits, sixty-eight years old, was found dead in the bedroom of his home, at 3138 Tusculum street, last evening. His daughter, Miss Louise Wits, smelled gas about 6 o'clock and in searching for the source of the fumes found her father lying on the bed in his room. A nearby physician pronounced him dead. The man was despondent because of ill-health.

DEVELIN FIGHTS COURT BILL
Councilman Opposes Municipal Tribune's Latest Move
Councilman Develin, who has assailed the huge money demands made by the Municipal Court, today said he was opposed to granting the court any more funds such as called for in a bill introduced by Councilman Montgomery.

The latest demand is for \$13,000 to defray additional expenses for the current year. The money is to pay for extra help and special services, groceries, meats, vegetables and laundry.

"I have not seen the ordinance," Mr. Develin declared, "but in general I am opposed to granting any more money to the Municipal Court."

Note the Name
EDWIN J. SCHOETTLE CO.
PAPER BOXES & MAILING TUBES
533 NORTH 11th STREET
PHILA.

DIAMONDS BOUGHT
House of Established Reliability
Highest Prices—Value Guaranteed
LIGHTY'S 6 North 11th St.
1 Dear ab. Market

1920 PAIGE LARCHMONT
Run 3600 miles; equipped with cord tires, bumper, spotlight, Houdaille shock absorbers front and rear, motor meter and Warner lens; painted Quaker brown with brown upholstery; cost originally \$1100; will sell for \$2200; guaranteed.
BIGELOW-WILLEY MOTOR CO.,
304 N. BROAD ST.

Studebaker

Automobiles

"THIS IS A STUDEBAKER YEAR"

BECAUSE
The majority of Studebaker cars are sold to people who know automobiles and appreciate a remarkable piece of machinery. Studebaker contains wonderful works in a wonderful case.

Open and Closed Models
\$1672 to \$4245 for Immediate Delivery in Philadelphia
Cord Tires and Automatic Gear Lock Standard Equipment

The Studebaker Sales Company
847-49 North Broad St.
Popular 6820

Barber Scissors, Clippers, Razors and Manicure Scissors.
Also Safety Razor Blades Resharpener
Filbert Grinding Co.
1229 FILBERT ST.

NAVAL STORES
Steam Distilled
PINE OIL
The PENNSYLVANIA REFINING Company
Lomb. 4235 Delaware Ave. & South St.

1918 Overland Coupe
3-pass, 6-cyl, Continental Motor run 8000 miles. Body worth price of car.
Perfect Condition
A. J. CHRONISTER
N. E. Cor. 40th and Ludlow Sts.
2nd Floor

Latest Styles
From \$1.00 in Vienna
\$1.00 for \$2.00
\$2.00 for \$3.00
\$3.00 for \$5.00
\$5.00 for \$7.00
\$7.00 for \$10.00
G. Ervin Donovan, 135 S. 10 St.

HARTMAN RADIUM LUMINOUS DIALS
Idea added to watch or clock dial that really you just can't do without. Why not ask your jeweler?
FRANK HARTMAN STUDIO
Artistic Radium Dial Painting
24 So. 17th St., Phila., Pa.

PRODUCTION ENGINEERS
35 Years' Experience in Labor-Saving Devices & Methods
Designers and Builders of Automatic Machinery, Punches and Dies and Manufacturing Equipment of Special Character
Engineers and Machinists
A. NACKE & SON
Bell Phone: Walnut 2747 236-242 S. 9th St., Phila. Keystone Phone: Main 3311

DIABETES
Why Suffer Longer? Drink
Mountain Valley Water
Famous curative water from near Hot Springs, Ark.
ENDORSED BY PHYSICIANS
Mountain Valley Water Co., 718 Chestnut St.
Served at leading Clubs, Hotels, Cafes and P. R. R. dining cars. Sold by first-class grocers, druggists, etc., or direct by us.

Here is Your Electric Cleaner— for \$2.50 First Payment



WE are offering our customers during our semi-annual Fall sale an exceptional opportunity to buy a really good electric cleaner—the Philadelphia Electric—at a price \$10 lower than its actual market value today.

Terms are exceptionally convenient during this special sale:

\$2.50
with the order and balance \$3.50 per month

Following out our policy of protecting our customers on prices, there has been no advance in the price of the Philadelphia Electric Cleaner.

Remember: This sale has only a little longer to run. Demonstrations of the Philadelphia Electric Cleaner at the Electric Shop and District Offices, or, phone Walnut 4700 for full information.

Jiffy-Jell

Real-Fruit Desserts
Flavors in Vials



Fruit in Bottles

Condensed Fruit Juices in each Jiffy-Jell Dessert

Remember how Jiffy-Jell excels the old-time quick gelatin desserts.

Jiffy-Jell is a real-fruit dainty, rich in fruit. We crush the fruit, condense the juice and seal it in a vial. You get the delights and healthfulness of fruit, not a mere fruity taste.

The fruit is plentiful. We crush, for instance, half a pineapple to flavor one dessert. This is done



in Hawaii—fruit too ripe to ship. The fruit alone might cost you as much as the whole dessert.

This is most important. People need fruit daily—real fruit, not mere flavor. Jiffy-Jell serves it in delicious form, with a moment's trouble, at a trifling cost. Join the millions who enjoy it. Start this week and send the trade-marks for the molds we offer free.

Free This Week



Eight Fruit Desserts



Eight fruit desserts are placed at your constant call. A package serves a family and costs a few cents only.

The desserts are light, as desserts should be. They are rich in needed fruit. And nothing is more welcome.

Jiffy-Jell comes ready-sweetened. It comes acidulated with lemon or grape acid. Simply add boiling water, as directed on package, then the fruit essence from the vial and let cool.



You need it now
Now starts the great season for Jiffy-Jell desserts. Go get a variety. Then send us the circle trade-marks for the gifts we offer this week.

You lovers of Jiffy-Jell know its delights. You who don't know it should try it now. Compare it with the old desserts without the fruit in bottles. It will give you a new conception of these quick fruity dainties.

With the molds we will send a recipe book and offers on all our molds.



Ten Flavors in Glass Vials

- Mint
- Lime
- Raspberry
- Cherry
- Loganberry
- Strawberry
- Pineapple
- Orange
- Lemon
- Also Coffee Flavor

Jiffy-Jell

Real-Fruit Desserts
Rich in real fruit essence
A bottle in each package

Gifts to Users

Buy from your grocer a supply of Jiffy-Jell this week, and send us the trade-marks. Send us 6 for any Pint Mold or the Set of Six small molds. Send 2 for the Jiffy-Cup or 2 and 10 cents for the spoon. The Pint Molds are as follows:

- Style—B—Heart-shaped.
- Style—C—Fluted.
- Style—D—Salad mold.
- Style—E—As shown above.
- Style—H—Star-shaped.

These molds help Jiffy-Jell users to serve it in attractive ways. Send for any and we will offer you the rest.

Check Here

- Pint Molds
- Style—B
- Style—C
- Style—D
- Style—E
- Style—H
- Set of Six
- Jiffy-Cup
- Spoon

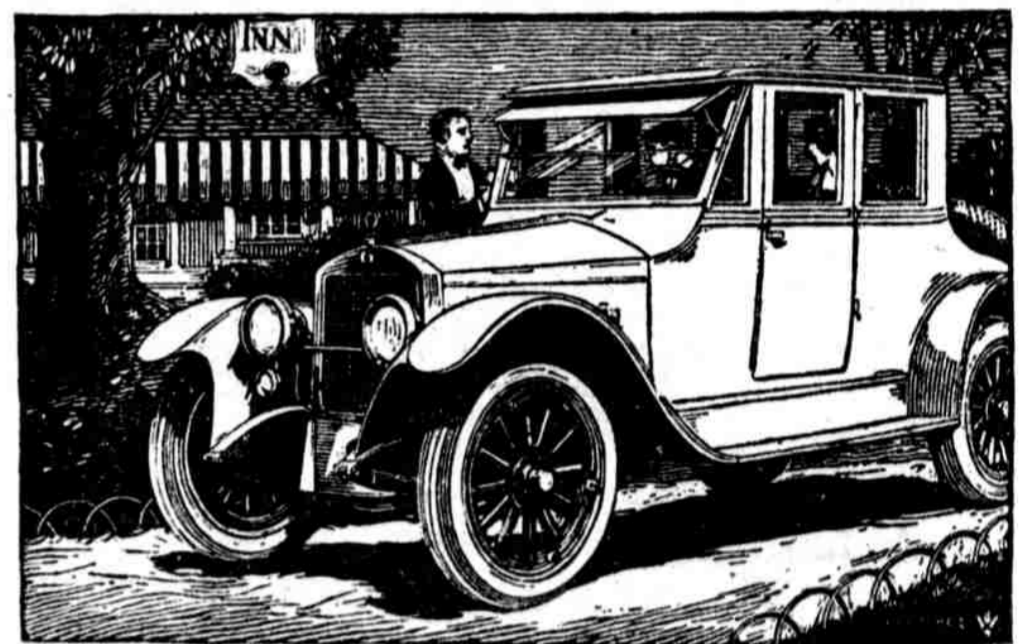
Jiffy Dessert Co.,
Waukesha, Wis.

MAIL THIS

I enclose trade-marks for which send the gifts I check.

Send 6 trade-marks for any Pint Mold or the Set of Six. Send 2 for the Cup or 2 and 10 cents for the Spoon.

STANDARD EIGHT



A POWERFUL CAR

To get the full comfort of motoring, you need something more than the roominess, modish upholstery, and lack of vibration of the Standard Eight.

You need also its tremendous, perfectly controlled power. Throttle it down to a mile an hour. Pick her up to express speed some place where such speed is proper. Tackle a merciless hill on second, or just once, for the foolish feat's sake, on high.

You know now the full comfort which comes from driving a car whose power is equal to any need.

Vestibule Sedan, \$5000	Sedan, \$4800	Sedanette, \$4500	Coupe, \$4500
Touring Car, \$3400	Roadster, \$3400	Chassis, \$3150	

Above prices f. o. b. Butler, Pa.
PRESENT PRICES GUARANTEED UNTIL APRIL 1ST, 1921

EASTERN MOTORS CORPORATION

Broad at Wallace

Philadelphia, Pa.



EASTERN MOTORS CORP. BRANCH
Camden & Trenton, N. J.
UNION MOTOR CAR COMPANY
255 Wyoming Avenue, Scranton, Pa.
HIGH & TROUT
Pottsville, Pa.
R. J. MILLS
115 S. Railroad St., Pottsville, Pa.

ALBERT H. EIDAM
Hazelton, Pa.
J. V. HOFFMAN
Waynesboro, Pa.
MORI BROTHERS
Vineland, N. J.
J. WOODS BATDORF
Lancaster

UNION MOTOR CAR COMPANY
Wilkes-Barre, Pa.
SERVICE STORES COMPANY
Barwick, Pa.
WILLIAM L. SCHWARTZ
Lehigh, Pa.
DEAKYNE & SMULLEN
Chester, Pa.

We have some good territory open and a remarkable contract goes with it