

WOMAN SUICIDE HAD HOME HERE

Mrs. Mary Newell, Who Leaped From Steamship, Roomed on Pine Street

Mrs. Mary Newell, the woman who committed suicide Wednesday night by jumping from the Fall River Line steamship Providence a few miles off Bridgeport, Conn., recently became a resident of this city.

Mrs. Newell engaged a room from Mrs. M. Williamson, 5327 Pine street, about two weeks ago. She was recommended by the West Branch Y. M. C. A.

"She evidently was a woman of refinement and good breeding," Mrs. Williamson said. "She said her husband from whom she had been separated for several years, was Dr. J. Otus Newell, a Boston surgeon.

"She was an accomplished pianist but she seemed to labor continually

under some great mental strain. She worried a great deal over her daughter, who had married in New York city. Wednesday she received a letter from the daughter. She tore it into small bits. "She gave me the key to her room and departed, saying, however, before she left, that she would write. I thought at the time that her mind appeared to be weakening. Her daughter, Mrs. L. Ernest Collier, called me by telephone yesterday and asked me about her mother. I told her what I knew."

Mrs. Newell also had a son, He is Beach Newell, and lives in Baltimore.

Wills Probated Today

Wills admitted to probate today were those of John J. Chambers, 2520 Diamond street, \$15,000; Jacob M. Henning, 919 West Somerset street, \$5,075, and Thomas F. Jenkins, 216 South Fort-third street, \$3,250.

Mayor Has Smith's Portrait

A portrait in oils of former Mayor Thomas B. Smith, painted by Adolph Philadelphia artist, has been approved by the art jury and placed for enshrouding in Mayor Moore's office in City Hall. In a few days it will be placed upon the walls of the Mayor's reception room with other portraits of past mayors.

Store Hours, 9 to 5:30

A tremendous stream of business is flowing in—the public appreciates Gimbel values.

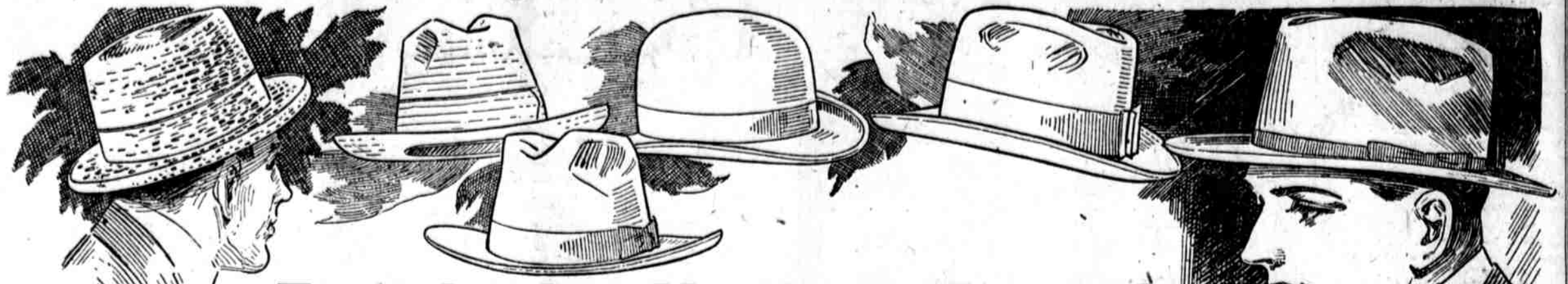
GIMBEL BROTHERS

MARKET : CHESTNUT :: EIGHTH : NINTH FOR SATURDAY

Friday, October 1, 1920

We require several hundred salespeople—openings for those as well just starting in business life.

Men's Derby and Soft Hats at \$3.50



First Quality Hats!—A Triumph in Value-Giving

Derby hats, soft hats, cloth hats—the late blocks; the late tricks of finish; the colors in demand. The Derby hats are black.

Enough styles and colorings to meet your exact demands. \$3.50 Now, it's just this way. Here is all needed hat quality and hat style at \$3.50. If the high cost of living plagues you now, it will be because a few thousand of us like to grumble—and will pay \$5 to \$10 for hats right here. Gentlemen, it is with you. This is the big hat news of three years!

—Gimbels, Ninth and Market Corner



Do Not Buy Ginger Ale That "Fizzes Over"

Ginger Ale that "fizzes over" when opened has been improperly carbonated, due to the fact that all the air has not been eliminated. Peacock Ginger Ale never "fizzes over" because of our exclusive method of making, all air is eliminated.

When you buy Peacock Ginger Ale notice how much more sparkling it is than other ginger ales. We boil and twice filter every drop of water used in Peacock before it is carbonated and combined with the pure flavoring ingredients. Peacock Ginger Ale comes from the bottle bubbling with vim and sparkle. The first taste of Peacock Ginger Ale will convince you of its superiority.

At grocery and drug stores in 16-ounce bottles. Look for the Peacock trademark and ask for PEACOCK.

You can also get Peacock Root Beer, Birch Beer, Sarsaparilla and Lemon Soda.

WEISBROD & HESS, Philadelphia

PEACOCK Ginger Ale

Why We Sell Cheaper—Location

Open Even. Until 5:30 o'clock Saturdays, 6 o'clock

R. LEVY & SON'S

DEPARTMENT STORE, 726 ARCH ST.

New Fall Clothes For all the Family

Select a Bill up to \$50 for **\$1.00** A WEEK

A Very Special Sale

Women's New Fall & Winter Suits \$29.75 Coats

Values up to \$35.00

We bought quite a number of brand new sample Suits and Coats which we offer at an attractive saving. We also include a number of garments from our regular stocks.

Every new style of the season combined in the most wanted, and in the latest fall shades.

Women's Silk and Serge Dresses **\$19.98**

Locally attractive styles in latest draped and ready-made, bordered, tailored models. These dresses are usually good values at our special price.

Men's & Young Men's **\$35** Fall Suits & Over-coats **\$29.50**

The new English one and two button models as well as conservative styles. Of fine cassimeres, worsteds, chevots and flannels in browns, blues, greys

Boys' **\$18.50** Wool Norfolk Suits **\$12.50**

Fine serges, cassimeres, worsteds and chevots. Lined pants. Sizes to 17 years.

Girls' Apparel—Shoes For The Entire Family

Millinery for "Everywoman"

at \$8.50, \$10.50, \$12.50 \$13.50, \$15 and \$18.50



Hats for youthful types. Hats with the youthening touch for the woman who wants to look her best. Hats, toques and bonnets for dignified mothers and grandmothers.

—Gimbels, Millinery Salons, Third floor.

Velvet Ready to Wear Hats at \$3.95, \$4.95 and \$5.95

Silk-velvet—mostly in the lovely soft "full" shapes. San Toys, too—and mushroom with tam crowns and medium sailors. Black, brown, navy blue, beaver and red.

—Gimbels, First and Third floors.

Putting over the ball and bucking the line—the season's tests of "true blue" in boys' clothing

BOYS' NORFOLK SUITS

These in Ages 8 to 18 Years

At **\$13.75**—With Extra Trousers, at **\$17.50** Save \$7.50

Now for the football afternoons. Time is all too short—the boy thinks!—to return home for the old suit—it's the school suit that's often put to test. Gimbels stand the test of Quality, Service and Economy. These at **\$13.75** and **\$17.50** are of all-wool tweeds and cassimeres in single- and double-breasted Norfolk models with patch, slash or flap pockets. Coats are lined with mohair.



Boys' Norfolk Suits, at **\$16** With Extra Pair of Knickers at **\$20**

Fine all-wool tweeds in grays, browns and olive mixtures. Ages 8 to 18 years.

Corduroy Suits, at **\$9.75**—Save **\$3.75**

Ages 8 to 18. Strong, sturdy school suits with reinforced seams and full-lined knickers. Boys' Junior Suits at **\$8.75**—Save **\$5** More of those fine quality all-wool cassimeres with box- or knife-pleated coats. White detachable collars. Full-lined straight-knee trousers. Ages 3 to 10 years.

Boys' Tan Raincoats at **\$6.50** With Sou'wester hat. Guaranteed waterproof.

—Gimbels, Third floor.

Girls' Dresses—a Smart Taffeta

Dress-up Model—Special at **\$21.75**

Cutest distended pockets—that "catch in" smartly. Typical "Moyen Age" treatment. Navy blue, reindeer. But the prettiest part of all is—the soutache braid-treatment—three-toned! 12-, 14- and 16-year sizes.

Good-Looking Serges—Specials at **\$17.75**

Mostly with kilted skirts. Some are trimmed taffeta, others with gay plaid silk. And some have braiding—12-, 14- and 16-year sizes.

700 New Winter Coats—Specially Priced **\$19.75, \$25** and **\$29.75**

A dozen styles—variously of velour-cheviot, silvertone-velour and smart heather cloakings. Belted models—and swirl-backs—and yoke styles.

—Gimbels, Salons of Dress, Third floor.



Candy Specials

Chocolate-Covered Pineapple in Cream **68c lb. Box**

AND—Chocolate-Covered Caramels **68c lb. Box**

ALSO—Chocolate-Covered Toasted Marshmallows **68c lb. Box**

—Gimbels, Chestnut Street Annex, Grand Aisle, and Subway.

Quaker Coffee 48c

In 25-, 10-, 5- or 3-lb. Lots, lb. at

This is the coffee served in the Gimbel Restaurant and Tea Room.

6000 lbs. of Fairmount Blend Coffee, lb. at... **32c**

10,000 lbs. of Liberty Bell Blend Coffee, lb. at... **35c**

—the foregoing are sold in 25-, 10-, 5- or 3-lb. lots.

Butter at **66c lb**

This is the "Brookfield Farm" creamery butter, 17lb. net weight, in four quarter-pound packages; this method keeps wrapped all except the piece on the table. 66c lb. Counter delivery.

Bacon, **39c lb.** Eggs, **65c Doz.**

The Eggs come a dozen in a carton. 65c a dozen. The Bacon is Philadelphia sugar cured; lean—streaked or fat, 39c lb. "Lenox Brand" Cocoa, freshly ground, at 28c lb. or 4 lbs. for 95c. New-season sweet-drawing mixed Tea, also Orange Pekoe Tea, at close to half price, 4 lbs for \$1.50, or 3lb. for \$1.00.

—Gimbels, Pure Food Store, Chestnut Street Annex.

Subway Store Sale of Girls' Coats at \$13.75



Smart, Warm School or Dress Coats at **\$13.75** Many Half-Price

Of fine grade; soft, smart, serviceable winter fabrics—such qualities as you couldn't buy enough of for a coat for less than the price of any coat in the entire two hundred and fifty!

Sixteen styles—with smart yokes—panel-treatments—or swirl-backs—or with the new, big cape-collars. Long-waisted styles and cunning short-waisted styles. And great, big pockets that trim up the whole coat!

Polo-Cloths—and Chevots—and Kerseys—and Zibellines—and Velours—and Silvertones—and Silvertips

And colors! Plenty of lovely browns—plenty of smart reindeers—plenty of every blue that girls like. Sizes for 6 to 14 years. Seventy-Five Have Big Fur Collars—and There Are Wonderful "Samples" Included

\$13.75 Fur-Collared \$13.75 Fur-Collared \$13.75 Cape-Collared

—Gimbels, Subway Store.

Men's and Young Men's FALL SUITS at \$20, \$27.50 and \$32

In styles that young chaps fancy and older men desire. Gray. Brown. Green. Chevots and cassimeres and tweeds. All sizes. At \$20, \$27.50 and \$32. 1600 Pairs of Men's Worsteds, Serge and Men's Rubberized Raincoats—Belt Back or Chevot Trousers at **\$5.75**—Save a Third All-Around Belt, at **\$10, \$12.50 and \$15**

—Gimbels, Subway Store.

Men's Shoes at \$4.95 For Fall and Winter

Tan cord-calf and black gunmetal leathers. Broad and narrow lasts, welted soles. Sizes 6 to 10. Special for Saturday at **\$4.95**.

Boys' School Shoes at **\$3.95** Well-made and of gunmetal leather; lace. Sizes 10 to 6 1/2. Children's Shoes at **\$1.95 and \$2.45** Sizes 5 to 11 at **\$1.95** Sizes 1 1/2 to 2 at **\$2.45**

In the Subway Fur Section—Kit Leopard Coats \$126.75

with new large collar of nutria, sealine (dyed coney) or raccoon, at \$126.75

Fox Scarfs—Soft and fluffy. In taupe and brown—**\$23.50 up to \$79**

—Gimbels, Subway Store.