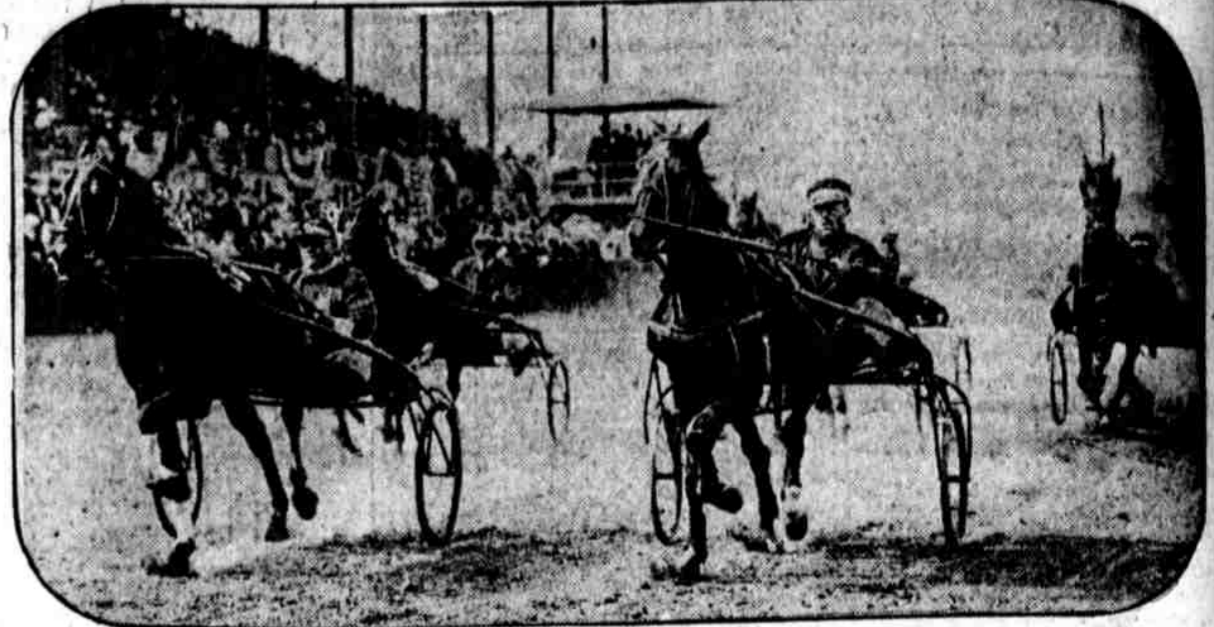




A THRILLING MOMENT. Twilight, entered and ridden in the Delaware state fair horse show by Miss Lydia du Pont, got a little boisterous in the ring yesterday afternoon. It was wonderful how the youthful rider was able to hold on



THEY MEET IN CHICAGO. Senator Harding stops off to talk things over with Major General Leonard Wood. Mrs. Harding is shown beside the senator



FARMER WORTHY WINNING. The finish of the first heat of the 2:24 class pace at the Wilmington fair yesterday afternoon, showing how close Gladys H. and J. Direct followed the winner



OUR NATIONAL CHAMPION. William Tilden snapped while winning national tennis championship. Tilden will be seen at Mannheim this afternoon in the East-West doubles



EDMOND W. FRAIN discusses everyday dangers in an interview on the editorial page



BROTHER AND SISTER. Mother has just combed their hair and started them to a South Philadelphia school. They are Anna and Charles Santaro. Both seem happy



HIS FIRST SCHOOL DAY. A South Philadelphia mother taking her lad to the McCall School just before the opening session of the fall term yesterday



LEAVING THE BRIXTON JAIL. Mrs. Terence MacSwiney, wife of the Lord Mayor of Cork, after paying a visit to her husband, who is starving himself to death. The turnkey is standing in the jail door



AT LEWES, DELAWARE. The oxen and cart still find a place in the lumber industry of the Delaware bay town



JUNIOR TENNIS CONTESTANTS. Lansdowne courts have seen many a fast game during the junior contests of the last few days. Among the players who have forged themselves through to the semifinals are



(left to right) Henry L. Barker, Elwood F. Altmaier and George Phillips

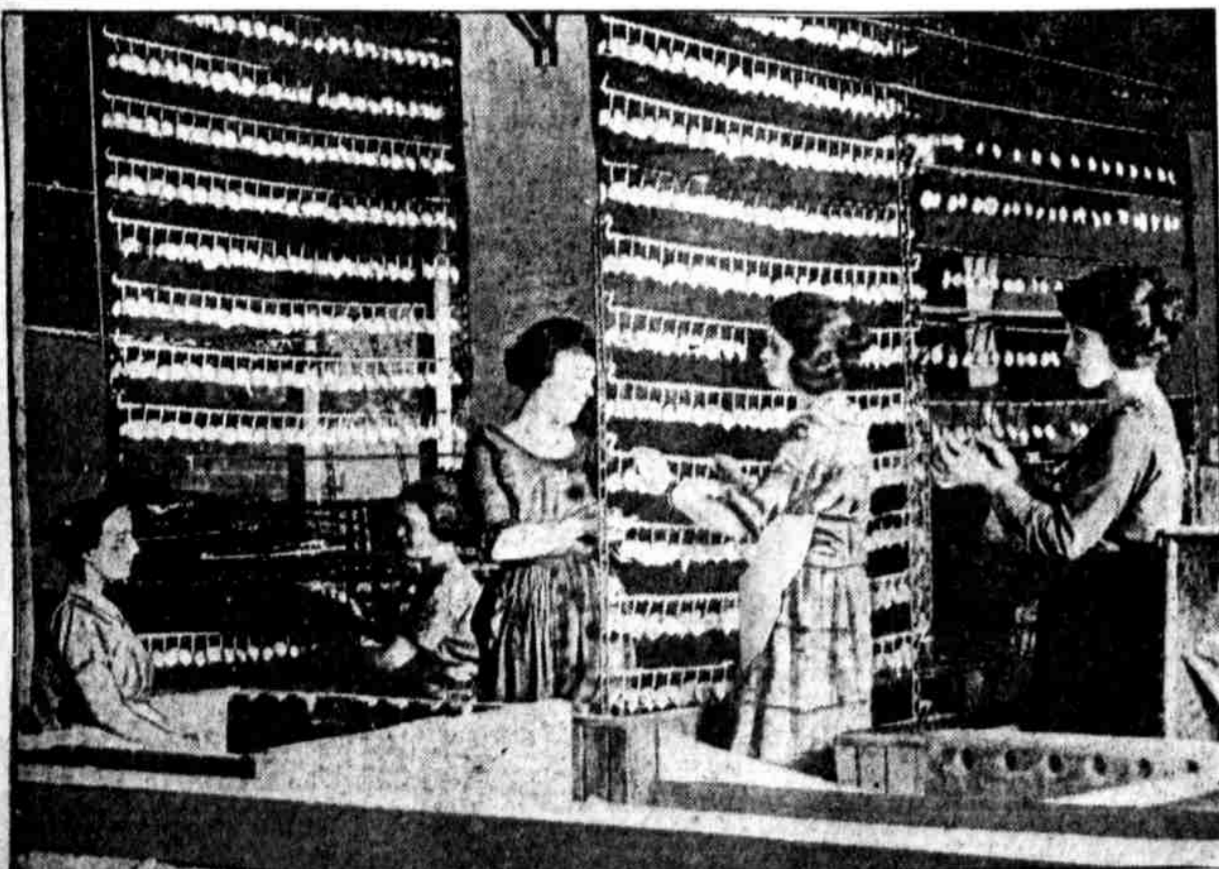


NEW AT RITTENHOUSE SQUARE. The foot-power scooter is being enjoyed on the cement pavement of the square by Ruth Longacre



MISS BETTY EDGAR, 2816 West Lehigh avenue, Philadelphia

OUR CITY'S WORKERS AND WHAT THEY DO



AN ICING TROLLEY. 38,000 cakes can be placed on the machine at one time to be dipped into the tanks of icing. It is being operated at the Colonial Biscuit Co., Twelfth and Brown streets. The workers are Mrs. Elizabeth Weir, Miss Charlotte Gerhart, Miss May Watson, Miss Helen Mullin and Miss Helen Coyle



ILLUSTRATING HEALTH RULES. The Picture Man at the Byberry fair under the auspices of the Philadelphia Health Council by rapid cartoon work teaches simple rules of health



POLITICAL ADVICE TO WOMEN. Miss Lillian Stevens Howard, of the Republican Women's Committee of Pennsylvania, at Byberry fair, yesterday



WOMAN GETS MILITARY DECORATIONS. Lieutenant Flora Sandes served as private in Serbian army until promotion came for bravery. She is now in Australia

THE BEAUTY CORNER



MISS BETTY EDGAR, 2816 West Lehigh avenue, Philadelphia