

**TO ASK LEGION MEN
TO HELP FIELD DAY**

County Committee Meeting Will Hear of Plans to Entertain Olympic Winners

EBY SERVES AT ANTWERP

Philadelphia posts of the American Legion will be urged tonight at the county committee meeting in the Chamber of Commerce assembly room to give earnest support to the field day on Franklin Field, September 18. Olympic heroes will participate in this notable event.

Mayor Moore is chairman of a civilian committee, which will meet the returning Olympic heroes and escort them from New York to Philadelphia. The meet will serve as a reception to them. Valuable cups and sets of gold, silver and bronze medals are being provided by prominent citizens and business firms.

Edward J. Koellsted, chairman of the Legion athletic committee, and George G. Stranahan, who heads a special committee on field day, are being

SHIP BY TRUCK
We make daily trips to all points in New York, Connecticut, Rhode Island, Massachusetts, Pennsylvania, Maryland and Washington, D. C. Insurance if desired. Return load rate on furniture, 60c per mile.
HALL TRANSPORTATION CO.,
25 Warren, Newark, N. J.
Tel. Mar. 6831. Night & Sun. Ph. Mar. 1409

Note the Name
EDWIN J. SCHOETTLE CO.
PAPER BOXES, MAILING TUBES
533 NORTH 11 1/2 STREET
PHILA.

YOUNG MAN
Of good character and ability, able to invest \$5000 to \$10,000, can make very advantageous connection with sound, highly profitable business; highest credentials furnished and required. Investment secured.
BOX B 114, LEDGER OFFICE

DIAMONDS BOUGHT
House of Established Reliability
Highest Prices—Value Guaranteed
LICHTY'S
6 North 11th St.
1 Door ab. Market

**Trains Annulled
LABOR DAY**
Monday, September 6
The following trains will not be operated Monday, September 6:
Between Philadelphia and Trenton
Trains leaving Camp Dix 5:30 A. M. for Market Street Wharf, and trains leaving Market Street Wharf 5:00 and 5:00 P. M. for Trenton, will not be operated.
Train leaving Trenton 6:41 A. M., Monday, September 6, will make all local stops to Camden.
Between Philadelphia and Camp Dix
Trains leaving Camp Dix 5:30 and 6:20 A. M. for Market Street Wharf, and trains leaving Market Street Wharf 5:04 and 5:50 P. M. for Camp Dix, will be annulled.

Pennsylvania System

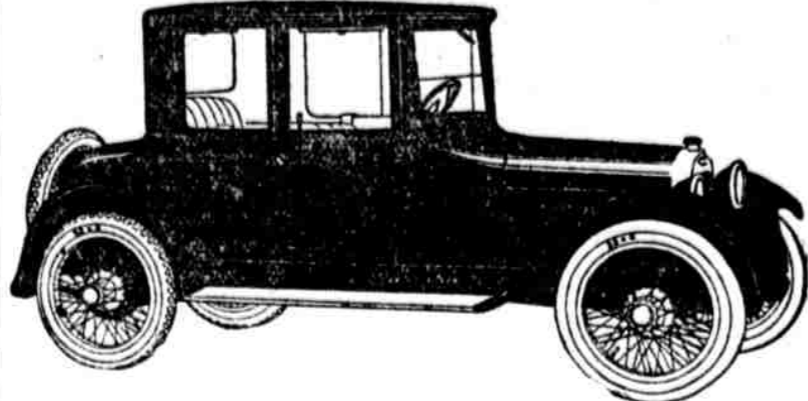
assisted by Dr. George W. Orton, who conducts the international field days at Franklin Field. Earl Eby, crack University of Pennsylvania runner, promised to act as agent at Antwerp for the Legion in signing up American winners for the field day program.

Commander H. G. Harris, of Naval Post No. 107, with its membership exceeding 400 legionaries, has announced that the post will resume its semi-monthly meetings at the Benedict Service Club, Fifteenth and Race streets, September 13. The new state constitution will be discussed at that meeting.

Harry J. Ireland Post No. 218 has received from Thomas W. Cunningham, clerk of the Court of Quarter Sessions,

Oakland

OAKLAND OWNERS REPORT RETURNS OF FROM 18 TO 25 MILES PER GALLON OF GASOLINE AND FROM 8,500 TO 12,000 MILES ON TIRES



SWUNG over a longer wheelbase and mounted on a much deeper frame, the new Oakland Sensible Six Coupe is, unusually staunch, roomy and comfortable.

Powered with the famous Oakland 44-horsepower, overhead-valve engine, the car is exceptionally capable under every driving condition—in traffic, on hills, in heavy going, on the open road.

Needless weight has been eliminated wherever weight is not a factor in strength, comfort and safety.

This scientific light-weight construction, combined with an engine unwasteful of its power, makes the Oakland Sensible Six Coupe conspicuous as a saver of gasoline, oil and tires.

The refinements that have been incorporated in this handsome closed car make it a most efficient agent of transportation in every way.

We invite your inspection of the Oakland Sensible Six Coupe at our salesrooms. Or, if you will phone or write, we will schedule a demonstration at your convenience.

OAKLAND SENSIBLE SIX

OPEN CAR \$1195, ROADSTER \$1395, FOUR DOOR SEDAN \$2065, COUPE \$2065. F. O. B. PONTIAC, MICH. ADDITIONAL FOR WIRE WHEEL EQUIPMENT, \$85

OAKLAND MOTOR CAR COMPANY
918 N. Broad Street Telephone Poplar 407
WEST PHILADELPHIA SALES CORP.
58th & Walnut Streets Telephone Belmont 9469

a stand of colors. Maurice Thomas, commander, is arranging for a meeting a week from Monday night at the post headquarters, 1616 Arch street, for a formal acceptance of the colors. The county representative in this post is David E. McGuckin, and one of its most active workers is Robert J. Frel.

Audubon Firemen Open Carnival

Audubon, N. J., Sept. 1.—The Audubon fire company opened a carnival in Merchant street last night to continue a week, in charge of William Bennett, chief of the fire department, assisted by a score of women headed by Mrs. Augustus Klausfelder. Hundreds patronized the affair.

You... needn't spend another dollar advertising

COLONIAL ICE-CREAM

HUNDREDS of our good friends have been kind enough to say Colonial Ice Cream is already so well liked and so popular we ought to stop our advertising. That is mighty flattering. But, we must politely disagree with them.

There are still a lot of skeptics around—especially among the dealers—and we want to convince them as we have thousands of men, women and children, and almost 1800 dealers—that Colonial Ice Cream is far and away the best ice cream Philadelphia has ever produced—that

"Better Ice Cream Can't Be Made"

Some dealers, skeptics, of course, have even gone so far as to say: "Sure, Colonial Ice Cream is the best in town. We know it. But we don't think you can keep up its high quality, even though you do charge more for it."

Tommy-rot! For years Philadelphia enjoyed a certain grade of ice cream. It was good, too. Better than ice cream made in other cities. But none of the Philadelphia manufacturers gave any thought to improving their product. They were content to rest on past performances.

THEN we came along. We erected the finest ice cream plant in the world. A revelation in completeness. Manufacturers from all over the country have called on us, and after inspecting our plant have summed up their impressions something like this: "You certainly have gone the limit in plant and equipment. Greatest layout for making ice cream we ever saw. Nothing like it in the country. You ought to be putting out an exceptional quality cream to harmonize with this beautiful building."

We do! Realizing that this plant represents an investment of more than \$1,500,000, we'd be short-sighted, indeed, to be content with imitating others.

From the very beginning we agreed that there was only one way to meet the stern competition of manufacturers who have been in business for years. That was not by cutting prices, but by putting out a better grade of ice cream.

That's exactly what we did, are doing and will continue to do.

The result—daily sales, about 50,000 quarts. A steady demand which has prompted us to increase our daily production of 100,000 quarts; thousands of men, women and children eating Colonial Ice Cream and enthusiastically recommending it to everybody; 1800 dealers doing a bigger, better and more profitable ice cream business; getting a more satisfactory service; winning and holding the good will of their customers.

- HAS our policy been successful? **YES**
- DOES it pay to stick to quality? **YES**
- HAS our advertising produced results? **YES**
- ARE we going to stop advertising? **NO**

Why?

Because we must drive home to the public and all dealers that Colonial Ice Cream is the finest, smoothest, richest and most delicious ice cream made.

That it is wholesome, healthful and pure.

That it is nourishing, refreshing, cooling.

That it is a tonic to the weary, the fatigued and the convalescent.

That it is exceptionally good for the children and should be served in every house at least once a day.



To Dealers:—

We will welcome you to our fold. We will install for you a new, sanitary, sturdily built and compact cabinet. We will render you a delivery and icing service that will enable you to rest easy at all times.

We assure you a substantial increase in your ice cream business from the day you announce to your customers and your neighborhood in general that you are serving Colonial Ice Cream.

Are you ready to join with us? Write or telephone. Our service man will call to see you.

COLONIAL ICE-CREAM Philadelphia's Best

COLONIAL ICE-CREAM COMPANY
FOURTH AND POPLAR STREETS

Telephones—Market 5400 or Park 1465

Joseph L. Trainor
President
Henry J. Trainor
Treasurer

A. E. Gruenewaldt
Vice President and General Manager
J. Miller
Secretary

Buick Authorized Exchange Dealer

1921 Models

The new 1921 Buick models will soon make their appearance. The extremely heavy demand for Buick cars leads us to suggest that you place your order promptly to insure as early a delivery as possible.

We are Authorized Exchange Dealers in Buick Automobiles and will take the car you now drive in exchange as part payment toward the purchase of a new Buick.

In short, our idea is to extend our facilities to those who have a used car to dispose of—relieve them of the burden of the entire transaction—and deliver a new Buick automobile.

"We Guarantee every Used Buick we sell"

THE EDWARD WILKIE MOTORS COMPANY
917 North Broad Street
North of Poplar Street

Bell Phone—Poplar 518-514 Keystone—Park 507