

Store Hours: 9 to 5

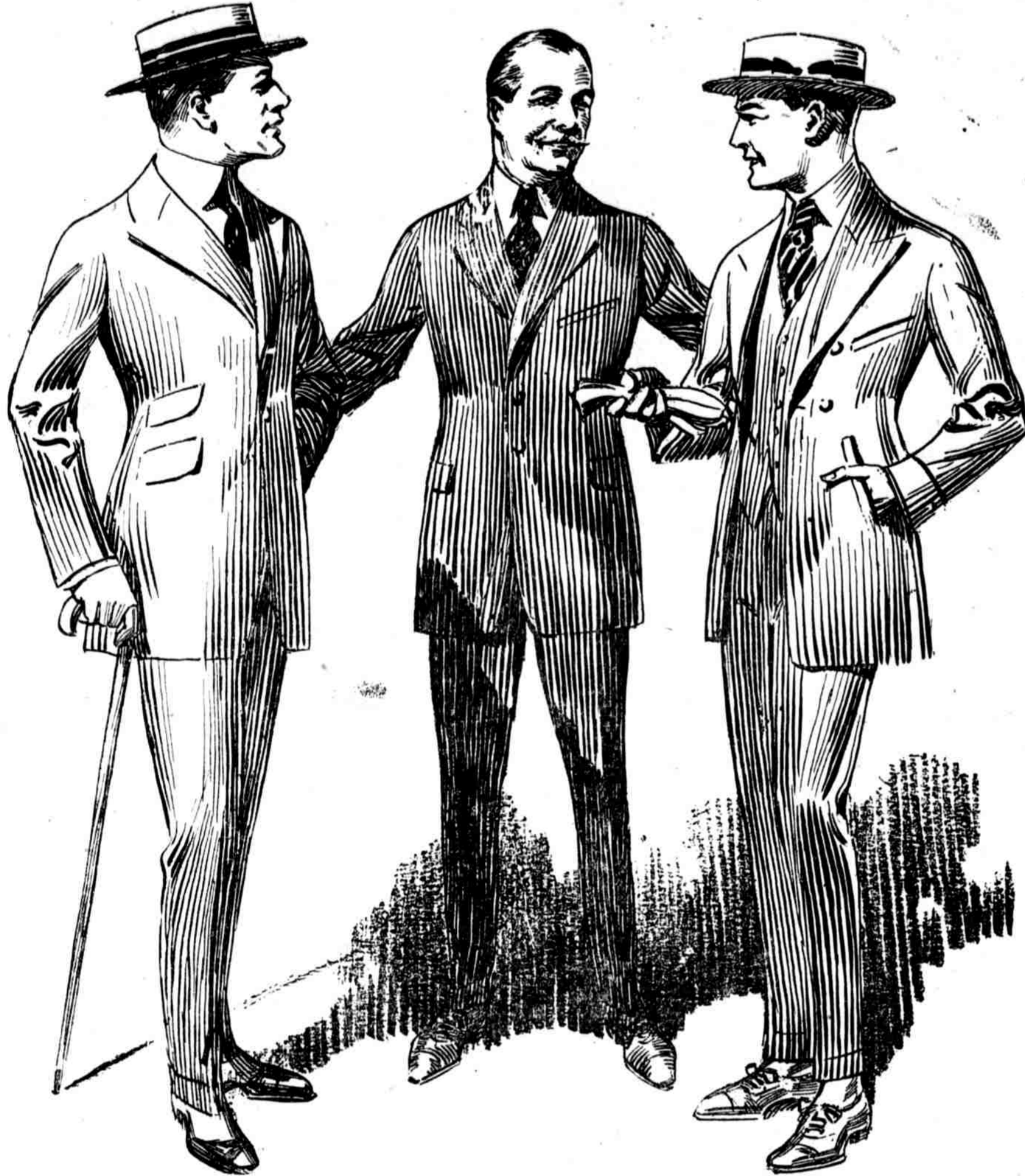
The new Straw Hat for wear the balance of the season, is among the Men's Sennit Straw Hats, reduced to \$1.75. Subway Store.

**GIMBEL BROTHERS**  
MARKET · CHESTNUT · EIGHTH · NINTH  
For Tomorrow—Wednesday

Tuesday, August 17, 1920

A newly low price on a lot of Men's Low Shoes—gun metal calf, tan calf, patent leather; been double the price—\$2.85. Subway Store.

**Subway Store Sale of 6000 Men's Suits at Average Half Price & Less** Banks Called Loans and Makers Sacrificed Stock



Clothing manufacturers quote prices for fall and winter suits that are still on a high plane—how, they say, can it be otherwise with wages and other costs of production just as high and going higher? That's "one side of the shield."

The other side is that other manufacturers are scaling down their reserve stocks on hand—with cash they can better meet future conditions as they arise.

And right there comes in the helpfulness of Gimbels—"could we distribute great lots of men's suits?" The result is you have—

**Unreserved Selection From Several Thousand Men's and Young Men's Suits at \$20**

**Average Half Price and Less**

Weights and Colorings for Now.  
Weights and Colorings for Fall.  
Weights and Colorings for All Year Wear.  
Sizes for Stouts, Longs, Shorts and Regulars—33-inch to 48-inch.  
Single-Breasted and Double-Breasted Models.

Because of the very low price there will be a slight charge for alterations.

Special—400 High-School Suits Double-Breasted—Single-Breasted And With Extra Pair of Long Trousers at

**\$20**

**Materials**  
Cassimeres  
Fancy Worsteds  
Velours  
Tweeds  
Cheviots  
Serges  
Flannels

**\$20**

**Colorings**  
Browns  
Blues  
Greens  
Grays  
Mingles

---Gimbels, Subway Store

**Tomorrow is Also Gimbel "Subway Store Day"—Great Money-Saving Specials**

<p>6900 Yards of <b>Fancy Flowered Washable Cretonnes at 22c a yd. Save 8c a yard</b> Excellent for comfort covers, screens, draperies, etc. Beautiful colorings. At 22c a yard. 500 Oil Opaque Window Shades at \$1.10. Save 40c. —Gimbels, "Subway Store Day"</p>	<p><b>51-piece Dinner Sets—\$7.95 Almost Half Price</b> —On account of slight defects in the finish—but rest assured there's nothing to harm the wear. Each set consists of 6 dinner plates, 6 tea plates, 6 soup plates, 6 bread-and-butter plates, 1 open vegetable dish, 1 pickle tray, 6 cups and 6 saucers, 6 dessert saucers, 1 meat dish, 1 sugar bowl, 1 cream pitcher, 1 sauce boat, 1 covered vegetable dish. Complete at \$7.95. Excellent value.—Gimbels, "Subway Store Day"</p>	<p><b>Dainty Georgette Blouses Worth Half More at— \$3</b> Four charming models with short sleeves. In popular shade of flesh color. Plenty of all-white, too. Sizes 36 to 46 in each model. Save half at \$3. —Gimbels, "Subway Store Day"</p>	<p><b>Boys' Sturdy Wash Suits at Close to Half Price— \$2</b> Material alone is worth about \$2. Blue, tan, white stripes and combinations. Cute styles—middy, Norfolk and Oliver Twist. Sizes for boys of two and one-half to eight years. Boys' Panama Norfolk Suits—at \$7.50 you save \$5. Cool and serviceable. For boys of 7 to 16 years. —Gimbels, "Subway Store Day"</p>	
<p><b>Brass Bedsteads at \$20</b> Satin finish; 2-inch continuous post and 1-inch fillers. Four-foot size only, at \$20. All-felt Mattresses, 45 lbs.; roll edge and covered in fancy ticking, at \$16.50. —Gimbels, "Subway Store Day"</p>	<p>600 Sample <b>Envelope Chemises \$1.55</b> <b>Specially Priced</b> Made of pink and white batiste, prettily trimmed with lace and embroidery. At \$1.55. Pink Crepe Nightgowns, \$1.35. —Gimbels, "Subway Store Day"</p>	<p><b>Women's and Misses' Summer Dresses, Reduced to \$2 and \$5</b> Because new fall dresses need the space. Ginghams, Lineens, plain and flowered voile s. Women's sizes: 3 to 44. Misses' sizes: 14 to 20. —Gimbels, "Subway Store Day"</p>	<p><b>Cotton Wash Goods at 48c a yard</b> 48c a yd. Lot includes— 38-inch Plain-color Voile and Organdy. 38-inch Fancy Novelty Voile. 38-inch Beach Suttling. 38-inch Batiste. —Gimbels, "Subway Store Day"</p>	<p><b>Men's Shirts, \$1.75</b> Values Up to Double Clean-up of small lots and "seconds"—shop-soiled, a misweave or possibly a stain. Of madras—printed and woven, cotton ponce, rep, percale, etc. Stripes, plain colors and white, in sizes 13½ to 17. At \$1.75. —Gimbels, "Subway Store Day"</p>
<p>5000 Yards of <b>Heavy Cotton Crash Toweling 22½c a yd.</b> For hand, dish and roller use; lengths of two yards to six yards. Special for Subway Store Day at 22½c a yard. 1200 Hemmed Union Crash Dish Towels, each..... } 30c Made from the famous "Startex" Crash; cut one-yard long and hemmed ready for use. —Gimbels, "Subway Store Day"</p>	<p>Two Groups of <b>Sheets at \$1.39 and \$1.78</b> <b>Today's Market Price</b> No. 1 { 5000 Bleached Seamless Sheets. Size 81x90 inches. These are slight seconds, but excellent grade of sheeting. Priced at today's wholesale cost. No. 2 { A limited quantity of Bleached Seamed Center Sheets at wholesale } \$1.39 cost. Double-bed size, at— —Gimbels, "Subway Store Day"</p>	<p>3000 Pairs of <b>Summer Shoes at \$1</b> Men's : Women's : Children's A general clean-up of odd lots and discontinued lines from our regular stock. Women's Oxfords and Pumps, in white canvas, patent leather and kid. All sizes in the lot at..... } \$1 Misses' and Children's } \$1 Men's White Canvas Shoes at— } \$1 high and low shoes in white canvas, at..... —Gimbels, "Subway Store Day"</p>	<p><b>Wool-Face Tapestry Brussels Rugs, 9x12 feet, at \$18</b> These rugs are pieced—cross-seamed, which accounts for this extremely low price. Oriental patterns and a good assortment, too. At \$18. Would be worth \$12 more if perfect. Seamless Velvet Rugs, close woven and in Oriental patterns, 9x12 feet; special at \$37.50. Fine quality Wool-and-Fiber Rugs—9x12 ft., at \$16.75. Worth a third more. —Gimbels, "Subway Store Day"</p>	