

Note the Name
EDWIN J. SCHOETTLE CO.
 PAPER BOXES & MAILING TUBES
 535 NORTH 11th STREET
 PHILA.

Buy Le Wilson Dodd's
Book of Susan
 No new novel equals its CHARM.
 Ask any bookseller. \$2.00.

Your Bath Is Ready
 and will be a health-helping delight if you use Llewellyn's Pure Bath Soap (12c a cake) a Llewellyn Mandralga soap (from \$2.50 up) and cool off afterward with Flowers of Italy Cologne (40c and 75c a bottle). Mail orders promptly filled.
LLEWELLYN'S
 Philadelphia's Standard Drug Store
 1518 Chestnut Street

PARCELS POST
"SWEET AIR"
 The Modern Method of Painless Extraction of TEETH
 "SAFE AS SLEEP"
 One to 20 teeth extracted without pain or danger. Just the thing for nervous people—no ill effects follow its use. Come. **DR. MOSES**
 S. E. Cor. 7th & Market Sts.
 Formerly on staff of prominent Hospital

O. D. Army Woolen Shirts, \$1.25
 These reclaimed shirts are made of City standard wool and are just like new. Just the thing for work, camping and any rough wear. Don't fail to take advantage of these opportunities.
W. F. KLINGER & CO.
 221 S. 52D STREET
 PHILADELPHIA, PA.
 Prepaid mail orders filled promptly. Parcel post 10c extra. Entrance on the side.

HERE IS YOUR CHANCE TO PURCHASE
U. S. Army Khaki Breeches at 90c a Pr.
 They are all like new and just the thing for any kind of outdoor work, riding, hunting, motorcycling, fishing. All sizes.
W. F. KLINGER & CO.
 221 S. 52D STREET
 PHILADELPHIA, PA.
 Prepaid mail orders filled promptly. Parcel post 10c extra. Entrance on the side.

Tampa Havana Brush End Smokers
 55 Simon, Sole Distributor
 Tampa, Fla.
 Brush End SMOKERS

Havana Smokers
 Made in Tampa, Fla.
 S. SIMON, P. O. Box 640, Tampa, Fla. will send prepaid catalogue in the United States on receipt of 25c or C. O. D. 50c. Genuine Brush End Smokers, or in the finest perfect or Florida Stage, made of the best Spanish cigars, with high-grade shade-grown tobacco in sanitary factory in Tampa, Fla.
 By selling by the box direct to you, our prices are about half, and a trial means a customer for us.
 State where you live, and whether you want medium or extra. This guarantee with every box. If after smoking five of these cigars, they are not entirely satisfactory, return them to S. Simon, P. O. Box 640, Tampa, Fla., and your money will be refunded.

27,829 Pairs U.S. Army Khaki Breeches 90c a Pair
 Reclaimed & Washed Worth \$3
 Genuine Regulation Breeches, purchased direct from U. S. Government. They are all in good condition. All sizes. Give waist measure.
U. S. ARMY Leggings & Puttees
ALL NEW
 Worth \$1.50
SPECIAL PRICE 40c
 O. D. or New—None Sent C. O. D.
Parcel Post Prepaid
 Write for Catalogue
Army & Navy Store
 225 MARKET ST.
 PHILADELPHIA, PA.

Store Hours: 9 to 5
 If a man is judged by the Hand Baggage he carries, the up-to-date styles shown here on the First floor are their own certificate of character and of the traveler's good judgment.
GIMBEL BROTHERS
 MARKET · CHESTNUT · EIGHTH · NINTH
 For Tomorrow—Tuesday

Serges and Tricotines—Satins—Taffetas—Georgettes—Tricolettes
Clean-Up Groupings of Women's and Misses' Dresses—Now



\$25 Women's Serges—good models to start Autumn in. Silk-pongees—with broad fillet-pattern laces. Taffetas. Beaded Georgettes. Here and there, a satin. Misses' Serges and pretty tricotines—good traveling and college models. Taffetas—very, very smart. And plenty of good satins.

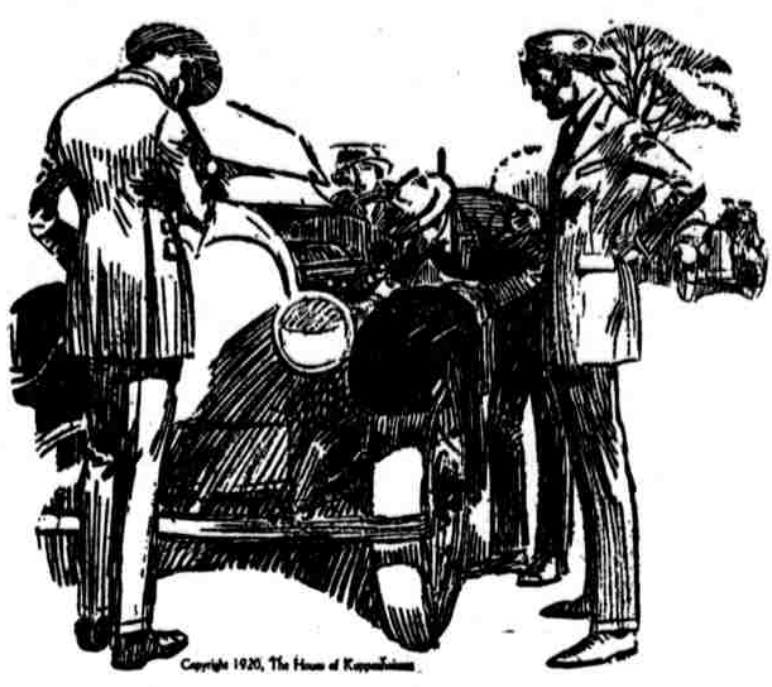
\$35 Women's Beaded Georgettes, Printed Georgettes, Crepes de Chine. Misses' Serges—more elaborately. Some embroidered. Tricotines—qualities worth hurrying a bit for! All sizes in each price-group: Misses': 14 to 20. Women's: 36 to 44.

\$39.75 Women's Tricolette in white or curious "sports" and "novelty" colorings. Misses' Tricolettes in brown or blue. Short sleeve models. Long sleeve models. Embroidered styles. —Gimbels, Salons of Dress, Third floor

Georgette Waists—Captured An Advance Fall Model—Special at \$5.95
 With the newest of the new Tuxedo collars—for it "jabots" delightfully. Long sleeves—the long sleeves Paris is heralding. Pink and white. Lace-trimmed. Navy Blue Crepe de Chine Waists—Special at \$3.95 Also a Fall model. Loop-button "holes." But just feel that quality! Also at \$3.95—Tricolettes in Six Different Colorings. Plenty of navy blue among them. And white. And black. But gay colors, too—orange, jade-green, coral. —Gimbels, Salons of Dress, Third floor \$5.95

Monday, August 9, 1920
 When the call of the Great Outdoors comes, the Sporting Goods Store has the answer. Baseball? Canoeing? Tennis? Fishing? Croquet? Golf?—whatever YOU prefer is on the Fourth floor.

Sale of 1700 Men's Kuppenheimer Suits at \$27.50
 Values Double and More



All the Models Kuppenheimer Makes
 All the Cloths and Colorings
 Kuppenheimer Uses

288 Suits at \$27.50. Save \$37.50
 464 Suits at \$27.50. Save \$32.50
 576 Suits at \$27.50. Save \$27.50
 372 Suits at \$27.50. Save \$22.50

For Men and Young Men
 About 400 Suits too light in weight and color for winter—just right for next three months. Balance dark color, medium weight—prime for any time.
 It's a story of railroad embargo "coming and going."
 The Woolens from the East were held up.
 The Suits—when finally made—were, in town, held up.
 Orders were canceled—Suits accumulated!
 Kuppenheimer sent us 1700 Suits to distribute.
 "Make your own price!" We made it—
\$27.50 for Suits Worth Double and More
 It's a new deal to get Suits from finest maker at such a little price!
 —Gimbels, Second floor, Ninth Street.

Bedspreads
 August Sale Prices Equaling Those of Four Years Ago

5000 Crochet Bedspreads at \$1.95, \$2.45, \$2.95
 Double-bed size.
Satin-Finished Bedspreads
 Pretty Marseilles patterns. Plain hem. At \$4.95, \$6.95 and \$8.65.
 With scalloped edges and cut-corners for metal beds and those old-fashioned Colonial "four-posters." At \$5.95, \$7.45 and \$8.50.
Satin-Finished Bed Sets
 Consisting of bedspread with scalloped edges and scalloped cut-corners, and scalloped bolster throw to match. At \$7.95, \$9.95 and \$12.50 a set. Save one-fourth on each.

Hand Block Printed Bed Sets at \$5.15 and \$6.15 a Set
 Floral patterns in pretty wraith effects, hand-printed on white. Yellow, rose and Copenhagen effects and edges scalloped in colors to match. Single bed size, at \$5.15. Double bed size, at \$6.15.
 —Gimbels, Second floor

The August Piano Sale
 Offers New Reduced and Used Pianos and Players
 On Easy Terms, With Privilege of Exchange

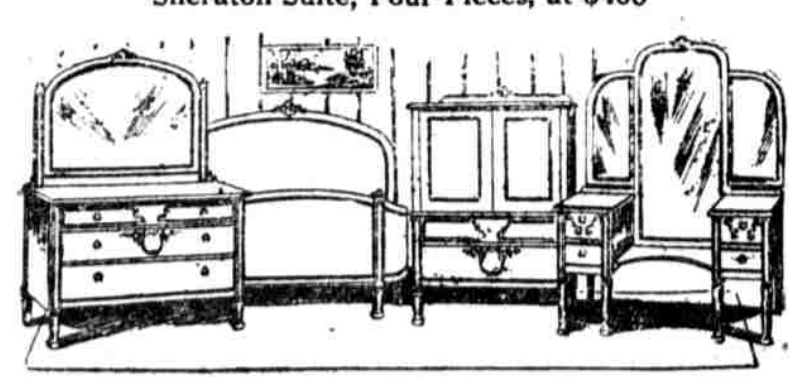
Every instrument is a desirable bargain, whether new, rebuilt or used. But if—later on—there is a wish for a better instrument, any of the specials bought in the Sale can be exchanged within six months and the price applied on the purchase of a new piano of the Gimbel line at regular prices.

Player-Pianos (Very Little Used)		New Player-Pianos (Reduced)		Upright Pianos (Used)	
Model	Price	Model	Price	Model	Price
Conreid Mahogany	\$455	Shoninger Mahogany	\$745	Dearborn Ebony	\$ 50
Conreid Mahogany	475	Bond Mahogany	795	Haines & Co. Mahogany	95
Conreid Mahogany	495	Shoninger Mahogany	795	Harrington Ebony	100
Conreid Mahogany	510	Harrington Mahogany	795	Martin Bros. Mahogany	110
Conreid Mahogany	525	Milton Electric	840	Howard Mahogany	125
Conreid Mahogany	535	Vose & Sons Mahogany	855	Hardman Ebony	135
Shoninger Mahogany	535	Vose & Sons Mahogany	895	Allen Mahogany	135
Harrington Mahogany	535	Harrington Autotone	895	Kelso Mahogany	145
Conreid Mahogany	545	Vose & Sons Mahogany	900	Weser Bros. Ebony	155
Harrington Mahogany	545	New Upright Pianos (Reduced)		Clinton Mahogany	165
Conreid Mahogany	555	Milton Mahogany	\$325	Walraven Mahogany	165
Harrington Mahogany	565	Milton Mahogany	410	—Gimbels, Hardman Hall, Seventh floor; Also Some on Thoroughfare, First floor, and Subway Store.	
Hardman Autotone Mahogany	625	Harrington Mahogany	425		

New Conreid Phonographs in the Sale
 Console Style Table Model, at **\$175** Upright Style Mahogany, at **\$79**
 Both on Easy Terms: First Payment May Be as Little as \$5
 —Gimbels, Hardman Hall, Seventh floor; some on First floor and in Subway Store.

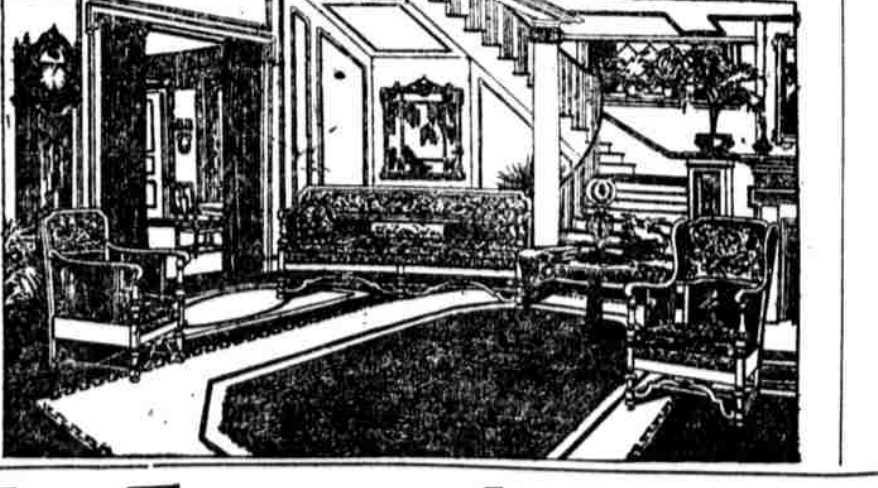
This August Furniture Sale Spells "Opportunity"
 to get the kind of Furniture you have set your heart on! To pay less for it than you hoped to pay. To pay for it on such easy terms that it need be no inconvenience.

A Group of Solid Mahogany-and-Cane Living-Room Furniture Unsurpassed in Finish and Construction
 They are made with absolutely solid mahogany frames—this means all back slats and back posts, doubled frame joints, corner blocks screwed and glued; seats are sanitary, automobile spring upholstery, coverings of damask, wool tapestry and silk velour. Suites are shown the "Gimbel Way," in the unfinished state, all details of construction exposed.



Sheraton Suite, Four Pieces, at \$400
 Suite, as illustrated, in mahogany and walnut, 45-in. bureau, 30 x 34-in. plate mirrors, large chifferobe, triplicate glass toilet table, full size bow-foot bedstead. Four pieces at \$400.

William and Mary Solid Mahogany Suite, Three-Pieces at \$375
 Saving of \$100
 Suite, as illustrated, all spring seats, loose spring cushions, complete with pillows and bolster, covering of tapestry and silk velour. Three pieces with rocker, at \$375.
 Three pieces with high back wing chair at \$400. Saving of \$100.



Dining-Room Suites in 10-Piece Suite at \$200

10-Piece William and Mary Dining-Room Suites at \$375. Saving of \$150
 Suite, as illustrated. American walnut, 60-inch buffet, 54-inch top extension table, large china closet, closed serving table and five side and one arm chair. Ten pieces at \$375. Saving of \$150.
 —Gimbels, Sixth floor

Subway Sale Extraordinary of Women's and Misses' Beautiful Silk Dresses—Mostly Georgettes

At \$15 Half-Price or Less
 Elaborately beaded Georgettes—skirt and bodice both beaded.
 Elaborately embroidered Georgettes—sometimes in contrasting color. Sometimes to match.
 Printed Georgettes—in fascinating all-over designs.
 Blue georgettes, printed with huge roses—and combined with navy blue taffeta.
And Besides—
 Stunning blue Taffetas. Crepes de Chines—beautifully draped—in brown or taupe or black.
 Foulards—in charming printings. Satins—draped or tuniced. Crepes Meteor—in new corded effects
Fifty-Six Styles Many Silk-Lined And Every Size
 Misses': 14, 16 and 18. Women's: 36 to 44.
 —Gimbels, Subway Store

Introductory Offer Free—1-Lb. Can Famous Wizard Wax With Each WIZARD Floor Polisher

The Wizard Floor Polisher is the NEW device for polishing floors, that takes all the hard work out of keeping them in perfect condition all the time.
 Not only is it low in price, economical in use, but is easier and simpler to use and actually produces far better results than any other waxing device.
Wizard Floor Polisher, regular price, \$3.50.
 1-lb. can Wizard Wax, regular price, 75c—free.
\$4.25 VALUE FOR \$3.50
 —Gimbels, Fourth floor