



DAUGHTER OF GEORGE M. COHAN. Miss Georgette Cohan, on the Aquitania, sailing for London, where her mother is now starring



PAINIS AS WELL AS SINGS. Enrico Caruso, the famous tenor, giving his boat a coat of white, near his summer home, Easthampton, Long Island



VISITING AT EDINBURGH. Princess Mary of England in the Scottish city during Girl Guides' celebration



LEADING FIGURES IN THE FOURTH ANNUAL CONFERENCE OF THE KUO MIN TANG ("People's Party"), being held at the Central Branch Y. M. C. A. Left to right, So Mun Wong, Milwaukee; Quong Yee Huie, Washington; Ma Soo, New York, chairman of convention; Moy Hong, Chicago, and Bunn L. Moy, Detroit



MISS ELIZABETH HAUCK, WITH WOODCHUCK. Miss Hauck was presented with a blue ribbon on this entry at the 27th annual horse show, Long Branch, N. J.



HE PLAYS TENNIS, TOO. Jock Soutar, rackets player, snapped at the Bethany courts, Fifty-fourth and Spruce streets



WEST POINTERS WORK AND PLAY AT CAMP DIX. Cadets J. B. Carrol (left) and D. C. Tredennick measuring a close game of quoits, played with horseshoes. Light artillery practice keeps the cadets busy much of the time.



Cadet Cyril Q. Marron (right), leading golfer of the detachment at Camp Dix for the summer training



ON BETHANY COURTS. F. H. Price, one of the speedboys of the West Philadelphia tennis club



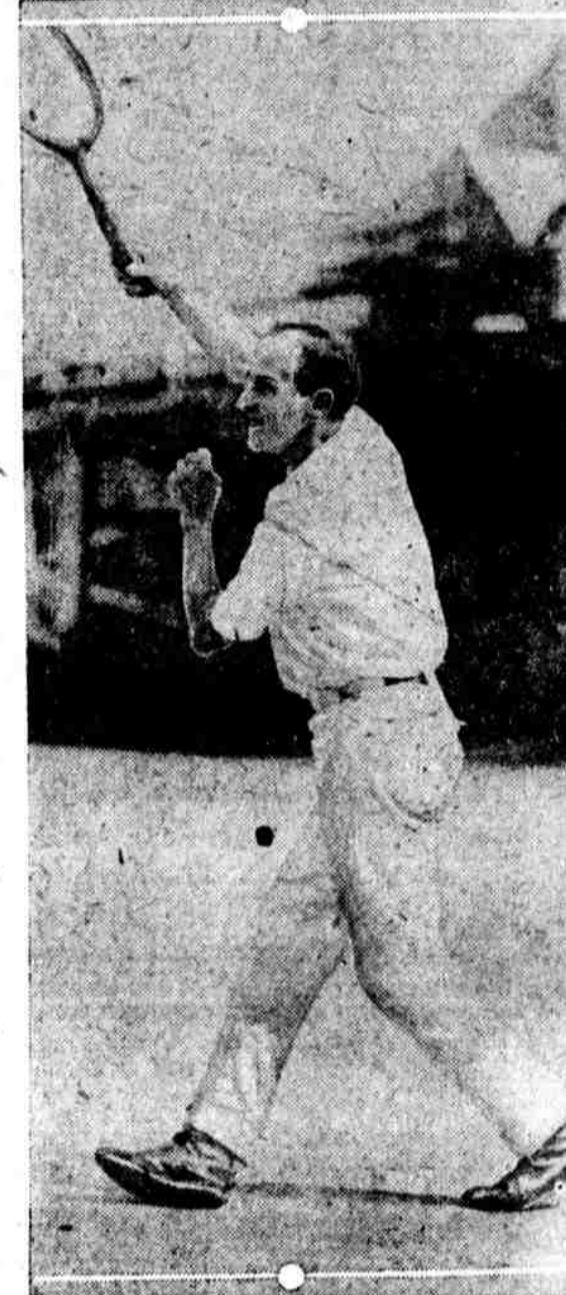
DRESS COSTS SIXTY CENTS and two hours' labor. Miss Doris Peterson, of the Department of Justice, Washington, is the creator



TWO CONTESTANTS IN THE AMBLER BABY SHOW. Sidney Clayton Buchanan rode in state, with his vehicle well decorated (left), but Grace Eleanor Ott had to get out and push her decorated perambulator

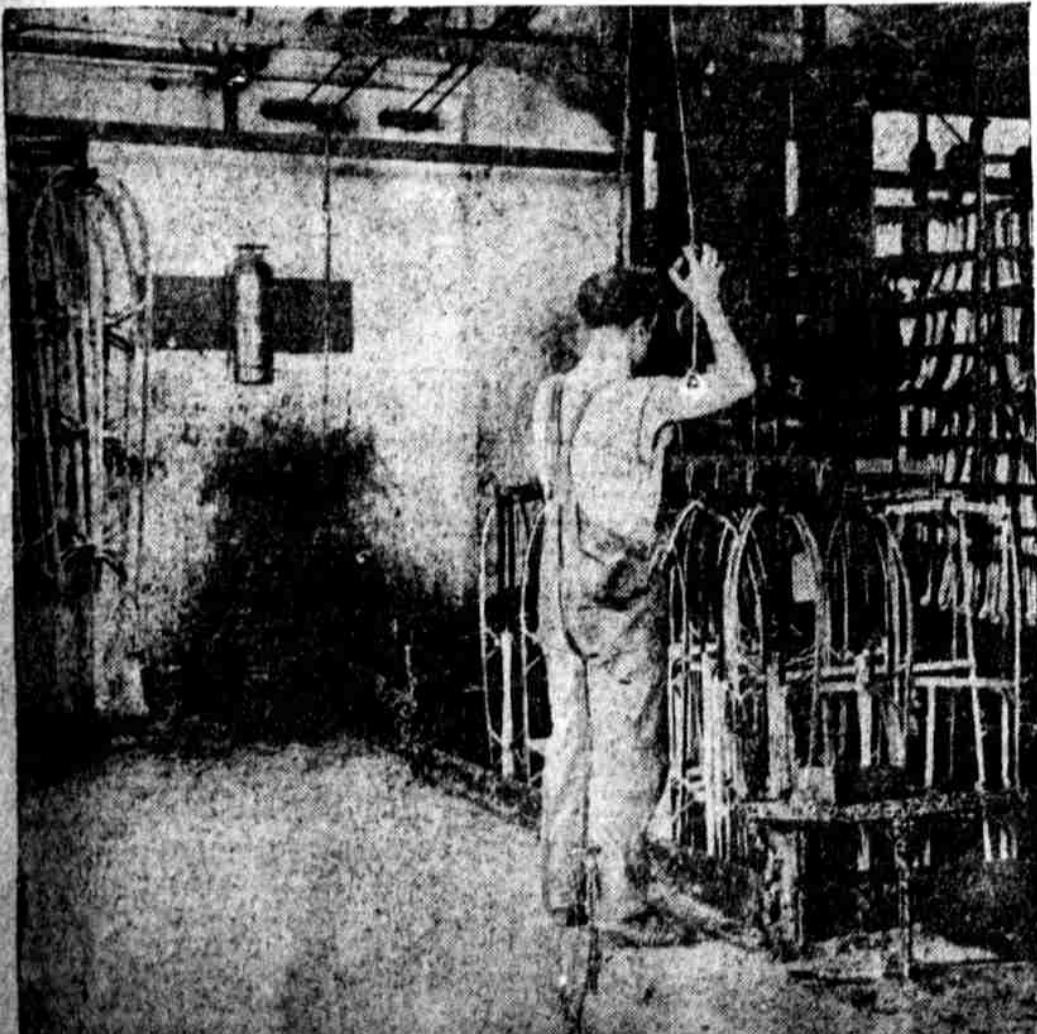


Sidney Clayton Buchanan rode in state, with his vehicle well decorated (left), but Grace Eleanor Ott had to get out and push her decorated perambulator



ON BETHANY COURTS. F. H. Price, one of the speedboys of the West Philadelphia tennis club

OUR CITY'S WORKERS AND WHAT THEY DO



EASY WAY TO DO VARNISHING. Henry C. Brown, Gloucester City, N. J., dipping brush into varnish at the rate of 2500 a day, at the S. L. Allen Company plant, Fifth street and Glenwood avenue. They are then placed on the racks for drying



CURTIS COUNTRY CLUB ATHLETES. Harry McGrath, coach, who has been a big factor in the 1920 season. He was formerly a member of the Mercury A. C., Charlotte Craig, Lillian Myers and Barbara Palmer (left to right) have registered many points for the club



Charlotte Craig, Lillian Myers and Barbara Palmer (left to right) have registered many points for the club



M. EICHOFF, Austrian plenipotentiary at the signing of peace terms with the Aines

THE BEAUTY CORNER



MISS EDNA CHATHAM, 2110 S. Fifteenth St., Phila. Photographs for this feature should be submitted through the mail, addressed to the Beauty Corner, EVENING PUBLIC LEDGER