

**NEW YORK LIGHT SUPPLY COMPANY**  
18 N. 9TH STREET  
The largest lighting fixture store in Philadelphia.  
**SPECIAL DISCOUNT 25% ON ALL LIGHTING FIXTURES**

**PUBLIC SPEAKING**  
A short course in self-confidence, self-development and public speaking. Monday and Tuesday evenings beginning June 28, 8:30 p.m. Open House. Free to Public. At the Club of the City, 2018 Spruce St. For descriptive literature, write to Neff College, 1730 Chestnut St.

**CHALMERS SEDAN**  
Newly revised. 30-hp. 4-cyl. Like new. Year to pay balance. Liberty Bonds accepted.  
Lexington Motor Co. of Penna., Lexington Bldg., 851-85 N. Broad St. Open Evenings

Store Hours 9 to 5

Automobile tires, 9000-mile guarantee; 11,000 miles on cord type. At very decided savings.

**GIMBEL BROTHERS**  
MARKET · CHESTNUT · EIGHTH · NINTH  
FOR SATURDAY

Philadelphia, Friday, June 25, 1920

Going vacationing? Canoes, shelter tents; all implements of sport—best at Gimbel's.

**Shrewd Shoppers Are Learning Stores and Profiting by This \$10,000,000 Adjustment Sale**

Compare. It is your purse that suffers if an unnecessary price is paid for goods. We tell you that goods are rather cheaper—very much cheaper in this Gimbel Sale.

And the shoppers who check up the offerings of the city become the staunchest friends of the Gimbel Store.

**Look at Silks—5000 Yards of Silks—Remnants**  
—that means part pieces, but useful lengths, not scraps—and they are to be sold Saturday at—

**\$1.68 a Yard**

being average half the Gimbel prices, which have been lowest all season. All seasonable silks are included.

**Tomorrow! Women's and Misses' DRESSES at Half Price**

Five groups—and every group is of "plums." But be early for the biggest plums!

- \$10.75—Means Half-Price**
- \$15 —Means Half-Price**
- \$29.75—Means Half-Price**
- \$39.75—Means Half-Price**
- \$45 —Means Half-Price**

In the Sale—Ginghams, Organdies, Voiles, Linens, Apparently endless styles!

Georgettes, Foulards, Taffetas, Tricolettes.



**Girls' Pretty Little Hotel Dresses—of Chiffon at \$14.75**

Ruffles and ruffles. Sleeveless overblouse over this pretty little ruffled bodice. White or pink. At \$17.75—Tucked chiffon, with the sleeveless overblouse, too. At \$19.75—Georgettes, ruffled and fichued.

**Dainty Tub-Frocks—Special at \$7.75**

White and colors. Organdies and voiles. And here and there a smart tissue.

\$15

**New Long Surplice Collars of Organdie**

Crisp and sheer and snowy-white! Self-frilled—or net frilled—or lace frilled—or just daintily hemstitched. Mighty good values at \$1, \$1.50, \$2 and \$2.25.

Organdie Surplice Collars with Cuffs to match. At \$1.50, \$2.75 and \$3 a set.

**Imported Imitation Pearl Necklaces**

**Special: More Than a Fourth and Almost a Half Savings**  
Oriental filled pearl beads. Graduated lengths. Solid gold clasps. Small beads. 27-inch length. At \$7.50. Medium size beads. 32-inch length. At \$8.50. Large size beads. 24-inch length. At \$15.

Gimbel's, First floor.

Gimbel's, First floor.

**"Kuppenheimer" and "Society Brand" SUITS for MEN**

are reduced for a complete clearance. The very suits that have been \$55 to \$95 are

**\$39 \$49 \$59**

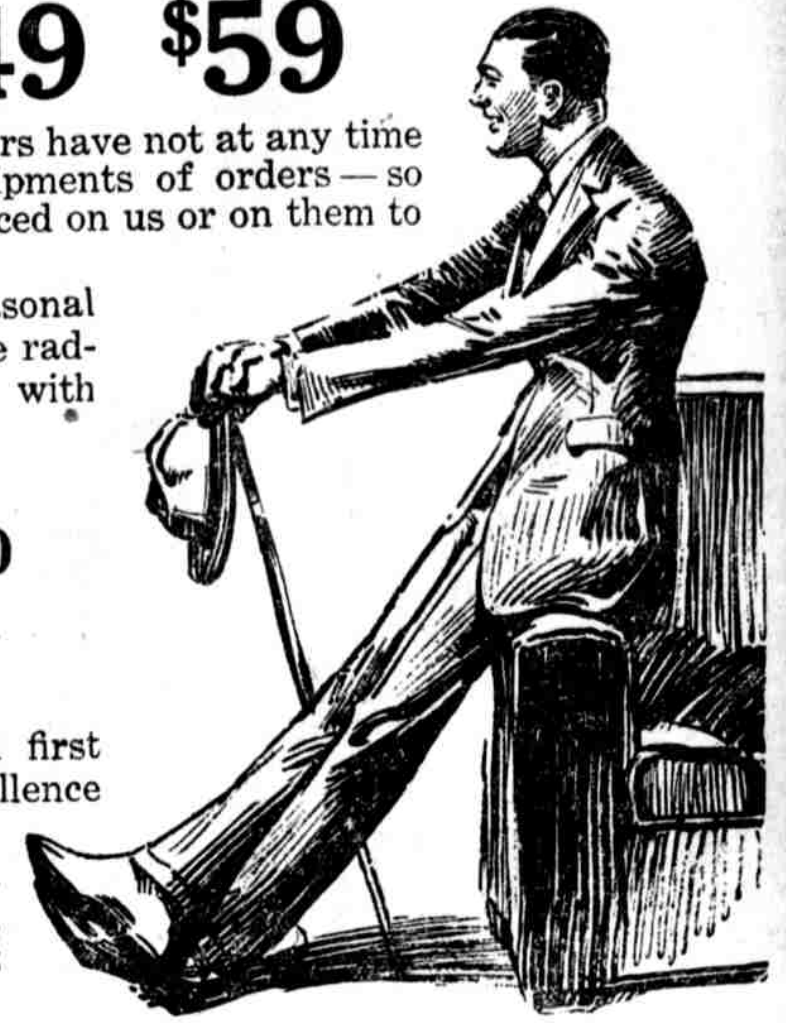
These famous makers have not at any time this year completed shipments of orders—so this clearance is not forced on us or on them to unload stocks.

It is simply a seasonal reduction—though more radical than ever, in line with the—

**Gimbel \$10,000,000 Adjustment Sale**

These makes stand first and foremost—for excellence of design and tailoring.

When we offer them at decided reductions, we offer bargains most worth while.



Copyright 1920, The House of Kuppenheimer

**Many Glacier Hotel**

**Glacier NATIONAL PARK**  
The Switzerland of America

In Glacier National Park an Alpine grandeur spreads out before you in marvelous panorama. Here on the "Top of the Continent" is the Switzerland of America. Snow-capped mountains and wondrous lakes.

Modern hotels and Swiss chalets afford genuine comfort. Tours via motor, saddle-horse and launch, by day, week or month. Or, why not walk through? "Glacier" is your only national park on the main line of a transcontinental railroad. En route to North Pacific Coast, Alaska or California, visit Lake Chelan, Mt. Rainier and Crater Lake National Parks.

Write for descriptive literature and Aeronauts map of Glacier National Park and Summer Tourist Pass. Or inquire of nearest ticket or tourist agent.

C. E. STONE, Passenger Traffic Manager  
St. Paul, Minn.

**E. D. FORDE, G. A.**  
612 Denckla Bldg.  
Philadelphia, Pa.

**See America First**  
**GREAT NORTHERN RAILWAY**  
Glacier National Park

**INTERNATIONAL MERCANTILE MARINE COMPANY AMERICAN LINE**

PHILADELPHIA—ANTWERP  
N. Y.—Cherbourg—Southampton  
St. Paul ..... July 28/Aug. 24/Aug. 21  
Philadelphia ..... July 10/Aug. 7/Sept. 4  
New York ..... July 17/Aug. 14/Sept. 11

**NEW YORK—HAMBURG**  
Manila ..... July 31/Aug. 14/Sept. 25  
Manchuria ..... July 21/Sept. 11/Oct. 23

**PHILADELPHIA—LIVERPOOL**  
West Celeron ..... July 1  
Haverford ..... July 10  
Auburn ..... July 24

**PHILADELPHIA—GLASGOW**  
Eastern Sea ..... July 1  
A Steamer ..... July 15

**PHILADELPHIA—HAMBURG**  
West Frank ..... July 1  
East Indian ..... July 3  
Santasket ..... July 17  
Edgemont ..... July 31

**RED STAR LINE**  
N. Y.—SOUTHAMPTON—ANTWERP  
Rotterdam ..... July 17/Aug. 14/Sept. 18  
Lapland ..... July 17/Aug. 21/Sept. 25  
Finland ..... July 24/Aug. 28/Oct. 2  
Zeland ..... July 31/Sept. 4/Oct. 9

Passenger Office, 1319 Walnut St., Phila.

**GREEN STARLINE**  
MONTHLY SERVICE  
Mediterranean, Adriatic, Greek and Black Sea Ports  
Trieste, Fiume, Patras and Piræus  
Sailing From Philadelphia  
U. S. Shipping Board Steel Steamers  
S/S "Zarebo" ..... June 30  
S/S "Jomar" ..... July 15

For rates and full particulars apply  
FURNES-WARREN LINE  
FURNES, WIRTH & CO., Ltd.  
Furness House, Whitehall St., N. E.  
or any TOURIST AGENCY

**BOSTON TO LIVERPOOL**  
New Modern British Steamers  
**S.S. Fort Victoria**  
WEDNESDAY, JUNE 23  
JULY 28, SEPT. 1, OCT. 6  
First Class Passengers Only

For rates and full particulars apply  
FURNES-WARREN LINE  
FURNES, WIRTH & CO., Ltd.  
Furness House, Whitehall St., N. E.  
or any TOURIST AGENCY

**BARBER STEAMSHIP LINES, Inc.**  
FAST SERVICE  
From Philadelphia  
Yokohama Kobe  
U. S. S. B. S. HENRY STEERS  
JUNE 30  
YOKOHAMA KOBÉ SHANGHAI  
U. S. S. B. S. EASTERN PLANET  
JULY 15  
For rates, etc., apply  
Barber Steamship Lines, Inc.  
17 Battery Place, New York  
GALLEY, DAVIS & CO., Philadelphia  
American Bureau Building

**Philadelphia to Scandinavian Ports**  
Christiania, Gothenburg, Copenhagen

**Regular Service**  
U. S. Shipping Board Steel Steamers  
S/S "FORT ARMSTRONG" Loading  
S/S "ORONOKE" ..... June 30 to July 13  
A Steamer ..... July 13  
(From Pier 78, South Wharves)  
The Charles T. Megee Co.  
Agents for U. S. Shipping Board  
Drexel Building  
PHILADELPHIA  
Bell—Lombard 5100

**EARN-LINE**  
Incorporated 1891  
U. S. Shipping Board Steel Steamers  
General Cargo

**Regular Service**  
Philadelphia—Manchester  
S/S "Des Moines Bridge" ..... June 30

Philadelphia—Havana  
S/S "Lake Galera" ..... July 2  
S/S "Coquina" ..... July 18

For rates and particulars apply to  
Earn-Line Steamship Co.  
139 South Fourth St.  
PHILADELPHIA, PA.

**Women's Silk-Poplin Bathing Suits—Special at \$6.90**

One of the cutest slip-on models ever designed—the shoulders unbutton to slip down the wet suit after the dip! All-black. Mighty graceful lines and two smartly placed pockets.

**Orleans Chocolates**

Including Chocolate-covered Nuts, Nougats, Caramels, Fruit-Flavored Creams, hard and "chewy!"

**75c lb.**

**Other Candy** (Chocolate-covered Assorted Fudge, lb.) **60c**  
**Specials** (Wrapped Chocolate Caramels, lb.) **35c**

**Imagine Imported Sports and Tailored Hats at \$6.50!**

Ready-to-Wear  
In such fascinating combinations as Milan combined with duvety; Java with fur felt; Milan hemp and faille silk. Brown, black, navy and Copenhagen blues and two-color effects.

**Women's and Misses' Lovely New Foulard Dresses Special at \$18.50**

With smart draperies and the cleverest side-ruffles that run into the prettiest pleups in back.

**Elaborately Beaded Georgette Dresses at \$19.75 and \$25**

Blues with crystal and steel and dark-blue or black beads. Browns, Black.

**Women's "Sample" Tub Skirts at \$1 and \$2.85—Worth Double and More**

**Girls' Organdie Dresses Special at \$5.95**

All-tucks and ruffles and sashes and short sleeves. Colors and white. Sizes 6 to 18.

**Women's Bathing Suits at \$2.90 to \$8.95**  
**Swimming Tights at \$1.25 to \$4.50**  
Sateens, mohair, surf-cloth, Jersey cloth and knit cloth.

**Men's Toyo Panamas Four Styles: Special at \$1.95**

Extraordinary values are these sennit straw hats, at \$2.65. Straw Hats of a finer grade at saving of a third—\$3.45.

**Men's Straw Hats \$2.65**

**Boys' Summer Suits**

**Palm Beach Panama Crash**  
**\$12.50 \$11.50 \$8.50**

Four shades each in the Palm Beach and Panama Cloth Suits; and the Crash Suits are linen, in black-and-white effects. All are in sizes for boys 7 to 17 years.

**Black Sateen Petticoats At \$1.15—A Saving of 85c**

And at \$1.85—the white sateens that everybody wears under certain kinds of summer dresses and skirts.

**Men's Pajamas at \$2.50**

Light Grounds Fancy Stripe Effects  
Correct weight for summer; well made; all sizes. Better than good value at \$2.50 a suit.

**Men's "Perfection" and "Welbred" Low Shoes Reduced at \$7.75**



Shoes of class and distinction—1200 pairs taken out of stock, including dark brown cordovan (horsehide) and calfskin; also black, \$7.75. Men's White Shoes reduced—Buckskin, \$7.90; Reinskin, \$5.90; Canvas, \$3.50; White Canvas Tennis Shoes, \$1.45.

**In the Subway Store Sale of 7000 Pairs of Shoes**

Customers remark that these are the best shoes values in town. Large selling space. And extra help at your service.

**2200 Pairs of Women's White Shoes at \$1.95**

High white canvas lace shoes of a well-known make, welted leather soles, military and French heels, also sports Oxfords of white canvas trimmed with brown leather; rubber soles and heels; plenty of all sizes. At \$1.95.

**3000 Pairs of Women's White Low Shoes at \$2.95**

**800 Pairs of Men's Shoes at \$3.95**  
Gunmetal kid and tan calf. All have Goodyear-sewed soles; broad, narrow and medium toe shapes. Sizes 6 to 11. At \$3.95.

**Children's White Shoes at \$1.50**  
1000 pairs white canvas Oxfords and high shoes of white canvas, rubber soles and heels. Cool, comfortable vacation shoes, easily cleaned and serviceable; sizes from child's 8 to misses' 2, at \$1.50.

**1275 Men's Mohair Suits \$13.50 and \$16.50**

Save About Half For Comfort  
What man wouldn't feel cool and comfortable in one of these Mohair Suits—and at the same time they are dressy enough for almost any occasion.

Dark colors with neat stripes. Sizes for all men, including stout.

**400 Men's and Young Men's Summer Suits at \$15—Save \$10**  
Taken from our regular stock and marked for a rapid clearance.

**Boys' Wash Suits Reduced \$1.35 to \$3.50**

Save Close to Half  
Many of these cool, play suits were taken from our third floor stock.

A nice variety of models and color schemes. All sizes for boys of 2½ to 10 years. At \$1.35 to \$3.50.  
**Boys' Norfolk Suits at \$10**  
Of Panama suitings and chevrons. Grays, greens and browns. Ages 7 to 17 years. At \$10.