

Galvanized Boat Pumps
 E. D. Burger Co., 58 N. 24 St.
 Main 1920, Market 422

N. Z. GRAVES
 Incorporated
 400 CHESTNUT STREET
 PHILADELPHIA
 The House of Specialties in Paints and Varnishes

FOOT AND LEG TROUBLES
 Instantly relieved by our special arch supports, fitted and adjusted by experts.
 Elastic Hostry, the most comfortable support for various ailments, such as limb, weak knees and ankles.
 Sprains, abdominal and athletic injuries.
 Largest Philadelphia Orthopedic Co., 49 N. 18th St.
 Cut out and keep for reference.—P. L.

JUNE
Q. R. S.
 PLAYER ROLLS
WEYMANN
 1108 Chestnut St.
 "Everything Musical Since 1864"

OUR PLATFORM Service
 LEWELLYN'S
 Philadelphia's Standard Dress Store
 1318 Chestnut Street

Stationery
 OFFICE stationery and supplies should be purchased with the same regard for their quality as is exercised in buying your raw materials. Many products offer you the utmost in efficiency, durability, quality!
 Complete Loose Leaf Ledger Outfits—leave, binders and indexes—blank books, memorandum books, columnar books (2 to 30 columns)—pens, pencils, ink, erasers—card index cabinets and filing devices.
 Immediate delivery on any of the above.
WILLIAM MANN COMPANY
 529 MARKET STREET
 PHILADELPHIA, PA.
 New York Offices: 261 Broadway. Founded in 1848

PHOTOPLAYS
 The following theatres obtain their pictures through the STANLEY Company of America, which is a guarantee of early showing of the finest productions. Ask for the theatre in your locality obtaining pictures through the Stanley Company of America.

- Alhambra** 12th, Morris & Passyunk Ave. Mat. Daily 2, 5, 8, 10, 11:15 P. M. "THE FALSE ROAD"
- ALLEGHENY** Frankford & Allegheny Ave. Mat. Daily 2, 5, 8, 10, 11:15 P. M. "THE WALKOFFS"
- APOLLO** 52d & Thompson Sts. Mat. Daily 2, 5, 8, 10, 11:15 P. M. "DR. JERKYL AND MR. HYDE"
- ARCADIA** Chestnut Below 16th St. Mat. Daily 2, 5, 8, 10, 11:15 P. M. "MRS. HOBBS"
- BALTIMORE** 51st & Baltimore Ave. Mat. Daily 2, 5, 8, 10, 11:15 P. M. "THE WOMAN AND THE PUPPET"
- BLUEBIRD** Broad Street and Spring Garden Ave. Mat. Daily 2, 5, 8, 10, 11:15 P. M. "THE FORBIDDEN WOMAN"
- BROADWAY** Broad & Snyder Ave. Mat. Daily 2, 5, 8, 10, 11:15 P. M. "THE WOMAN GIVES"
- CAPITOL** 72d Market Street Mat. Daily 2, 5, 8, 10, 11:15 P. M. "THE BUTTERFLY MAN"
- COLONIAL** 6th & Maplewood Ave. Mat. Daily 2, 5, 8, 10, 11:15 P. M. "THE PALISER CARE"
- EMPRESS** Main St. Mat. Daily 2, 5, 8, 10, 11:15 P. M. "THE TOLL GATE"
- FAIRMOUNT** 26th & Girard Ave. Mat. Daily 2, 5, 8, 10, 11:15 P. M. "THE DANISH EGG"
- FAMILY THEATRE** 1211 Market St. Mat. Daily 2, 5, 8, 10, 11:15 P. M. "THE SILVER HORDE"
- 56TH ST.** Theatre—Below Spruce Mat. Daily 2, 5, 8, 10, 11:15 P. M. "WHY CHANGE YOUR WIFE?"
- FRANKFORD** 4715 Frankford Mat. Daily 2, 5, 8, 10, 11:15 P. M. "THE HEART OF A CHILD"
- GREAT NORTHERN** Broad St. at Erie Mat. Daily 2, 5, 8, 10, 11:15 P. M. "THE HEART OF A CHILD"
- IMPERIAL** 60th & Walnut Sts. Mat. Daily 2, 5, 8, 10, 11:15 P. M. "THE SILVER HORDE"
- IRIS** Kensington and Allegheny Avenues Mat. Daily 2, 5, 8, 10, 11:15 P. M. "NOTORIOUS MRS. SANDS"
- LAFAYETTE** Kensington Ave. Mat. Daily 2, 5, 8, 10, 11:15 P. M. "HUSBANDS AND WIVES"
- LEADER** 41st & Lancaster Ave. Mat. Daily 2, 5, 8, 10, 11:15 P. M. "WHY CHANGE YOUR WIFE?"
- LIBERTY** Broad & Columbia Ave. Mat. Daily 2, 5, 8, 10, 11:15 P. M. "THE RIVER'S END"
- 333 MARKET STREET THEATRE** Mat. Daily 2, 5, 8, 10, 11:15 P. M. "THE WOMAN GIVES"

MOUNTING on Muslin and Cardboard of Maps, Posters and Plans.
NATIONAL BLUE PRINT CO.
 38 S. 6th St., Phila.
 Market 1900 Main 569

Do They Know?
 Are the Insurance Men Safe Guides?
 LOOK up the insurance rates on different roofing materials used on wooden sheathing boards, and you will find that the National Fire Protection Association gives tin the lowest rate of all.
 But you may ask: Do these men know their business? Well, when you remember that their business is to tell all the fire insurance companies how to get the most profit with the least risk to their millions, it seems fair to conclude that they are also safe guides for you.
 For roofing there is nothing like tin—but you want the best tin. Ask any roofer to name the best brands. If he mentions NU-DURA-TIN, you're safe.



Store Hours: 9 to 5
 Gimbel's so decidedly lead in value-giving as to be classifiable as a public utility.

GIMBEL BROTHERS
 MARKET CHESTNUT 11 EIGHTH NINTH
 FOR TUESDAY

Philadelphia, June 14, 1920
 \$100 from the marked price of any new piano or player piano—as a feature of this Adjustment Sale.

Ready for Tomorrow **New Half-Price Groups in Dress Sale** —Women's and Misses'



The Prices: \$15, \$25, \$35
The Savings: \$15 to \$40

In the \$15 Group— Linens in every color of this colorful Summer! And linens combined with voiles. And the loveliest white dot embroidered blue voiles with white organdie frillings. And handkerchief linens. And dot-embroidered organdies—plenty of white, but plenty, too, of pink, blue, sea-green, and cantaloupe yellow. And ginghams. And tissues. And crepe tissues. And 200 additional foulard-voiles.
In the \$25 Group— Cross-bar tissues. And wonderful linens in "designers' styles." And dainty shell-pink Georgettes—all saucy ruffles and unique lace triangles. And adoring figured Georgettes—Autumn's colorings; Autumn styles. And tafetas—taffetas at their prettiest! And beaded Georgettes. And embroidered Georgettes. And ruffled Georgettes. And rose-strewn Georgettes. And evening dresses, besides.
In the \$35 Group— Mostly printed Georgettes—the most beautiful printings of the season. And bead-embroidered satins. And wool-embroidered satins and embroidered tricolettes and tricotines. Very luxurious—very varied—gowns, indeed.
All Sizes—Both Women's and Misses'—Not in the Same Styles, But in Every Fabric of Each Price-Group
 —Gimbels, Salons of Dress, Third floor

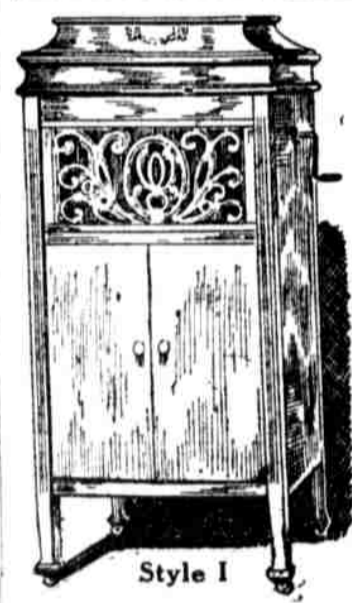
And in the Subway Store
Groups at \$4.75, \$6.75 and \$9.75
Savings \$5 to \$15.25
 Ginghams, Organdies. Plain voiles. Printed voiles. Braided, Embroidered, Printed, Flowered, Ruffled, Pleated, Tucked, Tafeta-trimmed. Satin-trimmed.
 Pink, blue, white, green, orchid, yellow. Blue-and-white. Black-and-white. Rose-and-white.
 —Gimbels, Subway Store

Philadelphia is Back to Peace Times in the Matter of MEN'S SUITS

\$27.50 and \$33.50

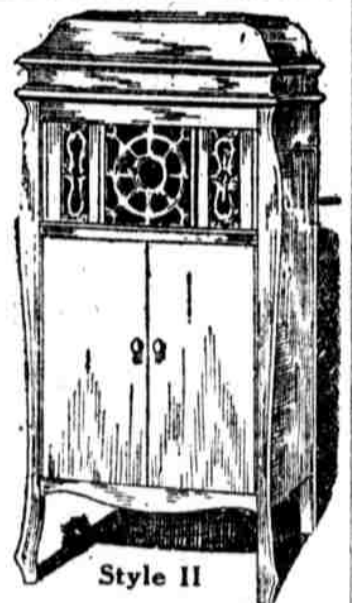
Close to half the prices they were made to bring. Selling started this morning—sale based on cancelled orders, because late in delivery.
EVERY SUIT IS ALL-WOOL. The Cheapest Fabric Used is Amos Abbott's Virgin Wool Cloth. Finest Tailoring. Silk-Sewed Seams. Linen Canvas and Genuine Haircloth Used. All Linings and Vest Backs of Silk or Super-Quality Mohair. Hand-Tailored Clothes for Particular Men and Young Men.

Goods Worsted and Worsted Cheviots, Cassimeres, Tweeds and Cheviots.
Colors Blues and Browns, Grays and Greens, in Plain Colors, Herringbones, Neat Checks and Plaids.
Patterns Plain and Herringbone Diagonal Checks, Plaids, Homespun and Mingled Effects.
Models Conservative and Double-breasted in Fashionable but High-Class Lines for Fine Dressers.
 Mere sleeve or trousers shortening free—but more extensive alterations will be charged for. Few will require it, as there is a very complete scale of sizes.
 We reserve the right to complete deliveries in two to four days—no usual organization could handle such a business more quickly.
 —Gimbels, Second floor



Sensational Sale of Handsome Phonographs At Half Price

A maker of high-grade talking machines wishing to quickly convert his stock into cash turns over to us the entire lot of two most expensive models to be sold at about cost of manufacture.
At \$89 Being Half the Regular Price **183 in Solid Walnut** **176 in Mahogany**
 These phonographs have one of the good standard motors; scientifically correct sound box and universal tone arm—so that any disc (flat) record can be played.
 Every home can have a really fine talking machine—so easy are the terms of payment.
 Special selling space for these beautiful machines—Seventh floor Auditorium. Also sold in Subway Store. \$89.



\$100 Off the Regular Price of Any New Player Piano: Grand or Upright Piano

Special Concession for the \$10,000,000 Adjustment Sale
 All instruments here are marked always in plain figures—prices from which we at no time permit a penny variation—but as a feature of this very comprehensive sale we make this fine concession, as it is an exception.
For a Limited Period

New Upright Pianos Regularly	New Player Pianos Regularly	Representatives of—	Owners of—
\$425	\$550	Hardman Pianos and Autotones	Conreid Pianos and Player Pianos
\$445	\$875	Vose Pianos and Player Pianos	
\$485	\$695	Packard Pianos and Player Pianos	
\$575	\$750	Milton Pianos and Player Pianos	
\$825	\$950	Series of Payments confidentially arranged—in fact, to suit the purchaser.	
Grand Pianos beginning at \$895	\$795	—Gimbels, Hardman Hall, Seventh floor	
Welte Mignon Electric Grand Player Pianos beginning at \$2100.	\$1295	—Special Showing in Subway Store	

FILE IN AND MAIL TO
GIMBEL BROTHERS, PHILA., PA.
 I am interested in Talking Machines Pianos
 Without obligations to me, please send fuller particulars.
 Name _____
 Address _____
 E. L. _____