

THE STREETS OF LIFE

By HAZEL DEYO BATCHELOR
Copyright, 1920, by the Public Ledger Co.

The Truth About Bill Snyder

Anne Carter has from childhood been nearly as hereditarily as her mother's sweet yielding disposition, but her father, who was determined to crush out any indication of vanity in the girl's nature, has been so strong-willed. When it came to a matter of forcing her to marry the man she detested, and to part with her of the one true friend who had brought any beauty into the girl's life, Anne defied her father. I was once told that Anne had never been so happy as when she had decided that happiness with the man she loved was not for her.

much of hopelessness in the girl's voice, and she was so resigned. "Thank you for coming," Anne said, impulsively, and Lucy smiled again and was gone into the gathering dusk of the summer evening. Anne turned and went into the house to meet her father.

(Tomorrow, Anne has a moment of triumph)

LEAVE WILDWOOD SCHOOLS

Fourteen Teachers Send in Resignations
Wildwood, May 31.—Fourteen of the teachers in the Wildwood schools have resigned to take effect at the end of the school year. Some of the teachers are married, some are planning to be and some have positions in other localities to go to. Three of the seniors of this year's high school class will go to summer school and take the examination so as to try for the vacancies.

MISS GLASS BETROTHED

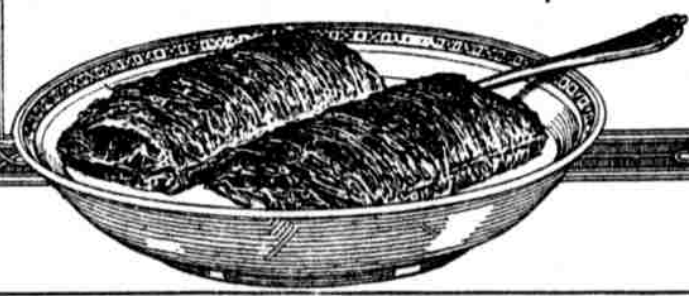
Announcement Made of Engagement of Virginia Senator's Daughter
Washington, May 31.—Senator and Mrs. Carter Glass, of Virginia, announce the engagement of their younger daughter, Miss Augusta Christian Glass, to Robert McClanahan Allen, of Roanoke, Va. The wedding probably will take place in the early fall. Mr. Allen is an architect and served as a lieutenant in the French army during the war with Germany. Miss Glass is now visiting in Roanoke. She attended her sister, Miss Mary Archer Glass, now Mrs. John Guerrant Bontwright, at the time of her marriage last November. This took place in the Church of the Covenant. Senator Glass was at that time secretary of the treasury.

Speaks on Life Beyond

Although he expressed no doubt that "those who are gone and living in the beyond," the Rev. Floyd W. Tomkins, rector of Holy Trinity Episcopal Church, Nineteenth and Walnut streets, does not believe it possible to communicate with the spirits of the departed. Doctor Tomkins made this statement during his sermon, at the memorial services being conducted at his church under the auspices of the Veteran Corps of the First Regiment, N. G. P. He was for years chaplain of the regiment.

WHAT WE KNOW ABOUT FOOD

has come down through centuries of study and experiment. The most perfect foods for man are the whole wheat grain, green vegetables and fruits. **Shredded Wheat Biscuit** is 100 per cent whole wheat, nothing wasted or thrown away. Here is a perfect luncheon: **Two Shredded Wheat Biscuits with milk, a dish of sliced oranges—strengthening, satisfying and easily digested. Shredded Wheat is ready-cooked and ready-to-eat.**



WANAMAKER'S

DOWN STAIRS STORE

WANAMAKER'S

Wanamaker's Down Stairs Store

June brings bountiful supplies of fine, fresh merchandise, much of it specially priced—and, there is still a further deduction of 20 per cent to be made from the already low prices.

Women's Tricolette Frocks
In Seven Models
at \$17
—Less the 20 per cent deduction

They are in navy, reindeer and brown and are made with over-skirts or on long, chemise lines, either braided or plain. It's best to come early for these.

Taffeta Dresses Special at \$15 and \$16.50

As these are mostly samples choosing is very wide and interesting. The dresses are in navy, black and Belgian blue, principally, and are made with draped skirts, with silk embroidery and unusual pockets.

Crepe de Chine Dresses, \$27.50

These are in several models, often with long, pleated lines and broad tucks. Others have frills and pleatings of ecru organdie. In flesh, navy and brown.

Thousands of New Cotton Frocks Know That Summertime Is Here

At \$4.50 and \$6.25 there are figured voiles in a great array of pretty patterns and colorings.

At \$6, figured voiles and plaid or checked gingham dresses.

At \$7, black or navy blue voiles with pin dots of white and collars, cuffs and vestees of white organdie.

At \$8.50, crisp frocks of white organdie with dots of rose pink, brown or Copenhagen and little double frills of plain-color organdie in the same colors.

And so it goes, up to \$15, where there is wonderfully fine choosing among voiles in dark Georgette patterns; voiles in white, Copenhagen or pink with embroidered dots of white, and many lovely organdies and dotted Swisses.

Voile Dresses in Extra Sizes at \$7.50 and \$8.50
These are in light and dark colorings and have fresh vestees and collars of tucked white organdie. In lavender, Copenhagen, rose and navy they are in sizes 39 to 53.
(Market)

A Sample Lot of Summer's Cotton Blouses at \$4.50
—with 20 per cent to be deducted

Over-blouses or regular tuck-in blouses of sheer white voile, colored novelty voile or white and colored organdie, most of them quite dainty or trimmed with lace. The sleeves show great variety, being quite short, elbow length or long.

Not each size in every style, but there are hundreds to choose from.

White Voile Blouses at \$2.75

are in fresh, pretty lace-trimmed styles or quite simple ones.
(Market)

Lace-Trimmed Scarfs at 50c

These bits of white freshness for the home or to take down with you for the Summer bungalow are in four or five different patterns with fine centers, trimmed with lace. 17x50 inches.

Drawn-work scrim scarfs, 17x54 inches, are 65c each. 20 per cent deducted from these prices.
(Central)

Bloomers

White, black or pink sateen bloomers are \$1.50. They are made of lustrous sateen, cut generously wide over a good pattern.

White crepe bloomers are 85c. —Not forgetting the 20 per cent deduction.
(Central)

Women's Gay-Colored Border Handkerchiefs, 25c and 35c
—less 20 per cent

Sheer linen with dots, stripes, figures or borders of lavender, pink, green, tan or blue.
(Central)

The 20 Per Cent Deduction Brings Down the Price of Staples!

Hand-hemmed, all-linen dish towels are 40c, 45c, 50c, 55c and 60c. The deduction on half a dozen makes quite a difference!
(Central)

Practical Cotton Umbrellas For Men and Women \$2.50

—less 20 per cent
The covers are good ones of tape-edge American taffeta (cost) and they have plain or carved wood handles.
(Central)

Indian Blankets Are \$7.50
—less the 20 per cent deduction

In their deep reds, yellows, and browns they are very colorful. A great many people are taking them to summer cottages, using them for canoes, couch throws and such.
Jacquard-Pattern Blankets also in the colorful reds, browns and blues are \$5, \$6 and \$6.50.
(Central)

It's White Footwear for June's Pathway

20 per cent deducted from the prices at time of purchase

Women's white canvas Oxfords are \$6 and pumps are \$6.50 a pair. Oxfords and pumps of white leather, like buckskin, are made with medium heels, as so many women like them, \$9.90 a pair.

High, lace shoes of white canvas with medium heels are \$5.75 a pair.

For Little Toddlers
of white leather are in sizes 2 to 5, at \$1.60 a pair.

And for Larger Children
White canvas ankle-strap pumps are in sizes 8 1/2 to 2, at \$2.50 to \$3 a pair.

White leather lace shoes in sizes 8 1/2 to 10 1/2 are \$5.25, and sizes 11 to 2, \$5.90 a pair.
(Chestnut)

One of These \$36.50 All-Wool Suits Is a Sound Investment for Any Man

At \$36.50 you are getting dollar for dollar value and, when the deduction of 20 per cent is made, bringing the price to \$29.20, you are getting a splendid suit at a considerable saving.

These suits are of all-wool mixed chevrons in summer weight and summer patterns. The coats are cut on conservative, single-breasted lines and are half-lined and quarter-lined with mohair. Typical business suits of the better sort.

Fittings in all regular sizes.
(Gallery, Market)

Boys' Shoes Special at \$3.50

Tan leather Blucher shoes with sensibly wide toes are in sizes 10 to 13 1/2.

At \$5.90 a pair
Boys' shoes of tan or black leather are on English lasts. Sizes 1 to 6.

At \$6.90 a pair
Blucher shoes in sizes 1 to 6 are of tan and black leather with wide toes.

Oxford Ties for Men and Boys

Men's Oxfords of black or tan leather are in English or medium-toe style at \$7.90 a pair.

Big boys' Oxfords at \$6.75 are of tan leather on English lasts. Sizes 1 to 6.

Small boys' tan leather Oxfords are made with comfortably wide toes. Sizes 10 to 13 1/2, \$5.50.

Tennis Shoes and Oxfords

for men and boys are in sizes 11 to 9, \$2 to \$3.50 a pair.
(Gallery, Market)

Turkish Towels 50c
—Less 20 per cent

Tomorrow will be a good time to get the extra towels that are always needed in summer. It would be a good plan to send some down to the seashore bungalow, too. These measure 19x40 inches and have narrow blue borders.
(Central)

Silk Petticoats Special at \$7.50
—Less 20 per cent

Silk jersey tops have pretty accordion-pleated taffeta or mesh-like flounces with insets of contrasting colors. All silk jersey petticoats have deep flounces.

In plain black, navy, gray, taupe, green, purple, brown, etc.
(Central)

Crepe de Chine \$2.25 a Yard

It is 38 inches wide and in white, flesh, pink, navy blue and black. The deduction of 20 per cent amounts to quite a sum on a dress length.
(Central)

A New Group of Women's Full-Length Coats Special at \$30

Coats of this type have a hundred uses. They are of Bolivia, silvertone, goldtone and a few are of velour. All are lined throughout with figured silk and are excellent value at \$30—with the 20 per cent deduction the price is even lower.

Serge Capes
in navy blue and black are one of the most fashionable wraps of the season. Plenty of pretty ones, in a variety of models, are here at \$23.50 to \$50.
—Less 20 per cent, of course.
(Market)

Women's Tailored Suits For Summer Trips

Jersey suits are wonderful suits for all-around wear. Good ones in dark hatter mixtures will give a great amount of service and their price is but \$25.

The 20 per cent deduction is easily calculated.
(Market)

Sweater Yarn Of a Soft, Silky Quality 45c a Ball

—Less the 20 Per Cent Deduction

Black Copenhagen
White Turquoise
Tau Coral
Dark Green American Beauty
(Central)

June Days Are Outing Days in Baby Land

Almost every day, now, his small majesty's carriage is trundled out into the sunshine and balmy June air.

The 20 per cent deduction applies to the fresh prettiness for his carriage as well as to everything else in the Down Stairs Store.

Pillows
Filled with fluff, they are 75c; with down, \$1.75. Pillows are covered with pink or blue sateen.

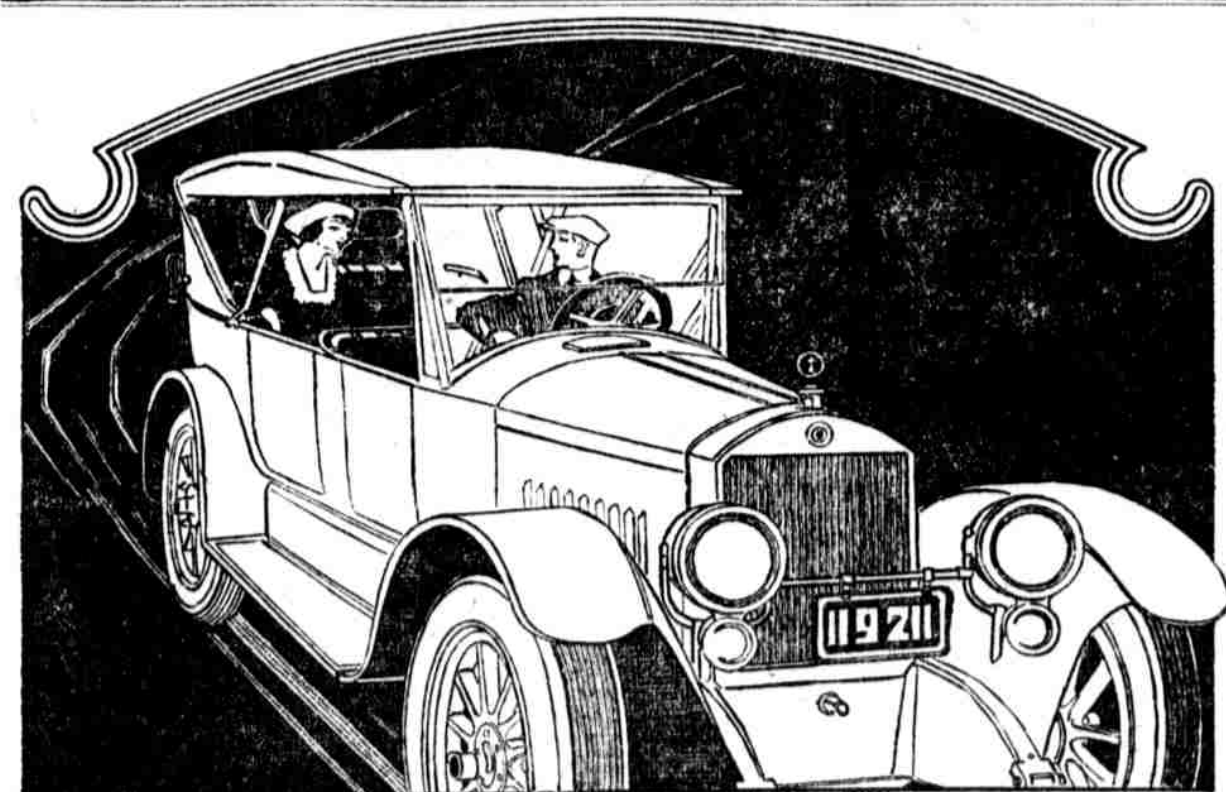
Pillow Covers
Mother and adoring friends have many to choose from: a ruffled nainsook cover at 50c; softest batiste at 75c; straight pillow cases of pique or muslin at 85c and of linen at \$1.50; to Madeira cases at \$2.25.

Carriage Covers
of snowy pique vary in price from \$1 to \$2.50; some are neatly hemstitched and others are embroidered.
(Central)

1000 House Frocks Special at \$3 and \$3.85

Really charming dresses and many styles are among them. There are light, pretty voiles in Billie Burke style; cool, clean-looking percale dresses trimmed with white; gingham in plain color, checks and plaids, some trimmed with white pique.

Many of the dresses are neat and pretty enough to wear about in the morning or for porch wear in the afternoon. 20 per cent deduction from these prices.
(Central)



STANDARD EIGHT
A Powerful Car

THE beautiful lines and luxury of your car please you, but you respect it for its power.
In time you come to love it for what it has done for you, and you depend upon it as you depend upon your friends.
To those men and women to whom a motor car is something more than a machine, we respectfully recommend the Standard Eight.
See the new models at our showrooms.

EASTERN MOTORS CORPORATION
655-7 N. Broad St. Philadelphia, Pa.
Telephone Poplar 6580



STANDARD MOTOR CAR CO. 7th & Market Sts., Camden, N. J.	HIGH & TROUT, Pottstown, Pa.
R. A. MILLER, 115 N. Railroad St., Pottsville, Pa.	G. V. ROEFMAN, 4th & 1/2 W. York, Pa.
C. C. SYDOR, 18 N. 6th St., Reading, Pa.	STANDARD MOTOR CAR CO., 18 South Montgomery St., Trenton, N. J.
KLEIN MOTOR CAR CO., 117 N. 11th St., Allentown, Pa.	BERKICK STORES CO., Berwick, Pa.
DEARNE & SHIPLEY, 34 S. 10th St., Chester, Pa.	UNION MOTOR CAR CO., 22 W. Wyoming Ave., Scranton, Pa.
W. L. SCHWARTZ, 5th St., Norristown, Pa.	STANDARD MOTOR CAR CO., 151 N. 4th St., York, Pa.
MORI BROTHERS, Vigilant, N. J.	STANDARD AUTOMOBILE CO., 24 & Chestnut Sts., Harrisburg, Pa.