

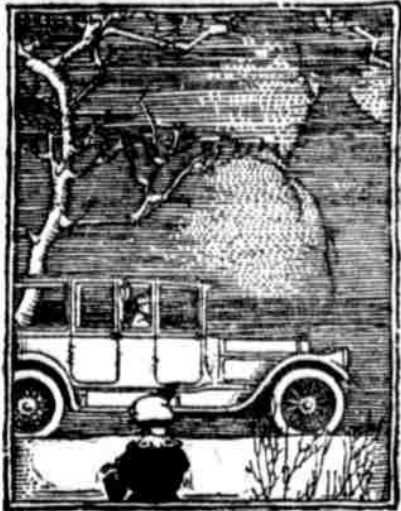
TO COPY OLD COSTUMES

American Passion Play Will Benefit by Famous Collection
 Mrs. W. Yaris Stevenson, of this city, has obtained the use of Miss Florence Ben Oler's collection of Palestine costumes to copy for the National Pilgrimage Play.
 The play will be offered in the hills of Hollywood, Calif., next month, under the direction of Mrs. Stevenson. It

will be an American interpretation of the Passion Play, and will be presented annually.
 The collection of Miss Ben Oler was gathered after years of searching, and is now the property of the Interchurch World Movement, which organization extended to Mrs. Stevenson the privilege of copying the costumes.
 The Palestine costumes were gathered together after research work in the Holy Land, and Mrs. Stevenson says the costumes to be copied from

they will give the necessary touch of conviction to the Passion Play.
PART-TIME ACCOUNTING
 A Professional Bookkeeper and expert accountant solicits temporary accounting work of any kind. Auditing, preparation of tax returns, financial statements, etc., or routine work. Part time, day or evening. C 226, LEDGER OFFICE

YOURS TO COMMAND



Just as the pianist knows that when he touches a certain key, a certain note is produced—

So, the driver of a Pierce-Arrow knows that a touch of the foot produces power, a touch of the hand shifts the gear or changes the course of the car.

Not an instant's hesitation—so eager to respond as almost seeming to anticipate the command—that's the feeling which the Pierce-Arrow creates between itself and its owner.

The power of Dual Valves, the co-operation of dual ignition, the improved transmission and steering system all contribute to the greater performing ability of a great car.

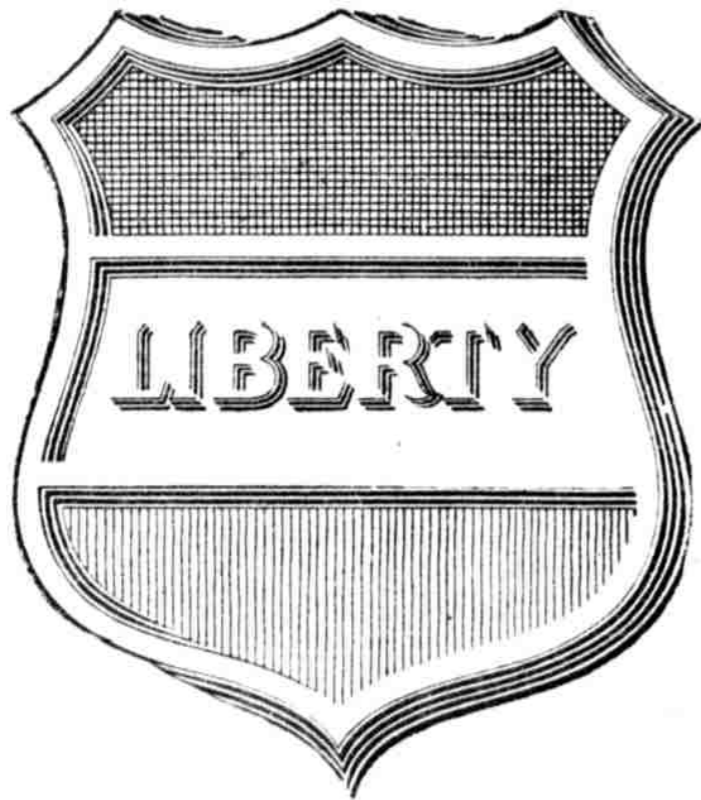
FOSS-HUGHES COMPANY

Twenty-first and Market Streets
 Philadelphia, Pa.

PROMPT DELIVERIES ON MOST BODY STYLES

PIERCE ARROW

DUAL VALVE SIX



LIBERTY SIX

The fine thing about the Liberty, as we see it, is that its merit is as marked as its beauty.

Evidence that this is so, appears in the delightful smoothness of Liberty performance, and the distinct difference in the way it rides and drives.

W. S. Kip Motor Company

1408-1410 North Broad Street

Phone Poplar 7506

Open Evenings

YOU Mr. Truck Owner

read this advertisement and you will realize how you can save several hundred dollars on the first cost of your truck, and many hundred more on its maintenance.
 The HUFFMAN 2-Ton is the lowest priced 2000 pounds capacity truck in America that contains proven units. Model C has a Buick Motor 24 x 24 and Torbenen Internal gear drive. Wheel base 140 inches. Loading space 10 1/2 from rear of driver's seat to end of frame. Model B is an same chassis has Continental Motor 24 x 24 and Standard worm drive.
 MODEL C SIXES MODEL B 20075 DEALERS—Write, wire or phone if you want the Agency of a Truck that sells.

IMMEDIATE DELIVERY
UNITED SALES COMPANY
 Distributors
 4830-32-34 Market St.
 Philadelphia, Pa.

The Blue Store
 The Store of Personal Service
 1310 Chestnut Street
For Memorial Day
 Smart Outing Modes for wear on the day of Cheers and of Welcome; colors that symbolize rejoicing and simple tones that reflect a nation's gratitude!
BLOUSES: At \$2.95, \$3.95 and \$5
 Tailored modes in Organdie, Voile and Dimity in two color and more smart effects; emphasizing a simplicity of enduring charm.
SKIRTS: At \$5, \$6.95 and \$10
 Washable Skirts of Gabardine and Surf Satin; a very smart array of styles and fabrics of sure fashion importance.
 In brief: Washable Fashions for the holiday that excel in Value-giving.

National SEXTET

BUILT IN FIVE CUSTOM BODY MODES

Lively on Sluggish Gas

Two years of exhaustive experiment preceded the perfection of the Dry Gas Manifold of the National Sextet engine. The correct application of heat to gasoline, embodying the enclosure of a correctly designed manifold within the cylinder head, makes the Sextet lively and responsive on the sluggish fuels now so common. Anyone can apply heat haphazardly to gasoline. But it required National engineering skill and test to determine just the right amount of heat to be applied at just the right place for highest engine efficiency.

It is now on display at our show-rooms. If more convenient, arrange for a demonstration by telephone.

Elbow from Carburetor
 Hot Spot
 Exhaust Manifold
 I—Intake port
 E—Exhaust ports

NATIONAL MOTOR CAR & VEHICLE CORPORATION
 Indianapolis
 Twentieth Successful Year

SAMUEL EARLEY MOTOR CO.
 675 North Broad Street
 Bell Phone: Poplar 1991

Templar

The Superfine Small Car

GRATIFY your desire for something more in a motor car than you have been accustomed to.

Templar is built better than most cars. Come in and see for yourself. One little ride will convince you.

COMPTON BUTLER, Inc.
 822 North Broad St. Philadelphia

MORROW MOTORS CORP.
 Wholesale Distributors
 822 North Broad St. Philadelphia

The Templar Motors Company
 Pioneer Builders of Quality Small Cars
 Cleveland

KEDS For Comfort This Summer

Boys' and Girls' \$1.25
 Men's and Women's Oxfords and Tennis Shoes \$1.75
 Bal-High, \$2.50
 More and on the link; Women in Keds find their housework easy; Children revel in their soft, silent, "barefoot" appeal.
 Garden Hose, 12c a foot
 Keds have light, high grade canvas uppers and spring rubber soles that add a new joy to walking.

Whether at work or play, with Keds on your feet you will be more comfortable this Summer.

Ladies' and Men's Raincoats All new models, big variety to select from; different shades. Value \$20, now \$12
 U. S. Government Hip Boots; large sizes. Value \$12, now \$4.80

820 Chestnut Street **Goodyear** RUBBER COMPANY 820 Chestnut Street

Reading

IMPROVED Express Train Service BETWEEN PHILADELPHIA and NEW YORK

Effective May 23, 1920. Leave Reading Terminal.

Weekdays: 6:00, 7:00, 8:00, 9:00, 11:00 A. M., 12:00 noon, 2:00, 4:00, 5:00, 9:15 P. M., 12:30 midnight.

Sundays: 8:00, 10:00 A. M., 12:00 noon, *3:00, *5:00, *8:00 P. M., 12:30 midnight.

Pullman cars on all trains except those marked (*). Dining-club cars at convenient hours. Sleeping cars on Midnight train, open from 10:00 P. M. to 7:00 A. M.
 *-Except Saturdays k-Saturdays Only
 Additional Trains Also Run from New York to Phila.

Philadelphia and Reading Railway Reading

"Turnover"

Swift & Company has referred frequently to its small profit on sales. This has raised the question, "how many times do you turn over your capital?"

Last year Swift & Company turned over its invested capital (capital stock plus surplus) nearly six times.

This, together with our large volume of business, made it possible to operate on a profit of only 1 1/2 cents on each turnover. Since there were about six turnovers, our total profit amounted to about 7 per cent on capital and surplus.

This profit amounted to 11 per cent on capital stock alone. We include surplus as part of our total investment, because that is tied up in plants and equipment and huge supplies of products in process of manufacture and on the way to market, just as is our capital stock.

If the turnover had been based on inventory instead of on capital, the figures would have been about the same, because the average value of our stock of goods on hand was about equal to our investment.

The profit, from all sources, averaged only 1/4 cent per pound on all products sold, and obviously had practically no effect on prices.

Our books are audited by certified public accountants, and are of course open to inspection by the U. S. Internal Revenue Department. We want people to know and to understand our business.

Swift & Company, U. S. A.
 Seven Wholesale Distributing Markets
 Central Office, 9th and Girard Ave.
 F. M. Hall, District Manager

THIS SHOWS WHAT BECOMES OF THE AVERAGE DOLLAR RECEIVED BY SWIFT & COMPANY FROM THE SALE OF MEAT AND BY PRODUCTS. LIVE ANIMALS 85.4 CENTS IS PAID FOR THE 13 CENTS FOR LABOR EXPENSES AND FREIGHT 1.6 CENTS REMAINS WITH SWIFT & COMPANY AS PROFIT

SWIFT & COMPANY'S PROFIT 18%