

SOVIET CAMPAIGN EXCITES ENGLAND

Bolshevik Invasion of Persia and Seizure of Enzeli Deemed Grave

POLES IN PANICKY RETREAT

By the Associated Press
London, May 20.—Invasion of Persia and the seizure of the port of Enzeli by the Bolsheviks, with the evacuation of that town by British troops, has created a stir here and the Near East position is extremely grave, it is declared in some quarters. Newspapers ask what the British Government is going to do in view of its agreement with Persia concluded last year.

In this connection Andrew Bonar Law, government leader, told the House of Commons today that the agreement does not place Great Britain under obligations with regard to the Bolshevik invasion.

The offensive began last Friday by the Bolsheviks against the Poles along a fifty-mile line on the northern front was continuing successfully up to yesterday, according to an official Moscow statement today. The Polish retreat was panicky at some points, the statement says.

"During the advance on Zlatky we took a large number of prisoners, who are being counted."
"In the direction of Borisov our troops, starting on advance, forced the river Beresina on a second twenty miles. The fighting is resulting in a continued enlargement of the ground held on the right bank of the river. Fierce fighting is continuing in the direction of Zhiobin and Mozir, in the railway region, and north of Bernal."

Honolulu, May 20.—(By A. P.)—The Japanese war office has announced that the first detachment of Japanese troops was landed a few miles south of Nikolaevsk on May 15, beginning their operations against the Bolsheviks, according to a Tokyo cable to the Nippon Jiji, a Japanese language newspaper, here.

Japan immediately will open negotiations with Russia for a buffer state in Siberia, it is also reported.

FIRE RAZES N. J. ROADHOUSE

Incendiarism Is Suspected in \$8000 Blaze at Folsom

Folsom, N. J., May 20.—The Hotel Schulz, a well-known roadhouse near the Reading Railway depot here, was reduced to ashes early this morning, with a loss estimated at \$8000. Samuel Belsky, the proprietor, escaped with his wife and baby son. There were no patrons in the place at the time.

Belsky suspects incendiarism because he was aroused about 3 o'clock by a loud noise as if someone kicking at the door. Rushing downstairs, he found the building in flames. The fact that there was no stove near where the blaze started, added to his suspicions.

FIGHTS INSURANCE CLAIM

Company Asserts Port Carbon Merchant Committed Suicide

Pottsville, May 20.—An insurance company in court today revealed the reasons for its refusal to pay \$10,000 on the life policy of Robert Smith, merchant, of Port Carbon. The company claims that Smith committed suicide and that his widow is not entitled to the money.

Mrs. Smith testified she had been talking with her husband. The next moment he passed into the bathroom, a shot was heard and she found him dead. Mrs. Smith says the shooting was accidental. That no powder marks were on her husband's head where the bullet entered was given as corroboration of her theory.

A. D. Knittle, counsel for Mrs. Smith, contends no suicide would hold a revolver in that position.

'HI' SEES BILL SIDETRACKED

McCumber Responds With Slam at Johnson's Campaign

Washington, May 20.—Charges of Senator Keyton, of Iowa, and Johnson, of California, that the Senate steering committee had sidetracked the meat packer regulation and other bills.

TAKING REPLY TODAY

Chairman McCumber, of North Dakota. He made the counter assertion that Johnson had discussed irrelevant subjects and that Johnson had spent six months away from the Senate in his presidential campaign.

STRIKE CLAUSE ABOLISHED

Railroad Station Agents Accept Provisions of Each-Cummins Law

Pittsburgh, May 20.—(By A. P.)—The "strike" clause in the bylaws of the Order of Railroad Station Agents has been eliminated and hereafter grievances of the organization will be taken up for settlement with the federal railroad labor board or government arbitrators, E. H. Morton, president of the order, announced here today.

The agent, meeting in biennial convention here, have voted to do away with the clause authorizing the calling of strikes to enforce demands of the workers, Mr. Morton said. He added that the strike weapon had become obsolete in the opinion of a majority of the agents, who believed that the Each-Cummins law, under which the railroad labor board was created, provided a better means of adjusting differences between employees and employers.

TAFT UNITARIAN CHAIRMAN

Former President to Be Honorary Leader of Church Crusade

Boston, May 20.—Former President William Howard Taft has accepted the honorary chairmanship of the Unitarian campaign committee, it was announced today at committee headquarters in this city.

The committee has organized to formulate plans for a great campaign to spread the message of Unitarianism, to raise a fund to accomplish that purpose and to unify Unitarians.

MURDER CHARGE DROPPED

Alibi of Youngstown Waiter Is De- clared Flawless

Hoboken, N. J., May 20.—(By A. P.)—Willie Schlagel, Youngstown waiter, brought here from Ohio in connection with the slaying of Frederick Rueckert, wealthy metal manufacturer, was discharged by Recorder Carsten today when he was arraigned on a charge of murder.

CREDIT CLOTHING

Clothes for the Fairer Family We Solicit Your Account

Hy-Grade Clothing Co.
827 CHESTNUT ST.
2d Floor. Open Evgs.

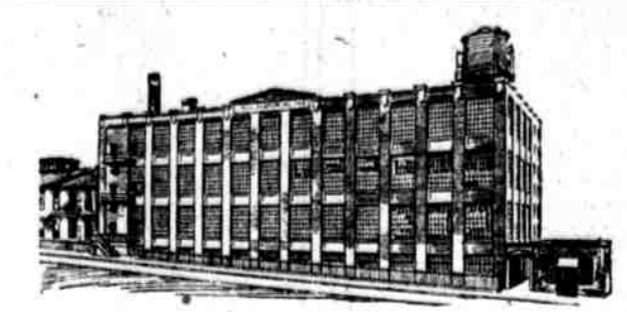
STULL'S 42 No. 11 ST.

50¢ DINNER or SUPPER 50¢ Inc. Soup, Meat, 2 Veg., B. B. & Coffee

40¢ PLATTERS 40¢ Inc. Soup, Meat, 2 Veg., B. B. & Coffee, 2 Vegetables

STILL IN THE GAME,
FOOD JUST THE SAME,
DON'T FORGET THE NAME!

STULL'S



Plant of Fred. Pearson & Co.

Designed and Equipped by

W. E. S. DYER

Mill Engineer

LAND TITLE BUILDING, PHILADELPHIA

Factories—Mills—Power Plants Special Processes and Devices

OVER 800 PLANTS IN 18 YEARS

BECKER AND COMPANY
Doing Our Bit

Black calf, white linen, patent colt. Black and brown.

**\$8 to \$12 Values
Until Saturday, 6 P. M.**

Then Back to Regular Prices

\$5.85

Tan kid; black kid; patent colt. New light shade tan and black.

31 S. 15th St., 2d Floor

Open for Your Convenience From 8 A. M. to 6:30 P. M.
Mail Orders Given Prompt Attention

Time-Saving Twins

DEPEND upon your alarm clock to call a halt in your slumbers. And upon your DUO LATHER BRUSH to bring you to the breakfast table and the down town car on time.

The DUO makes a quicker shave possible because it combines brush and cream. The cream is in the handle. A dip in water—a twist—and the best imported bristles of the brush are whipping up a lather for a luxurious shave—and a speedy one.

The DeLuxe Brush Company
2517 N. 2nd St., Philadelphia

Look for the DUO in the maroon and gold box, \$5.50 with lather of cream. Refills 20¢ each at your dealers or by mail.

Hanscom's Grand Banquet

is the world's finest
COFFEE
served in all the
Hanscom Restaurants
or 48c lb.

at our Grocery Depts.
Commonwealth Blend
a Delicious Coffee, 41c lb.

Let Hanscom do all your baking in these days of high-priced flour and sugar.
We Make a Specialty of Wedding and Birthday Cakes
You may be sure of lowest prices and absolute satisfaction at
HANSCOM'S
1232 Market Street and Branches

CITIZENS BANK

22 & 24 SOUTH 3RD ST.

One Rule for
Success, Happiness,
Independence

—Spend less than you earn. It's a little harder than it sounds, but once you start to put away a certain sum in a savings bank every week, it's surprising how easy it is to save \$100, then \$500. We've every facility for you. Start today.

We Pay 3.85%
Interest
from day you deposit
and permit you to
draw four checks a
month.

OPEN DAY & NIGHT
9 AM TO 10 PM

KARDEX

Cards in Sight

The Final Word in Record Keeping

MODERN business demands more than complete records of activities and transactions. It has come to recognize that records must be readily accessible and absolutely accurate if they are to be of value in planning and deciding—if they are to be the basis for control in business. And so, over 40,000 business concerns, representing over 300 different lines of business have accepted Kardex as the final word in record keeping.

can locate the card you want at a glance. A flip of a finger brings the entire card in full view. Entry on or reference to either front or back of the card is made without removing it. That feature eliminates the possibility of misfiled and lost cards.

Kardex makes records instantly accessible. It puts the important data on each and every record card in plain sight. It eliminates the same wasting, "hunt and search" card-in-box method that requires the handling of many cards to find the one you want.

The experiences of the thousands of Kardex users has served to show that Kardex saves from 50% to 75% of time in the maintenance of records, that it makes records from 200% to 300% more efficient, that it enforces accuracy, that it encourages the use of recorded facts and figures in planning and deciding.

In justice to yourself and your business, write for complete information about Kardex—or better still, telephone for a demonstration. There's no obligation.



American Kardex Company

26 S. Fifteenth St., Phila., Pa.

Telephone Locust 4591

Bryn Mawr College has given to Philadelphia

9% of the women teachers in her high schools.

54 teachers in her public schools.

500 college-trained women.

What will Philadelphia give to Bryn Mawr?

Bryn Mawr asks Philadelphia for \$500,000 for professors' salaries.

Will Philadelphia help?

Contributions may be sent to Asa S. Wing,
Treasurer of Bryn Mawr College, Provident
Life & Trust Co., Fourth and Chestnut Sts.



The Bryn Mawr Endowment

1300 Spruce Street, Philadelphia

This advertisement was paid for by an alumna of Bryn Mawr College.